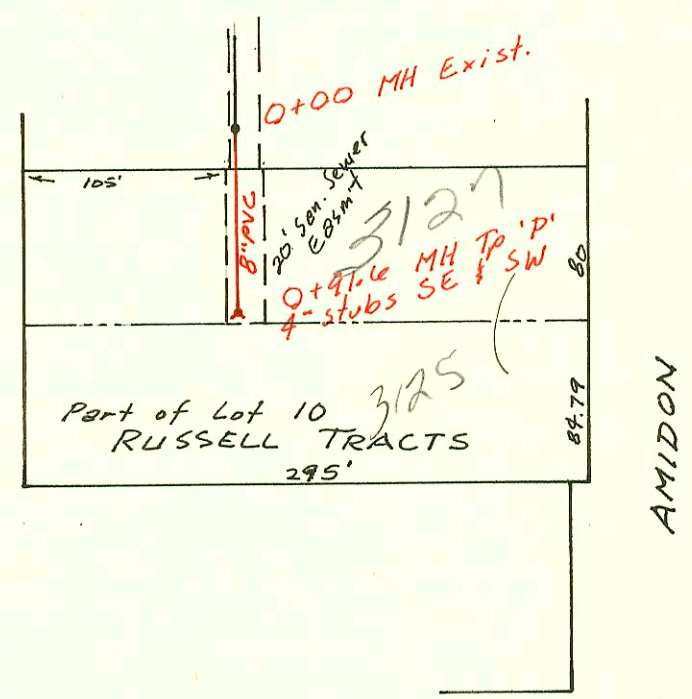
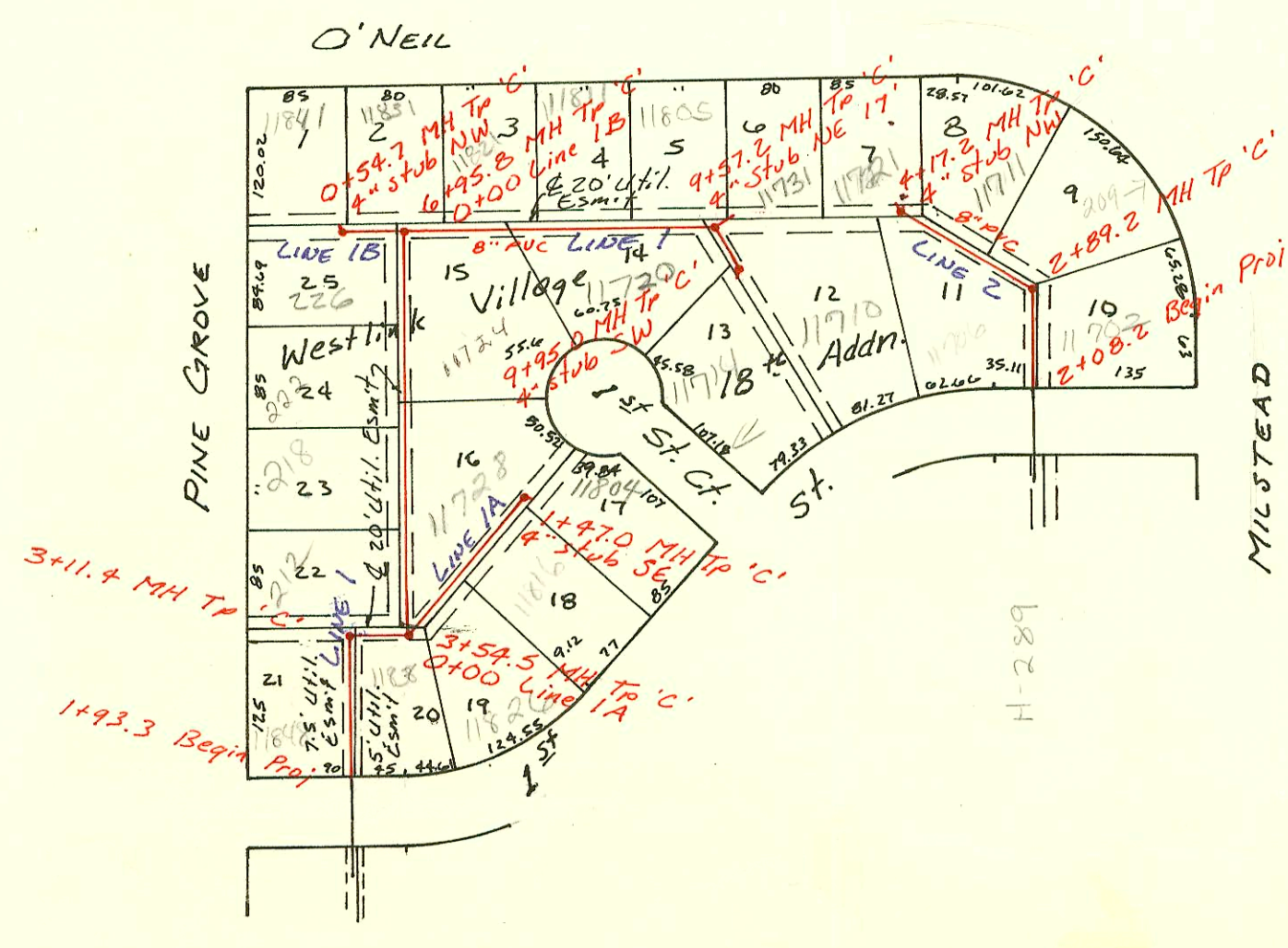
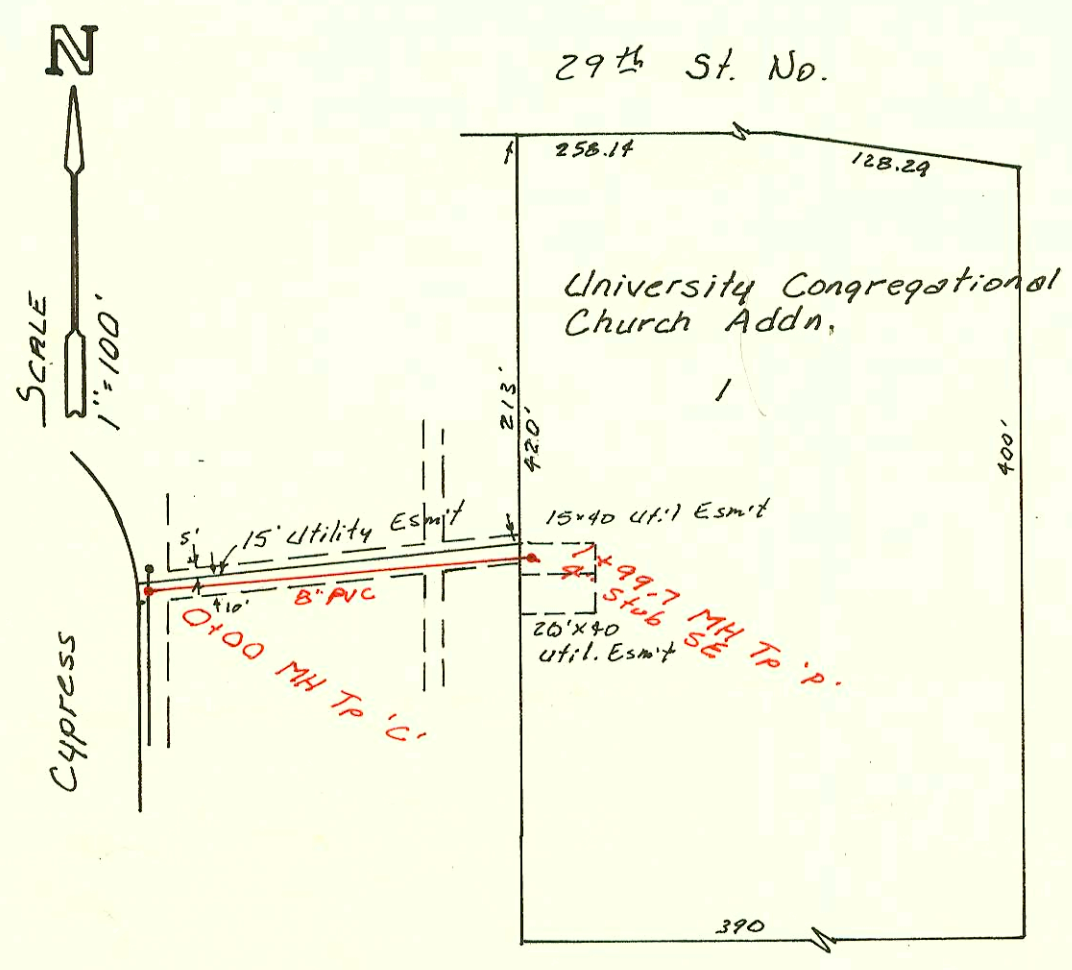


LAT 72, MAIN 17, San. Sewer #22  
 468-76-245-81626-000-000-001  
 Built By Starr Construction  
 Booked 4-14-87 from BR-72

Priv. San. Sewer Ext. to Serve  
 Lot 1, Carpenters Local Union #201 Addn.  
 468-76-245-80001-000-000-101  
 Built By Utility Contr.  
 Booked 2-20-87 from CG-16A



LAT 91, WAR INDUSTRIES SEWER  
 468-76-245-81586-000-000-001  
 Built By Wildcat Const.  
 Booked 4-20-87 from M4-5



LAT 11, MAIN 9, SW INTERCEPTOR  
 468-76-245-81633-000-000-001  
 Built By Mid-States Const.  
 Booked 5-4-87 From CG-18

CONSTRUCTION RECORD							SERVICE RECORD					
STATION	ELEVATION		Depth	MANHOLE	4-INCH "Y" BRANCHES		No. of Permit		House Number		DATE OF PERMITS	
	Ground	Grade			North West	South East	North West	South East	North West	South East	North West	South East
SAN. SEWER EXT. BOEING SEWER												
	100.57	79.55 OUT 89.99 IN	21.0 10.6	124+50.4								
125+00	110.9	91.05	19.9									
126+00	115.0	93.19	21.8									
	118.36	97.01 OUT 106.69 IN	24.4 11.7	126+38.1								
127+00	118.9	107.16	11.7									
128+00	120.5	107.92	12.6									
129+00	120.0	108.68	11.3									
	119.93	109.43 OUT 109.77 IN	10.5	129+98.6								
130+00												
131+00	123.3	110.62	12.7									
132+00	125.4	111.45	14.0									
133+00	124.4	112.29	12.1									
	120.16	112.78 OUT 112.84 IN	7.4	133+58.8								
Priv. S.S. for lot 1, Carpenters Local Union #201 Addn.												
0+00	91.8	85.60	6.2	0+00 EXIST								
	91.3	85.90	5.4	0+75.0	4" stub SW		17809		1235 Gruy		2-12-87	
LAT 72, MAIN 17, S.S. #22												
0+00	129.31	120.93	8.4	0+00 EXIST								
	128.55	121.05	7.5	0+91.6	4" stub SW 4" stub SE		19042		3127 N Amdon		9-10-87	
							923537		325 N Amdon		3-13-92	
LAT 91 WIS												
0+00	221.45	209.57	11.9	0+00								
1+00	220.2	210.20	10.0									
	220.42	210.82	9.6	1+99.7	4" stub SE							
LAT 11 MAIN 9, SW I												
1+93.3	154.9	145.23	9.7									
2+00	155.0	145.29	9.7									
					2+60.4 TAP		16389		1184 W 1st St		5-21-87	
3+00	156.0	146.12	9.9									
	157.18	146.22 OUT 146.29 IN	11.0	3+11.4	3+15.0 TAP	3+34.2 TAP	25232	18635	218 N Pine Grove	11836 W 1st St	4-25-90	7-1-87
	157.09	146.80 OUT 146.59 IN	10.7	3+54.5								
4+00	156.0	146.78	9.2									
					4+98.5 TAP	4+89.8 TAP	21136	19900	218 Pine Grove	11728 W 1st	7-22-88	12-29-88
5+00	156.3	147.18	9.1									
					5+85.8 TAP		20898		222 N Pine Grove		6-20-87	
6+00	156.6	147.59	9.0									
	158.03	147.98 OUT 148.03 IN	10.1	0+00 EXIST 6+95.8	6+37.8 TAP		26017		226 Pine Grove		8-27-90	
7+00												
					7+05.8 TAP		22497		11831 W 1st		1-25-87	
					7+54.2 TAP		71-892397		11821 W 1st		12-10-91	
8+00	156.4	148.46	7.9									
					8+23.8 TAP		22209		11811 W 1st		12-13-88	
9+00	156.0	148.87	7.1									
	156.89	149.10 OUT 149.27 IN	7.8	9+57.2	8+91.2 TAP	9+35.2 TAP	18390	20041	11720 W 1st	11710 W 1st	5-21-87	2-3-86
	157.09	149.44	7.7	9+95.0	9+50.2 TAP	9+35.2 TAP	19173		11731 W 1st		9-30-87	
LINE 1A	0+00	157.09	146.64	10.5	0+00							
1+00	156.0	147.03	9.0									
	156.90	147.21	9.7	1+47.0	0+58.0 TAP		19088		11826 W 1st		9-17-87	
					1+15.0 TAP		21102		11816 W 1st		7-18-88	
LINE 1B	0+00	158.03	148.04	10.0	0+00							
	157.99	148.34	9.7	0+54.7	4" stub SE		19900	20326	11728 W 1st	11804 W 1st	12-29-87	3-23-88
LINE 2	2+08.2	156.3	144.66	11.6								
	156.64	145.02 OUT 145.24 IN	11.6	2+89.2	2+74.2 TAP		18388		11702 W 1st		5-21-87	
3+00	156.4	145.43	11.0									
					3+05.2 TAP		18790		209 N Pine Grove		7-29-87	
					3+52.2 TAP		20159	23450	11711 W 1st	11706 W 1st	2-27-88	6-29-89
4+00	156.3	147.23	9.1									
	156.39	147.54	8.9	4+17.2	4" stub NW		20613		11721 W 1st		5-17-88	