

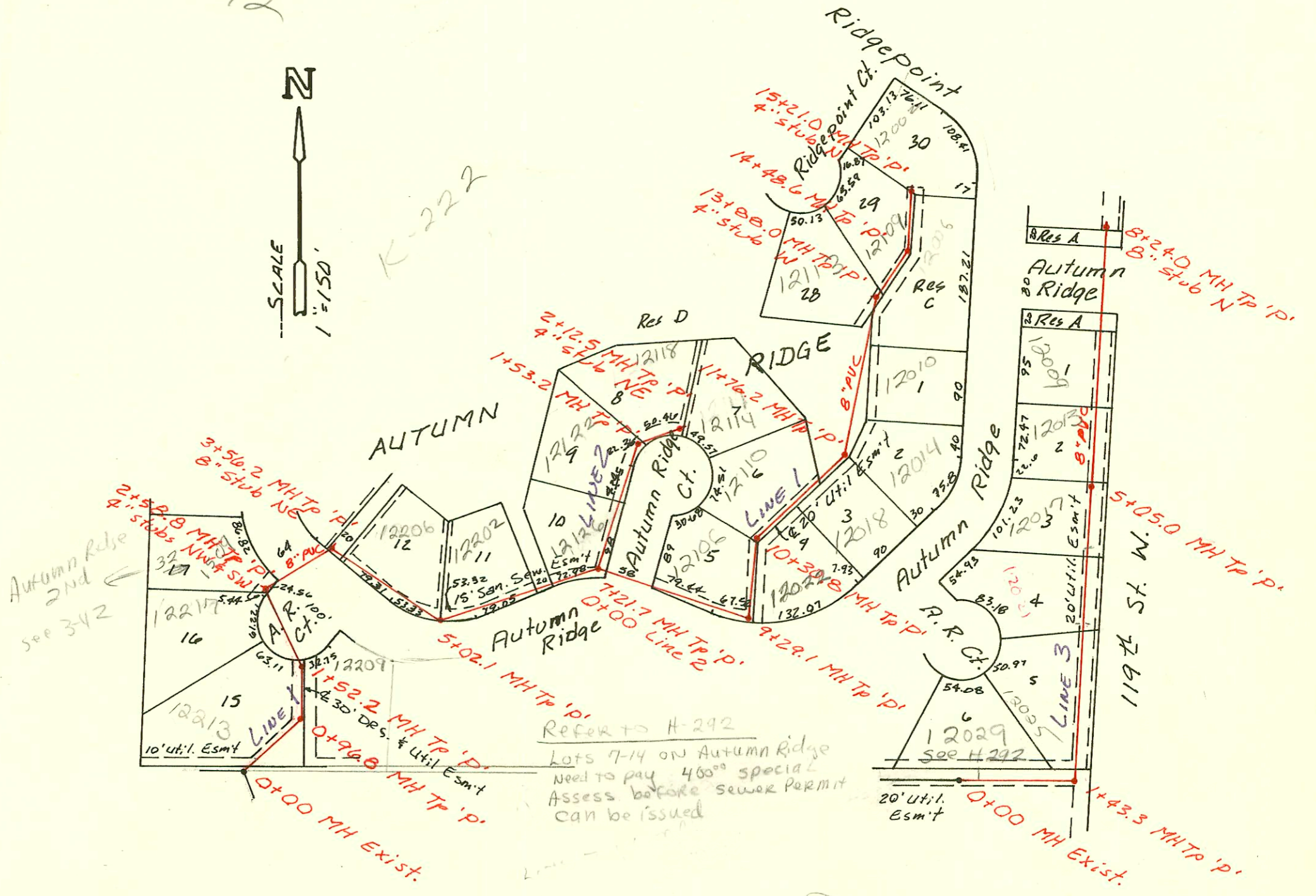
LAT 22B SW INTERCEPTOR  
468-76-245-81613-000-000-001  
Built By Stannard Const.  
Booked 3-2-87 from AR-3

HP

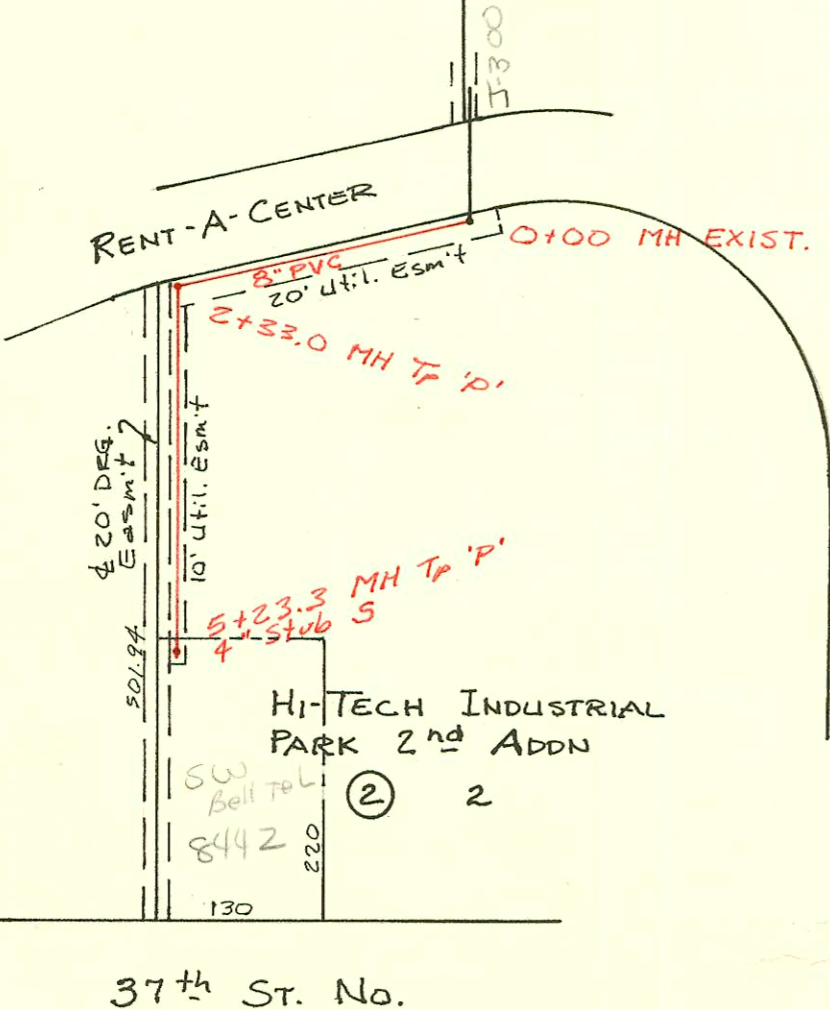
3-42



K-222

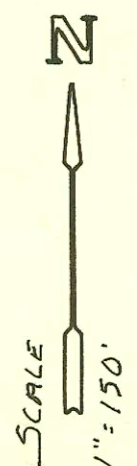


Check Plot



Priv. San. Sew. Ext. for Bell Telephone  
Facility at 37th St. No. and Comotara  
468-76-245-80001-000-000-144  
Built By Wildcat Const.  
Booked 2-18-88 From BR-124

HP



CONSTRUCTION RECORD							SERVICE RECORD					
STATION	ELEVATION		Depth	MANHOLE	4-INCH "Y" BRANCHES		No. of Permit		House Number		DATE OF PERMITS	
	Ground	Grade			North West	South East	North West	South East	North West	South East	North West	South East
LAT 228 LINE 1 0+00	160.73	146.34	14.4	0+00 EXIST.								
	162.77	146.79 OUT 146.89 IN	16.0	0+96.8	0+23.5 4" Riser W		17453		17453		12-12-86	
1+00	162.4	146.90	15.5									
	163.66	147.09	16.6	1+52.2								
2+00	162.5	147.31	15.2									
	164.26	147.58 OUT 147.65 IN	16.7	2+58.8	4" stub NW 4" stub SW		18289	18289	1501 12213	12213	6-10-91	5-7-87
3+00	163.3	147.90	15.4									
	164.88	148.25 OUT 150.14 IN	16.6	3+56.2	8" stub N							
4+00	163.9	150.31	13.6		3+81.1 4" Riser N.							
5+00		150.71										
	163.84	150.72 OUT 150.95 IN	13.1	5+02.1	4" stub N 5+43 OK		18070		12206		4-2-87	
6+00	162.9	151.27	11.6		5+68.1 TAP		25239		12202		4-27-90	
7+00	163.4	151.59	11.8		6+93.7 TAP		22329		12102		1-11-87	
	164.15	151.66 OUT 151.78 IN	12.5	7+21.7								
8+00	163.7	152.12	11.6		8+55 TAP		20625		12106		5-5-87	
9+00	164.0	152.55	11.5									
	164.71	152.68 OUT 152.92 IN	12.0	9+29.1	9+54.1 TAP		23264		12022		6-15-89	
10+00	164.7	153.28	11.4									
	165.41	153.44 OUT 153.59 IN	12.0	10+30.8			19155		12018		7-29-87	
11+00	164.1	153.88	10.2		4" stub NW 10+92.85		93-4332		12110		2-26-93	
	163.96	154.19 OUT 154.21 IN	9.8	11+76.2			21687		12014		11-7-88	
12+00	163.5	154.32	9.2									
					12+90.0 TAP		17962		12010		3-12-87	
13+00	163.6	154.78	8.8									
	164.58	155.19 OUT 155.21 IN	9.4	13+88.0	4" stub W		20921		12115		6-23-87	
14+00	164.0	155.26	8.7									
	165.25	155.46 OUT 155.66 IN	9.8	14+48.6	14+42.6 TAP		92-3224	17961	12104	12006	9-28-92	3-18-87
15+00	165.4	155.84	9.6									
	166.08	155.92	10.2	15+21.0	4" stub N		19151		12105		9-25-87	
LINE 2 0+00	164.15	154.30	9.9	0+00								
1+00	164.2	154.69	9.5		1+06.2 TAP		22969		12122		4-21-89	
	165.03	154.90 OUT 155.09 IN	10.1	1+53.2								
2+00	164.7	155.45	9.3		2+05.2 TAP		20126		12118		2-18-88	
	165.25	155.54 OUT 155.80 IN	9.7	2+12.5	4" stub NW		19598		12119		11-18-87	
LINE 3 0+00	167.57	152.94	14.6	0+00								
1+00	167.8	153.27	14.5		0+23.7 4" Riser N							
	168.80	153.41	15.4	1+43.3								
2+00	168.0	153.58	14.4									
					2+30 4" Riser W		22386		12125		1-10-87	
3+00	167.7	153.89	13.8									
					3+33 4" Riser W		11-121-7		12021		1-28-92	
4+00	167.5	154.19	13.3									
					4+26 4" Riser W		10321		12014		6-2-87	
5+00	167.3	154.49	12.8									
	167.77	154.51	13.3	5+05.0								
6+00	167.2	154.78	12.4		5+16 4" Riser W		18149		12013		4-20-87	
7+00	166.7	155.06	11.6									
					6+11 4" Riser W		17960		12009		3-18-87	
8+00	166.3	155.34	11.0									
	167.02	155.41	11.6	8+24.0	8" stub N							
Priv. S. S. EXT. FOR BELL TELEPHONE FACILITY AT 37th & COMOTARA												
0+00	213.41	202.30	11.1	0+00								
1+00	214.0	202.70	11.3									
2+00	212.8	203.10	9.7									
	212.20	203.23 OUT 203.33 IN	9.0	2+33.0								
3+00	212.0	203.60	8.4									
4+00	212.6	204.00	8.6									
5+00	212.5	204.40	8.1									

212.80 204.50 8.3 5+23.3 4" 4" stub S  
 Form #192-020 (July, 1981)  
 No. ?  
 212.80 204.50 8.3 5+23.3  
 1-4" WYE - Tied back to existing old sewer  
 (TWIN CO. 2 Kickouts, 1V45)