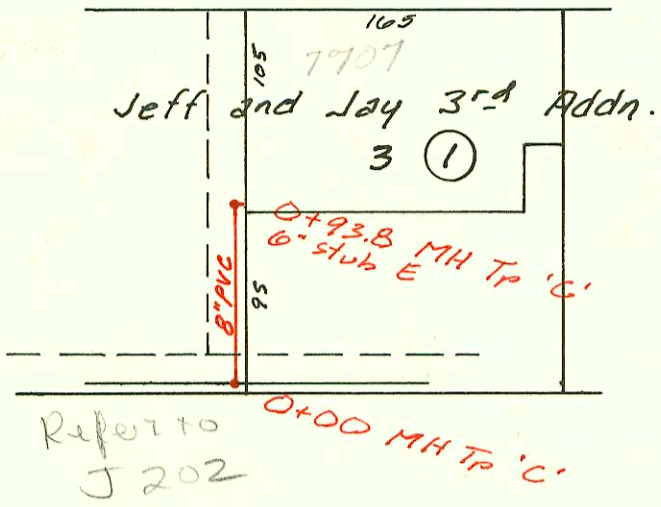
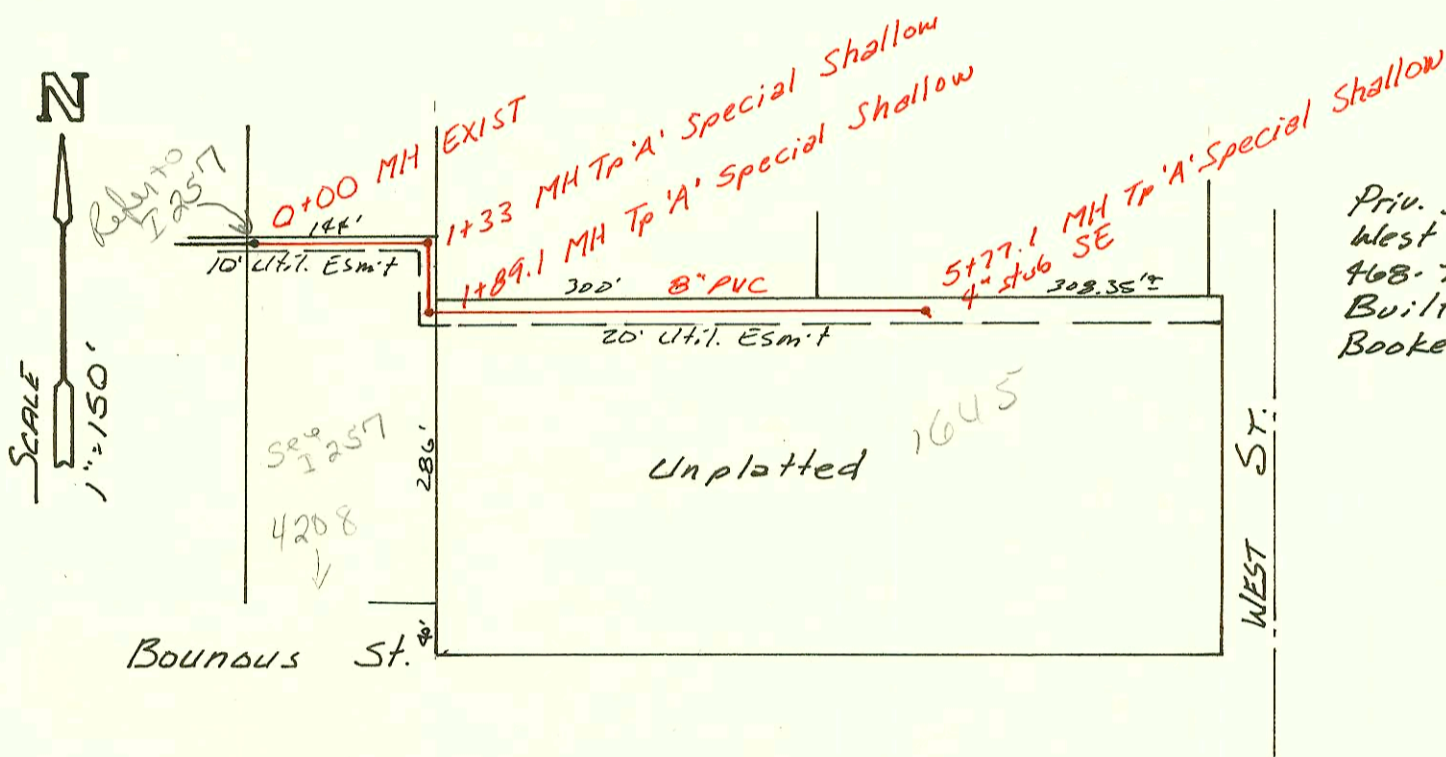


29th St. No.

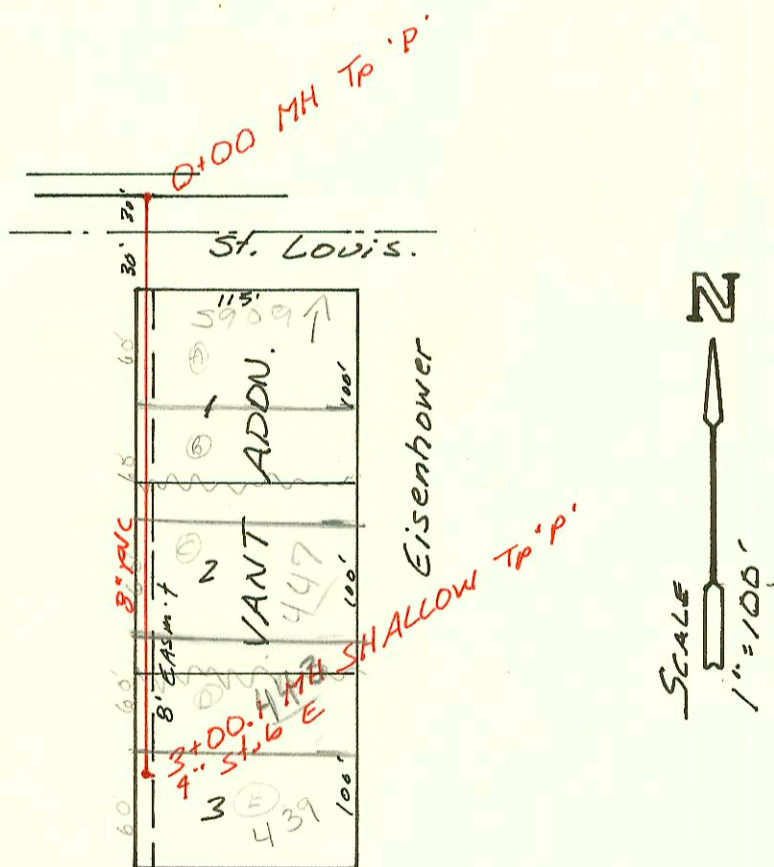


Private Sanitary Sewer to serve Lot 3, Blk 1 Jeff and Jay 3rd Addn. 468-76-245-80001-000-000-098 Built By Mid-States Const. Booked 3-31-87 from As Builts

12-32



Priv. San. Sewer for Sellers Tractor at West & Bounous 468-76-245-80001-000-000-094 Built By Triple 'C' Booked 6-23-87 from As Built.



Priv. San. Sewer to Serve Lots 1, 2 & 3 Vant Addn. 468-76-245-80001-000-000-097 Built By Forshee Plumbing Booked 6-22-87 From MSP-#18

CONSTRUCTION RECORD						SERVICE RECORD						
STATION	ELEVATION		Depth	MANHOLE	4-INCH "Y" BRANCHES		No. of Permit		House Number		DATE OF PERMITS	
	Ground	Grade			North West	South East	North West	South East	North West	South East	North West	South East
Priv. S.S. for Golden Hills 2 <sup>nd</sup> (cont)												
2+00	159.9	148.93	11.0		2+26.5 TAP	1+70.0 TAP	19253	18597	11533 w Kenny	11406 w BIRCH	10/06/87	6-25-87
	161.22	150.08 OUT 151.77 IN	11.1	2+95.5		2+51.5 TAP		18647		1019 Lanning		7-5-87
	162.45	151.99	10.5	2+98.1		4" stub SE		18598		1015 w Lanning		6-25-87
LINE 6												
0+00	160.70	148.09	12.6	0+00	0+34.8 TAP			19036		1019 Cardington		9-10-87
					0+37.0 TAP		23220		1014 Golden Hills		5-24-87	
1+00	160.9	148.54	12.4			1+07.8 TAP		18864		1015 Cardington		8-10-87
					1+07.2 TAP	1+07.8 TAP	23229	18863	1010 Golden Hills	1011 Cardington	5-24-87	8-10-87
2+00	161.0	148.98	12.0		2+01.2 TAP	2+42.8 TAP	23228	18743	1016 Golden Hills	1007 Cardington	5-24-87	7-22-87
	161.43	149.43	12.0	2+99.8	4" stub W	4" stub E	21246	18649	1002 Golden Hills	1003 Cardington	8-2-88	7-8-87
LINE 7												
0+77.9	146.4	137.58	8.8		0+78 TAP		2105		11308 w Murdock		4-10-87	
1+00	146.6	137.66	8.9			1+06.8 TAP		18077		11302 w Bekemeier		4-8-87
					1+86.6 TAP		18106		11307 w Murdock		4-10-87	
2+00	148.1	138.02	10.1		2+12.6 TAP	2+05.6 TAP	18107	18078	11311 w Murdock	11306 w Bekemeier	4-10-87	4-8-87
	149.04	142.92 IN	11.0	2+17.6	2+94.8 TAP	2+95.8 TAP	18108	18079	11315 w Murdock	11310 w Bekemeier	4-10-87	4-8-87
3+00	151.0	144.47	6.5			3+47.8 TAP		18080		11314 w Bekemeier		4-8-87
	152.52	145.20 OUT 145.26 IN	7.3	3+38.8	3+58.8 TAP		18109		11319 w Murdock		4-10-87	
4+00	154.5	146.42	8.1		4+39.8 TAP	4+42.8 TAP	12310	18081	11403 w Murdock	11318 w Bekemeier	5-12-87	4-8-87
5+00	158.5	148.31	10.2		5+27.2 TAP	5+14.4 TAP	18336	18082	11407 w Murdock	11324 w Bekemeier	5-15-87	4-8-87
					5+99.2 TAP	5+58.8 TAP	18337	18083	11411 w Murdock	11326 w Bekemeier	5-15-87	4-8-87
6+00	162.0	150.20	11.8		6+28.2 TAP	6+30.8 TAP	18338	18084	11415 w Murdock	11330 w Bekemeier		4-8-87
7+00	164.7	152.09	12.6		7+38.2 TAP	7+26.2 TAP	18339	18092	11419 w Murdock	11334 w Bekemeier	5-15-87	4-10-87
	166.08	152.81 OUT 152.83 IN	13.3	7+38.2	7+78.2 TAP	7+81.2 TAP	18340	18094	11423 w Murdock	11402 w Bekemeier	5-15-87	4-10-87
8+00	165.5	153.09	12.4									
					8+64.2 TAP	8+63.2 TAP	18341	18100	11503 w Murdock	11406 w Bekemeier	5-15-87	4-10-87
9+00	165.1	153.50	11.6		9+10.8 TAP	9+35.2 TAP	18342	18101	11507 w Murdock	11410 w Bekemeier	5-15-87	4-10-87
					9+71.2 TAP		18343		11511 w Murdock		5-15-87	
10+00	164.7	153.92	10.8			10+09.6 TAP		18102		11414 w Bekemeier		4-10-87
					10+67.6 TAP	10+47.6 TAP	18344	18103	11515 w Murdock	11418 w Bekemeier	5-15-87	4-10-87
11+00	164.1	154.34	9.8									
	164.01	154.42	9.6	11+19.6	4" stub NW	4" stub SW	18345	18104	11519 w Murdock	11422 w Bekemeier	5-15-87	4-10-87
LINE 8												
2+14.8	158.7	145.31	13.4		2+48.9 TAP		17800		11323 Bekemeier		2-12-87	
						2+56.9 TAP	17437		11307 Bekemeier	11318 Cindy		12-11-86
3+00	160.7	146.40	14.3		3+13.9 TAP	3+00.9 TAP	17801	17444		11522 Cindy		12-12-86
						3+94.9 TAP	17445		11331 Bekemeier	11326 Cindy		12-12-86
4+00					4+10.9 TAP		17802		11403 Bekemeier		2-12-87	
	163.26	147.70 OUT 153.80 IN	15.4	4+00.9	4+71.9 TAP	4+61.9 TAP	17803	17446	11403 Bekemeier	11402 Cindy	2-12-87	12-12-86
5+00	165.0	154.55	10.5		5+16.9 TAP	5+45.9 TAP	17804	17447	11407 Bekemeier	11406 Cindy	2-12-87	12-12-86
6+00	167.0	155.31	11.7		6+07.9 TAP	6+09.1 TAP	17805	17448	11411 Bekemeier	11410 w Cindy	2-12-87	1-6-87
					6+78.1 TAP	6+79.1 TAP	17806	17449	11413 Bekemeier	11414 w Cindy	2-12-87	1-6-87
7+00	166.0	156.08	9.9		7+54.1 TAP	7+24.1 TAP	17807	17450	11417 Bekemeier	11418 w Cindy	2-12-87	1-6-87
	165.45	156.73	8.7	7+86.1	4" stub NW	4" stub SW	17808	17451	11423 Bekemeier	11422 w Cindy	2-12-87	1-6-87
Priv. S.S. for LEFF & Jay 3 <sup>rd</sup> Addn. Lot 3, B/L 1												
0+00	196.00	186.26	9.7	0+00								
	195.75	186.64	9.1	0+93.8		6" stub E		17846		1107 E 59th A)		11-3-86
Priv. San. Sewer for Sellers Tractor EXIST.												
0+00	112.18	107.85	4.3	0+00								
1+00	111.4	108.15	3.5									
	112.25	108.25 OUT 108.35 IN	4.0	1+33.0								
	112.50	108.52 OUT 108.62 IN	4.0	1+89.1								
2+00	112.2	108.65	3.6									
3+00	112.6	108.95	3.7									
4+00	112.5	109.25	3.3									
5+00	112.7	109.55	3.2									
	113.30	109.78	3.5	5+77.1		4" stub SE		17548		1045 West		12-30-86
Priv. S.S. for Lots 1, 2 & 3 Vent Addn.												
0+00	120.4	113.77	6.8	0+00						5909 w St. Louis		8-24-87
1+00	120.4	114.07	6.3									
2+00	120.4	114.37	6.0					19836		4071 Eisenhauk		2-20-87
3+00								19772		403 N Eisenhauk		10/07/87
	120.9	114.67	6.2	3+00.1		4" stub E		21141		439 Eisenhauk		7-22-87