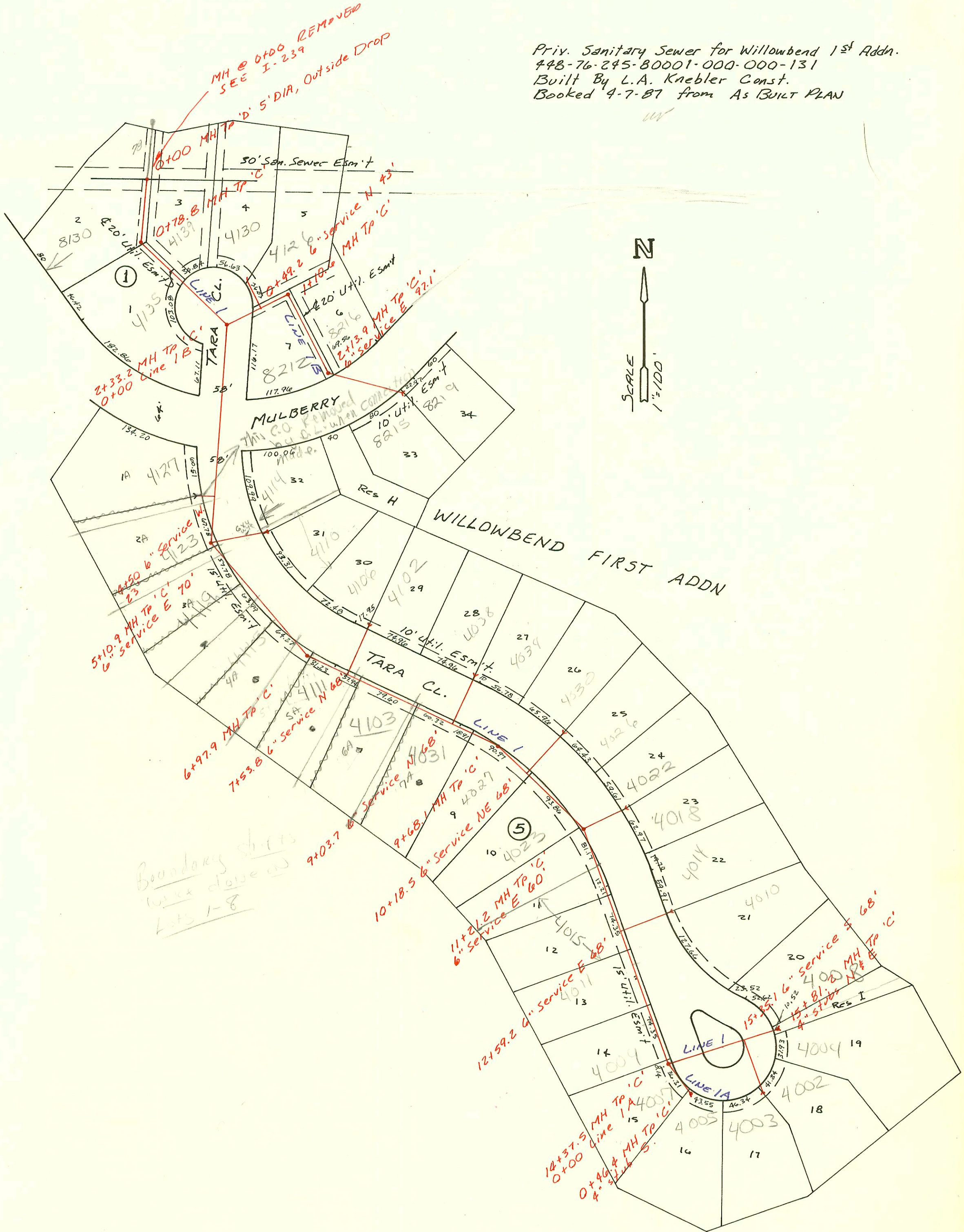


Priv. Sanitary Sewer for Willowbend 1st Addn.  
448-76-245-80001-000-000-131  
Built By L.A. Knebler Const.  
Booked 4-7-87 from As BUILT PLAN



CONSTRUCTION RECORD							SERVICE RECORD						
STATION	ELEVATION		Depth	MANHOLE	4-INCH "Y" BRANCHES		No. of Permit		House Number		DATE OF PERMITS		
	Ground	Grade			North West	South East	North West	South East	North West	South East	North West	South East	
Priv. San. Sewer for WILLOWBEND 1 <sup>st</sup> ADDN.													
LINE 1	0+00	192.10	182.48	9.6	0+00								
		192.10	182.92 OUT	9.2	0+78.8	4" SDR 35 59.8 top	4" SDR 35 1+69.8 top	92-2394-7	91-35611-7	8130 Mulberry	4139 TARA CR	2-20-92	10-17-91
	1+00	191.6	183.22	8.4									
						4" SDR 35 1+31.8 N/C		95-866-7		4135 TARA CR		1-17-95	
	2+00	193.5	183.56	9.9									
		193.40	183.67 OUT	9.7	0+00 L-1B								
	3+00	194.0	184.14	9.9	2+33.2								
	4+00	194.2	184.65	9.6									
	4+50					clean out removed by D.L.		98-10554-7		4127 N TARA CR		5-3-93	
	5+00	196.0	185.17	10.8									
		196.70	185.23 OUT	11.5	5+10.9	4" SDR 35 5+04.9 top	6" Service E Top 196.67 Flo 186.22	93-5412-7	16774	4123 TARA CR	4110 TARA CR	3-16-93	10-10-86
	6+00	197.3	186.43	10.9									
		199.50	187.57 OUT	11.9	6+97.9	4" SDR 35 6+25.9 top	6" Service E Top 208.65 Flo 198.80	93-17457-7		4119 TARA CR	4115 TARA CR	6-24-93	7-7-93
	7+00		187.97										
						7+29.4 TIF		19360		4111 TARA CR		10/20/87	
	7+53.8					6" Service N Top 200.50 Flo 190.62		16712	17035	4106 TARA	4102 TARA	7-29-86	9-25-86
	8+00	201.0	190.26	10.7									
						8+19.1 TIF		20168		4031 TARA	4103 TARA CR	2/24/88	12/11/87
	9+00	203.0	192.56	10.4									
						6" Service N Top 203.90 Flo 194.22		17405		4034 TARA		12-8-86	
	9+03.7	205.3	194.12 OUT	11.2	9+68.1	9+54.5 TIF		21523		4027 TARA		9-20-88	
	10+00	205.5	195.44	10.1									
						6" Service NE Top 206.80 Flo 196.74		17657	17656	4030 TARA	4026 TARA	1-20-87	1-20-87
	11+00	207.5	195.86	11.6									
		208.2	195.95 OUT	12.3	11+21.2	4" SDR 35 11+16.2 N/C	6" Service E Top 208.65 Flo 198.80	95-19657	95-20817	4033 TARA CR	4022 TARA	2-13-95	12-9-95
	12+00	208.2	198.56	9.6									
						4" SDR 40 12+59.2		2000 01724		4054 TARA CR		7-26-80	
	12+59.2					6" Service E Top 209.50 Flo 200.23		94-19508-7	23951	4014 N TARA CR	4010 TARA CR	11-28-91	9-25-89
	13+00	208.8	199.32	9.5									
						13703.5 103' 189' 11" 4" SDR 35 13+20.9		17634		4011 TARA	4009 TARA	1-13-87	4-19-95
	14+00	209.4	200.09	9.3									
		210.3	200.38 OUT	9.9	0+00 L-1A								
	15+00	210.3	200.76	9.5	14+32.5								
						4" SDR 35 15+37.5 L-1							
	15+35.1	210.3	201.09	9.2	15+81.2	6" Service S Top 210.55 Flo 202.16		94-11217-5		4005 TARA	4002 TARA	12-1-94	12-19-95
LINE 1A	0+00	210.3	200.48	9.8	0+00	4" stub N / 4" stub E		93-2534-7	92-2224-7	4008 TARA	4004 TARA CR	7-22-92	8-18-92
LINE 1B	0+00	193.40	183.79	9.6	0+00	4" stub S		94-19507-7		4001 N TARA CR	4005 N TARA	11-28-94	5-5-95
	0+49.2					6" Service N Top 193.20 Flo 185.07		19235		4130 TARA CR	8212 Mulberry	10/20/87	5-19-95
	1+00	193.5	184.05	9.5									
		193.70	184.08 OUT	9.6	1+10.6	4" SDR 35 1+60.9 top		94-5265-7		8216 E. Mulberry		4-12-94	
	2+00	195.2	184.57	10.6									
		195.80	184.63	11.2	2+13.9	6" Service E Top 206.80 Flo 185.76		16773	17158	8215 Mulberry	8214 Mulberry	10-10-86	10-20-86
LINE 2	0+00	196.73	184.78	12.0	0+00								
						0+06.0 TIF		18664		8504 N Mulberry		7-10-87	
	1+00	197.1	186.36	10.7									
						(58.5' SDR 40) 1+20 TIF		21932		4133 Plum Tree		11-14-88	
	1+90					4" SDR 35 1+80 TIF		92-3584-7		4131 Plum Tree		10-12-92	
	2+00	198.6	187.93	10.7		6" Service E Top 198.80 Flo 188.95		93-3875-7	22092	4130 Plum Tree	4134 Plum Tree	2-23-93	11-28-88
						4" SDR 35 2+40.0		93-2645-7		4129 Plum Tree		10-8-93	
	3+00	200.5	189.51	11.0									
						2+28.7 TIF		2190		4127 Plum Tree		7-29-88	
	3+40					6" Service E Top 201.30 Flo 191.35		22130	22091	4132 Plum Tree	4122 Plum Tree	11-24-88	11-28-88
						3+91.7 TIF		17701		4125 Plum Tree		4-28-87	
	4+00	202.3	191.08	11.2									
						4" PVC 40 4+68.2 TIF		92-8708-7		4123 N Plum Tree		6-12-92	
	5+00	204.1	192.66	11.4									
		205.10	193.06 OUT	12.0	5+25.7	6" Service NE Top 204.95 Flo 194.15		16205	91-3369-7	4121 Plum Tree	4120 Plum Tree	4-24-87	9-25-91
	6+00	205.6	193.36	12.2									
						4" PVC 40 6+04.7 top		93-3874-7		4121 Plum Tree		2-23-93	
						4" SDR 35 6+87.3 N/C		93-9948-7		4119 Plum Tree		4-28-93	
	7+00	205.5	193.75	11.8									
		205.88	193.86 OUT	12.0	7+27.3	6" Service NE Top 206.40 Flo 194.87		92-2935-7		4119 Plum Tree		11-12-93	
						7+34.3 TIF		22391		4115 Plum Tree		1-12-89	
						4" SDR 35 12-17.8 TIF		91-3822-7		4110 Plum Tree	4112 Plum Tree	1-29-92	12-5-91

Form #192-020 (July, 1981) 93-3875-7-4136 N Plum Tree - 7/22/93 - N/C. 4" PVC 40  
 14' Fall D.L. tied onto leader 190' South of MH 1+90.6  
 93-24751-7 9-16-93 4114 N TARA CR - P.L. Reid permission to sit a 6x4 wye  
 on 6" leader approx 54.6' N of MH 5+10.9  
 (was unable to use Double wye) 4" SDR 40 PVC