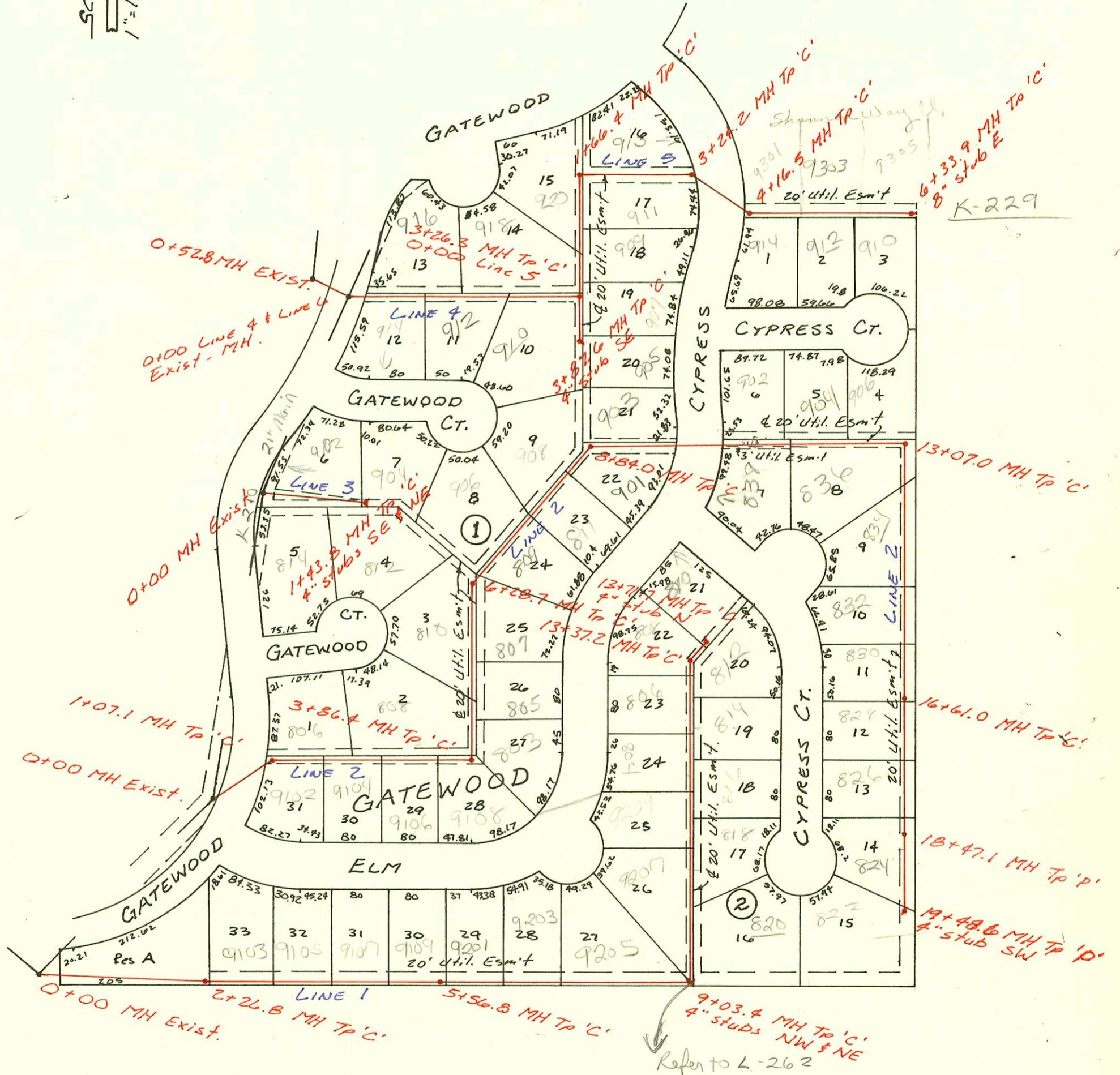


1346

LAT 4, MAIN 24, WAR INDUSTRIES SEWER  
468-76-245-81648-000-000-001  
BUILT BY Utility CONTR.  
BOOKED 5-21-87 FROM AG-14A

WP ✓



Priv. S.S. Supplement to LAT 4  
MAIN 24 - W15.  
468-76-245-80001-000-000-137  
Built By Stannard Coast.  
Booked 12-14-87 From AS-Built Plan

CONSTRUCTION RECORD

SERVICE RECORD

LAT 4,  
LINE 1

Line 2

STATION	ELEVATION		Depth	MANHOLE	4-INCH "Y" BRANCHES		No. of Permit		House Number		DATE OF PERMITS	
	Ground	Grade			North West	South East	North West	South East	North West	South East	North West	South East
MAIN 24, W/S												
0+00	158.63	149.73	8.9	EXIST 0+00								
1+00	160.7	151.44	9.3									
2+00	162.3	153.14	9.2									
	164.49	153.60 out 155.12 in	10.9	2+26.8	2+52.8 TAP		19055		9105 E ELM		9-14-87	
3+00	163.2	155.61	7.6		3+60.8 TAP		18436		9105 E ELM		6-3-87	
4+00	164.0	156.27	7.7		4+32.8 TAP		18378		9107 E ELM		5-20-87	
5+00	164.6	156.93	7.7		5+32.8 TAP		19021		9109 E ELM		9-15-87	
	166.25	157.31	8.9	5+56.8								
6+00	166.3	157.49	8.8		6+13.8 TAP		19457		9201 E ELM		10/30/87	
					6+64.8 TAP		19106		9205 E ELM		9-22-87	
7+00	168.5	157.91	10.6		7+97.4 TAP		19769		9205 E ELM		11/24/87	
8+00	170.3	158.33	12.0									
9+00												
	173.43	158.77 out 161.17 in	14.7 12.3	9+03.4	4" stub NW 4" stub NE		2000-0111 18363	18817	9207 E ELM	820 N CYPRESS	7-26-88 5-19-87	8-3-87
10+00	174.3	161.54	12.8		10+01.5 Riser 11+33.1 TAP		2000-01692 19926	18370	9207 E ELM	818 N CYPRESS	7-24-88 1-5-88	5-19-87
11+00	175.8	161.93	13.9									
					11+40 4" RISER E		20178					
12+00	175.1	162.31	12.8		12+14.2 TAP 12+99.2 TAP		20178 18365	19057 19105	804 CYPRESS 806 CYPRESS	816 CYPRESS 817 CYPRESS	2-26-88 5-19-87	9-14-87 9-28-87
13+00	172.6	162.70	9.9									
	172.34	162.84	9.5	13+37.2	13+42.2 TAP		18296	20003	808 N CYPRESS	812 CYPRESS	5-21-87	1-27-88
	171.90	162.93	9.0	13+71.7	4" stub N		20322		810 N CYPRESS		3-22-88	
0+00	165.00	155.16	9.8									
1+00	164.2	155.54	8.7									
	165.10	155.57	9.5	1+07.1	1+82.6 TAP		18122	18435	802 N CYPRESS	9102 E ELM	6-2-87	6-3-87
2+00	168.8	155.96	12.8		2+58.35 TAP			18714		9104 E ELM		7-16-87
3+00	169.1	156.37	12.7									
	170.78	156.73	14.1	3+86.4	3+06.4 TAP		18437		9106 E ELM		6-3-87	
					3+58.9 TAP		18376		9108 E ELM		5-20-87	
4+00	170.5	156.80	13.7		4+04.4 TAP		19040		803 N CYPRESS		9/10/87	
					4+55.9 TAP		18367	18799	808 N CYPRESS	805 N CYPRESS	5-19-87	7-20-87
5+00	171.2	157.29	13.9		5+49.7 TAP			18800		807 N CYPRESS		7-30-87
					5+78.7 TAP		18369		810 N CYPRESS		5-19-87	
6+00	170.0	157.78	12.2									
	169.54	157.92	11.6	6+28.7	4" stub 6+60.9 TAP		18434		906 N CYPRESS		6-2-87	
7+00	171.7	158.24	13.5		7+97.7 TAP			18935		804 N CYPRESS		8-21-87
8+00	173.3	158.70	14.6									
	169.04	159.08	10.0	8+84.0	8+71.0 TAP		18377		904 CYPRESS		5-20-87	
9+00	168.2	159.21	9.0		9+26.0 TAP		19768	23214	908 CYPRESS	901 CYPRESS	11-24-87	5-23-89
10+00	169.4	160.02	9.4		10+75 TAP		944007 944054 18366		902 CYPRESS 902 N CYPRESS		3-22-94 3-22-94 5-19-87	
11+00	170.5	160.83	9.7		11+94 TAP			18710	808 N CYPRESS		7-16-87	
					11+42.0 TAP							
12+00	172.3	161.63	10.7		12+87.0 TAP		19056		904 N CYPRESS		9-14-87	
					12+45.0 TAP		19925	19952	906 N CYPRESS	836 N CYPRESS	1-5-88	1-14-88
13+00	174.6	162.44	12.2									
	174.89	162.50	12.4	13+07.0								
14+00	173.5	162.96	10.5		14+31 TAP		18587		804 CYPRESS		6-26-87	
15+00	174.0	163.45	10.6		15+48.0 TAP		18366		832 CYPRESS		8-21-87	
16+00	175.0	163.94	11.1		16+00.0 TAP		18712		830 N CYPRESS		7-16-87	
	176.89	164.24	12.7	16+61.0								
17+00	176.8	165.15	11.7		17+26.0 TAP		18375		826 N CYPRESS		5-20-87	
					17+58.2 TAP		19070		826 CYPRESS		9-15-87	
18+00	178.5	167.48	11.0									
	179.12	168.87 out 168.85 in	10.3	18+47.1	18+63.2 TAP		19058		804 N CYPRESS		9-14-87	
19+00	179.6	169.08	10.5									
	179.94	169.29	10.7	19+48.6	4" stub SW		18397		802 N CYPRESS		5-21-87	