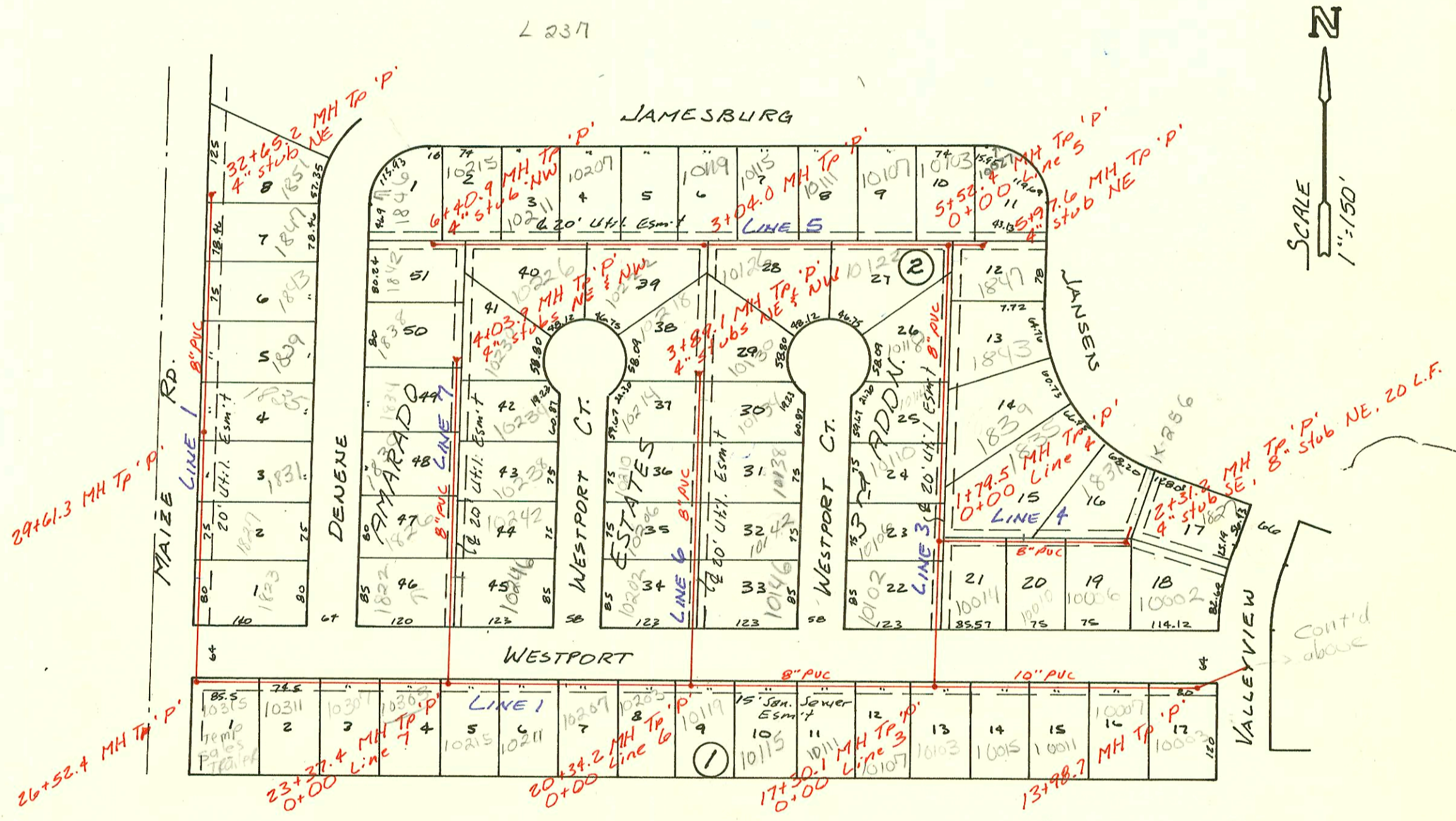


STONEGATE ESTATES



Plot 4-39

Priv. San. Sewer For AMARADO ESTATES 3rd
 468-76-245-80001-000-000-107
 Built By Utility Contr.
 Booked 7-9-87 from DWV-11

(House No. San. Sewer)
 #92-45615-7 12-22-92-10315 w. westport - McCullough 25+92.4 + AR 2/11/87 PUC 40

Priv. San
LINE 1

CONSTRUCTION RECORD						SERVICE RECORD								
STATION	ELEVATION		Depth	MANHOLE	4-INCH "Y" BRANCHES		No. of Permit		House Number		DATE OF PERMITS			
	Ground	Grade			North West	South East	North West	South East	North West	South East	North West	South East		
SEWER FOR AMARADO ESTATES 3 rd EXIST. 0+00														
0+00	155.76	143.78	12.0	0+00										
1+00	146.8	143.97	2.8											
2+00	155.0	144.15	10.9											
	154.43	144.18	10.3	2+15.4	8" stub N	2+82.4 TAP	26008		9610	W 17th NO		8-24-80		
3+00	154.1	144.33	9.8		2+69.4 TAP	3+11.4 TAP	20910	23163	9619	W 18th NO	9611	W 17th NO	6-21-88	5-12-89
4+00	154.4	144.50	9.9		4+18.4 TAP	4" SUR 35 3+96.4 TAP	23876	215397	9702	W 18th	9702	W 17th	9-15-89	4-30-91
	154.94	144.58	10.4	4+46.4	8" stub N									
5+00	154.6	144.68	9.9		4+75.4 TAP 4" SUR 35 4+50.4 TAP 5+35.4 TAP	4+93.4 TAP	31-2747-7	212601	97137	W 18th	9710	W 17th	7-19-91	2-26-90
							92-612-7	21298	9711	W 18th	9710	W 17th NO		8-12-88
6+00	155.0	144.87	10.1		6+15.4 TAP	6+30.4 TAP	23147	26562	9715	W 18th	9714	W 17th NO	5-12-89	11-15-90
					7+06.4 TAP	6+77.9 TAP	23895	19917	9714	W 18th	9718	W 17th NO	9-15-89	11-6-88
							23607		9718	W 18th	9718	W 17th NO	7-27-89	2-26-89
7+00	155.4	145.06	10.3		7+15.4 TAP	7+11.4 TAP		23602	9805	W 18th	9802	W 17th NO		6-24-88
	155.81	145.12	10.7	7+31.4	8" stub N	7+79.4 TAP	24339	20772	9804	W 18th	9806	W 17th NO	11-21-89	6-24-88
8+00	155.6	145.24	10.4		8+32.4 TAP	8+37.9 TAP	22743	20973	9804	W 18th	9806	W 17th NO	3-17-89	6-24-88
9+00	155.9	145.41	10.5			9+23.0 TAP		20974	9810	W 18th	9810	W 17th NO		6-24-88
					9+65.4 TAP	9+92.4 TAP	24389	21297	9811	W 18th	9814	W 17th NO	11-27-89	8-12-88
10+00	156.1	145.58	10.5		4" SUR 35 9+82.4 TAP	10+42.4	31-2748-7	24474	9815	W 18th	9902	W 17th	7-19-91	12-6-84
	156.78	145.73 OUT 145.75 IN	11.1	10+86.4	8" stub N									
11+00	156.4	145.78	10.6		11+40.4 TAP		25137	96-5668-7	9911	W 18th	9906	W 17th	4-13-90	4-25-90
						11+72.4 TAP		23166	9910	W 18th	9910	W 17th		5-12-89
12+00	156.2	145.96	10.2											
	156.63	146.14	10.5	0+00 L-2 12+97.4		12+22.4 TAP		19628	9914	W 18th	9914	W 17th NO		11-20-87
13+00														
	156.31	146.31	10.0	13+98.7										
14+00						14+05.7 TAP		20909	10003	W 18th	10003	W 17th		6-21-88
						14+98.7 TAP		20251	10001	W 18th	10001	W 17th		3-9-88
15+00	156.4	146.49	9.9											
						15+66.7 TAP		19266	10011	W 18th	10011	W 17th		10-09-87
16+00	156.8	146.67	10.1			16+36.6 TAP		19267	10015	W 18th	10015	W 17th		16-07-87
17+00	157.0	146.86	10.1			17+02.1 TAP		19264	10105	W 18th	10105	W 17th		10-07-87
	157.28	146.91 OUT 147.10 IN	10.4	0+00 L-3 17+30.1		17+53.1 TAP		19265	10107	W 18th	10107	W 17th		10-19-87
18+00	157.2	147.31	9.9			18+83.2 TAP		26556	10111	W 18th	10111	W 17th		11-16-90
						19+45.2 TAP		19441	10115	W 18th	10115	W 17th		10-29-87
19+00	157.7	147.61	10.1			20+09.2 TAP			10119	W 18th	10119	W 17th		
						20+64.2 TAP		20241	10203	W 18th	10203	W 17th		3-25-88
20+00	158.0	147.91	10.1			21+89.4		20336	10207	W 18th	10207	W 17th		3-25-88
	158.43	148.01	10.4	0+00 L-6 20+34.2		22+39.4 TAP		20852	10211	W 18th	10211	W 17th		6-13-88
21+00	158.3	148.21	10.1			23+08.4 TAP		20978	10215	W 18th	10215	W 17th		3-21-88
						24+08.4 TAP		20299	10303	W 18th	10303	W 17th		10-27-88
						24+66.9 TAP		20802	10301	W 18th	10301	W 17th		6-6-88
23+00	159.1	148.83	10.3			25+10.9 TAP		92-4564-7	10311	W 18th	10311	W 17th		12-22-92
	159.70	148.94	10.8	0+00 L-7 23+37.4		26+20.4 TAP		93-773-7 19328	10315	W 18th	10315	W 17th		1-19-93
24+00	159.5	149.12	10.4			27+42.4 TAP		21390	10315	W 18th	10315	W 17th		10-15-87
						28+92.3 TAP		20309	1823	Denene				8-29-88
26+00	161.4	149.70	11.7			29+32.3 TAP		20337	1831	Denene				3-21-88
	163.19	149.85 OUT 149.97 IN	13.3	26+52.4		30+01.3 TAP		2-391	1833	Denene				3-23-88
27+00	162.5	150.11	12.4			30+83.2 TAP		8877-7	1839	Denene				2-18-92
						31+53.1 TAP		31-3277-7	1843	Denene				10-1-91
28+00	162.3	150.40	11.9			32+14.2 TAP		31-3101-7	1847	Denene				8-28-91
						32+65.2 TAP		25398	1851	Denene				5-21-90
29+00	162.5	150.70	11.8			4" SUR 35 0+27.0 TAP		91-2228-7	1852	Denene				5-17-91
	163.21	150.88 OUT 150.90 IN	12.3	29+61.3		4" SUR 35 0+27.0 TAP			1852	Denene				
30+00	163.0	151.01	12.0			4" SUR 35 0+27.0 TAP			1852	Denene				
31+00	163.2	151.31	11.9			4" SUR 35 0+27.0 TAP			1852	Denene				
						4" SUR 35 0+27.0 TAP			1852	Denene				
32+00	163.4	151.61	11.8			4" SUR 35 0+27.0 TAP			1852	Denene				
	163.68	151.80	11.9	32+65.2	4" stub NE				1852	Denene				
0+00	156.63	146.32	10.3	0+00					1852	Denene				
1+00	157.00	146.63	10.4	1+02.5	4" stub NE				1852	Denene				

LINE 2

CONT ON J-294
Form #192-020 (July, 1981)

Proposal Add 9719 W 18th lot 27 BK of Stonegate add - Permit # 23607 7/6/89 (Ran 16' 4" PVC 40' FROM Main N. for future sewer for proposed 9719. Made TAP 25' & 4" MH 7+32.4 and capped LINE)

* 24434 12-6-89 9902 W 17th - address shows incorrectly. GPO SCA PERMIT # 9906. THIS ERROR COLLECTED ON OUR RECORDS 4/23/95