

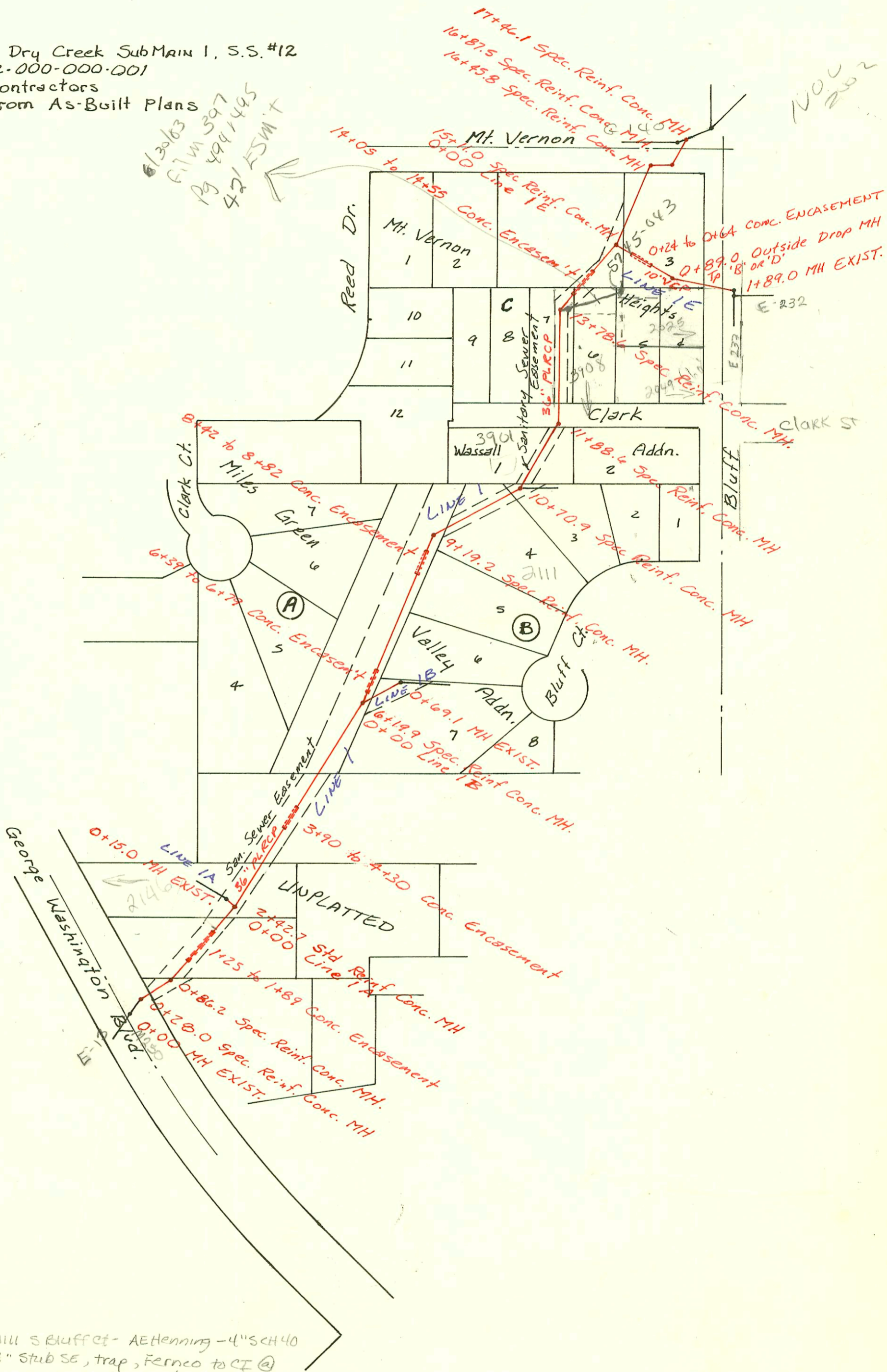
Sewer to Supplement Dry Creek SubMain 1, S.S. #12
468-80-990-80292-000-000-001
Built By Utility Contractors
Booked 8-11-87 from As-Built Plans

13063
6.11 W 397
19 494/495
42' ESMIT

NOV 2002



PIN 10460



2001-01915-dab01-211 S Bluffct- AETHenning -4" SCH 40
Full Replacement 4" stub SE, trap, Fernco to CT @
house, 2H22, 3H45, 17W1W 00, BSmt drain

- 2002- 63135 11/20/02 2049 S. Bluff - McClung's - 4" sch 40 PVC tied to
wye on 6" city line at approx 8' S of 5745-09300
- 2002- 03136 11/20/02 2049 S. Bluff (tied to line for 2025 S. Bluff) McClung
sealed w/ concrete 2' S. of NPL and 10' E of WPL

