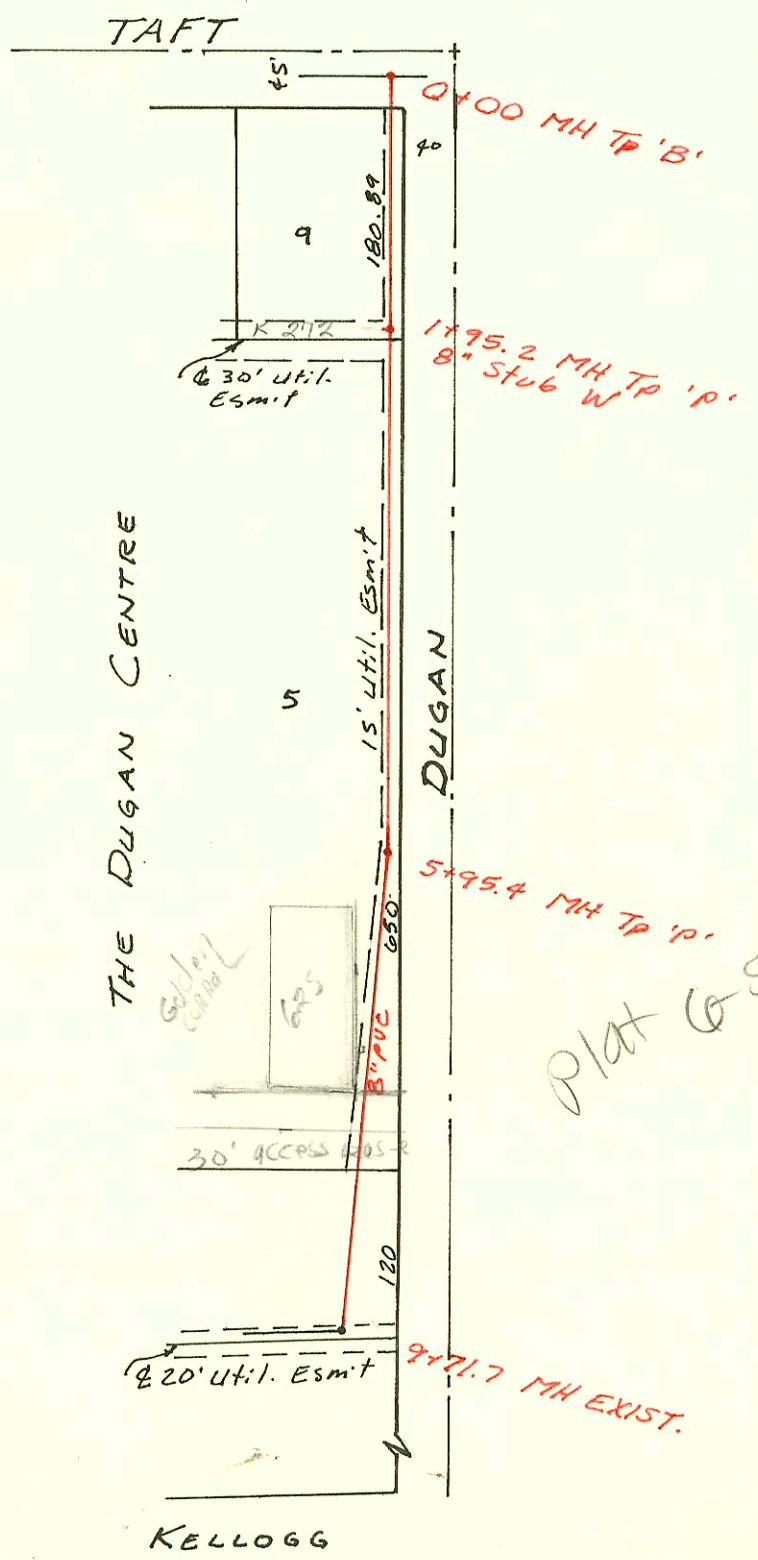


Sewer to Supplement Dry Creek SubMain 1 S.S. #120
 468-80-990-80292-000-000-001
 Built By Utility Contractors
 Booked 8-11-87 from AS-Built Plans



Sanitary Sewer Relocation in conn/with SWS # 315
 468-76-245-81589-000-000-001
 Built By Wildcat Const.
 Booked 8-26-87 from JPCS-III

Plot 6-SS

CONSTRUCTION RECORD						SERVICE RECORD						
STATION	ELEVATION		Depth	MANHOLE	4-INCH "Y" BRANCHES		No. of Permit		House Number		DATE OF PERMITS	
	Ground	Grade			North West	South East	North West	South East	North West	South East	North West	South East
Sewer to Line 2 Supplement Dry Creek Sub-Main 1, SS # 12												
0+00.5	114.3	102.50	11.8	0+00.5								
1+00	115.0	102.66	12.3									
	114.5	102.76 out 102.86 16" in 103-36 18" in	11.7	1+66.8								
2+00	105.8											
2+45		85.67 Fl 16"										
3+00	90.5											
3+45		85.50 Fl 18"										
4+00	112.5	104.33 out 104.43 in	11.6	4+43.8								
5+00	115.6	104.52	11.1									
	115.5	104.55 out 104.65 in	11.0	5+20.3								
6+00	115.5	104.78	10.7									
7+00	115.5	104.94	10.6									
8+00	115.5	105.10	10.4									
	115.3	105.13	10.2	8+20.3								
9+00	114.5	105.26	9.2									
10+00	114.4	105.42	9.0									
11+00	115.5	105.58	9.9									
	115.5	105.61	9.9	11+20.3								
12+00	116.0	105.71	10.3									
13+00	116.8	105.85	11.0									
	119.8	105.96	13.8	13+86.6								
14+00	120.0	105.98	14.0									
	121.44	106.10	15.3	EXIST. 14+98.8								
S.S. Relocation in cona/with SWS # 315												
0+00	118.87	109.47	9.4	0+00								
1+00	119.2	109.79	9.4									
	118.84	110.10	8.7	1+95.2	8" stub w							
2+00	118.8	110.12	8.7									
3+00	119.5	110.43	9.1									
4+00	120.0	110.74	9.3									
5+00	119.3	111.06	8.2									
	119.45	111.36	8.1	5+95.4								
6+00	119.5	111.37	8.1									
7+00	120.3	111.65	8.7									
8+00	120.0	111.93	8.1									
9+00	122.0	112.20	9.8									
	122.22	112.40	9.8	9+71.7								