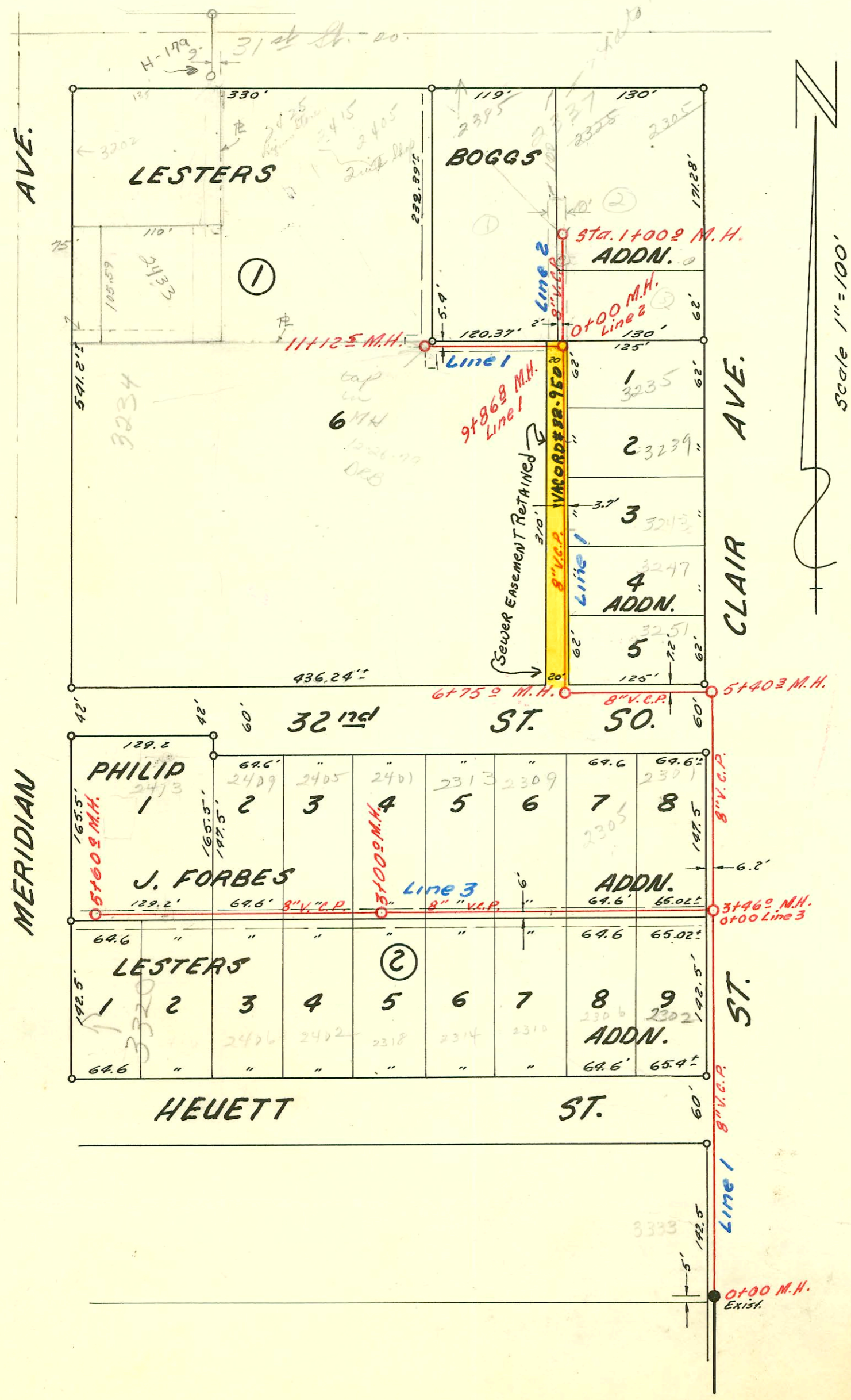


S.S. to serve Lot 4, Blk 1,  
 Vickridge First Addn.  
 1182 PPS  
 Built By Utility Contr.  
 Per As Built Plan

Continued From Page 1  
 LAT 2 SUB. 9 W 15 LINE 1 A  
 W. B. CARTER CONSTRUCTION CO. 3-15-62  
 BOOK K-71 PROJ. NO C21-20 BOOKED 4-26-62



LATERAL 38, SUB. 2, SAN. SEWER 22  
 W. B. CARTER, CONSTRUCTION CO. 5-3-62  
 BOOK K69A - PROJ. NO. C20-95 - BOOKED 5-7-62

CONSTRUCTION RECORD

SERVICE RECORD

STATION	ELEVATION		Depth	MANHOLE	4-INCH "Y" BRANCHES		No. of Permit		House Number		DATE OF PERMITS	
	Ground	Grade			North-West	South-East	North-West	South-East	North-West	South-East	North-West	South-East
Line 1A 0+00	161.3	154.10		Exist. M.H. 0+450.0	0+255							
1+00	160.2	154.30		1+315	1+230		2001-01633	8200 Killarney			7-6-01	
	159.2	154.39		1+50 End								
Line #1 0+00	95.2	89.50	5.7	Exist. 0+00	East	West						
1+00	95.5	89.70	5.8			0+91	C19291	3333 S. St. Clair			5-22-70	
2+00	95.7	89.90	5.8									
3+00	95.8	90.10	5.7									
	95.8	90.19	5.6	3+460								
4+00	95.9	90.30	5.6									
5+00	95.3	90.50	4.8									
	96.0	out 90.58 in 90.68	5.4	5+40								
6+00	96.2	90.80	5.4		6+08		C26683	3251 S. St. Clair			8-19-71	
	96.3	out 90.95 in 91.05	5.3	6+75								
					6+89	6+91						
7+00	96.3	91.10	5.2									
					7+52	7+54	C30744	3247 S. St. Clair			3-3-72	
8+00	95.8	91.30	4.5									
					8+16	8+18	C28564	3243 S. St. Clair			10-14-71	
					8+76	8+78	C16632	3239 S. St. Clair			11-7-69	
9+00	95.8	91.50	4.3									
					9+39	9+41	C15969	3235 S. St. Clair			3-19-71	
	95.9	out 91.67 in 91.77	4.2	9+86								
10+00	96.0	91.80	4.2				13865	2375 W. 31st St.			5-29-85	
11+00	96.4	92.00	4.4		10+95	11+02	13886	2385 W. 31st St.			5-29-85	
					11+12		C1666	245-15-25			1-24-67	
	96.4	92.03	4.4	11+12			C75122	3234 Meridian			10-31-79	
Line #2 0+00	95.9	91.80	4.1	Exist. 0+00	East	West						
					0+23	0+25						
					0+82	0+84						
					0+86	0+88						
1+00	96.0	92.20	3.8				C22586	2337 W. 31st St.			5-29-85	
	96.0	92.20	3.8	1+002			14096	2337 W. 31st St.			6-21-85	
							270526	2337 W. 31st St.			3-8-79	
							15538	2337 W. 31st St.			5-7-62	
Line #3 0+00	95.8	91.90	3.9	Exist. 0+00	North	South						
					0+18	0+20	15775	2301 W. 32nd St.	2302 Hewett		6-15-62	5-21-70
					0+83	0+85	15776	2305 W. 32nd St.	2306 Hewett		6-15-62	11-3-70
1+00	96.0	92.10	3.9									
					1+46	1+48	15777	2309 W. 32nd St.	2310 Hewett		6-15-62	12-1-70
2+00	95.8	92.30	3.5		2+15	2+17	C2206	2313 W. 32nd St.	2314 Hewett		7-22-70	
					2+82	2+84	C19110	2317 W. 32nd St.	2318 Hewett		5-5-70	11-20-70
3+00	95.9	92.50	3.4	3+00			C19111	2401 W. 32nd St.	2402 Hewett		5-5-70	12-1-70
					3+46	3+48	C19112	2405 W. 32nd St.	2406 Hewett		5-5-70	12-1-70
4+00	96.0	92.70	3.3		4+04	4+06	C75215	2406 Hewett			11-6-79	
					4+70	4+72						
5+00	96.2	92.90	3.3		5+44	5+46	C67722	2307 Meridian			8-8-78	
	96.4	93.02	3.4	5+60								
#90 14155												
#70 14156												

LINES

3320 S. Meridian - 6-23-65 Schmale Play Co (top 59.7' E of MH)  
 8200 E Killarney - exist serv. line (initially installed under permit SWR 2001 01633  
 was reconnected to 4" wye on Co. Riser assembly by utility contr under  
 1182 PPS when portion of main abandoned