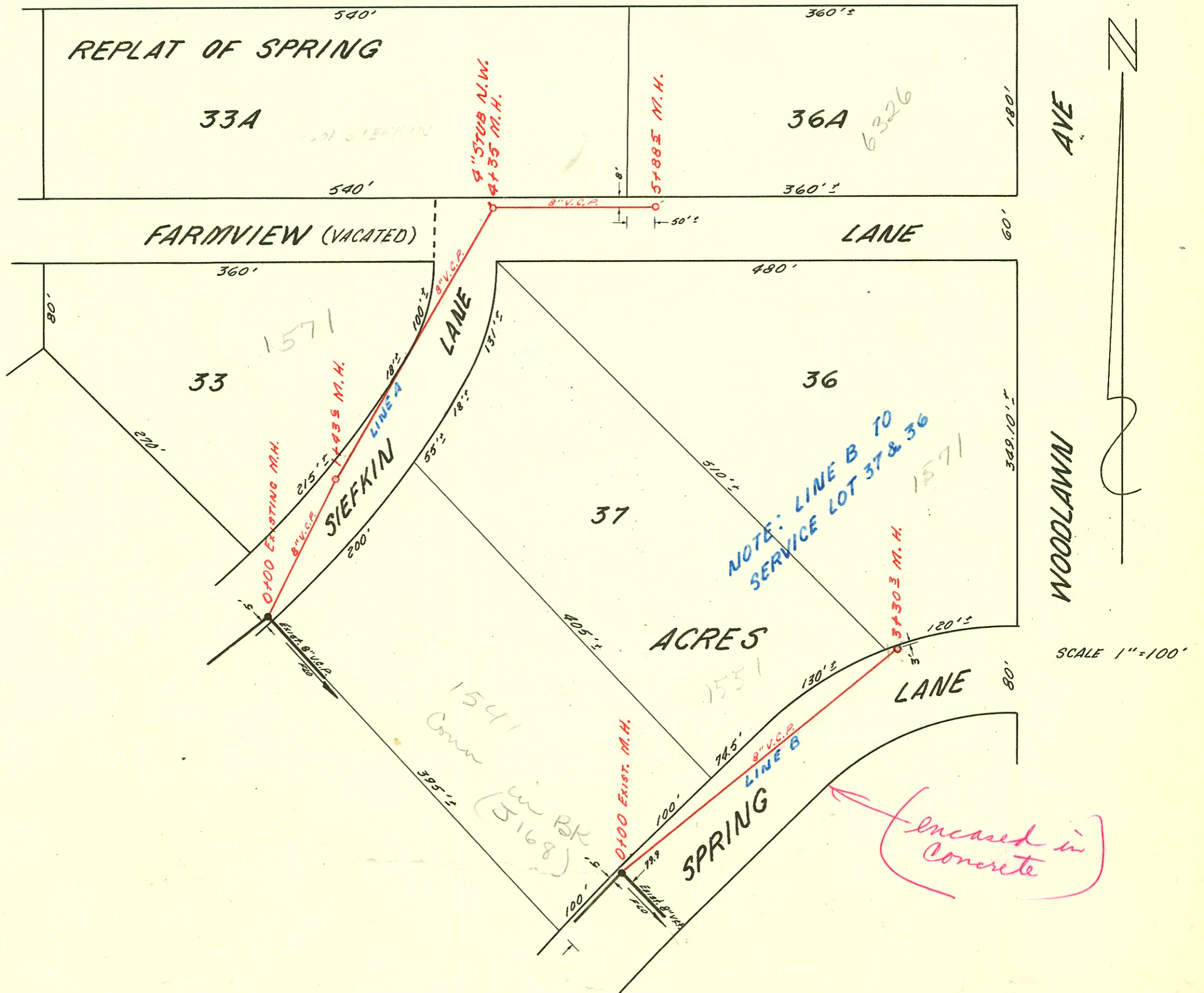


Scale 1"=100'

LAT. 19 - SUB. 5A - W.I.S.  
 UTILITY CONTRACTORS, INC. 5-16-1962  
 BOOK K-73 PROJ. NO. C20-38 BOOKED 5-22-1962



LAT. 84 DRY CREEK S. #2 - S.S.12  
 W. B. CARTER CONSTRUCTION, CO. 6-13-62  
 BOOK K71 - PROJ. NO. C22-8 - BOOKED 6-26-62

CONSTRUCTION RECORD

SERVICE RECORD

STATION	ELEVATION		Depth	MANHOLE	4-INCH "Y" BRANCHES		No. of Permit		House Number		DATE OF PERMITS	
	Ground	Grade			North West	South East	North West	South East	North West	South East	North West	South East
0+00	176.2	168.40	7.8	Existing 0+00	Exist. stub N.							
1+00	176.7	168.80	7.9		0+74 <sup>±</sup> 0+76 <sup>±</sup>			15719	305 N. Armour			6-6-62
					1+12 <sup>±</sup>			B1445	310 Stratford	311 N. Armour		4-6-64
2+00	177.3	169.20	8.1		1+61 <sup>±</sup>			B2746				1-26-65
					2+27 <sup>±</sup>			17480	316 Stratford			8-6-63
					2+39 <sup>±</sup>							
					2+65 <sup>±</sup>							
3+00	178.3 178.4	169.52 169.60	8.8 8.8	2+80 <sup>-</sup>								
					3+12 <sup>±</sup>			15720	329 N. Armour			6-6-62
					3+80 <sup>±</sup>			B859	332 Stratford	337 N. Armour		2-13-64
					3+91 <sup>±</sup>			16834				3-25-63
4+00	179.5	170.00	9.5		4+19 <sup>±</sup>							
					4+71 <sup>±</sup>			C18758		345 N. Armour		4-10-70
5+00	180.0	170.40	9.6		5+53 <sup>±</sup>			#17381 15422		303 N. Armour		10-1-86 white 33.02
					5+63 <sup>±</sup>							
6+00	179.9 180.2	170.64 170.80	9.3 9.4		6+38 <sup>±</sup>			15877		411 N. Armour		7-11-62
7+00	180.6	171.20	9.4		7+15 <sup>±</sup> 7+78 <sup>±</sup>			16272		419 N. Armour		10-19-62
8+00	180.8	171.60	9.2		8+05 <sup>±</sup>			257, 297 15878		427 N. Armour		11-4-62 7-11-62
					8+44 <sup>±</sup>							
9+00	181.5	172.00	9.5		8+86 <sup>±</sup> 8+84 <sup>±</sup>			B5756		435 N. Armour		6-3-66
					9+65 <sup>±</sup>			#16776		443 N. Armour		3-1-63
					9+92 <sup>±</sup>							
10+00	181.9	172.40	9.5		10+49 <sup>±</sup>							
11+00	182.2 182.2	172.80 172.80	9.4 9.4	11+04 <sup>±</sup>	End 8" V.C.P.							
<b>LINE A</b>												
0+00	220.08	208.95	11.1	Exist. 0+00								
1+00	220.10 220.7	209.15 out. 209.24 in 209.34	10.9 11.4 11.3	1+43 <sup>±</sup>								
2+00	220.2	209.45	10.7		1+57 <sup>±</sup> 2+64 <sup>±</sup>			#B812	1571 Kroff			2-7-64
3+00	219.8	209.65	10.1									
4+00	219.7 219.5	209.85 out. 209.92 in 210.02	9.8 9.6 9.5	4+35 <sup>±</sup>	4" STUB N.W.			#15319	1501 SIFPAC			6-26-62
5+00	218.4	210.15	8.2		5+82 <sup>±</sup>			C9878	6326 Farmhouse			7-31-68
					216.9 210.33 6.6 5+88 <sup>±</sup>							
<b>LINE B</b>												
0+00	214.6	207.34	7.3	Exist. 0+00								
1+00	213.7	207.54	6.2		1+97 <sup>±</sup> 2+51.3							
2+00	211.7	207.74	4.0					C1547	1551 Springlane			1-13-67
3+00	210.1	207.94	2.2		3+26 <sup>±</sup>			#B4963	1571 Springlane			1-18-66
					210.2 208.00 2.2 3+30 <sup>±</sup>							
14573 - 7015 E Central - 8-22-85 Jess McCallough - Cond. Permit												

202208 #B-309-451 Armour - Kennelippold - 11-18-63 - top (10+44)  
 #B754-324 Stratford - Reynolds - 1-29-64 - top (3+16.1)  
 #B1216-340 Stratford - Leason, Inc. 5-8-64 - top - (5+00.2)  
 #C4013 - 7101 E. Central (near village hall) from 8" line into 4" west - 7-19-67 (co. of 9+44 m.h.) w.B. Center  
 Top #C4014 - 7101 E. Central from 6" private line north of 5+63.2 m.h. - 7-19-67 w.B. Center (78" No. of 5+63.2 m.h.)