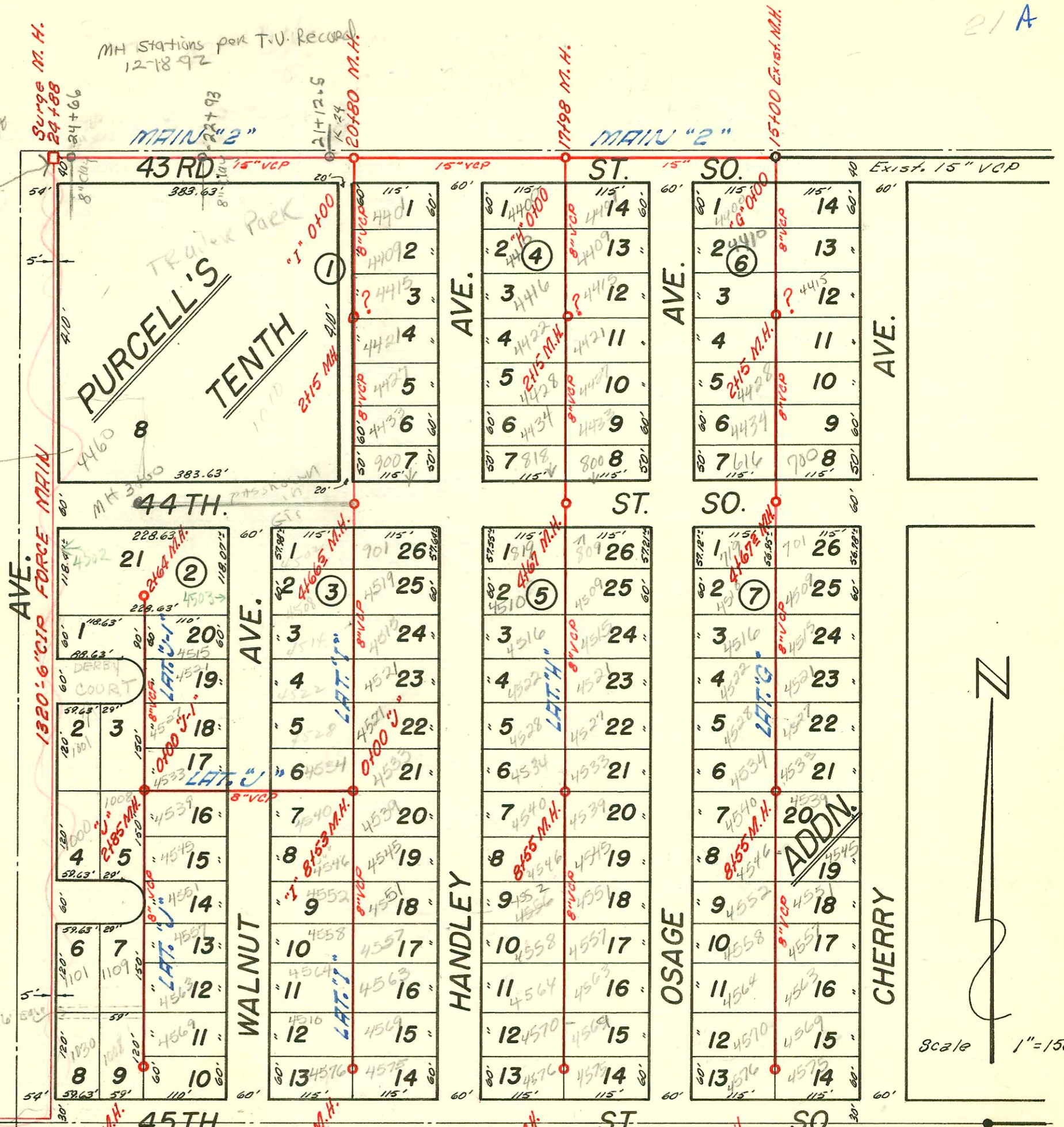


MH Stations per T.U. Record
12-18-92

4460 S. Seneca
Sub 22000-00309
dated 2/5/2005
Be
donat 40' No of MH
3100

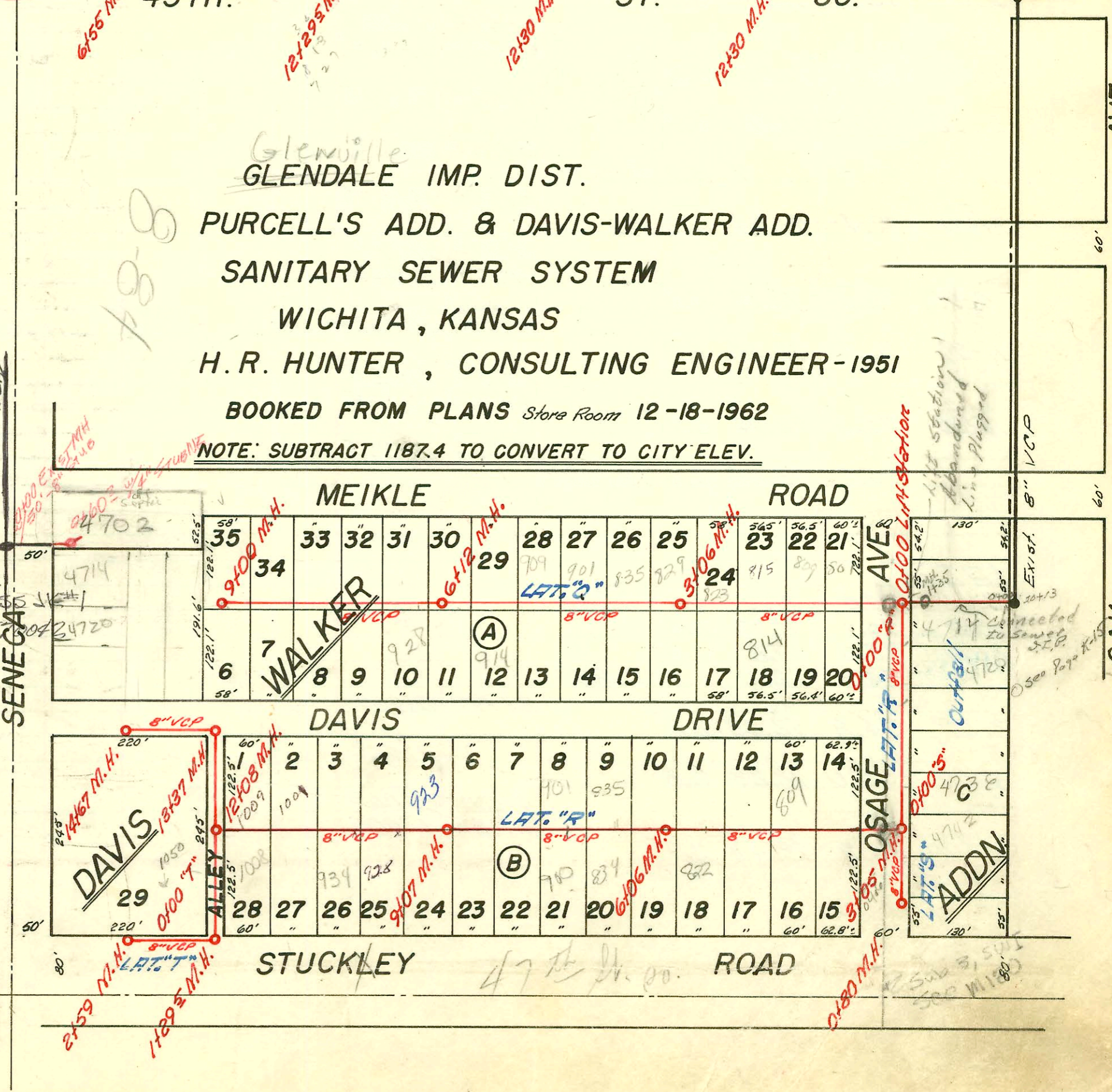


Glenville
GLENDALE IMP. DIST.
 PURCELL'S ADD. & DAVIS-WALKER ADD.
 SANITARY SEWER SYSTEM
 WICHITA, KANSAS
 H. R. HUNTER, CONSULTING ENGINEER-1951

BOOKED FROM PLANS Store Room 12-18-1962
 NOTE: SUBTRACT 1187.4 TO CONVERT TO CITY ELEV.

LAT 7, Sub 3, S.W.I.T.
 BUILT BY W.B. CARTER
 BOOKED 15 MARCH 1972 FROM
 PROJ No 17805

2005-02837-4428 S Handley
 11-19-05 install cp



Scale 1"=150'



CONSTRUCTION RECORD						SERVICE RECORD						
STATION	ELEVATION		Depth	MANHOLE	4-INCH "Y" BRANCHES		No. of Permit		House Number		DATE OF PERMITS	
	Ground	Grade			North West	South East	North West	South East	North West	South East	North West	South East
LAT. "H" Continued												
8+00	76.3	72.50	3.8		7+60°	7+57°						
	77.3	72.62	4.6	8+55°	8+19°	8+16°						
9+00	78.0	72.70	5.3		8+83°	8+80°						
					9+43°	9+40°						
10+00	77.7	72.90	4.8		9+98°	9+95°						
11+00	77.4	73.10	4.3		10+40°	10+37°						
					11+15°	11+12°						
12+00	78.0	73.30	4.7		11+74°	11+71°						
	77.7	73.37	4.3	12+30°	12+25°	12+22°						
LAT. "I"												
0+00	77.0	out 69.88 in 70.28	7.1 6.7	Exist 0+00°								
1+00	76.1	70.43	5.7		0+47°	0+44°						
					1+07°	1+04°						
					1+63°	1+60°	2050- 2045		4514 Ref Walnut	see next pg	2-17-00	
2+00	76.0	70.58	5.4		2+27°	2+24°						
					2+82°	2+79°						
3+00	76.4	70.73	5.7		3+47°	3+44°						
					4+00°	3+97°						
4+00	76.5	70.88	5.6									
	76.3	70.98	5.3	4+65°								
5+00	76.2	71.03	5.2		5+37°	5+34°						
					5+84°	5+81°	(Repair) 2267		4508 Walnut		2-18-65	
6+00	76.2	71.18	5.0		6+41°	6+38°						
					6+97°	6+94°						
7+00	76.5	71.33	5.2		7+52°	7+49°						
8+00	77.4	71.48	5.9		8+15°	8+12°						
	77.5	71.57	5.9	8+53°	8+70°	8+67°						
9+00	77.4	71.74	5.7		9+30°	9+27°						
					9+97°	9+94°						
10+00	76.5	72.14	4.4		4" PVC 40	10+55°	10+52°	962207	4558 R Walnut		2-27-96	
11+00	76.5	72.54	4.0		11+15°	11+12°						
					11+75°	11+72°						
12+00	75.6	72.94	2.7		12+23°	12+20°						
	75.7	73.08	2.6	12+29°								
LAT. "J"												
0+00	77.5	71.57	5.9	Exist 0+00°								
1+00	75.1	71.72	3.4									
2+00	75.3	71.87	3.4									
	74.8	72.0	2.8	2+85°	2+99°	2+96°						
3+00	74.8	72.03	2.8			3+52°						
4+00	75.0	72.23	2.8		4+09°	4+06°						
					4+73°	4+70°						
5+00	75.3	72.43	2.9									

Note: Not shown on profile plan 2+15°?

SWR2007-01476-4570 S Walnut - install c/o

K

<i>priv. line trailer conn.</i>	B 3002	- John M. Powers - 1010 W. 44th St	4-2-65
	B 3003	✓	✓
	B 3004	✓	✓
	B 3005	✓	✓
	B 3006	✓	✓
	B 3007	✓	✓
	B 3008	✓	✓
	B 3009	✓	✓
	B 3010	✓	✓
	B 3011	✓	✓

B 3429 1010 W. 44th St. Co. John M. Powers, 5-18-65
 B 3430
 B 3431
 B 3432
 B 3433
 B 3434
 B 3435
 B 3436
 B 3437
 B 3438

priv. line trailer conn.

2241 1010 W. 44th St So. 12-31-60 Francis Long

SWR1999-00070 ^{S10} 4460 S. Seneca -

SWR2000-00445- 4514 S Walnut St - 2/17/00 - AE Henning - 4" uye - Replaced entire line - 23' S of WPL (1+63.5)

SWR2000-02580- 4551 S Walnut St - 1/27/00 - Roop - 4" SCH40 (mtt buried) 5' 6" S of WPL Donut
 ITWIN CO, 1/14/5

K