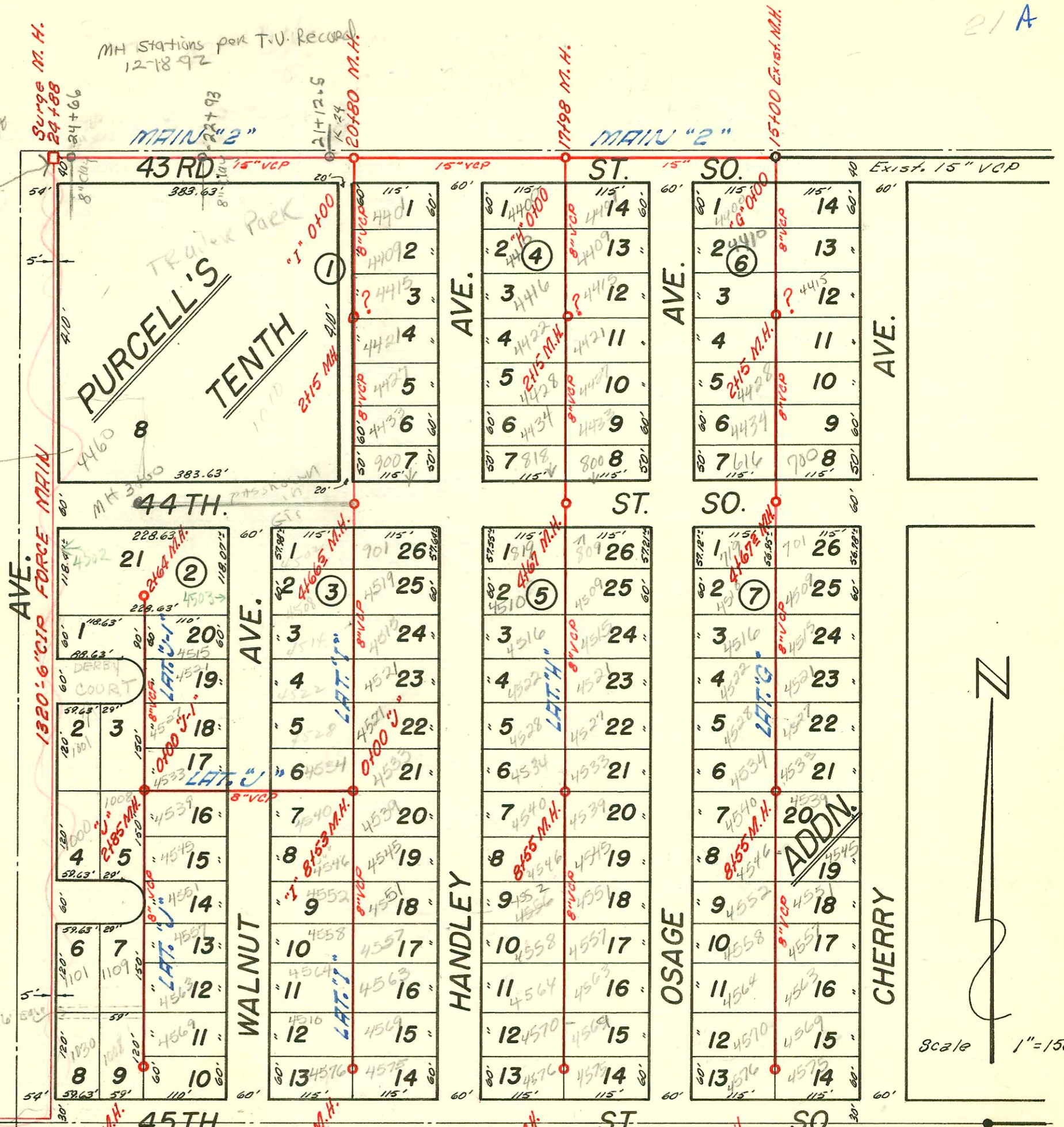


MH Stations per T.V. Record
12-18-92

4460 S. Seneca
Sub 22000-00309
dated 2/5/2005
Be
donat 40' No of MH
3100

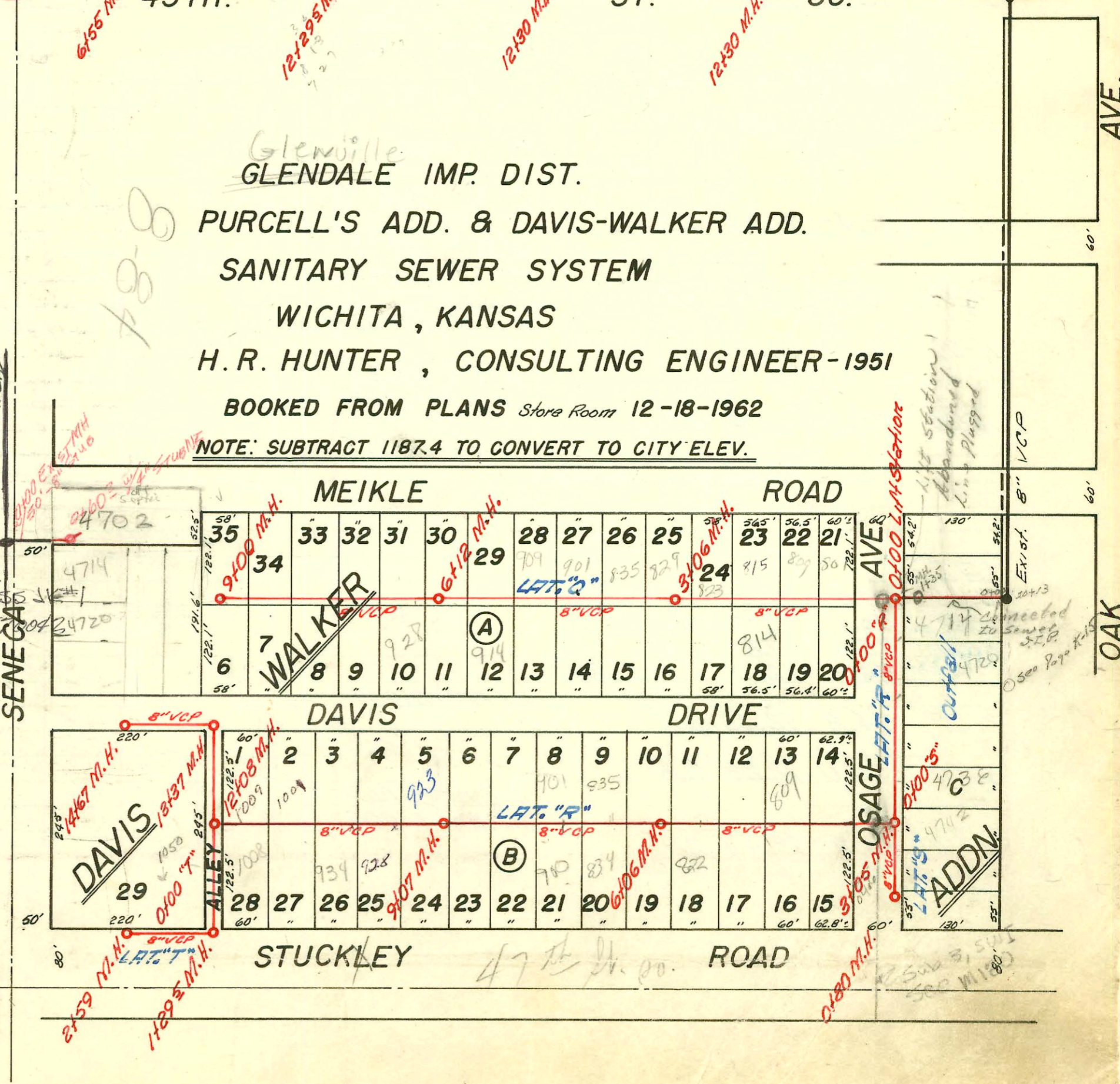


Glenville
GLENDALE IMP. DIST.
 PURCELL'S ADD. & DAVIS-WALKER ADD.
 SANITARY SEWER SYSTEM
 WICHITA, KANSAS
 H. R. HUNTER, CONSULTING ENGINEER-1951
 BOOKED FROM PLANS Store Room 12-18-1962

NOTE: SUBTRACT 1187.4 TO CONVERT TO CITY ELEV.

LAT 7, Sub 3, SUIIT
BUILT BY W.B. CARTER
BOOKED 15 MARCH 72 FROM
PROJ No 17805

2005-02837-4428 S Handley
11-19-05 install cp



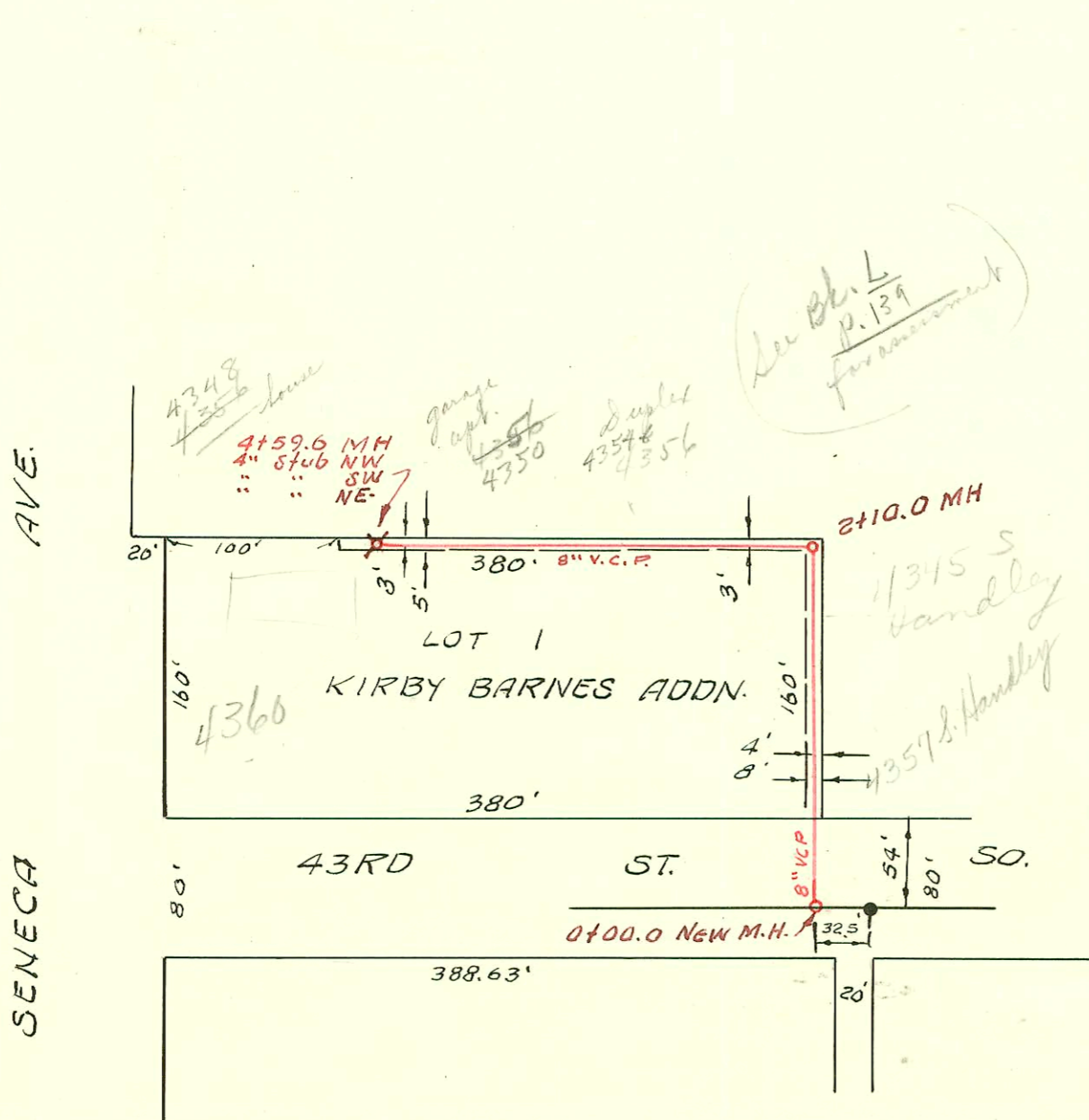
Scale 1"=150'



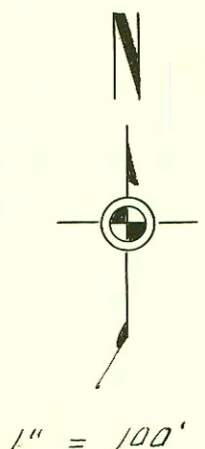
*1999-01547-824 W. 47th St. S- LUBBERS EXC - REPLACED ENTIRE LINE 1/10/00

2000-00044-1/10/00- 1008 W 47th St S- Sam Bangle- 4" SCH 40- Replaced all but lower 2' - No Alley-

K



See Bl. L
P. 139
for information



KIRBY BARNES ADDN. S. S.
UTILITY CONT. INC.
PRIVATE CONTRACT, BK. D.K #3
3-16-67