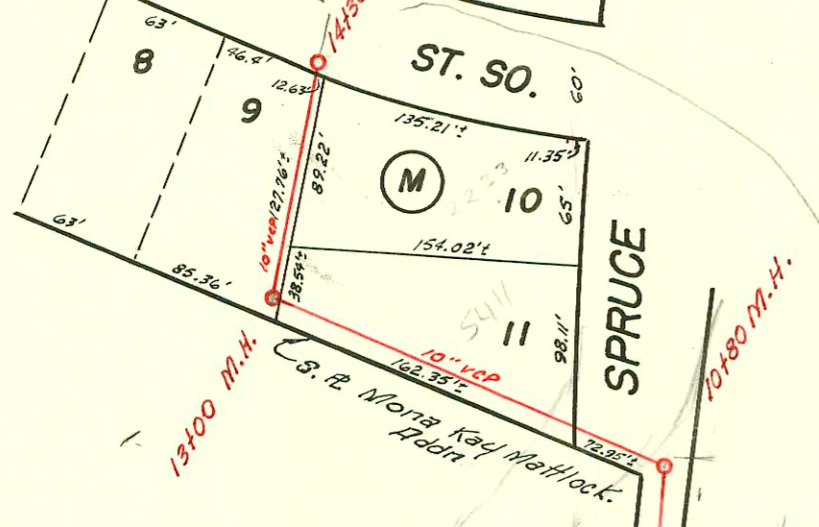


MONA KAY MATLOCK  
53 RD. ST. SO. AVE.



Given oaks Mobily Hemlock  
Common address of  
1904 to 5445

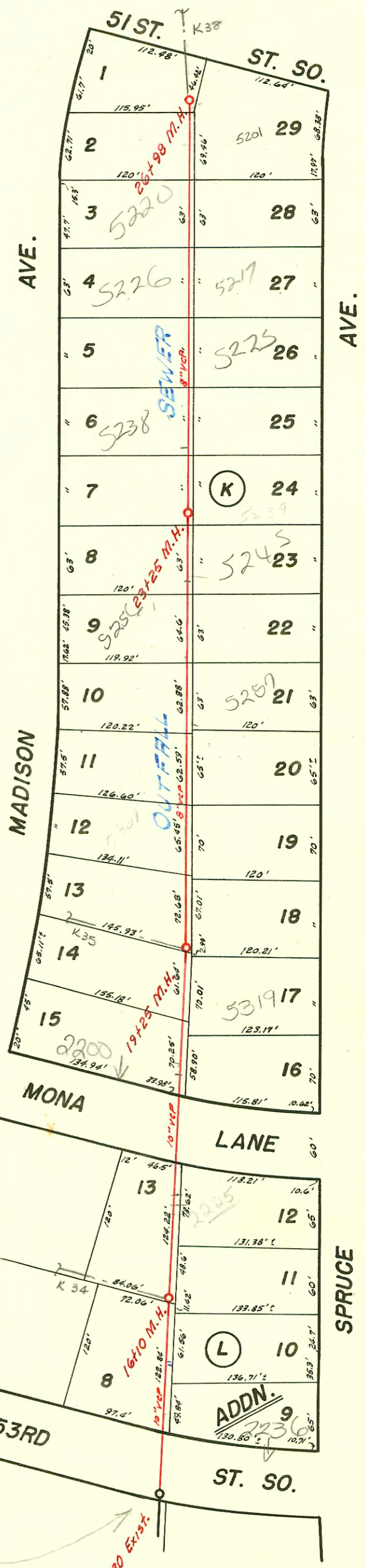
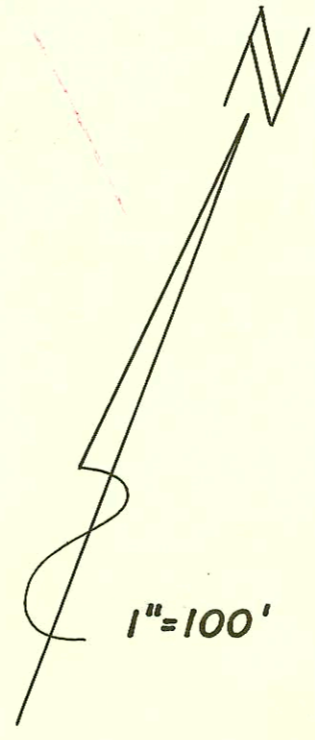
SPRUCE ST

5432  
5440  
5446  
5450  
5456  
5460

20' Impress Egress Rd.  
Wichita & Valley Center Riverside Levee  
West Right of Way

Line Not in Street  
in Rear

SCALE 1"=100'



**SANITARY SEWER SYSTEM  
JAYHAWK IMPROVEMENT DISTRICT  
SEDGWICK COUNTY, KANSAS**

FLOYD B. DEVLIN: CONSULTING ENGINEER  
WICHITA, KANSAS 1955  
BOOKED FROM PLANS - JAN. 1963

