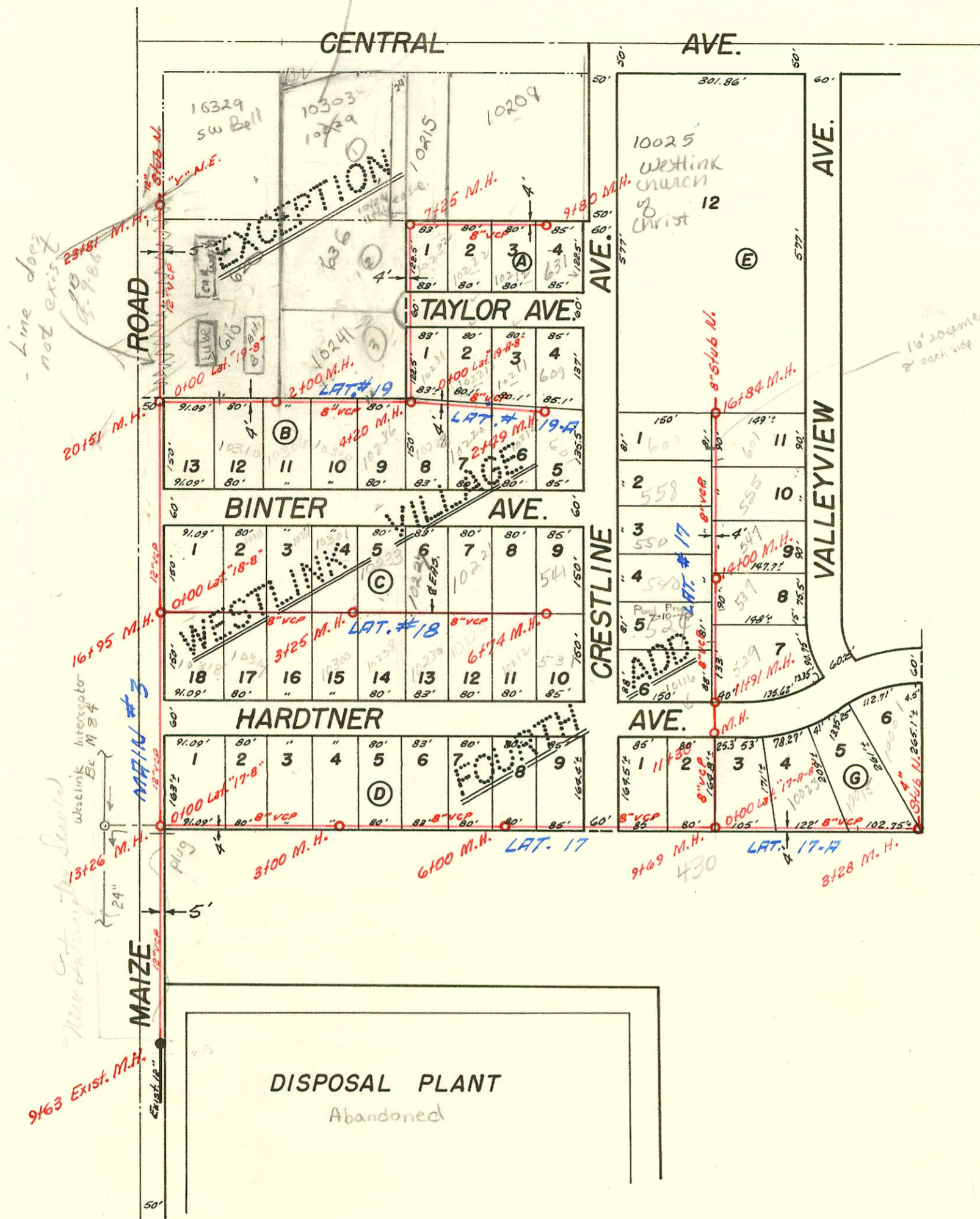


check with Vally about main fee

10303 w central
Main EXT. Reg'd
for new Bldg - Also
for in lieu of main
BSR
12/1/03



SANITARY SEWER SYSTEM

WESTLINK VILLAGE (IMP. DIST.)

SEDGWICK COUNTY, KANSAS

K.O. TAYLOR — CONSULTING ENGR. — 1955

BOOKED JAN. 1963 FROM PLANS

NOTE: SEA LEVEL ELEVATIONS

