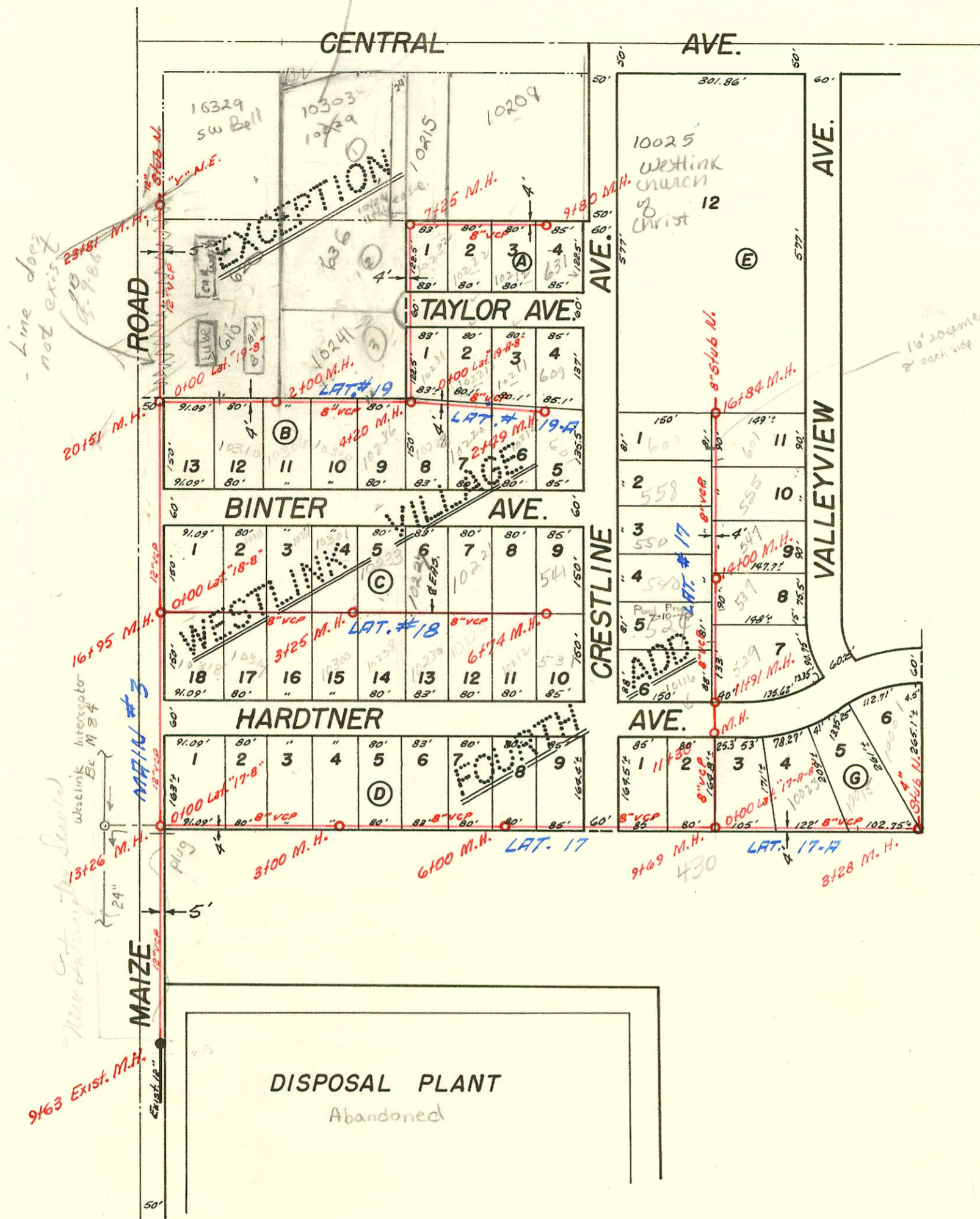


check with Vally about main fee

10303 w central
Main EXT. Reg'd
for new Bldg - Also
for in lieu of main
BSR
12/1/03



SANITARY SEWER SYSTEM

WESTLINK VILLAGE (IMP. DIST.)

SEDGWICK COUNTY, KANSAS

K.O. TAYLOR — CONSULTING ENGR. — 1955

BOOKED JAN. 1963 FROM PLANS

NOTE: SEA LEVEL ELEVATIONS

CONSTRUCTION RECORD

SERVICE RECORD

STATION	ELEVATION		Depth	MANHOLE	4-INCH "Y" BRANCHES		No. of Permit		House Number		DATE OF PERMITS	
	Ground	Grade			North West	South East	North West	South East	North West	South East	North West	South East
LAT # 17-A												
0+00	1328.0	1317.88	10.1	Exist. 0+00 ²								
1+00	30.0	20.88	9.1		0+16 ²							
2+00	35.8	23.88	11.9		1+18 ²		23221-7 17086		100231 Hardtner		10-28-93 5-9-63	
3+00	38.0 40.0	26.88 1327.72	11.1 12.3	3+28 ²	2+42 ²				10001 B Hardtner		7-25-88	
LAT. # 18												
0+00	1322.0	1314.81	7.2	Exist. 0+00 ²	0+18 ²	0+20 ²			10317 N. Binter	10318 Hardtner	8-11-65	1-20-67
1+00	21.0	15.21	5.8		1+08 ²	1+10 ²	25580 83640	C1614	10311 R Binter	10314 Hardtner	6-1-2-21 6-22-65	1-20-67
2+00	21.5	15.61	5.9	8 dup	1+87 ²	1+89 ²	83639		10307 Binter		6-22-65	
3+00	23.0	16.01	7.0		2+66 ²	2+68 ²	B5409		10321 Binter		4-7-66	
4+00	24.8	17.61	7.2		3+49 ²	3+51 ²	B2887	26923-7	10233 Binter	10238 Hardtner	2-25-65	7-12-91
5+00	27.5	19.61	7.9		4+28 ²	4+30 ²	B1080		10227 Binter	10230 Hardtner	3-26-64	
6+00	33.8	21.61	12.2		5+11 ²	5+13 ²			10215 Binter		10-13-64	
	32.5	1323.09	9.4	6+74 ²	5+91 ²	5+93 ²	B2130	C58562	10212 Hardtner	531 Binter	11-9-76	3-30-65
LAT. # 19												
0+00	1324.0	1319.00	5.0	Exist. 0+00 ²								
1+00	27.0	21.20	5.8		4" SDR 35 1+05.0	0+20 ²	B-5123		10316 Binter		2-23-66	
2+00	1337.0	1323.40	13.6	2+00 ²		1+10 ² 1+92 ²	96-1846-7 98389-7	C1613 B4867	610+620 N Main Rd 610 6th 112c B	10310 Binter	see below 2-16-96	1-20-67 1-3-66
3+00	39.5	25.60	13.9			2+70 ²		C2105	10300 Binter		3-2-67	
4+00	37.0	27.80	9.2		3+57.0 ^{dup}	3+52 ²	C76206	B5347	10241 Taylor	10236 Binter	1-18-80	3-28-66
5+00	39.2	28.56	10.6			4+20 ²						
6+00	40.0	28.96	11.0		NO INSP. TURNED IN		22200		(10242 w Taylor) 636 N Main Rd		12-14-88	
7+00	40.8	29.36	11.4		510 85' NW 1/4 NH MH TAP NW	7+25 ²	95200427 C44418		10243 w Central Binter	10244 Binter	12-7-95 4-12-94	
8+00	40.5	29.76	10.7		7+96.4 Tap	7+33 ² 7+75.0	C13756	20291 C5132	10211-10212 w Central Binter	10232R Taylor	4-25-69	3-16-88 10-17-67
9+00	39.5	30.16	9.3			8+18 ² 9+00 ²						
	1337.0	1330.48	6.5	9+80 ²	9+12 ²	9+74 ²	B274 5532	#0912	1020 B w. Co. 609 10209 to Central Binter	631 Binter	7-14-90 10-15-63	4-2-82 2-24-64
LAT. 19-A												
0+00	1337.0	1328.24	8.8	Exist. 0+00 ²	0+12 ²	0+10 ²						
1+00	37.1	28.64	8.5		0+92 ²	0+90 ²		B3174	10227 Binter		3-30-65	
2+00	35.1	29.04	6.1		1+72 ²	1+70 ²						
	1334.0	1329.24	4.8	2+49 ²	2+43 ²	2+41 ²	B1447	B1754	609 Binter	3015 Binter	4-7-64	8-11-64

10-58536 - Wm. Long 11-1-76 (10212 Hardtner) (6+39)
 # 17161 - 10212 Taylor - Von White Alley - 5-27-63 - Tap 9+57 (New Conn - 10215 w. Central - Brannon - 9-14-78)
 # B-123 - 10222 Taylor - Von White Alley - 9-23-63 - Tap 8+55 # 91-37453-7/1/15/91 10015 W. Hurdner
 # B-114 - 10221 Binter - Von White Alley - 10-8-63 - Tap 5+12
 B-181 - 10211 Taylor - Von White Alley - 11-8-63 - Tap 2+06 96-35847 3-12-76 10303 w Central
 B182 - 10221 Taylor - Von White Alley - 4-2-64 Tap 1+32
 B2573 - 10212 Binter - Bradford Rd - 12-30-64 Tap (2+16.2)
 52594 - 10220 Binter - Bradford Rd - 12-31-64 Tap (1+23.8)
 # C5132 - 10212 Taylor - Harold Thompson - 10-4-67 Tap (0+55)
 610 + 620 N Main Rd tied together per approval of Plumbing Board

