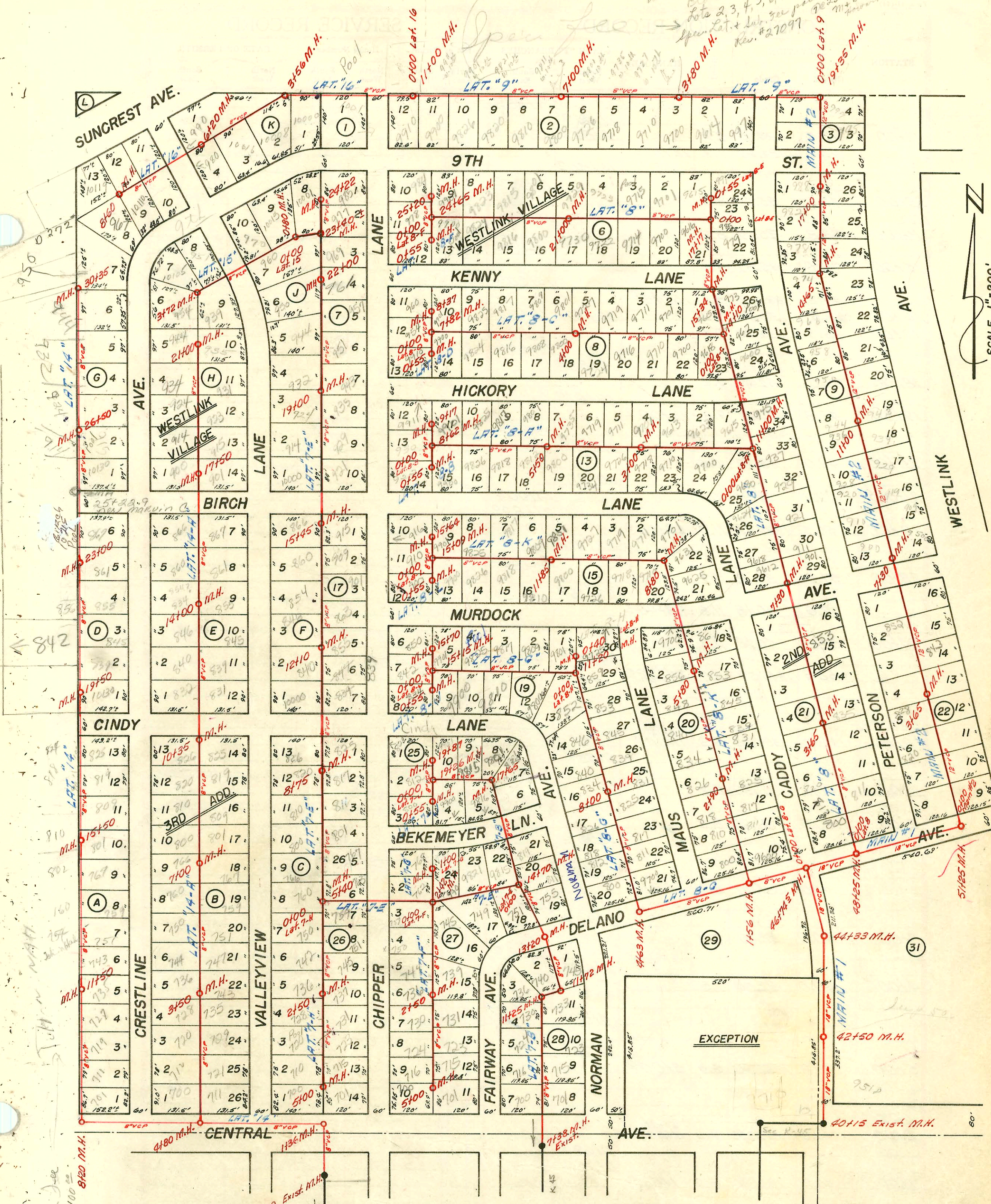


Western 9th Addition  
Block 10  
Lots 2, 3, 4, 5, 6, 7 & 8  
Spec. Fee + Sub. Fee paid \$1750.00  
M + B Construction Co.  
Forward Manager  
Rev. #27097



Special Fee  
for East side  
of Tah-n-hah

**SANITARY SEWER SYSTEM  
WESTLINK VILLAGE  
SEDGWICK COUNTY, KANSAS**

H. R. HUNTER CONSULTING ENGINEER  
WICHITA, KANSAS DATE: 3-7-55 (NOTE: SEA LEVEL ELEVATIONS)  
(BOOKED FROM PLANS JAN. 1963)

# 210159 424/9 90 in only - 17+72.0 top 4" SDK 35

CONSTRUCTION RECORD						SERVICE RECORD						
STATION	ELEVATION		Depth	MANHOLE	4-INCH "Y" BRANCHES		No. of Permit		House Number		DATE OF PERMITS	
	Ground	Grade			North West	South East	North West	South East	North West	South East	North West	South East
12+00	42.5	34.65	7.9		11+38 <sup>0</sup>							
	42.6	1334.69	7.9	12+10 <sup>0</sup>	11+44 <sup>0</sup>	11+67.1 <sup>0</sup>	1915	840 R	847	Chippewa	6-25-84	11-18-80
					12+03 <sup>0</sup>	12+00 <sup>0</sup>	11272	Chippewa				
					12+50 <sup>0</sup>							
13+00	43.3	35.09	8.2		12+95 <sup>0</sup>							
					13+09.0		C76045		863	Chippewa Lane		1-9-80
					13+70 <sup>0</sup>							
14+00	43.8	35.49	8.3		14+40 <sup>0</sup>							
					14+40 <sup>0</sup>		C62648		907 R	Chippewa		8-19-77
15+00	44.0	35.89	8.1		15+15	15+20 <sup>0</sup>			915 R	Chippewa		11-10-93
	44.2	1336.12	8.1	15+45 <sup>0</sup>			93-271807					
16+00	44.3	36.40	7.9		16+87 <sup>0</sup>	16+89 <sup>0</sup>						
17+00	46.3	36.90	9.4		17+53 <sup>0</sup>	17+65 <sup>0</sup>			929	W. Chippewa		7-13-89
					17+86 <sup>0</sup>		23534					
18+00	47.0	37.40	9.6		18+81 <sup>0</sup>							
19+00	47.8	1337.98	9.8	19+00 <sup>0</sup>	19+24.4	19+31 <sup>0</sup>			943 R	Chippewa		12-4-85
					19+79 <sup>0</sup>		13145					
20+00	49.0	38.48	10.5		20+78 <sup>0</sup>							
21+00 <sup>0</sup>	49.7	38.98	10.7		21+00 <sup>0</sup>	21+89 <sup>0</sup>						
					22+26 <sup>0</sup>							
22+00	50.5	1339.48	11.0	22+00 <sup>0</sup>	22+66 <sup>0</sup>							
					23+15 <sup>0</sup>							
23+00	51.9	39.98	11.9		23+40 <sup>±</sup>							
	52.0	40.18	11.8		23+60 <sup>0</sup>							
24+00	52.2	40.48	11.7		24+17 <sup>0</sup>	24+15 <sup>0</sup>						
	52.3	1340.59	11.7	24+22 <sup>0</sup>								
<b>LAT. 7-F</b>												
0+00	1340.2	1330.90	9.3	Exist. 0+00 <sup>0</sup>	0+38 <sup>0</sup>							
1+00	40.1	31.30	8.8		0+44 <sup>0</sup>		6973		745 R	Fairway		11-12-82
2+00	40.0	31.70	8.3		1+15 <sup>0</sup>	1+70.3 <sup>0</sup>	C529121190		750 R	Chippewa Fairway	12-29-75	9-9-80
					2+06 <sup>0</sup>							
					2+12 <sup>0</sup>							
	40.0	1331.90	8.1	2+50 <sup>0</sup>	2+43 <sup>0</sup>		203-201982		736 R	Chippewa		7-8-83
					2+90 <sup>0</sup>	2+84 <sup>0</sup>						
3+00	40.0	32.10	7.9		3+68 <sup>0</sup>	3+62 <sup>0</sup>						
4+00	40.0	32.50	7.5		4+40 <sup>0</sup>		26095		715 R	Fairway		9-10-90
					4+50 <sup>0</sup>	4+90 <sup>0</sup>						
5+00	39.8	1332.90	6.9	5+00 <sup>0</sup>	4+96 <sup>0</sup>							
<b>LAT. 7-G</b>												
0+00	1340.2	1330.92	9.3	Exist. 0+00 <sup>0</sup>	0+69 <sup>0</sup>							
					0+75 <sup>0</sup>							
1+00	40.2	1331.30	8.9	1+00 <sup>0</sup>								

17+00-924 Valleyview - 5-16-63 - 18+66 Top  
 # 27258 - 345-91 - 921 W Chippewa - Campbell - 16+20.9 4 PVC 40 top

2001-00864-4/10/01-969 N Chipper Ln- Roto Rooter - Pipe Burst Replacement- SDR17 16' from main- used 40' pvc -  
tied to clay tile - ITWIN CO

2004-00325 2/10/04 700 N Fairway- Redde Ind- ITWIN CO, Ifermco, shallow, 4"40PVC -ok out  
to easement- full replacement