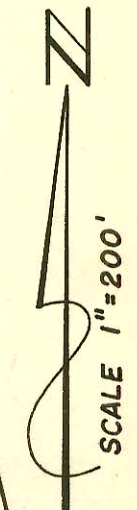
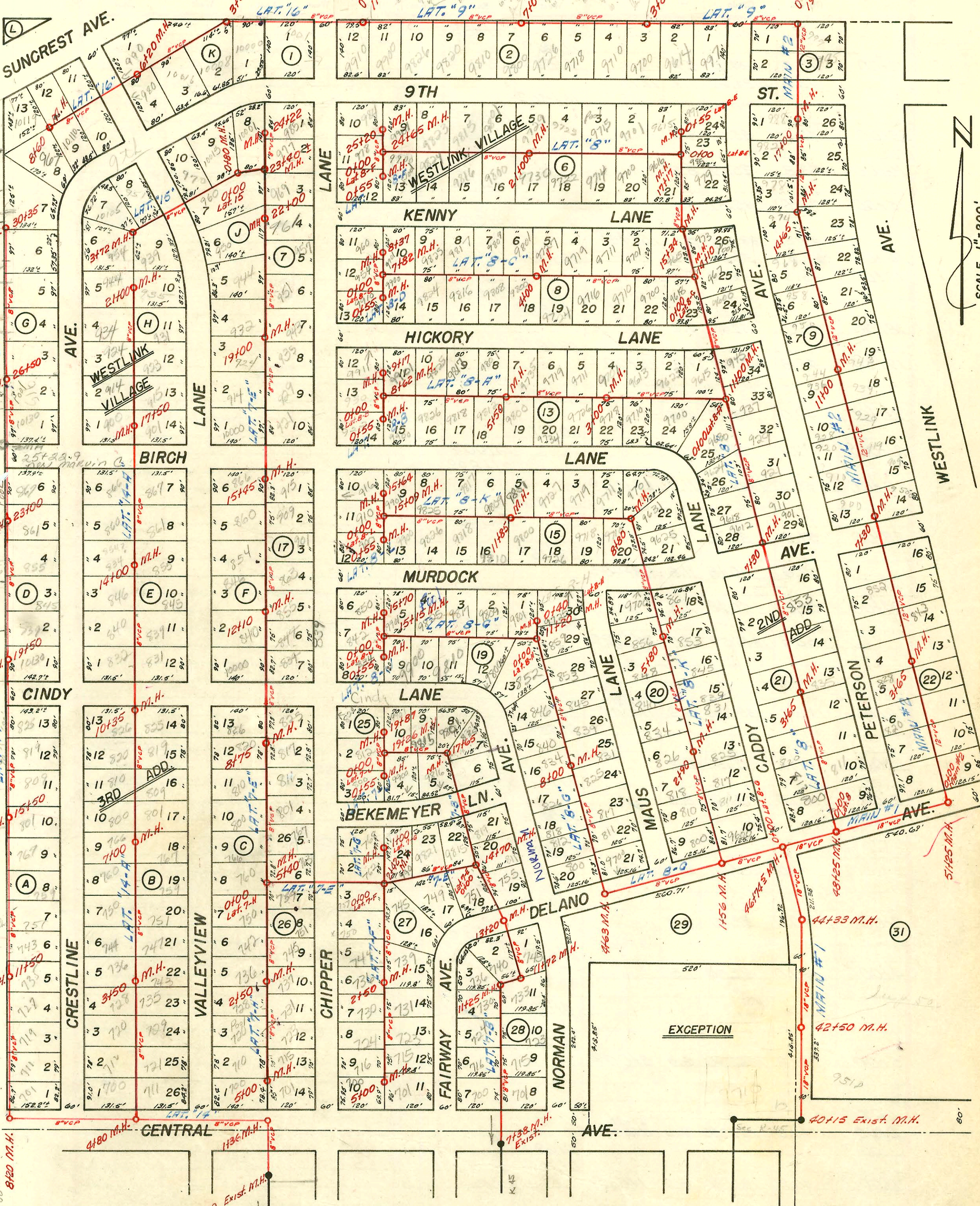


Western 9th Addition
Block 10
Lots 2, 3, 4, 5, 6, 7 & 8
Spec. Lot. + Sub. 300 paid \$1750.00
M + B Investment Co.
Forward Manager
Rev. #27097



Special Fee
for East side
of Tah-n-hah

**SANITARY SEWER SYSTEM
WESTLINK VILLAGE
SEDGWICK COUNTY, KANSAS**

H. R. HUNTER CONSULTING ENGINEER
WICHITA, KANSAS DATE: 3-7-55 (NOTE: SEA LEVEL ELEVATIONS)
(BOOKED FROM PLANS JAN. 1963)

210159 424/9 90 in only - 17+72.0 top 4" SDK 35

CONSTRUCTION RECORD						SERVICE RECORD						
STATION	ELEVATION		Depth	MANHOLE	4-INCH "Y" BRANCHES		No. of Permit		House Number		DATE OF PERMITS	
	Ground	Grade			North West	South East	North West	South East	North West	South East	North West	South East
12+00	35.4	27.95	7.5									
13+00	37.0	28.95	8.1		12+23 ⁰	12+26 ⁰						
					13+01 ⁰	12+98 ⁰						
14+00	39.2	29.95	9.3		13+70 ⁰	13+73 ⁰						
15+00	40.0	30.95	9.1		14+49 ⁰	14+52 ⁰			9901 W murdock		10-7-81	
	40.0	1331.10	8.9	15+15 ⁰	15+30 ⁰		4262					
					15+63 ⁰							
	40.0	1331.65	8.4	15+70 ⁰	15+61.8 ⁰		# 4086		850 chipper 2W		9-2-81	
LAT. 8-H												
0+00	34.5	1327.15	7.4	Exist. 0+00 ⁰								
	34.5	1327.31	7.2	0+40 ⁰		0+34 ⁰						
LAT. 8-J												
0+00	40.0	1331.10	8.9	Exist. 0+00 ⁰								
					0+20 ⁰	0+14 ⁰	98-21297		842 chipper R		2-23-98	
					4" SCH 40 1+94 WYE 0+50 ⁰		95-12157		834 chipper R		1-24-95	
	40.0	1331.32	8.7	0+55 ⁰								
LAT. 8-K												
0+00	30.8	1323.29	7.5	Exist. 0+00 ⁰								
					0+61 ⁰	0+58 ⁰						
1+00	31.3	23.69	7.6									
2+00	31.5	24.09	7.4		1+27 ⁰	1+30 ⁰						
					4" SCH 40 1+94 WYE 2+05 ⁰		95-09579		818 maus R		5-30-95	
					2+80 ⁰	2+77 ⁰						
3+00	31.5	1324.45	7.1	2+90 ⁰								
	31.5	24.49	7.0		3+70 ⁰	3+67 ⁰						
4+00	31.9	24.89	7.0		4+39.05		7108		16850 840 maus R	831 Daddy (3+47) 12-3-82	3-26-63	
5+00	32.2	25.29	6.9		4+52 ⁰	4+49 ⁰						
					5+28 ⁰	5+25 ⁰						
	31.9	1325.61	6.3	5+80 ⁰	4" SCH 40 5+97 ⁰	5+94 ⁰	2001- 02600		856 maus R	see next pg	10-18-01	
6+00	31.8	25.69	6.1		6+70 ⁰	6+67 ⁰						
7+00	33.0	26.09	6.9									
8+00	34.0	26.49	7.5			7+88 ⁰						
						8+70 ⁰						
	34.0	1326.94	7.1	8+80 ⁰								
9+00	33.8	27.02	6.8		9+23 ⁰	9+26 ⁰						
10+00	34.0	27.42	6.6		10+05 ⁰	10+08 ⁰						
					10+72 ⁰	10+75 ⁰						
11+00	34.8	27.82	7.0		4" SCH 40 11+55.4 11+47 ⁰	11+50 ⁰	95-38067		9801 Birch		3-30-85	
	35.5	1328.26	7.2	11+85 ⁰								
12+00	35.6	28.41	7.2		12+26 ⁰	12+29 ⁰						
13+00	37.0	29.41	7.6		13+89 ⁰							
14+00	39.2	30.41	8.8		14+42 ⁰	14+45 ⁰						
15+00	41.5	31.41	10.1									
	41.6	1331.85	9.8	15+09 ⁰	15+19 ⁰							
					15+55 ⁰							
	41.8	1332.40	9.4	15+64 ⁰								

Repair for 861 Caddy Ln. - Jim Borges - 8-8-78-C67137 (6+44.3)

SWR2001-02606 10/18/01 856 N Maus Ln - Redde Roofr - 4" SCH40 - Replaced 27' section 13' from house 4" TWIN CO at 13' from house - 1

R 3/12/01 - see below
Rep. 2000-02408-9818 w Murdock - 11/3/00 - Mies Const - 4" SCH40 - 1 TWIN CO, 1-6x4 Fernco to claytile, 1-4" Fernco clamp
Rep 2001-00523-9818 w Murdock - 3/12/01 - McClungs - 4" SCH40 - 99' w of MH 11+85 (12+84) - 1 TWIN CO, 2 1-way CO, 1 W/E and 2H45