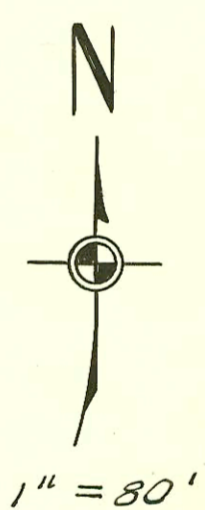
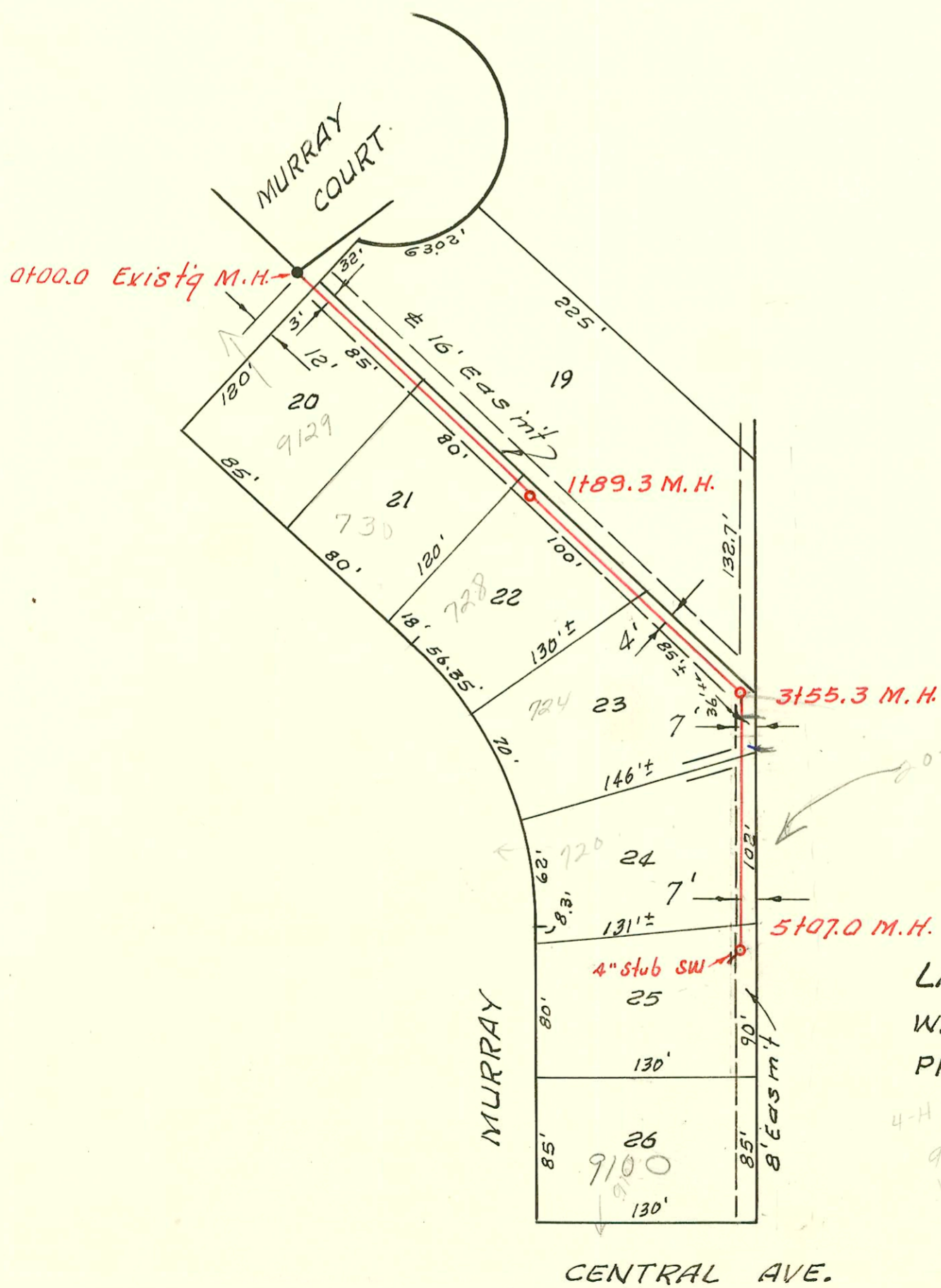


K



LAT. 16, WESTLINK SEWER
 W. B. CARTER CONST. CO. INC. 10-65
 PRIVATE CONTRACT, BK. NO. K-73
 4-H club addr.
 9000 W. Central
 (Spec. Fee to connect to sewer)
 10-6-65
 B264

CONSTRUCTION RECORD

SERVICE RECORD

STATION	ELEVATION		Depth	MANHOLE	4-INCH "Y" BRANCHES		No. of Permit		House Number		DATE OF PERMITS	
	Ground	Grade			North West	South East	North West	South East	North West	South East	North West	South East
4+00	30.7	19.93	10.8									
5+00	31.0	20.13	10.9		5+34		57498		952 Peterson		8-1-76	
6+00	31.2	20.33	10.9									
7+00	31.5	20.53	11.0			7+63	Sup C14494		7500 W. Murdock		6-16-69	
	31.3	1320.59	10.7	7+30 ²								
8+00	31.5	20.73	10.8				#02633		90 Peterson		2-17-81	
9+00	31.8	20.93	10.9									
10+00	32.0	21.13	10.9									
11+00	32.0	1321.33	10.7	11+00 ²								
12+00	32.4	21.53	10.9									
13+00	32.6	21.73	10.9									
14+00	32.5	21.93	10.6									
	32.5	1322.06	10.4	14+65 ²								
15+00	33.0	22.13	10.9									
16+00	32.8	22.33	10.5									
17+00	31.7	1322.53	9.2	17+00	17+14.5 ²		1147		979 Peterson		9-4-80	
18+00	31.9	22.73	9.2									
19+00	30.3	22.93	7.4									
	31.0	1323.00	8.0	19+35 ²								
							Tap B974	(11+03)	943 Westlink		3-4-64	
							Tap #17301	(8+44)	749 Westlink		6-20-63	
							Tap B-41	(18+86)	945 Westlink		8-19-63	
							Tap B1588	(10+41)	937 Westlink		7-1-64	
							Tap B1589	(9+96)	929 Westlink		7-1-64	
							Tap B1772	(9+17)	919 Westlink		8-12-64	
							Tap B3743	(16+83)	989 Westlink		1-25-65	
							Tap B3258	(8+26)	909 Westlink		4-22-65	
							Tap B4030	(19+01)	979 Westlink		8-26-65	
0+00	144.3	135.00	9.3	0+00 ² Existing M.H.								
1+00	143.8	135.30	8.5		0+35 ²							
					0+43.1							
					1+24 ²							
	143.1	135.57	7.5	1+89 ³	1+51 ²							
2+00	143.1	135.60	7.5									
					2+00 ²							
					2+88 ⁴							
3+00	142.5	135.90	6.6									
	141.7	136.08 out	5.6									
		136.18 in	5.5	3+55 ³								
4+00	141.7	136.30	5.4									
					4+08 ⁴	4+10 ⁴						
5+00	141.8	136.60	5.2									
	141.6	136.63	5.0	5+07 ²	4" stub SW	5+02 ²						
							#B5026		9102 W. Central		3-10-66	

LAT. 16, WESTLINK SEWER

Rec # 21296 9000 ft. Central - \$250.00 spec. for pd. 10-10-68
 Rec # 419460 8800 W. Central - \$250.00 spec. for pd. 7-25-78 Arrowhead Excavating C67505 - Jack Brennan tap 3+72
 5/6 at wye + 10' off main - 4" clay