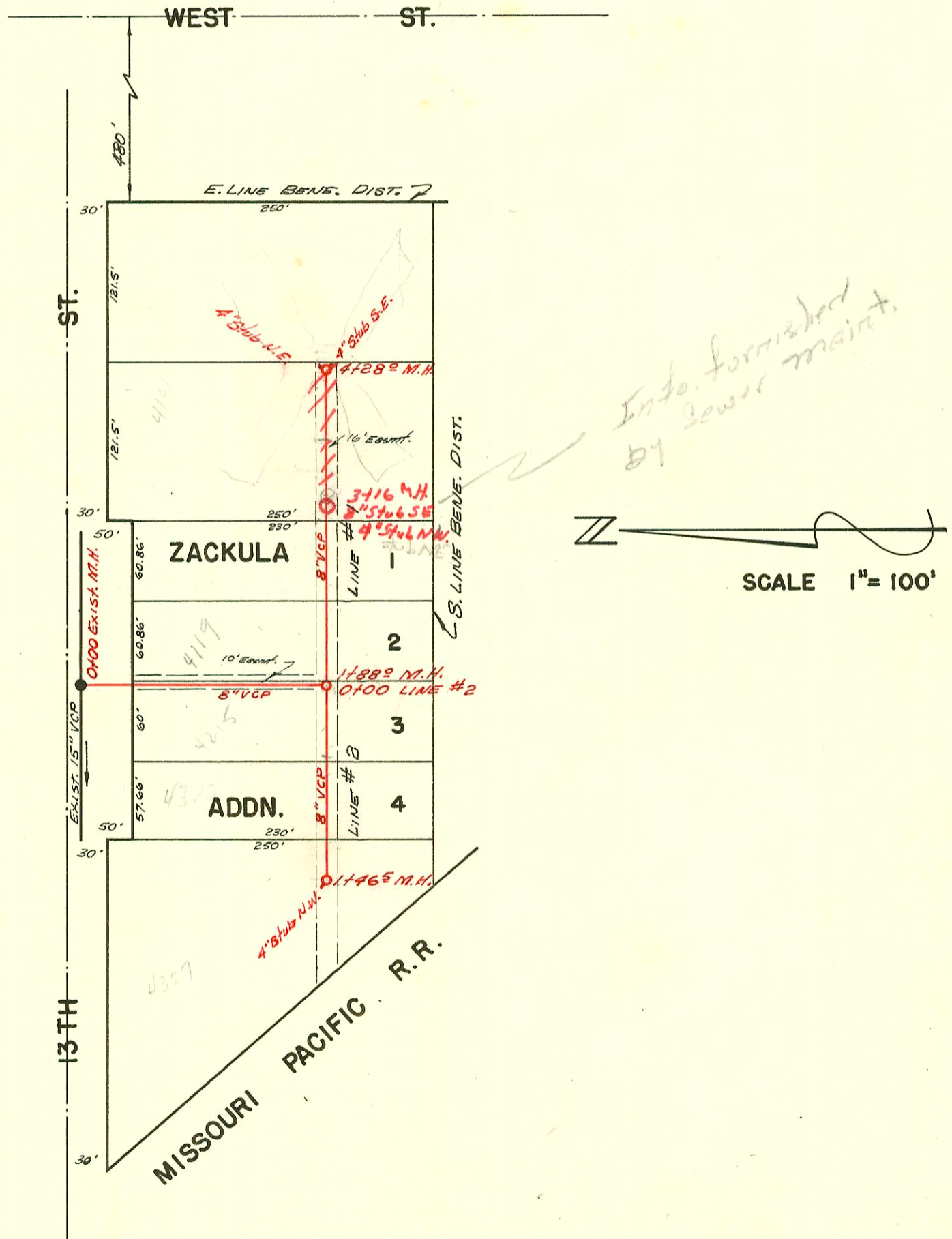


LAT. 8 - SUB. 7 - S. S. #22
 UTILITY CONTRACTORS, INC. 1-27-63
 K-73 PROV. NO. C21-12 BOOKED 3-6-63



LAT. 171, SUB. 5, S. S. NO. 22
 W.B. CARTER CONSTRUCTION CO. 3-21-63
 K-70 C22-40 BOOKED 4-10-63

CONSTRUCTION RECORD

SERVICE RECORD

STATION	ELEVATION		Depth	MANHOLE	4-INCH "Y" BRANCHES		No. of Permit		House Number		DATE OF PERMITS	
	Ground	Grade			North West	South East	North West	South East	North West	South East	North West	South East
LAT. 8 - SUB 7, S.S.# 22												
0+00	120.9	112.24	8.7	EXIST. 0+00								
	119.4	112.41	7.0	0+33								
1+00	118.9	112.54	6.4		0+40	0+42		15455				1-15-56
					1+00	1+02		17470				12-15-86
						1+56		16770				4-27-67
	119.6	112.72	6.9	1+89	1+71	1+40		20112				2-17-88
LAT. 171, SUB. 5, S.S.# 22												
0+00	125.76	119.50	6.3	EXIST. 0+00 (RISER)								
1+00	126.3	119.90	6.4									
	125.8	120.33	5.5	1+88								
2+00	125.2	120.40	4.8									
					2+15	2+03						
								049298		4119 W. 130		4-29-75
3+00	126.3	120.80	5.5									
					3+30	3+32						
					3+75	3+82						
4+00	127.5	121.20	6.3	NEW MH 3+16								
	127.7	121.31	6.4	4+88	4" stub NE	4" stub SE		034375		1301 W. West St		8-18-72
LINE #2												
0+00	125.8	120.37	5.4	EXIST. 0+00								
1+00	125.5	120.75	4.8									
	126.2	120.94	5.3	1+46	4" stub NW							

LINE #1

LINE #2