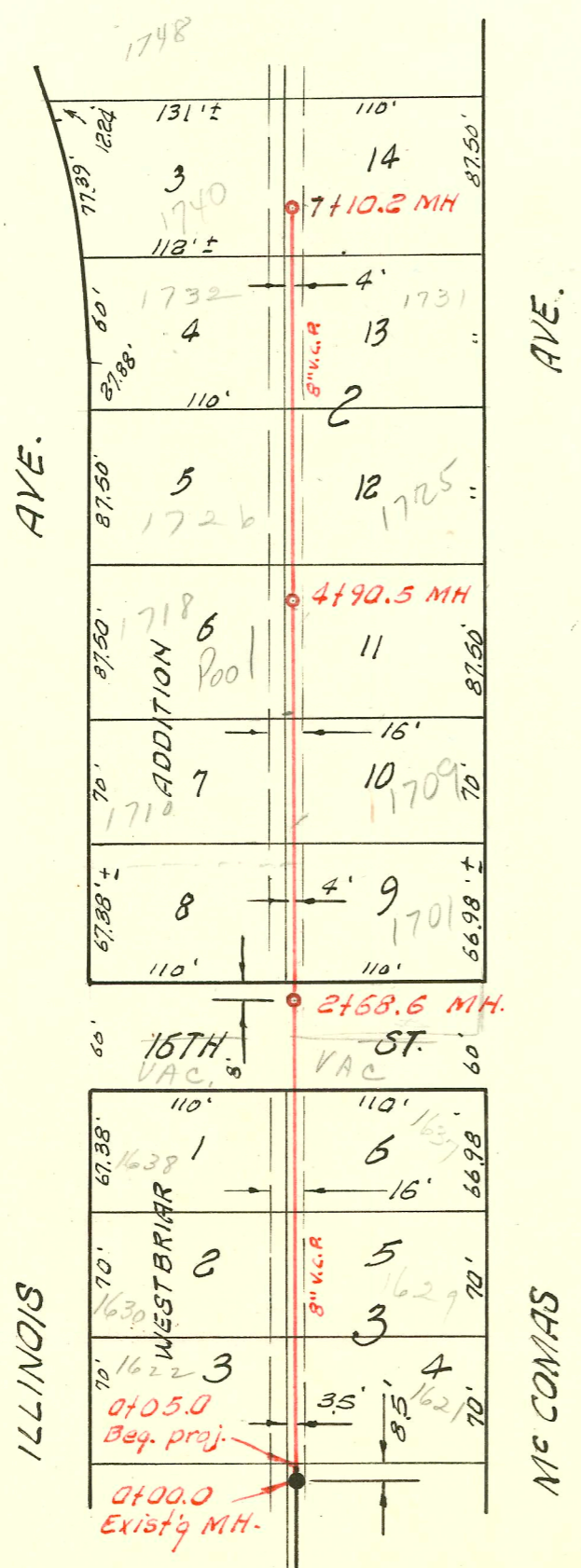
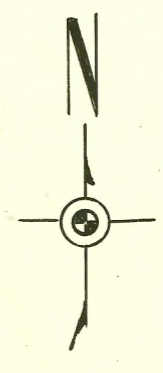


PART OF WESTLINK VILLAGE IMP. DIST.
 H.R. HUNTER, CONSULTING ENGR. 3-7-55
 BOOKED FROM PLANS 4-23-63
 "SEA LEVEL ELEVATIONS"



LAT. 191, SUB. 5, S. S. NO. 22
 UTILITY CONT. INC. AUG. 1966
 PROJ. NO. C26-13 BK. NO. K-80
 9-6-66



1" = 100'

K

K

See 9-150

