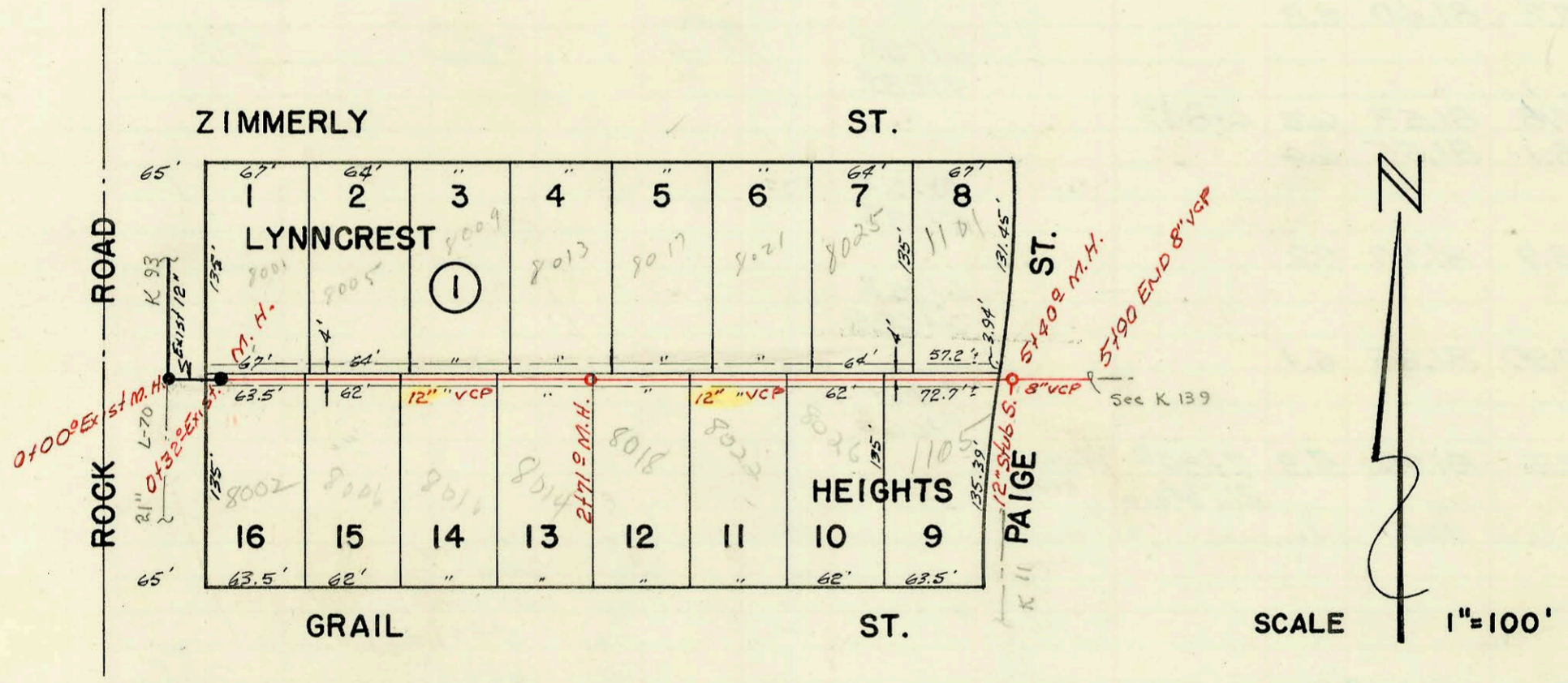


Scale 1"=100'

LAT. 170, SUB. 5, S.S. NO. 22
 MID-STATES CONSTRUCTION CO., INC. 4-2-63
 K-82 PROJ. NO. 022-25 BOOKED 5-2-63



SCALE 1"=100'

LAT. I, SUB. II, W.I.S.
 UTILITY CONTRACTORS, INC. 4-9-63
 PROJ. NO. 022-38 K-82 5-15-63

CONSTRUCTION RECORD

SERVICE RECORD

STATION	ELEVATION		Depth	MANHOLE	4-INCH "Y" BRANCHES		No. of Permit		House Number		DATE OF PERMITS		
	Ground	Grade			North West	South East	North West	South East	North West	South East	North West	South East	
LINE #1 LAT. 170, SUB. 5, S.S. #22	0+00	119.2	109.76	9.4	Exist. 0+00 ²								
		119.0	110.06	8.9	0+97 ⁵								
	1+00	119.0	110.06	8.9									
	2+00	119.8	110.36	9.4		(63.7' from Mt 1+97.5) 2+13.8 TAP		18700	# 8523 17056	4822 W. 1st	7322 W 1st St	7-15-67	6-30-63 4-30-63
					2+77.5 Mt								
3+00	119.9	110.66	9.2										
	120.0	110.74	9.3	3+25 ²						4902 W. 1st St.		3-63	
								Conn.					
								# 17049		4906 W. 12th St.		5-2-63	
4+00	120.3	110.96	9.3										
										4903 W. 12th St. B		5-2-63	
5+00	119.3	111.26	8.0										
	119.4	111.43	8.0	5+55 ²				# 17051		4910 W. 12th St.		5-2-63	
LINE #2	0+00	119.0	110.16	8.8	Exist. 0+00 ²								
		119.0	110.39	8.6	0+75 ²	4' stub S.W.	4' stub S.E.	# 17035	# 17034	4812 W. 1st St.	4802 W. 1st St.	4-30-63	4-30-63
LAT. 1, SUB. 11, W.I.S.	0+00	136.00	128.0	8.0	Exist. 0+00 ²	N.	S.						
		138.50	128.21	10.3	Exist. 0+32 ²								
	1+00	139.4	128.70	10.7		0+45 ²	0+47 ²	B2131	# 86044	8001 Jimmery	8002 Grail	10-13-64	7/28/66
						1+04 ²	1+06 ²		B5445		8006 Grail		4-14-66
						1+73 ²	1+66 ²		B5446	8009 E. Jimmery	8010 Grail		4-14-66
	2+00	139.2	129.40	9.8				B2251				11-4-64	
											8014 Grail		4-13-66
						2+41 ²	2+32 ²		B5437	8013 E. Jimmery			8-6-64
		140.6	129.89	10.7	2+71 ²			B1742					
									B5102		8018 E. Grail		2-16-66
	3+00	141.3	130.10	11.2		3+01 ²	3+53 ²		B354	8017 E. Jimmery		11-5-63	
						3+62 ²	4+15 ²		# 18-14	8021 Jimmery		8-13-63	11-5-65
4+00	142.5	130.80	11.7		4+28 ²	4+82 ²		B4496	8025 Jimmery	8036 E. Grail	5-20-63	11-8-65	
					4+93 ²			17140					
5+00	145.2	131.50	13.7					1358	1101 Paige		1-1-64		
	147.7	131.78	15.9	5+40 ²		12" stub S.							
		8" VCP E 134.0 12" stub S. 131.90	2.0%			Elev 137.8 END 8" VCP @ 5+90							

B-2132 - 1105 George Bradford Pkwy - 2-16-65 - top (4+56)