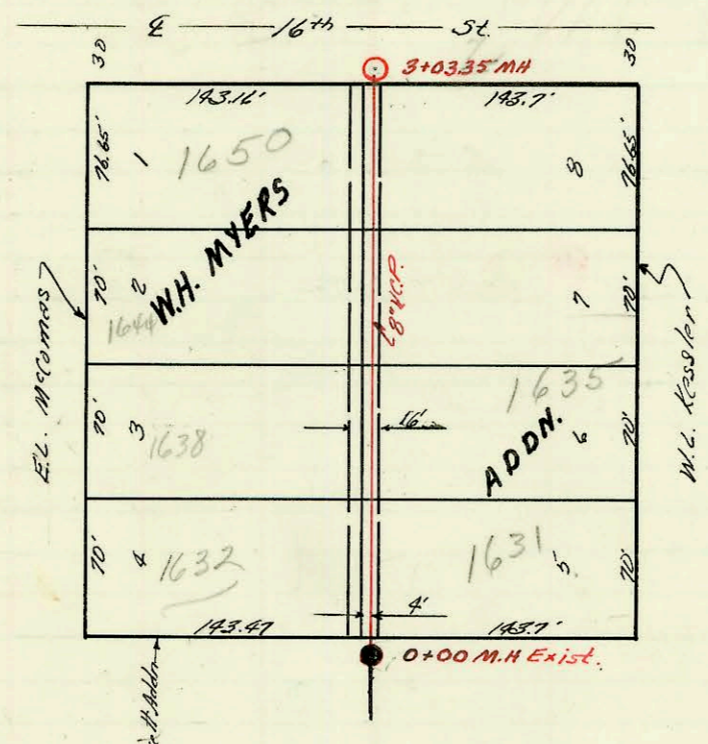
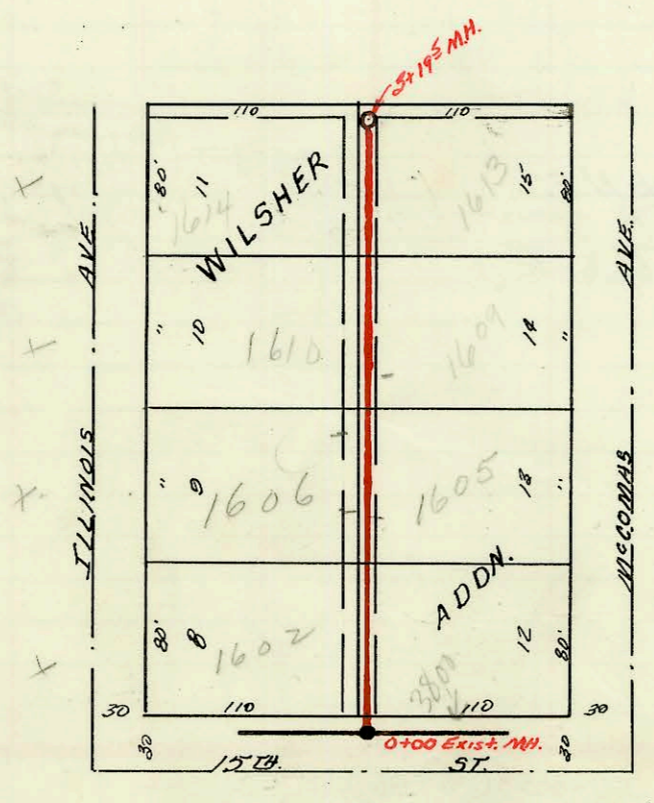


LAT. 18, SUB. 5A, WIS
 MID-STATES CONSTRUCTION CO., INC. 4-30-63
 PROJ. NO. C20-37 K-81 BOOKED 5-16-63



LAT 167 SUB 5 S.S. 22
 UTILITY CONTRACTORS INC. 5-21-63
 PROJ. C 21-23 K 76 BOOKED 6-11-63



LAT. 172 SUB. 5 S.S. 22
 UTILITY CONTRACTORS INC. 5-21-63
 PROJ. C 22-44 K 76 BOOKED 6-12-63

CONSTRUCTION RECORD

SERVICE RECORD

STATION	ELEVATION		Depth	MANHOLE	4-INCH "Y" BRANCHES		No. of Permit		House Number		DATE OF PERMITS		
	Ground	Grade			North West	South East	North West	South East	North West	South East	North West	South East	
LAT. 18, SUB. 5A W15													
0+00	176.7	168.2	8.5	Exist. 0+00	Exist. stub N.								
1+00	177.3	168.6	8.7		1+06 ^E	1+04 ^E							
					1+81 ^E	1+79 ^E			124	315		9-10-63	
2+00	177.6	169.00	8.6	2+00	2+75 ^E	2+73 ^E	11913		312	325	9-4-64		
									Brookfield	Stratford		10-25-63	
3+00	178.0	169.40	8.6		3+34 ^I	3+32 ^I							
					3+89 ^E	3+87 ^E	B529	5262	326	333	12-6-63	12-28-64	
	178.6	169.80	8.8	3+99 ^E					Brookfield	Stratford			
LAT. 167 SUB. 5 S.S. 22													
					West	East							
0+00	126.7	120.04	6.71	Exist. 0+00	0+25 ^E	0+23 ^E	B5324	17287	1632 N. McComas	1631 N. Kessler	3-24-66	6-19-63	
						0+98 ^E			B5514	1635 N. Kessler		4-26-66	
1+00	126.7	120.24	6.46		1+00	1+69 ^E	B3521		1638 N. McComas	1644 N. McComas	6-9-65		
					1+69 ^E	1+67 ^E	B3051				4-7-65		
2+00	127.0	120.44	6.71		2+40 ^E	2+38 ^E	B5619	#2030	1650 N. McComas	1649 N. Kessler	5-12-66	2-27-67	
3+00	126.9	120.64	5.84										
	126.5	120.65	5.83	3+03.35									
LAT 172 SUB. 5 S.S. 22													
					West	East							
0+00	126.08	119.76	6.33	Exist. 0+00	0+50 ^I	0+33 ^E	#17231		1602 Illinois		6-10-63		
1+00	126.3	119.95	6.37		1+15 ^E	1+13 ^E			B2684	1605 N. McComas		1-19-65	
					1+92 ^E	1+70 ^E			B6286	1610 N. Illinois	1607 N. McComas	9-2-66	7-27-65
2+00	126.2	120.15	6.06		2+74 ^I	2+72 ^I	B2792	B3867	1614 Illinois	1613 N. McComas	2-2-65	7-27-65	
3+00	126.0	120.35	5.70										
	126.0	120.39	6.0	3+19 ^E									

#B-2 - 318 Brookfield - Kennedy, Ply - 8-13-63 - top (2+97)
 B333 - 305 Stratford - Kennedy, Alby - 3-6-64 - Top (1+02)
 B1747 - 1606 N. Illinois - Robt. McElroy - 8-13-64 - top (1+58)
 B2563 - 341 W. Stratford - before fire - 12-28-64 - Top (3+99.0) m. 14
 B2953 - 3800 W. 150 - Vern Lippold - 4-19-65 - top 6 ft East of 0+00