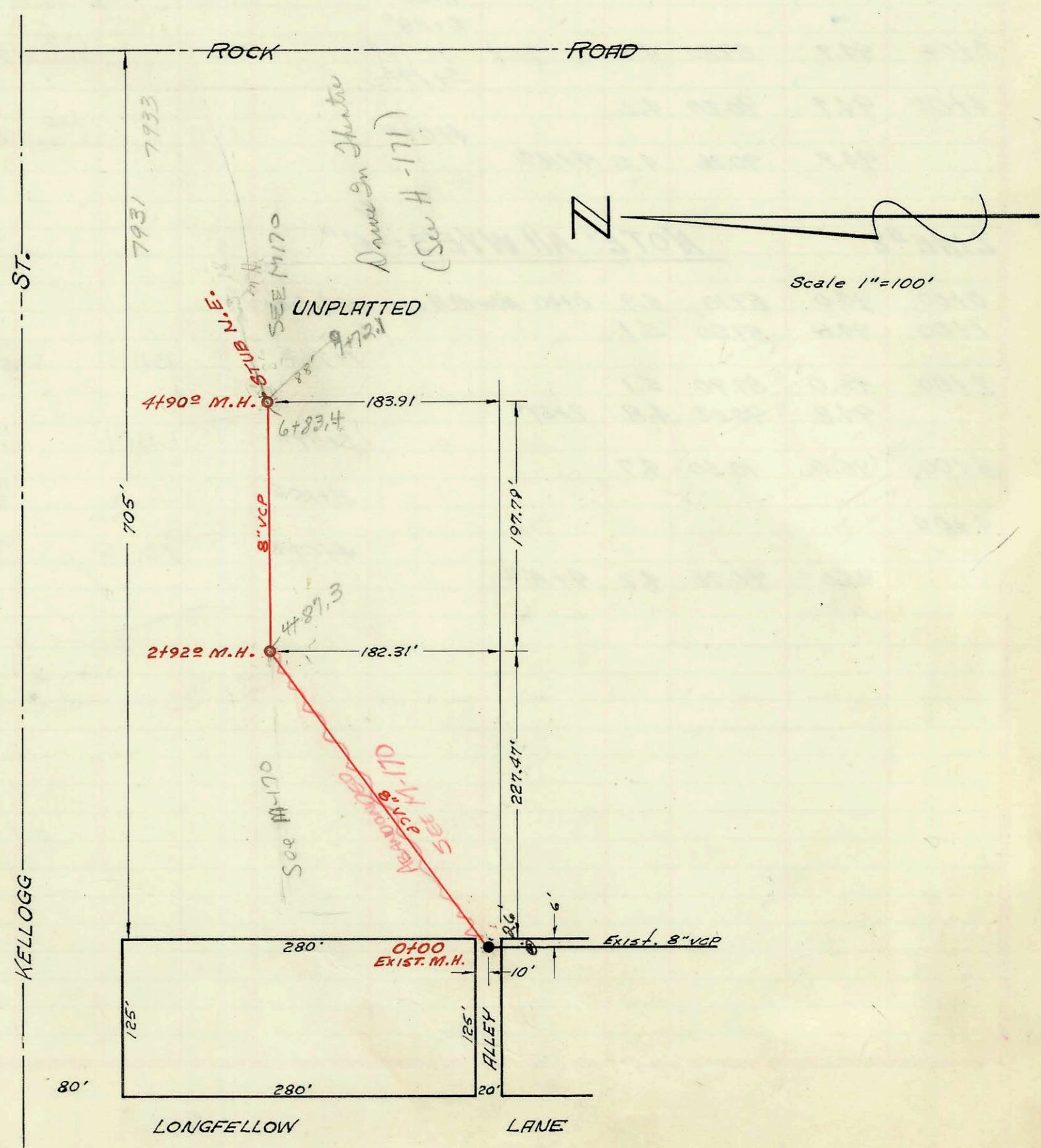


LAT. 174, SUB. 5, S.S. #22  
 MID-STATES CONSTRUCTION CO., INC. 4-30-63  
 PROJ. NO. C23-29 K-84 BOOKED 5-24-63



54 DRIVE-IN THEATER SAN. SEWER  
 GUY S. GUTHRIE CONSULTING ENGINEERS 4-24-63  
 PRIVATE PROJ. K-84 BOOKED 5-24-63

K95

CONSTRUCTION RECORD						SERVICE RECORD						
STATION	ELEVATION		Depth	MANHOLE	4-INCH "Y" BRANCHES		No. of Permit		House Number		DATE OF PERMITS	
	Ground	Grade			North West	South East	North West	South East	North West	South East	North West	South East
LRT. 174, SUB. 5, S.S. #22 LINE #1												
0+00	123.6	114.10	9.5	0+00 <sup>2</sup>								
1+00	124.7	114.30	10.4									
	125.0	out 114.46 in 114.50	10.5	1+78 <sup>2</sup>								
2+00	124.4	114.55	9.9									
					2+07 <sup>5</sup>			C4212	952 N. Young			8-3-67
					2+75 <sup>2</sup>							
3+00	123.0	114.75	8.3		2+95 <sup>2</sup>			C7352	4523 W. 9th			3-18-68
					3+27 <sup>2</sup>			#8888	4517 W. 9th			2-19-64
	122.7	out 114.83 in 114.89	7.9 7.8	3+37 <sup>4</sup>								
					W. 3+62 <sup>2</sup>	E. 3+60 <sup>2</sup>		C33346	146 N. Young			7-3-72
4+00	122.8	115.00	7.8									
					4+21 <sup>2</sup>	4+19 <sup>2</sup>		15927 C18120	940 N. Young	903 N. Young		6-3-85
					4+90 <sup>2</sup>	4+88 <sup>2</sup>		C2388	436 N. Young	851 N. Young		2-25-70
								C37996	Young	Dougherty		3-29-73
5+00	123.1	115.20	7.9									
					5+52.5	5+42 <sup>4</sup>		C436	930 N. Young	845 N. Young		10-14-66
					5+60 <sup>2</sup>			C17402	Young	Dougherty		12-22-69
	124.4	115.39	9.0	5+95 <sup>5</sup>								
LINE #2												
0+00	122.7	114.88	7.8	Exist. 0+00 <sup>2</sup>								
					N. 0+57 <sup>5</sup>			#17175	4511 W. 9th			5-24-63
1+00	122.6	115.08	7.5					C9200	911 Dougherty			6-20-
					1+07 <sup>2</sup>							
	122.6	115.11	7.5	1+15 <sup>2</sup>								
54 DRIVE-IN THEATER SAN. SEWER												
0+00	157.5	152.90	4.6	Exist. 0+00 <sup>2</sup>								
1+00	157.6	153.30	4.3									
2+00	160.1	153.70	6.4									
	163.0	out 154.07 in 154.24	8.9 8.7	2+92 <sup>2</sup>								
3+00	163.0	154.30	8.7									
4+00	164.0	154.70	9.3									
	164.0	155.06	8.9	4+90 <sup>2</sup>	Stub N.E.			C44678	1731 E. Kelllogg			5-1-74
					top in M.H.			17171	7233 E. Kelllogg			5-23-63
				M.H. 5+78	Stub E			43158	549 S Rock Rd (Ponye Hill)			1-24-74
								C32587				6-1-72

# 17448 - Jap 927 Dougherty - Leo Pkg 7-26-63 (0+96)  
 B1493 - Jap - 549 Rock Rd - Kennedy Pkg - 4-16-64 - (4+83.0) Seal off C 32586 6-1-72  
 Ben France