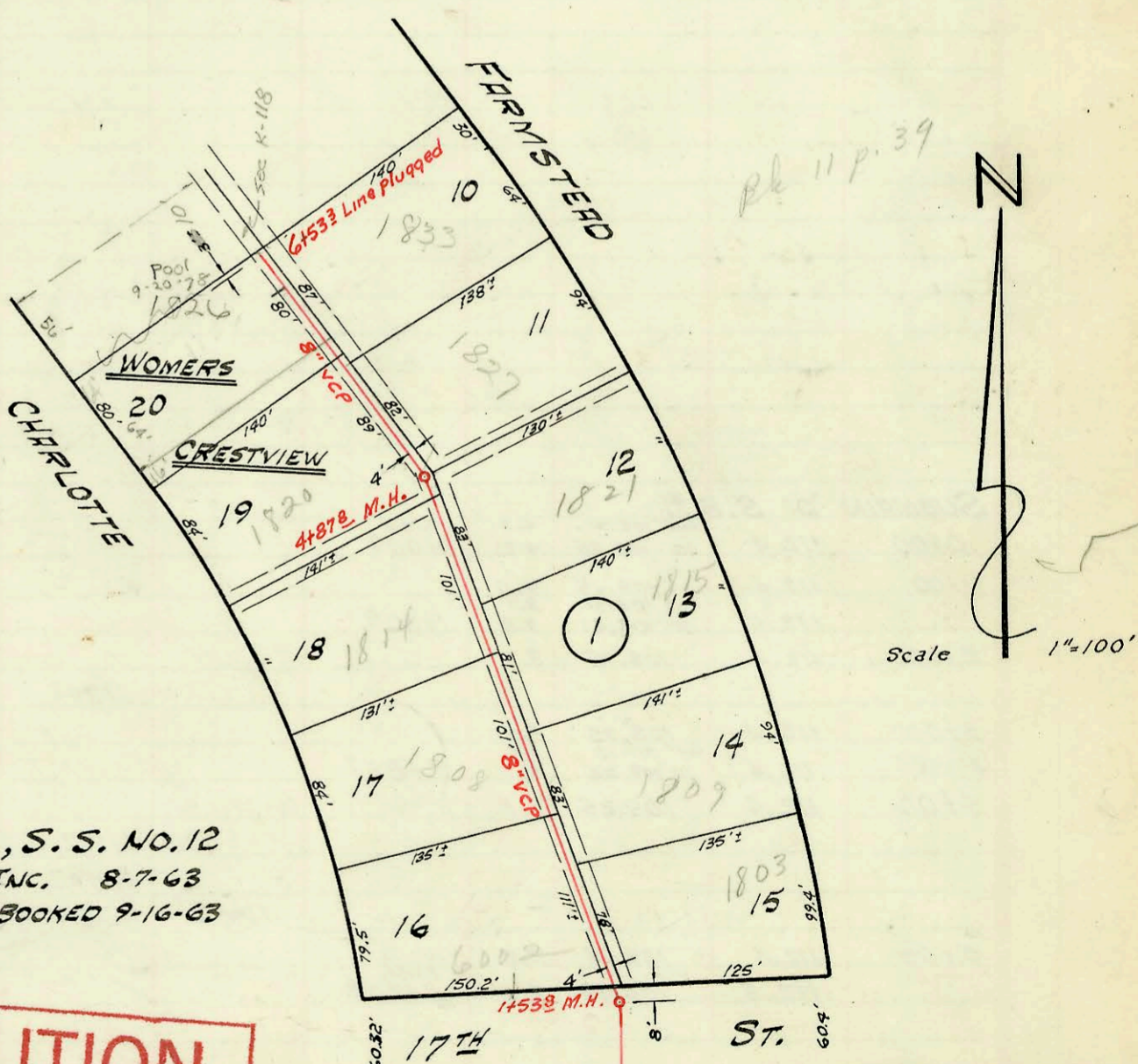
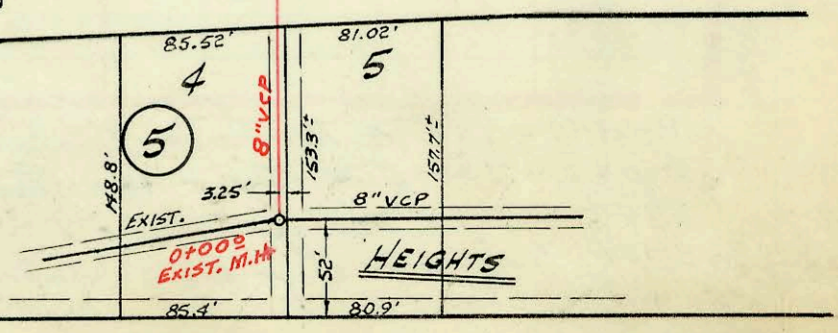


RECONSTRUCTION & RELOCATION OF S.S. # 12  
 W. B. CARTER CONSTRUCTION CO. 10-10-62  
 PROJ. NO. C10-63 BOOKED 9-10-63



LAT. 56, D.C.S. NO. 2, S.S. NO. 12  
 MID-STATES CONST. CO., INC. 8-7-63  
 PROJ. NO. C27-72 K-80 BOOKED 9-16-63

**CAUTION**  
**UNDERGROUND**  
**UTILITIES**  
 Please check with K G & E or  
 Southwestern Bell  
 Telephone Co. for Location



CONSTRUCTION RECORD						SERVICE RECORD						
STATION	ELEVATION		Depth	MANHOLE	4-INCH "Y" BRANCHES		No. of Permit		House Number		DATE OF PERMITS	
	Ground	Grade			North West	South East	North West	South East	North West	South East	North West	South East
<b>LINE #1</b>												
0+00	95.6	88.34	7.3	No M.H. 0+00 <sup>2</sup>	LINE PLUGGED							
1+00	94.5	88.54	6.0									
2+00	94.5	88.74	5.8									
3+00	94.3	88.99	5.3									
		94.8	89.04	5.8	3+49 <sup>2</sup>							
4+00	95.4	89.14	6.3									
5+00	96.2	89.34	6.9									
6+00	96.7	89.54	7.2									
		96.3	89.66	6.6	6+59 <sup>2</sup>							
7+00	96.7	89.83	6.9									
		96.6	89.89	6.7	7+29 <sup>2</sup>							
<b>LINE #2</b>												
0+00	96.5	87.96	8.5	No M.H. 0+00 <sup>2</sup>	LINE PLUGGED							
	96.8	out 88.00 in 88.16	8.8	0+25 <sup>2</sup>								
	96.6	88.28	8.3	No M.H. 0+91 <sup>2</sup>	LINE PLUGGED							
LAT. 56, DCS #2, S.S. #12												
0+00	221.95	209.40	12.6	EXIST. 0+00								
1+00	221.8	209.80	12.0									
		out 210.02 in 210.12	11.8	1+53 <sup>2</sup>								
2+00	221.8	210.30	11.5									
					2+04 <sup>2</sup>	2+02 <sup>2</sup>	B5650	1803	Permitted		5-17-66	
					2+93 <sup>2</sup>	2+70 <sup>2</sup> 2+78 <sup>2</sup>	B3170 B6288	1808	Charlotte Permitted	3-30-65	9-2-66	
3+00	221.5	210.70	10.8			3+45 <sup>2</sup>	C1577	1815	Permitted		1-17-67	
4+00	221.5	211.10	10.4		4+15 <sup>2</sup>	4+27 <sup>2</sup>	B2051	1814	Charlotte Permitted	9-30-64		
	121.8	out 211.46 in 211.56	10.3	4+87 <sup>2</sup>			B145	1821	Permitted		6-17-66	
5+00	121.8	211.60	10.2			5+14 <sup>2</sup>	C2614	1827	Permitted		4-10-67	
					5+24 <sup>2</sup>	5+72 <sup>2</sup>	B.159 C4610	1820	Charlotte Permitted	9-18-63	8-28-67	
6+00	222.0	212.00	10.0			6+16 <sup>2</sup>		1833				
					6+27 <sup>2</sup>		B411	1826	Charlotte		11-18-63	
	221.9	212.22	9.7	END 8" VCP @ 6+53 <sup>3</sup> (Line Plugged)								

#32378- 6002 E 17th Reynolds Pky - 11-25-64 - top (2+51.6)  
 #92-40911-7 2525 E Pawnee - NC - 4" ABS Sch 40 - 14" fall - ran  
 sewer out to where M.H. is to be built per engineering.  
 #93-5001-7 2525 E Pawnee - NC - 4" ABS 40 - M.H. Stub