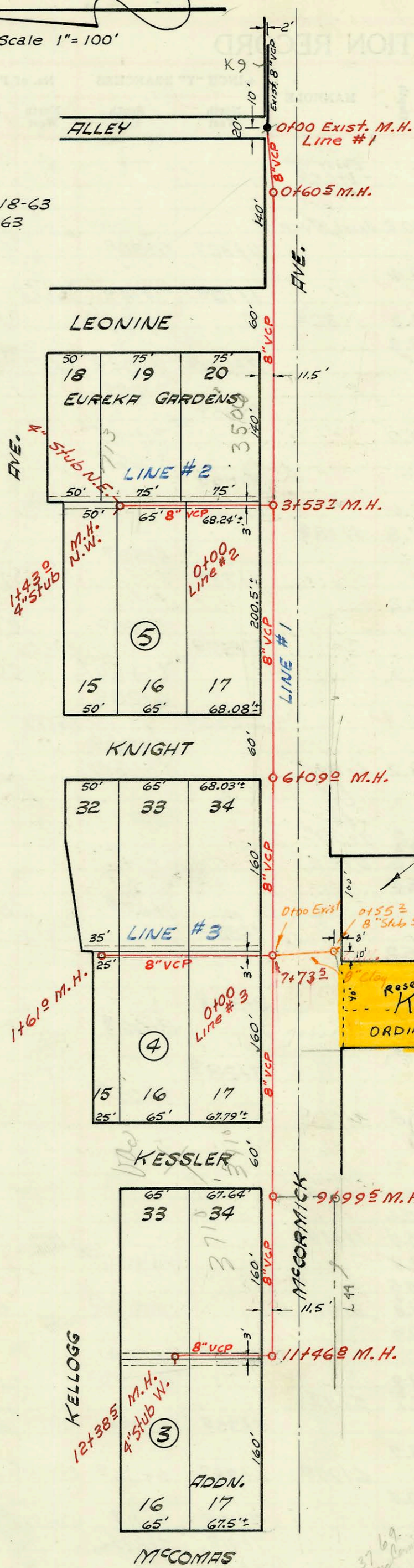


LAT. 89, S.S. #22
W.B. CARTER CONSTRUCTION CO., INC. 8-18-63
PROJ. NO. C23-35 K-83 BOOKED 10-3-63



Lat 125 S.S. #22
Built by Utility Cont.
Booked May 2, 1974 from S.S. JK #6
Proj No. DBKL574004

3769 Mechanical

CONSTRUCTION RECORD

SERVICE RECORD

STATION	ELEVATION		Depth	MANHOLE	4-INCH "Y" BRANCHES		No. of Permit		House Number		DATE OF PERMITS	
	Ground	Grade			North West	South East	North West	South East	North West	South East	North West	South East
LAT. 89, SS#22 LINE #1												
0+00	112.5	106.97	5.5	Exist.								
	113.0	107.06	5.9	0+60 [±]								
1+00	113.0	107.12	5.8									
2+00	112.8	107.27	5.5									
3+00	113.6	107.42	6.2									
	113.0	107.49	5.5	3+53 [±]								
4+00	113.2	107.60	5.6									
5+00	113.2	107.80	5.4									
6+00	113.3	108.00	5.3									
	113.3	108.02	5.3	6+09 [±]								
7+00	113.6	108.20	5.4									
	113.6	108.35	5.3	7+73 [±]								
8+00	113.6	108.40	5.2									
9+00	113.6	108.60	5.0		(4" w/ 9+28.1)			#20624	3710 McCormick		8-25-70	
	113.9	108.80	5.1	9+99 [±]								
10+00	113.9	108.80	5.1									
11+00	114.1	109.00	5.1									
	114.4	out 109.10 in 109.40	5.3 5.0	11+46 [±]		11+77.3		Job # 35452 #225	3710 McCormick 3710 McCormick		4-15-66 10-3-63	
12+00	114.4	109.50	4.9			11+89 [±]	11+91 [±]					
	114.5	109.58	4.9	12+38 [±]	4" stub w.							
LINE #2												
0+00	113.0	107.76	5.2	Exist.								
					0+24 [±]							
1+00	114.1	107.96	6.1					#22444 B5103	3506 S10 McCormick		1-20-66 5-76-66	
					1+11 [±]	1+09 [±]						
	114.7	108.05	6.2	1+43 [±]	4" stub N.W.	± N.E.		B440	713 S Fornia		11-22-63	
LINE #3												
0+00	113.6	108.62	5.0	Exist.								
							0+34 [±]					
							0+57 [±]					
1+00	112.9	108.82	4.1				0+91 [±]					
	112.3	108.94	3.4	1+61 [±]			1+48 [±]	1+46 [±]				
Lat 125 SS#22												
0+00	113.7	108.40	5.3	0+00 Exist.								
	113.1	108.62	7.5	0+55 [±]	5x6x8" SE			C44681	3665 McCormick		5-1-74	

#B2698 - - 3520 McCormick - Georgia Alby - 1-22-65 tap (0+76 Line 2)