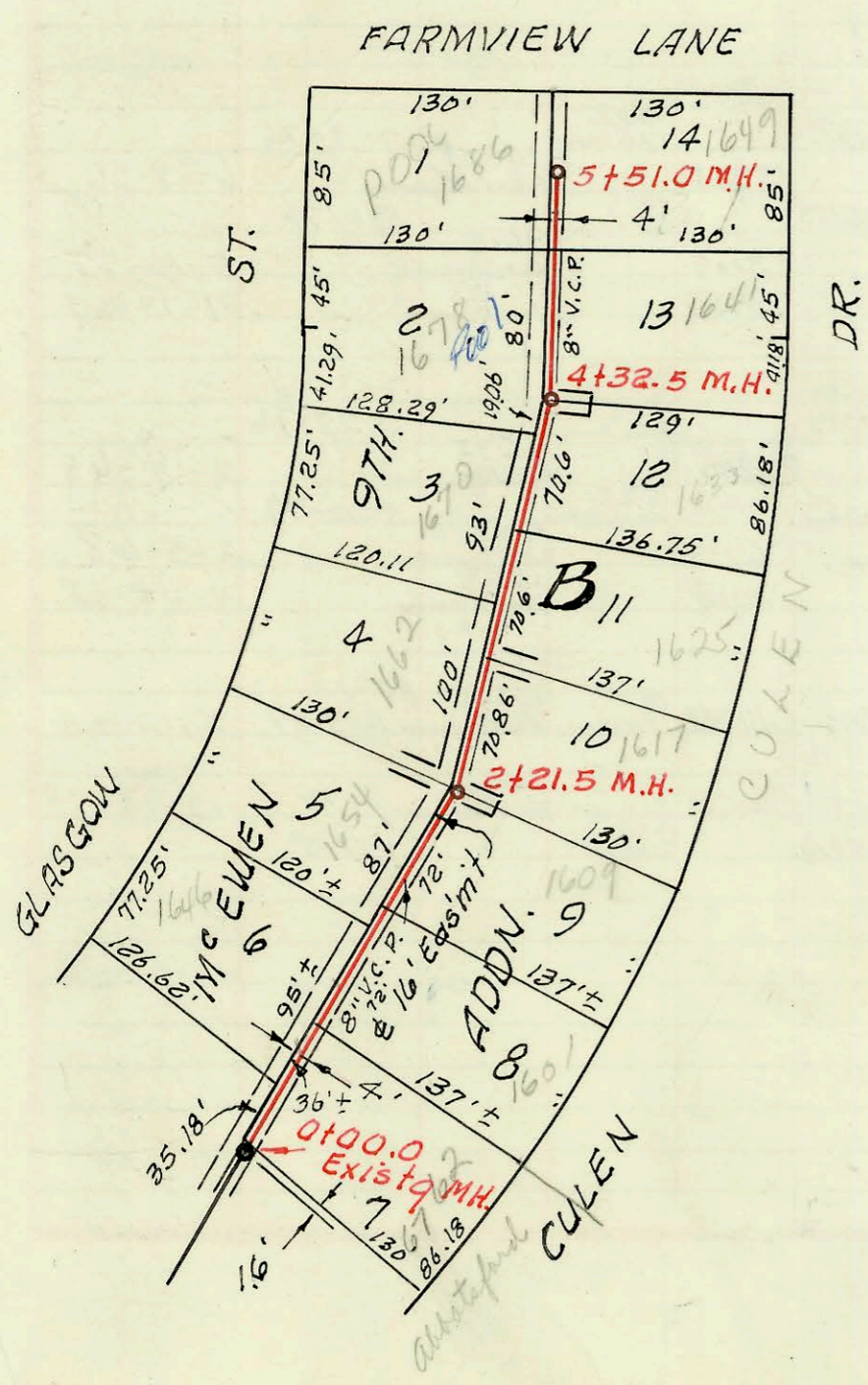


LATERAL 3, SUB. 17, SAN. SEWER No. 22  
 UTILITY CONTRACTORS INC. 10-22-63  
 PROJ. NO. C22-46 K-80 BOOKED 11-14-63

NOTE: This portion of 27th St  
 has been relocated as  
 indicated



LAT. 8, SUB. 12, W. I. S.  
 W. B. CARTER CONST. CO. INC.  
 PROJ. NO. C25-19, K-72, 12-65

12-21-65

1" = 100'

CONSTRUCTION RECORD

SERVICE RECORD

STATION	ELEVATION		Depth	MANHOLE	4-INCH "Y" BRANCHES		No. of Permit		House Number		DATE OF PERMITS	
	Ground	Grade			North West	South East	North West	South East	North West	South East	North West	South East
Lat. 3, Sub. 17, S.S. #22												
0+00	127.6	116.98	10.6	Exist. 0+00								
1+00	127.5	117.18	10.3		0+24 <sup>0</sup>	0+23 <sup>0</sup>						
2+00	127.5	117.38	10.1		1+70.3 1+51 <sup>0</sup>	0+70 <sup>3</sup> 1+49 <sup>0</sup>	067400 067816		2745 N. Amundson 2745 N. Amundson #6			7-17-78 10-4-78
3+00	127.8	117.58	10.2	2+99 <sup>2</sup>	2+55 <sup>5</sup>	2+54 <sup>5</sup>		067399 066906 B519	2745 N. Amundson #1 2811 N. Amundson			7-17-78 6-6-78 12-5-63
4+00	127.3	117.78	9.5		3+54 <sup>0</sup>	3+71 <sup>5</sup>	# B464		2844 N. Charles 2815 Amundson			11-27-63 11-22-63
5+00	127.8	117.98	9.8		4+49 <sup>0</sup>	4+51 <sup>0</sup>	# B-396	# B-397	2848 N. Charles 2825 Amundson			11-14-63 11-14-63
6+00	127.7	118.18	9.5	5+99 <sup>0</sup>	5+51 <sup>0</sup>	5+49 <sup>0</sup>	# B419	# B418	2858 N. Charles 2835 Amundson			12-30-62 11-19-63 11-19-63
7+00	127.7	118.18	9.5		6+43 <sup>0</sup>	6+65 <sup>0</sup>	# B745		2902 N. Charles 2905 Amundson			1-28-64 11-27-63
8+00	127.5	118.38	9.1		7+63 <sup>0</sup>		# B465		2914 Charles			11-27-63
9+00	127.1	118.78	8.3	8+99 <sup>0</sup>	8+65 <sup>0</sup>	8+15 <sup>5</sup> 8+43 <sup>0</sup>	B478	5102 B443	2926 N. Charles 2915 Amundson			1-26-62 11-26-63 11-29-63
10+00	127.1	118.78	8.3		9+40 <sup>5</sup> 9+59 <sup>0</sup>	9+57 <sup>0</sup>		B5787 C1912	2929-33 N. Amundson 2936 N. Charles			6-9-66 5-5-70
11+00	127.2	118.98	8.2		10+54 <sup>3</sup> 10+52 <sup>3</sup>	9+97 <sup>0</sup>		B5788	2935-37 N. Amundson			6-9-66
12+00	127.0	119.18	7.8		11+92 <sup>0</sup>			B1621	1911 W. 2947 N.			7-7-64
	127.1	119.27	7.8		12+36 <sup>1</sup>			B537	2901 Charles			7-9-63
	127.1	119.37	7.7	11+43 <sup>5</sup>	12+42 <sup>1</sup>							
	127.1	119.58	7.5									
LINE #1-A												
0+00	127.1	119.38	7.7	Exist. 0+00	0+24 <sup>5</sup>			C9869	1925 W. 2945 N.			7-31-68
1+00	127.2	119.57	7.6		1+03 <sup>5</sup>	1+01 <sup>5</sup>		B739	1927 W. 2945 N.	2944 N. Charles		5-22-68
	127.5	119.59	7.9	1+11 <sup>5</sup>	1+07.5 TAP			24971	2948 Charles			3-19-90
0+00	193.3	188.73	4.6	0+00.0 Exist. 9 MH	0+22 <sup>0</sup>			C11879	6762 Abbottford			12-9-68
1+00	195.8	188.93	6.9		0+70 <sup>0</sup> 1+07 <sup>5</sup>	0+91 <sup>0</sup>		B4801	1601 Glasgow Cullen			12-21-65 8-29-67
2+00	196.1	189.13	7.0		1+50 <sup>0</sup>	1+61 <sup>3</sup>		C5317	1654 Glasgow Cullen			10-16-67 2-11-71
	196.0	189.18 out 189.28 in	6.8 6.7	2+21 <sup>5</sup>	2+41 <sup>0</sup>	2+39 <sup>0</sup>		C2280	1662 Glasgow Cullen			3-17-67
3+00	196.5	189.43	7.1		3+07 <sup>5</sup>	3+07 <sup>5</sup>		B4952	1677 Glasgow Cullen			1-17-66
4+00	196.7	189.63	7.1		3+39 <sup>0</sup> 3+87 <sup>5</sup>	3+66 <sup>0</sup>		B4302	1625 Glasgow Cullen			12-21-65
	196.7	189.70 out 189.80 in	7.0 6.9	4+32 <sup>5</sup>	3+87 <sup>5</sup>	3+66 <sup>0</sup>		B6387	B-4808 1670 Glasgow Cullen			9/27/66 12-21-65
5+00	197.1	190.05	7.0		4+41 <sup>5</sup>	4+53 <sup>0</sup>		C9708	1678 Glasgow Cullen			7-22-68
	197.4	190.27	7.1	5+51 <sup>0</sup>	5+29 <sup>0</sup>	5+31 <sup>0</sup>		C2983	B6389 1686 Glasgow Cullen			5-5-67 9-27-66

LAT. 8, SUB. 12, W. 1, S.

# B5787 - 2939 N. Amundson - Bradford Services 6-9-66 top (9+67.0) ✓  
 # B5790 - 2943 N. Amundson - Bradford Services 6-9-66 top ( )  
 B5792 - 2945 N. Amundson - Bradford Services 6-9-66 top ( )  
 B5793 - 2947 N. Amundson - Bradford Services 6-9-66 (12+39.1)  
 C67818 - 2745 N. Amundson - Bldg 4 - Bill Lee 8-17-78 (0+76.5)  
 C67817 - 2745 N. Amundson - Bldg 3 - Bill Lee 8-14-78 (0+83)  
 C67815 - 2745 N. Amundson - Bldg 2 - Bill Lee 8-14-78 (0+92.8)  
 C69146 - 2745 N. Amundson - Bldg 7 - C. Amundson 10-30-78