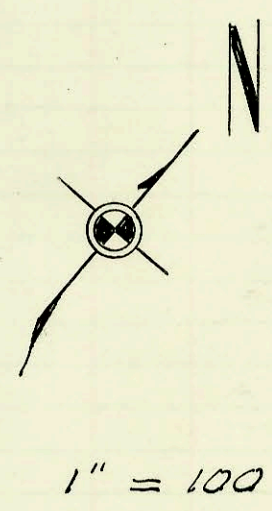
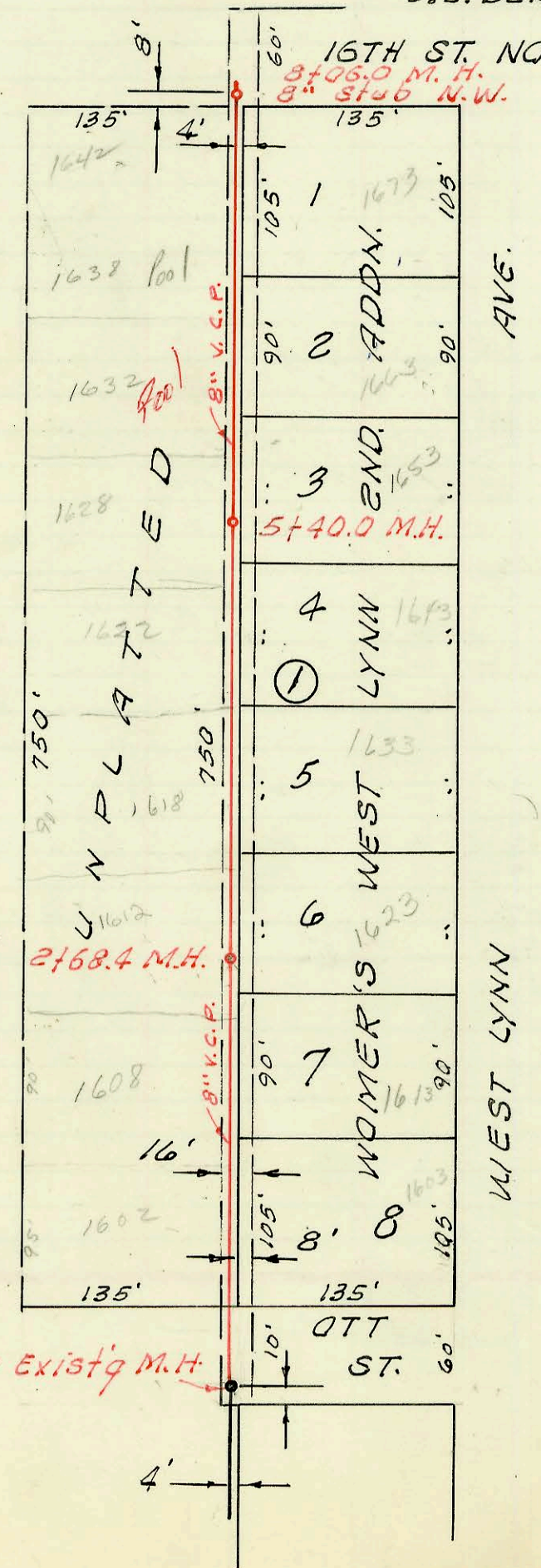


LAT. 15, SUB. 17, S.S. 22
 MID-STATES CONST. CO., INC. 12-9-63
 PROJ. NO. C23-32 K-80 BOOKED 12-16-63



LAT. 182, SUB. 5, S. S. NO. 22
 UTILITY CONTRACTORS, INC.
 PROJ. NO. C 24-22 BK NO. K-77
 JUNE 29, 1966

CONSTRUCTION RECORD

SERVICE RECORD

STATION	ELEVATION		Depth	MANHOLE	4-INCH "Y" BRANCHES		No. of Permit		House Number		DATE OF PERMITS	
	Ground	Grade			North West	South East	North West	South East	North West	South East	North West	South East
Lat. 15, Sub 17, 5.5.22 0+00	130.9	120.67 120.80	10.2 10.1	Exist. 0+00 ²								
1+00	131.5	121.00	10.5		0+80 ²		B5453		3260 Coolidge		4-15-66	
						1+18 ²		B1703	1585 W. 32nd No. 1501 W. 32nd No.		7-28-64	
2+00	131.3	121.16 121.20	10.1 10.1	1+79 ²		1+74.8		C57566			9-7-76	
3+00	131.3	121.40	9.9		2+32 ²			B2600	3252 Coolidge		1-5-65	
					3+07 ²			B816	3240 Coolidge		2-10-64	
					3+37 ²			B2835	3284 Coolidge		2-10-64	
					3+93 ²			B1258	3226 Coolidge		5-18-64	
4+00	130.6	121.60	9.0		4+70 ²			B988	3220 Coolidge		3-5-64	
	129.8	121.80	8.0	4+98 ²								
5+00	129.8	121.80	8.0		5+30 ²			B1144	3212 Coolidge		4-23-64	
					5+93 ²			B643	3204 Coolidge		1-6-64	
6+00	129.0	122.00	7.0		7+25 ²			B623	3156 D Coolidge		12-31-63	
7+00	129.2	122.20	7.0		7+92 ²			B619	3146 Coolidge		12-31-63	
	128.40	122.40	6.0	7+98 ²								
0+00	127.9	119.11	8.8	0+00.0 Exist'g M.H.	0+90 ²	0+88 ²		C56585	1602 Harlan		7-7-76	
1+00	129.0	119.31	9.7		1+74 ²	1+72 ²		B5921	1603R Harlan		6-29-66	
2+00	129.0	119.51	9.5		2+14 ²	2+14 ²		C55375	1608 Harlan		5/11/76	
					2+62 ²	2+60 ²		C3109	1613 Harlan		5-16-67	
	129.0	119.65	10.3	2+68 ²				C3950	1623 Harlan		7-14-67	
3+00	129.2	119.71	9.5		2+78.3			C56586	1612 Harlan		7-7-76	
					3+51 ²	3+49 ²		C57394	1618 Harlan		8-25-76	
4+00	129.4	119.91	9.5		3+87 ²	3+87 ²		C6877	1633 Harlan		2-14-68	
					4+39 ²	4+37 ²		C61123	1622 Harlan		5-12-77	
5+00	129.1	120.11	9.0		4+75 ²	4+75 ²		C6739	1643 Harlan		2-5-68	
					5+28 ²	5+26 ²		C8013	1653 Harlan		4-25-68	
6+00	129.1	120.19	8.9	5+40 ²								
	128.8	120.31	8.5		6+11 ²	6+21 ²		C64003	1632 Harlan	1663 Harlan	11-15-77	5-12-69
7+00	128.3	120.51	7.8		7+17 ²	7+15 ²		C65186	1634 Harlan	1673 Harlan	3-1-78	12-16-70
8+00	127.5	120.73	6.8	7+98 ² 8" stub NW				C65929	1642 Harlan		4-18-78	

L.A.T. 182, SUB. 5, S. S. NO. 22

Y K