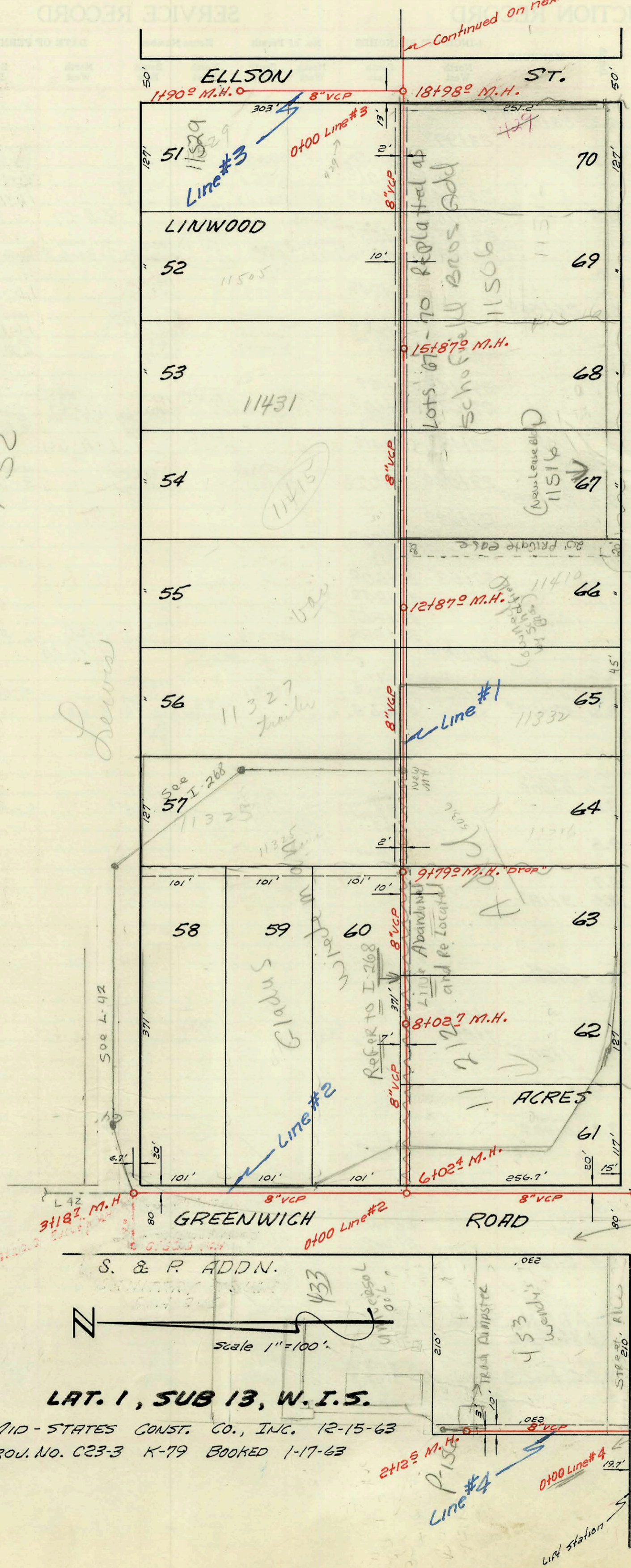


Continued on next Page

Plat 14-52

Lewis



20' Private Edg. Highway
Film 585
page 315

(KELLOGG)

54
PPV
V.P.M. & P.M.
G.L.S. & P.M.

NOTE 2-27-79
PROPOSED RD. IMPROVEMENT FOR KELLOGG & GREENWICH - CLEAR BEFORE ISSUING PERMITS

LAT. 1, SUB 13, W. I. S.

MID-STATES CONST. CO., INC. 12-15-63
PROJ. NO. C23-3 K-79 BOOKED 1-17-63

2+125 M.H.
Line #4
0+100 Exist. M.H. Begin Line #1
Line Station
10' CIP
Force Main
K183

