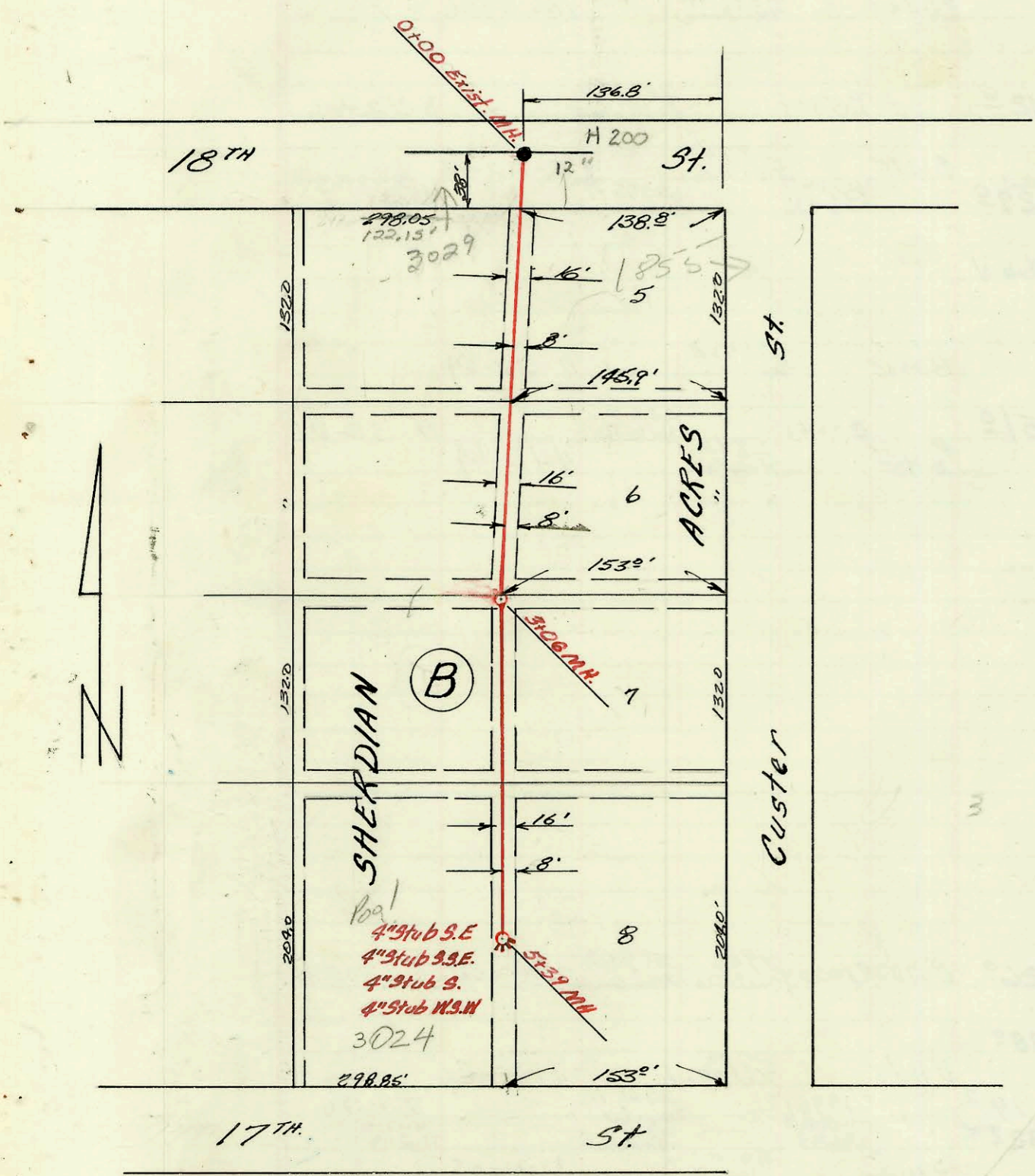


NOTE:  
See extension below.

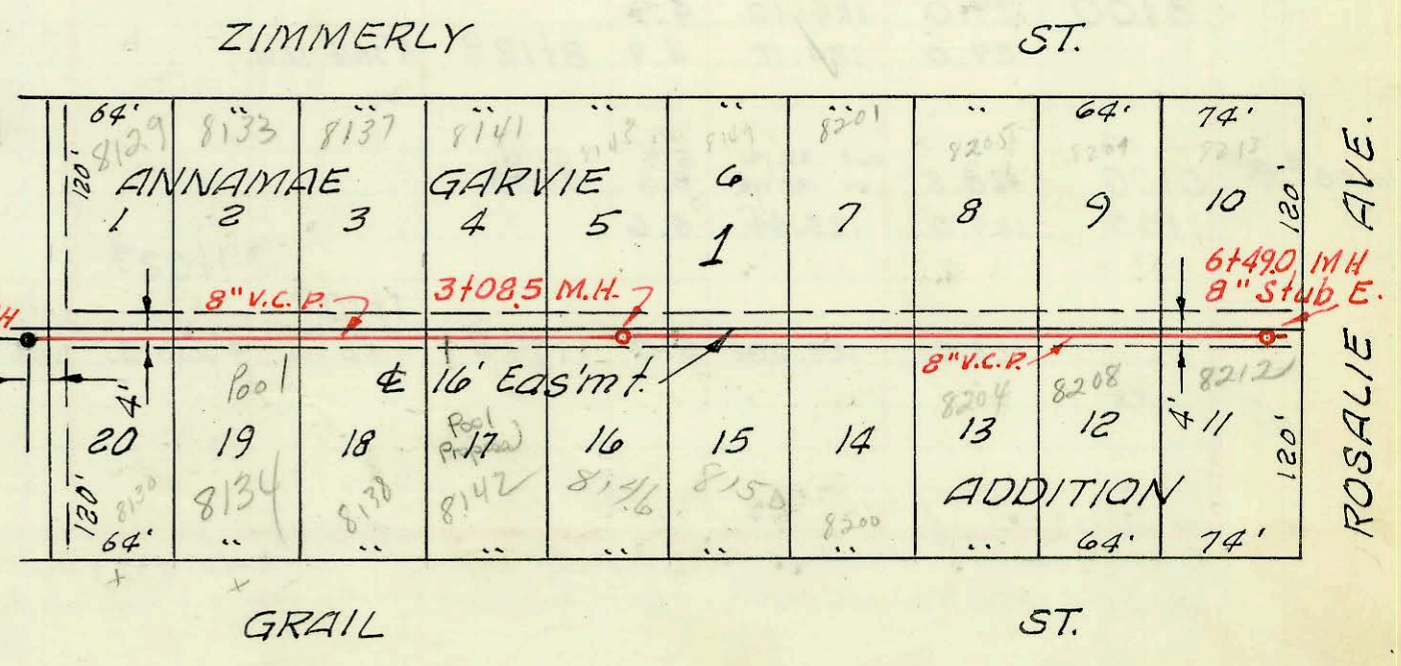
LRT. 2, SUB. 11, W.I.S.  
UTILITY CONTRACTORS, INC. 3-25-63  
PROJ. NO. C24-2 K-77 BOOKED 4-3-64

Scale 1" = 100'



LAT. 27 SUB 10 S.S. 22  
Mid-States Constr. Inc. 3-31-64  
Proj. C22-28 K76A Booked 4-23-64

1" = 100'



LAT. 5 SUB. 11, W. I. S.  
UTILITY CONTR. INC.  
PRIVATE CONTRACT, FEB. 1966  
3-2-66  
K-83

underground  
telephone cable in  
easement no. of sewer

CONSTRUCTION RECORD

SERVICE RECORD

STATION	ELEVATION		Depth	MANHOLE	4-INCH "Y" BRANCHES		No. of Permit		House Number		DATE OF PERMITS	
	Ground	Grade			North West	South East	North West	South East	North West	South East	North West	South East
LAT. 2, SUB. 11, W.I.S.												
0+00	145.7	136.00	9.7	0+00 <sup>EXIST.</sup>	0+93°	0+91°	B1477	B3359	1006 PAIGE	1006 PAIGE	4-13-64	6-4-64
1+00	148.2	138.25	10.0		1+49°	1+35°		B5080		8106		2-14-66
2+00	151.4	140.75	10.6		2+13°	2+01°		B4966		8110		1-7-66
3+00	153.9	143.25 in 143.75	10.6 10.1	3+00°	2+65°	2+63°	B1151	B3962	B2133	8109E 8113E	4-24-64	8-13-65 10-13-64
4+00	155.7	146.25	9.5		3+30°	3+28°		B4991		8118E		1-24-66
	156.8	148.75	8.1	4+99°	3+88°	3+86°	B1952	B4439	8121E	8121E	9-10-64	10-28-65
					4+55°	4+53°	B1152	4259	8125E	8126E	4-24-64	10-4-65
LAT. 21, SUB. 10, S.S. 22												
0+00	124.0	116.90	7.1	0+00 <sup>EXIST.</sup>	0+54°							
1+00	124.2	117.30	6.9		1+15°	1+41°	C47723		3029	W. 187H		12-10-74
2+00	123.7	117.70	6.0		1+92°	2+20°						
3+00	123.7	118.13	5.6	3+06°	2+46°	3+18°		B1140		1841		4-23-64
4+00	123.9	118.50	5.4		3+87°	3+71°		B1139		1827		4-23-64
5+00	123.6	118.90	4.7		4+62°	4+60°						
	124.0	119.06	4.9	5+39°	4" stub S.E.			B1138		1801		4-23-64
					4" stub S.S.E.			B1137		1801		4-23-64
					4" stub S			B1141		3024		4-23-64
					4" stub W.S.W.							
LAT. 5, SUB. 11, W. I. S.												
0+00	156.9	148.72	8.2	0+00.0 EXIST'G M.H.	0+20°	0+22°	B5468	C5712	8129	8130E	4-18-66	11-10-67
0+05.0	Req. project				0+83°	0+85°	B5784	C4753	8133E	8134E	6-9-66	9-8-67
1+00	158.5	150.72	7.8		1+44°	1+46°	B5947	C6116	8137E	8138E	7-5-66	12-13-67
2+00	161.3	152.72	8.6		2+15°	2+17°	B5948	C7057	8141E	8142E	7-5-66	2/27/68
					2+78°	2+80°	B6486	C8273	8145E	8146E	10-12-66	5-13-68
3+00	164.3	154.72	9.6		3+38°	3+40°		C781	8149E		11-8-66	
	164.6	154.92	9.7	3+08°	3+87°	4+06°		C8274	8153E	8200	3-1-67	12-11-67
4+00	166.9	155.64	11.3		4+69°	4+71°		C2085	C6076	8201E	3-22-67	6-14-67
5+00	168.7	156.44	12.3		5+34°	5+36°		C2347	C3522	8205E	3-22-67	6-14-67
					5+92°	5+94°		C3227	C13193	8209E	5-23-67	3-19-69
6+00	167.8	157.24	10.6		8" stub E.			C4219	C14246	8213E	8-3-67	5-27-69
	167.1	157.64	9.5	6+49°						8212		

" 02865-8117 E Zimmerly - 3-5-65 Bradford Pkg. - tap (3+31.5)