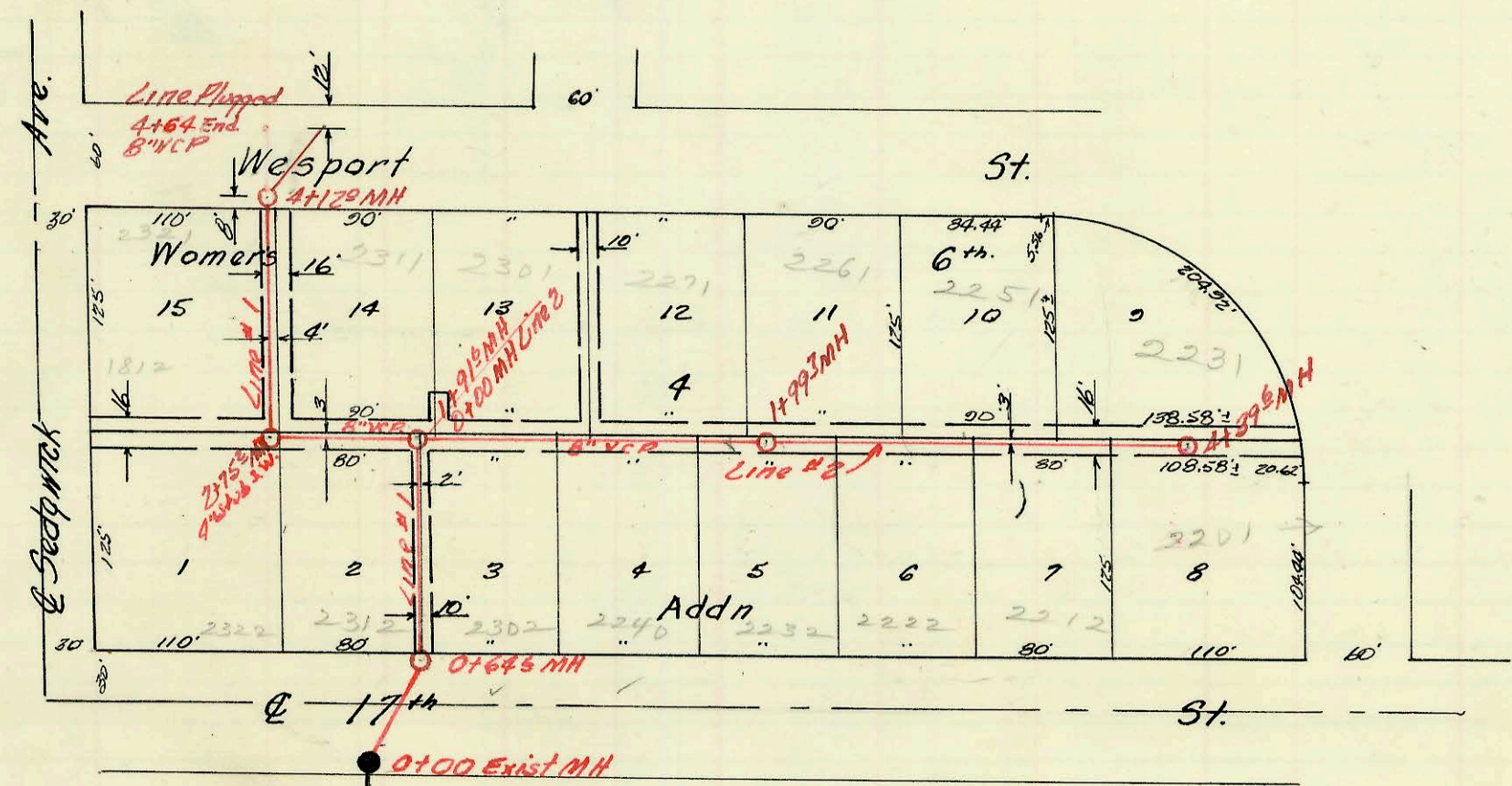
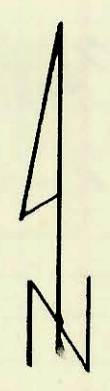


LAT. 1 SUB. 17 S.S. 22  
 Mid States Constr. 4-14-64  
 Proj. C22-35, K-82, Booked 6-1-64

Scale 1" = 150'



Scale 1" = 100'

LAT. 24, SUB. 13, S.S. 22  
 Mid States Constr. 4-21-64  
 Proj. C23-119, K-75 Booked 6-1-64

**CONSTRUCTION RECORD**

**SERVICE RECORD**

STATION	ELEVATION		Depth	MANHOLE	4-INCH "Y" BRANCHES		No. of Permit		House Number		DATE OF PERMITS	
	Ground	Grade			North West	South East	North West	South East	North West	South East	North West	South East
LAT. 1, SUB. 17, S3. 22												
Line # 1												
0+00	126.4	118.33	8.1	0+00 Exist M.H.								
1+00	126.8	118.53	8.3	0+26 <sup>±</sup>	0+26 <sup>±</sup>	B3001		2800 N. Athenian			4/1/65	
2+00	126.6	118.73	7.9	1+34 <sup>±</sup>	1+32 <sup>±</sup>	C16008	B1649	2808 N. Athenian	2809 N. Clarence		9-23-69	7-14-64
3+00	126.9	118.89	8.0	2+39 <sup>±</sup>	2+22.5	B3186	B4744	2816 N. Athenian	2817 N. Clarence		3-30-65	12-10-65
4+00	126.8	118.93	7.9	2+78 <sup>±</sup>	2+37 <sup>±</sup>							
5+00	127.4	119.33	8.1	3+22 <sup>±</sup>	3+20 <sup>±</sup>	B5613	B1918	2824 N. Athenian	2827 N. Clarence		5-12-66	9-8-64
6+00	127.3	119.45	7.8	4+26 <sup>±</sup>	4+28 <sup>±</sup>	C17789	B3134	2832 N. Athenian	2835 N. Clarence			3-26-65
7+00	127.4	119.53	7.9	5+21 <sup>±</sup>	5+19 <sup>±</sup>	B1395	B1312	2840 N. Athenian	2841 N. Clarence		11-2-98	12-16-65
8+00	127.3	119.73	7.6	6+21 <sup>±</sup>	6+22 <sup>±</sup>	B1549	B1969	2901 N. Athenian	2901 N. Clarence		6-22-64	9-22-67
9+00	127.4	119.93	7.5	7+32 <sup>±</sup>	7+34 <sup>±</sup>	B4520	B2176	2904 N. Athenian	2909 N. Clarence		11-11-65	3-11-65
10+00	127.4	120.01	7.4	8+23 <sup>±</sup>	8+21 <sup>±</sup>	B1396	B4697	2912 N. Athenian	2915 N. Clarence		6-12-64	12-2-65
11+00	127.0	120.13	6.9	9+25 <sup>±</sup>	9+23 <sup>±</sup>	B1397		2920 N. Athenian			6-12-64	
12+00	127.2	120.33	6.9	10+24 <sup>±</sup>	10+26 <sup>±</sup>	#1311	B2067	2980 N. Athenian	2935 N. Clarence		5-27-64	10-1-64
13+00	128.2	120.53	7.7	11+75 <sup>±</sup>		B1525		2111 W. 29th			6-17-64	
14+00	128.0	120.76	7.4	12+23 <sup>±</sup>	12+25 <sup>±</sup>	B2225		2101 W. 29th			10-30-64	
15+00	128.0	120.56	7.4	12+45 <sup>±</sup>		B2046	B2195	2945 W. 29th	2939 N. Clarence		2-23-61	12-32-60
LINE # 2												
0+00	128.0	In 120.76 Out 120.56	7.4	0+00 Exist M.H. 11+52 Line # 1								
1+00	128.0	121.16	6.8	0+17 <sup>±</sup>		#1310		2133 W. 29th			5-27-64	
2+00	127.8	121.24	6.6	1+04 <sup>±</sup>		B3947		2131 W. 29th			7-14-67	
LAT. 24 SUB. 13, S5 # 22												
Line # 1												
0+00	123.0	114.27	8.7	0+00 Exist M.H.								
1+00	124.0	In 114.50 Out 114.90	9.6	0+64 <sup>±</sup>								
2+00	124.3	114.57	9.7	1+42 <sup>±</sup>	1+40 <sup>±</sup>	B2505		2313 W. 29th			12-15-64	
3+00	124.0	In 114.85 Out 114.75	9.2	1+91 <sup>±</sup>								
4+00	123.9	114.87	9.0	2+20 <sup>±</sup>	2+22 <sup>±</sup>							
5+00	122.8	In 115.12 Out 115.02	7.8	2+75 <sup>±</sup>	4" Stub SW	B2717		2320 W. 29th			1-22-65	
6+00	123.0	115.17	7.8	3+26 <sup>±</sup>	3+14 <sup>±</sup>	B6314	C2477	2321 W. 29th	2311 Westport		9-8-66	3-30-67
7+00	123.8	115.37	7.4	3+45 <sup>±</sup>	3+43 <sup>±</sup>							
8+00	123.9	In 115.49 Out 115.39	8.5	4+12 <sup>±</sup>								
9+00	123.9	115.57	8.3	End 8" VCP Line Plugged								
LINE # 2												
0+00	124.0	114.85	9.1	0+00 Exist M.H. = 11+91 <sup>±</sup> Line # 1								
1+00	121.8	115.36	6.4	0+40 <sup>±</sup>	0+23 <sup>±</sup>	B3527	B4054	2301 Westport	2302 W. 17th		6-2-65	9-1-65
2+00	121.7	115.75	5.9	1+29 <sup>±</sup>	1+02 <sup>±</sup>	B2494	B4053	2271 Westport	2240 W. 17th		12-14-64	9-1-65
3+00	121.7	115.76	5.9	1+77 <sup>±</sup>		B6004			2222 W. 17th		7-13-66	
4+00	121.2	116.16	5.0	Reynolds (2+15) Tap		B6003			2222 W. 17th		7-13-66	
5+00	121.2	116.16	5.0	2+18 <sup>±</sup>	2+61 <sup>±</sup>	B1692		2261 Westport			7-23-64	
6+00	120.4	116.56	3.8	3+07 <sup>±</sup>	3+39 <sup>±</sup>	B4444	B1217	2251 Westport			10-29-65	12-15-66
7+00	120.9	116.72	4.2	3+86 <sup>±</sup>	3+86 <sup>±</sup>	B1321	C1219	2231 Westport	2222 W. 17th		6-1-64	1-6-67
8+00	120.9	116.72	4.2	4+28 <sup>±</sup>		B1320		2201 Westport			6-1-64	