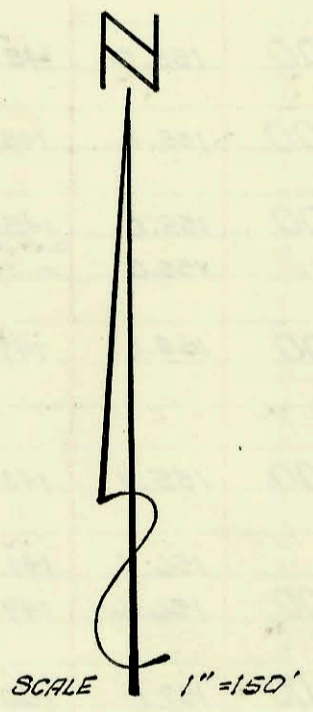
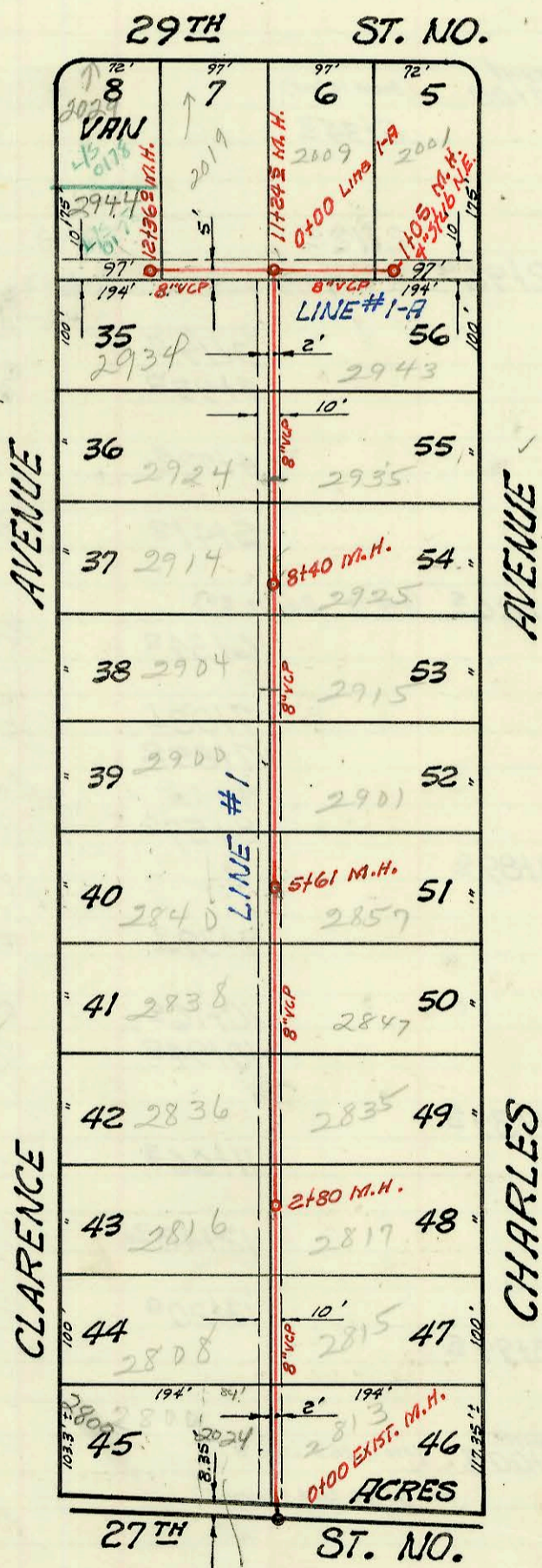


LAT. 19, SUB. 17, S. S. 22  
 MID-STATES CONST. CO., INC. 6-9-64  
 PROJ. NO. C23-46 K-84 BOOKED 6-30-64



LAT. 4, SUB. 17, S. S. 22  
 MID-STATES CONST. CO., INC. 6-2-64  
 PROJ. NO. C22-47 K-76A BOOKED 6-30-64

See  
 K-81

CONSTRUCTION RECORD						SERVICE RECORD						
STATION	ELEVATION		Depth	MANHOLE	4-INCH "Y" BRANCHES		No. of Permit		House Number		DATE OF PERMITS	
	Ground	Grade			North West	South East	North West	South East	North West	South East	North West	South East
Lat. 19, Sub. 17, S.S. 22												
0+00	127.9	120.80 out 121.01 in 121.11	7.1 7.9 7.8	Exist. 0+00 <sup>o</sup> 0+52 <sup>o</sup>								
1+00	128.6	121.30	7.3		0+85	0+90 <sup>o</sup>	B5107	B2046	2520 W. 2801 27th St. Halstead	2-17-66	9-30-64	
2+00	128.8	121.7	7.1		1+36 <sup>o</sup>	1+53 <sup>o</sup>						
3+00	129.0 129.3	122.2 122.4	6.8 6.9	2+40 <sup>o</sup> 3+50 <sup>o</sup>	4 1/2" sub N.E. 2+69 <sup>o</sup>	4 1/2" sub S.W.	#2051-0334 B1582	B3094 B1583	2535 2830 R. Halstead Richmond	12/27/64 6/29/64	4-13-65	
					4 1/2" sub N.W.	4 1/2" sub S.W.	B3095	B1583	2820 W. 2538 W. Richmond 27th St. N.	4-13-65	6/29/64	
LINE #1												
Lat. 4, Sub 17, S.S. 22												
0+00	126.56	118.01	8.6 8.7	Exist. 0+00 <sup>o</sup>	0+86.2 <sup>o</sup> 0+41 <sup>o</sup>	0+39 <sup>o</sup>	13278	11217	2024 63746		4-11-85	
1+00	127.1	118.21	8.9		1+48 <sup>o</sup>	1+46 <sup>o</sup>	#1568	#1572	2808 N. 2815 N. Clarence Charles	6-25-64	6-25-64	
2+00	126.9	118.41	8.5		2+49 <sup>o</sup>	2+47 <sup>o</sup>	B1646	B1571	2816 N. 2817 N. Clarence Charles	7-14-64	6-25-64	
3+00	127.3 127.3	118.57 118.61	8.7 8.7	2+80 <sup>o</sup>	3+44 <sup>o</sup>	3+42 <sup>o</sup>	B5318	C19437	2836 N. 2835 N. Clarence Charles	3-24-66	5-27-70	
4+00	127.7	118.81	8.9		4+30 <sup>o</sup>	4+32 <sup>o</sup>	B1949		2838 N. Clarence	9-10-64		
5+00	127.8	119.01	8.8		4+85.1 5+44 <sup>o</sup>			C28523	2847 N. Clarence		10-15-71	
	127.3	119.13	8.2	5+61 <sup>o</sup>			B1662		2840 N. Clarence	7-15-64		
6+00	127.1	119.21	7.9			5+65 <sup>o</sup>		#B1570	2857 N. Charles		6-25-64	
					6+154 <sup>o</sup>	6+43 <sup>o</sup>		#B1569	2901 N. Charles		6-25-64	
7+00	127.6	119.41	8.2				C6260		2900 N. Clarence	12/27/67		
8+00	127.6 128.0	119.61 119.69	8.0 8.3	8+40 <sup>o</sup>	7+29 <sup>o</sup>	7+27 <sup>o</sup>	C637	B4672	2904 N. 2915 N. Clarence Charles	10-28-66	12-1-65	
9+00	127.9	119.81	8.1		8+67 <sup>o</sup>	8+69 <sup>o</sup>	C11083	B2004	2914 N. 2925 N. Clarence CHARLES	10-25-68	9-22-64	
10+00	128.0	120.01	8.0		9+37 <sup>o</sup>	9+35 <sup>o</sup>	B1661	B3768	2934 N. 2935 N. Clarence Charles	7-15-64	7-8-65	
11+00	127.8 127.7	120.21 out 120.26 in 120.34	7.6 7.4 7.3	11+24 <sup>o</sup>								
12+00	127.9	120.66	7.2		11+31 <sup>o</sup>		#B1586		2919 W. 2924 N. Clarence		6-24-64	
						12+07 <sup>o</sup>		B1604	2934 N. Clarence		7-2-64	
	128.1	120.80	7.3	12+36 <sup>o</sup>	12+26 <sup>o</sup>	12+30 <sup>o</sup>	#B1562	C4347	2929 W. 2944 N. 2944 N. Clarence		6-24-64 9-20-73	
LINE #1-A												
0+00	127.5	120.34	7.2	Exist. 0+00 <sup>o</sup>	0+38	0+95 <sup>o</sup>	B5160	B2229	2909 W. 2914 N. Clarence	3-1-66		
1+00	128.1 128.1	120.76 120.78	7.3 7.3	1+05 <sup>o</sup>	4 1/2" sub N.E.		#2007-01101 B1831		2943 N. Charles 2001 C10 W. 2975	10-30-64 6-22-07 8-25-64		