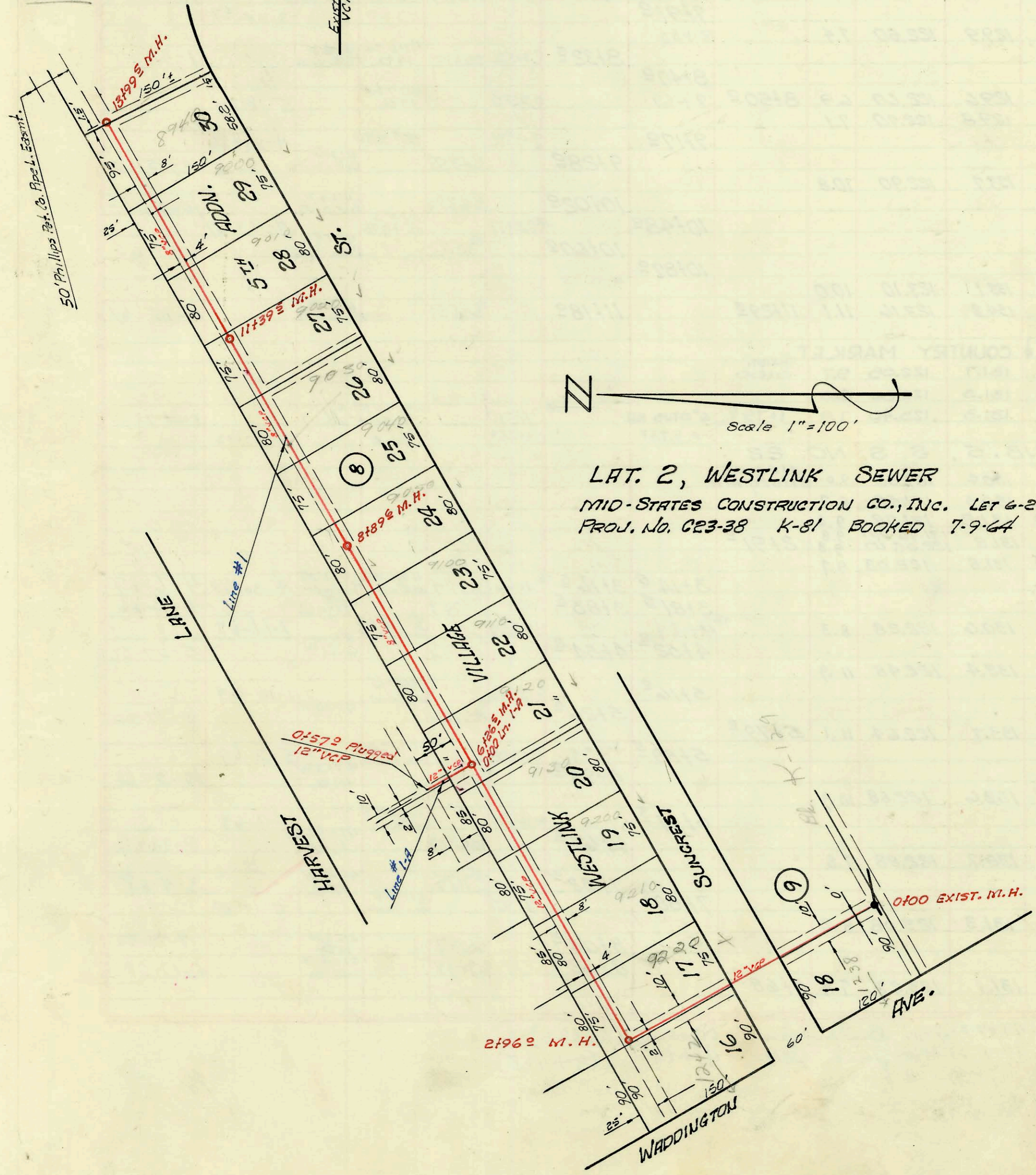


LAT. 177, SUB. 5, S.S. 22

UTILITY CONTRACTORS, INC. Let June 23-64
PROJ. No. C23-109 K-82 BOOKED 7-9-64

TYLER RD



LAT. 2, WESTLINK SEWER

MID-STATES CONSTRUCTION CO., INC. Let 6-2-64
PROJ. No. C23-38 K-81 BOOKED 7-9-64

CONSTRUCTION RECORD						SERVICE RECORD						
STATION	ELEVATION		Depth	MANHOLE	4-INCH "Y" BRANCHES		No. of Permit		House Number		DATE OF PERMITS	
	Ground	Grade			North West	South East	North West	South East	North West	South East	North West	South East
Lat. 177 0+00	Sub. 5, 5.5.22 122.9	115.50	7.4	0+00 Exist.								
1+00	123.4	115.90	7.5		0+44 [±]	0+42 [±]	B1719	B5673	813 N. C Dougherty	7-30-64	6-18-63	4-29-63
	123.7	116.18	7.5	1+71 [±]	0+94 [±]	0+92 [±]	C66558		854 N. Young	5-24-78		
2+00	125.2	116.30	8.9		1+61 [±]		C67249		860 N. Young	7-7-78		
	125.9	116.50	9.4	2+51 [±]	2+23.1	1+86 [±]			819 N. Dougherty		4-29-66	
3+00	126.0	116.70	9.3		2+33 [±]	2+31 [±]	C68904		872 N. Young	10-20-78		
					3+06 [±]	3+04 [±]	C17530	C16591	902 N. Young	1-2-90	11-4-69	
4+00	126.9	117.10	9.8		3+46 [±]	3+59 [±]			831 N. Dougherty		5-18-67	9-12-65
					3+90 [±]	4+02 [±]	C18458	C13270	910 N. Young	3-23-70	3-26-69	
	124.7	117.42	7.3	4+79 [±]	4+04 [±]	4+02 [±]	C1529		835 N. Dougherty	1-2-70		
					4+62 [±]	4+60 [±]	C56772	C28812	841 N. Dougherty	7-19-76	11-1-71	
Line #1 LAT. 2 WESTLINK SEWER 0+00	154.5	144.10	10.4	0+00 Exist.	(Begin 12" VCP)	0+34 [±]						
1+00	154.9	144.32	10.6									
2+00	155.1	144.64	10.6									
	154.8	out 144.74 in 144.86	10.1	2+96 [±]		2+12 [±]						
3+00	154.8	144.88	10.0			2+97.8	B4773	#C3925	1242 Dougherty	12-10-65	4-27-60	7-13-67
									920 Suncrest		9-7-65	3-11-65
4+00	155.0	145.08	9.9						930 Suncrest		8-3-65	
5+00	155.1	145.30	9.8						934 Suncrest			
6+00	155.0	145.52 out 145.58 in 147.09	9.5 9.4 8.0	6+26 [±]	(End 12" Begin 8")				9130 Suncrest		1-11-66	
7+00	155.1	147.66	7.4						9120 Suncrest		4-26-67	
8+00	155.9	148.56	7.3						9100 Suncrest		6-7-67	
	156.4	149.37	7.0	8+89 [±]					9150 Suncrest		2-17-66	
9+00	156.6	149.46	7.1									
10+00	157.1	150.36	6.7						9040 Suncrest		3-6-68	
11+00	159.1	151.26	7.8						9030 Suncrest		9-22-65	
	159.7	151.62	8.1	11+39 [±]					9020 Suncrest		9-22-65	
12+00	160.8	152.16	8.6									
13+00	162.0	153.06	8.9						9000 Suncrest		3-1-65	
	162.6	153.96	8.6	13+99 [±]					8940 Suncrest		1-25-66	
Line #1-A 12" VCP 0+00	155.0	out 145.58 in 145.67	9.4 9.3	0+00 [±]	(Sta. 6126 [±] Line #1)							
0+57	155.0	145.81	9.2		(0+57 Line Plugged)							

B 3160 - 9010 Suncrest - Kennedy Alley - 3-29-65 - Top (11+59.5)
 B 5782 - 9110 Suncrest - Doolittle Alley - 6-8-66 top (7+25.5)
 C 13295 - 839 Dougherty - Linnegan Alley - 3-26-69 - Top (4+22.6)
 C 28812 - 241 Dougherty - Al Manning - 11-1-71 - Top ()