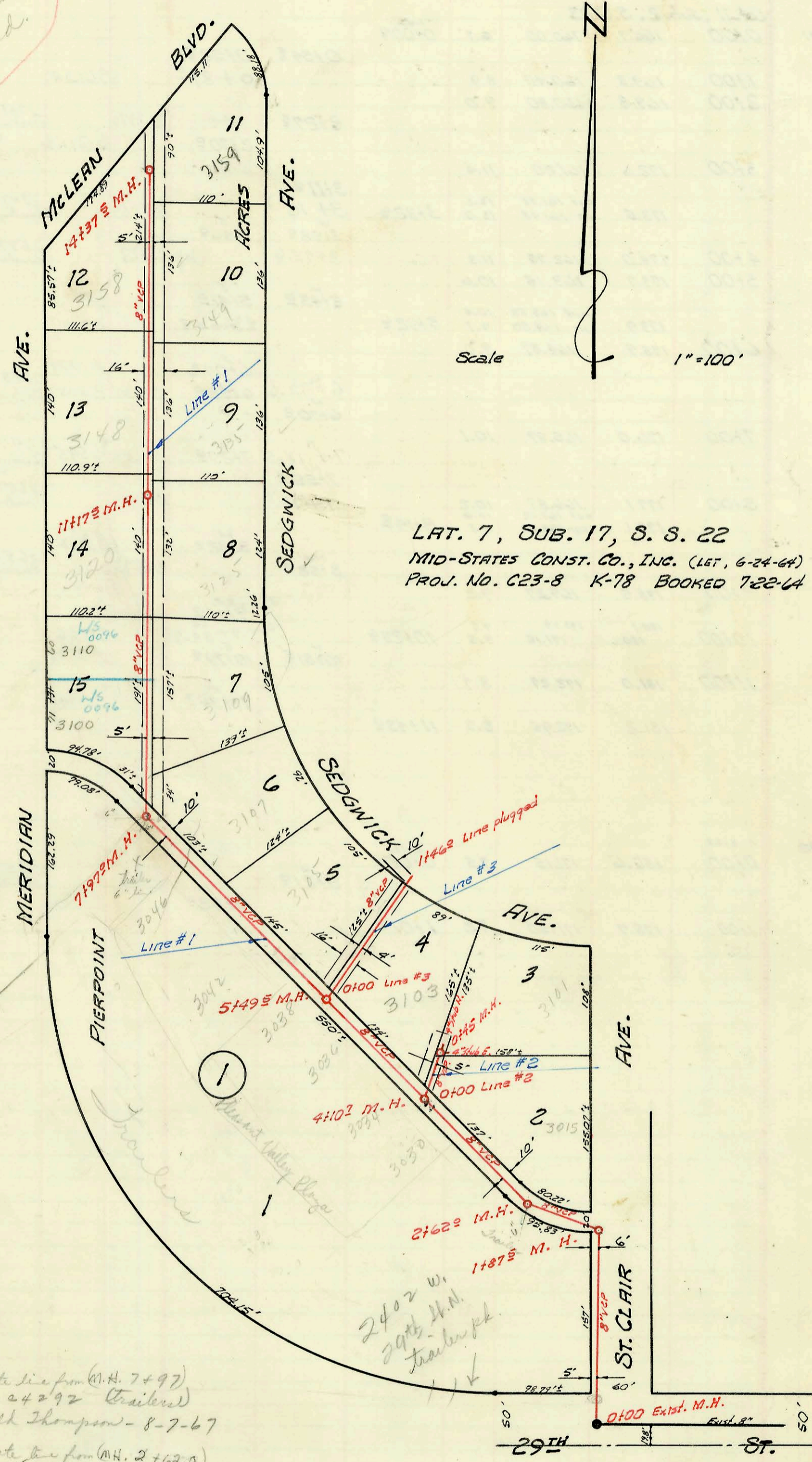


Call through ~~Public~~ to check size before coming dist. in case no eye is found.



LAT. 7, SUB. 17, S. S. 22
MID-STATES CONST. CO., INC. (LET. 6-24-64)
PROJ. NO. C23-8 K-78 BOOKED 722-64

- (15) private line connection on 6" private line from (M.H. 7497) permits # C 4276, C 4279 thru C 4292 (trailers) 2402 W. 29th St. N. - Gerald Thompson - 8-7-67
- (10) private line connection on 6" private line from (M.H. 2462.0) permits # C 4293 thru C 4302 (trailers) 2402 W. 29th St. N. - Gerald Thompson - 8-7-67

CONSTRUCTION RECORD

SERVICE RECORD

Line #1

STATION	ELEVATION		Depth	MANHOLE	4-INCH "Y" BRANCHES		No. of Permit		House Number		DATE OF PERMITS	
	Ground	Grade			North West	South East	North West	South East	North West	South East	North West	South East
LAT. 7, SUB. 17, S. 5. 22												
0+00	129.1	119.80	9.3	Exist. 0+00 ²								
1+00	128.1	120.00	8.1									
	128.3	out 120.18 in 120.28	8.1 8.0	1+87 ²								
2+00	128.4	120.30	8.1									
	128.1	out 120.43 in 120.53	7.7 7.6	2+62 ²	2+10 ²	2+12 ²						
					2+74 ²	2+76 ²	6" TAP M.H. C4278 C17231		3015 N. A. Cain	2402 W. 29 th N.	9-12-79	8-7-67
3+00	128.3	120.60	7.7									
						3+39 ²						
4+00	129.2	120.80	8.4									
	129.1	120.82	8.3	4+10 ²								
					4+49 ²	4+41 ²						
						4+51 ²						
						4+72 ²						
5+00	129.5	121.00	8.5									
						5+03 ²						
						5+10 ²						
	129.5	121.10	8.4	5+49 ²	← Tap	5+82 ²	C4624		3030-40 N. Meridian		8-28-67	
						5+90 ²						
6+00	129.5	121.20	8.3									
7+00	130.2	121.40	8.8									
						7+40 ²						
						7+42 ²						
						7+47 ²						
						7+81 ²						
						7+97 ²						
8+00	129.3	out 121.60 in 121.70	7.7 7.6									
	129.3	121.70	7.6									
						8+40 ²						
						8+86 ²						
9+00	129.5	121.90	7.6									
						9+60 ²						
10+00	129.2	122.10	7.1									
						10+20 ²						
						10+43 ²						
11+00	129.3	122.30	7.0									
	129.4	122.34	7.1	11+17 ²								
						11+65 ²						
						11+63 ²						
						12+11 ²						
12+00	129.3	122.66	6.6									
13+00	129.2	123.06	6.1									
						13+07 ²						
						13+05 ²						
14+00	129.1	123.46	5.6									
						14+30 ²						
	129.2	123.62	5.6	14+37 ²								
Line #2												
0+00	129.1	120.92	8.2	Exist. 0+00 ²								
	128.8	121.10	7.7	0+45 ²	4 3/4" Sub N.	4 3/4" Sub E.	B2021 B2028		3103 N. Sedgwick	3101 N. Sedgwick	9-25-64	9-28-64
Line #3												
0+00	129.5	121.20	8.3	Exist. 0+00 ²								
1+00	129.0	121.40	7.6									
	128.80	121.40		No M.H. 1+46 ² Plugged					3105 N. Sedgwick		7-21-64	

B2098 - Top 3148 N. Meridian - Vern Lippold - 10-16-64 (11+64.4)