

Scale 1"=100'  
24" 0+00 EXIST. M.H.  
50' Siphon H 186  
2-12"

MERIDIAN AVE.

SUB. 19, S.S. 22  
UTILITY CONTRACTORS, INC. 7-7-64  
C24-10, K-71, BOOKED 8-17-64

**CAUTION**  
**UNDERGROUND UTILITIES**  
Please check with K G & E or  
Southwestern Bell  
Telephone Co. for Location

any connection  
would require fee for sub-main  
any connection fee for sub-main  
would require Asses for City Eng's office  
in lieu of Asses for City Eng's office

200' UTILITY EASMT.

0+265 M.H.

0+530 M.H.

0+800 M.H.

END SUBMAIN 8+55'  
BEGIN LATERAL 1

BULLINGER

DRIVE

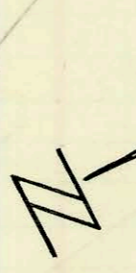
HYACINTH

RIVER PARK

ARKANSAS

RIVER

LAT. 1, SUB. 19, S.S. 22  
UTILITY CONTRACTORS, INC. 7-7-64  
C24-11, K-71, BOOKED 8-18-64



Scale 1"=100'

RIVER

ST.

21 ST

RIVER PARK

21 ST

ARKANSAS

PARK

DRIVE

LINE NO. 1

RIVER

PARK

50' M.H.

Condition

COURT

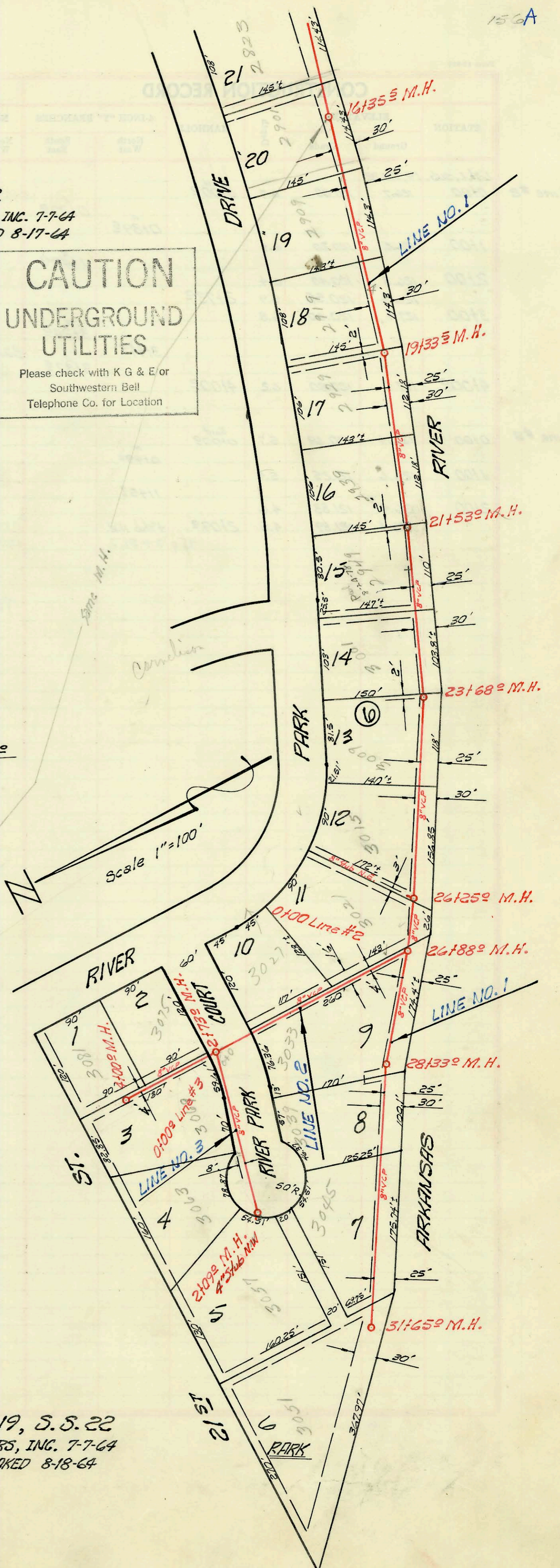
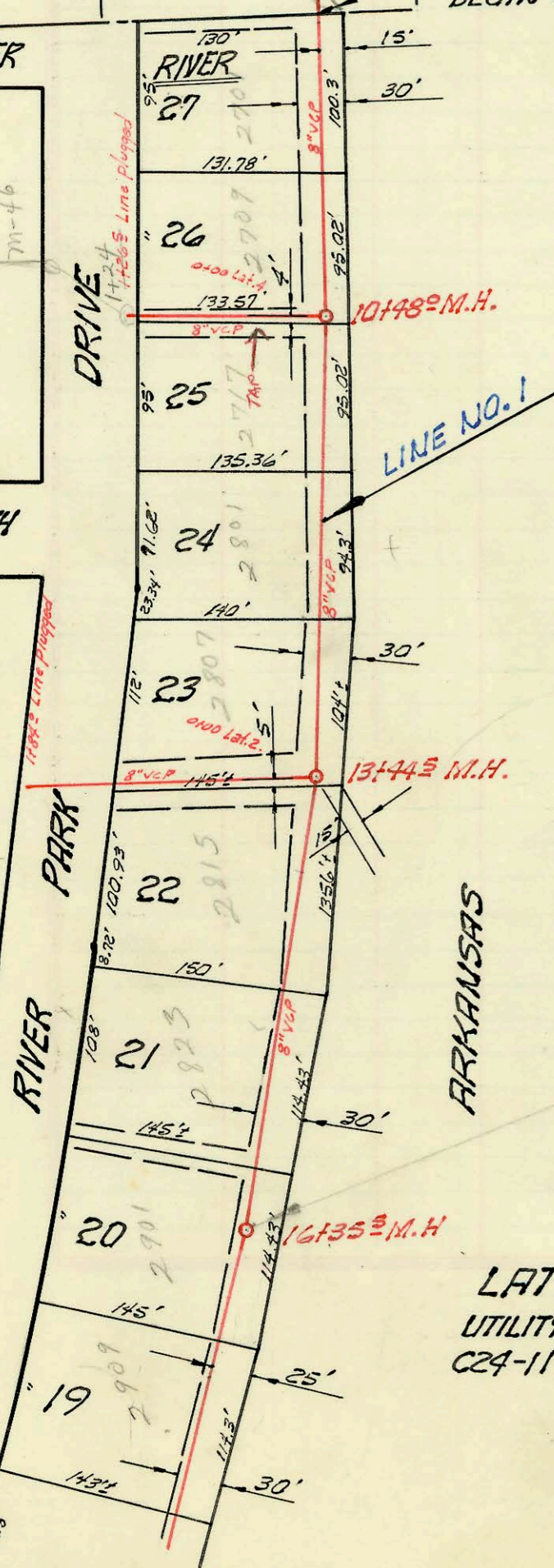
RIVER PARK

21 ST

LINE NO. 1

LINE NO. 2

LINE NO. 3



CONSTRUCTION RECORD						SERVICE RECORD						
STATION	ELEVATION		Depth	MANHOLE	4-INCH "Y" BRANCHES		No. of Permit		House Number		DATE OF PERMITS	
	Ground	Grade			North West	South East	North West	South East	North West	South East	North West	South East
<i>Sub. 19, S.S. 22</i>												
0+00	122.90	114.50	8.4	0+00 <sup>Exist.</sup>								
1+00	120.6	114.70	5.9									
2+00	121.6	114.90	6.7									
	122.9	115.03	7.9	2+65 <sup>±</sup>								
3+00	123.1	115.10	8.0									
4+00	123.0	115.30	9.7									
5+00	123.3	115.50	7.8									
	124.1	115.56	8.5	5+30 <sup>±</sup>								
6+00	123.0	115.70	7.3									
7+00	123.4	115.90	7.5									
8+00	123.6	116.10	7.5	8+00 <sup>±</sup>								
					8+78 <sup>±</sup>			C4982	2701	River Park Dr.	6-18-75	
9+00	125.3	116.30	9.0									
					9+72 <sup>±</sup>							
10+00	125.6	116.50	9.1		10+04.2			C5367	2709	River Park Dr.	2-9-76	
	125.5	out 116.60 in 116.70	8.9 8.8	10+48 <sup>±</sup>								
					10+73 <sup>±</sup>							
11+00	125.6	116.70	8.9					#6124	2801	River Park Dr.	12-13-67	
					11+69 <sup>±</sup>							
12+00	125.5	116.90	8.6									
					12+73 <sup>±</sup>							
13+00	126.0	117.10	8.9		13+12.5			#C12005	2807	River Park Dr.	12-18-68	
	125.2	117.19	7.3	13+44 <sup>±</sup>								
					13+79 <sup>±</sup>							
14+00	125.4	117.27	8.1		14+03.5			top #C4622	2815	River Park Dr.	10-23-67	
					14+45 <sup>±</sup>							
15+00	125.4	117.47	7.9									
					15+18 <sup>±</sup>							
16+00	125.6	117.67	7.9		15+83.2			C3453	2823	River Park Dr.	6-7-67	
					16+24 <sup>±</sup>							
	126.0	117.74	8.3	16+35 <sup>±</sup>	16+56.5			C1231	2901	River Park Dr.	12-15-66	
17+00	126.0	117.87	8.1									
					17+43 <sup>±</sup>			B5595	2909	River Park Dr.	5-10-66	
18+00	125.4	118.07	7.3					B	2919	River Park Dr.	11-17-65	
					18+57 <sup>±</sup>			4557				
19+00	125.5	118.27	7.2									
	125.5	118.34	7.2	19+33 <sup>±</sup>								
					19+57 <sup>±</sup>			C2994	2929	River Park Dr.	5-8-67	
					19+99 <sup>±</sup>							
20+00	125.4	118.47	6.9									
					20+81 <sup>±</sup>			#B4431	2939	River Park Dr.	10-28-65	
21+00	126.1	118.67	7.4									
	126.2	118.78	7.4	21+53 <sup>±</sup>								
					top 22+03							
22+00	126.2	118.87	7.3		21+83 <sup>±</sup>			C66782	2949	River Park Dr.	6-12-78	
					22+83 <sup>±</sup>							
23+00	126.7	119.07	7.6									
	126.6	119.21	7.4	23+68 <sup>±</sup>				C1064	3001	River Park Dr.	12-5-66	
					23+93 <sup>±</sup>			#C9827	3009	River Park Dr.	7-29-68	
24+00	126.8	119.27	7.5									
					24+64 <sup>±</sup>							
25+00	126.8	119.47	7.3									
					25+33 <sup>±</sup>			B2842	3015	River Park Dr.	2-15-65	
26+00	126.5	119.67	6.8									
	126.5	119.72	6.8	26+25 <sup>±</sup>								
					8" stub N.E.							
					26+40 <sup>±</sup>			B3188	3021	River Park Dr.	3-31-65	
27+00	126.7	119.85	6.9		26+88 <sup>±</sup>							
	126.7	119.87	6.9									
					27+31 <sup>±</sup>							
28+00	125.0	120.07	4.9									
					28+33 <sup>±</sup>							
					28+65 <sup>±</sup>			#B3183	3039	River Park Dr.	3-30-65	
29+00	126.6	120.40	6.2									
					29+56 <sup>±</sup>			B1914	3045	River Park Dr.	9-4-64	
30+00	126.8	120.90	5.9									
					30+36 <sup>±</sup>			B1915	3045	River Park Dr.	9-4-64	
31+00	125.9	121.40	4.5									
					31+53 <sup>±</sup>			58899	3051	River Park Dr.	12-1-76	
	126.4	121.73	4.7	31+65 <sup>±</sup>								

Begin Lat. 1,  
sub. 19, S.S. 22  
3 sta. 8+55  
Line #1

see next page for Line #2 & #3  
#B1916 3033 River Park Dr. - Justice Alley - 10-21-64 top (1+68) 2  
#C21391 top 2717 River Park Dr. - Justice Alley - 10-19-70 top (4+2 N. of M.H. 10+48)  
C56270 top 2931 River Park Dr. - Superior - 7-23-76 (21+42 E of man. 21.53)