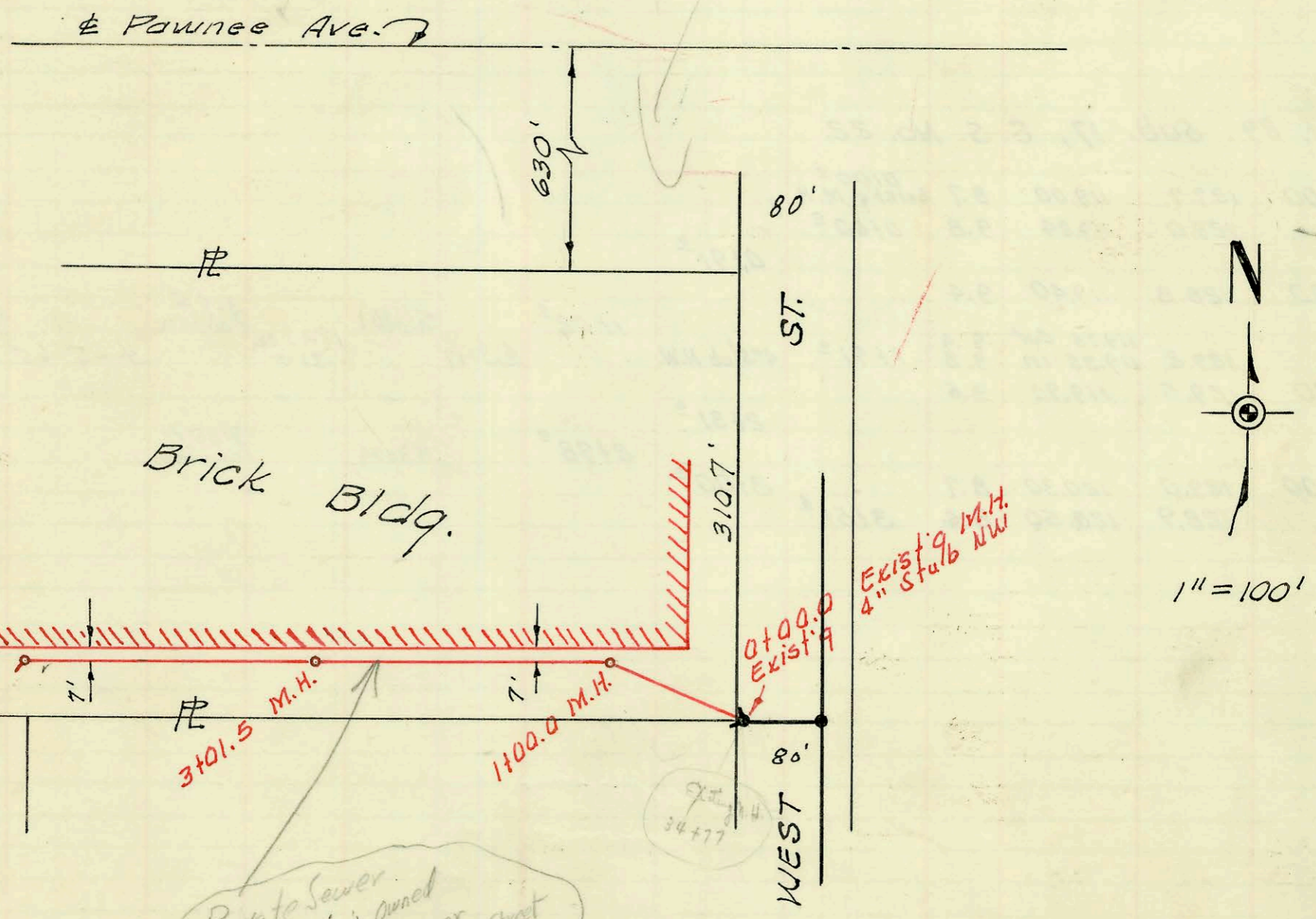


LAT. 1, SUB. 20, S.S. 22  
 W. B. CARTER CONSTRUCTION CO. INC. 8-25-64  
 PROJ. NO. G24-9, K-75, BOOKED 9-30-64  
 Micro Film Record shows the project as clay.

K



Private Sewer  
 Maintained & Owned  
 by property owner  
 at 2501 S. West Street

LAT. 2, SUB. 20, S.S. NO. 22  
 UTILITY CONTRACTORS INC.  
 PRIVATE CONTRACT. BK NO. K-72  
 12-22-65

CONSTRUCTION RECORD

SERVICE RECORD

STATION	ELEVATION		Depth	MANHOLE	4-INCH "Y" BRANCHES		No. of Permit		House Number		DATE OF PERMITS	
	Ground	Grade			North West	South East	North West	South East	North West	South East	North West	South East
Line #1 - Continued - Lat. 1, Sub. 20, S.S. 22												
29+00	105.5	99.57	5.9			29+06 <sup>E</sup> 29+56 <sup>E</sup>						
30+00	105.7	99.77	5.9			30+01 <sup>E</sup> 30+58 <sup>E</sup>						
31+00	105.4 105.5	99.97 out 99.99 in 100.09	5.4 5.5 5.4	31+09 <sup>E</sup>		31+63 <sup>E</sup>						
32+00	105.7	100.17	5.5			32+06 <sup>E</sup> 32+57 <sup>E</sup>	B 4636		2540 S West		11-23-65	
33+00	105.5	100.37	5.1			33+14 <sup>E</sup> 33+56 <sup>E</sup>						
34+00	104.8 105.0 105.4	100.57 out 100.62 in 100.72 100.83	4.2 4.4 4.3 4.6 3.6 deep	34+21 <sup>E</sup> 34+77 <sup>E</sup>	4" stub N.W. 4" stub S.W.		# 52048		2533 S, West St.		9-30-64	
Line #2	0+00	106.6 104.9	out 99.53 in 99.63 99.84	7.1 7.0 5.1	Exist. 0+00 <sup>E</sup> 0+53 <sup>E</sup>	6" TAP - CORE DRILLED 4" stub W. 6" PK 40		96-103389	2437 S. West		7-1-66	
Line #3	0+00 1+00	105.5 107.0	out 99.99 in 100.09 100.29	5.5 5.4 6.7	Exist. 0+00 <sup>E</sup>							
	1+00	106.5	100.49	6.0	1+99 <sup>E</sup>	1+05 <sup>E</sup> 1+07 <sup>E</sup>						
	2+00	106.5	100.49	6.0	1+99 <sup>E</sup>	2+09 <sup>E</sup> 2+11 <sup>E</sup>						5-1-68 Boiler drain
	3+00	105.6	100.69	4.9		3+14 <sup>E</sup> 3+37 <sup>E</sup>		C 8083	2501 S West St		5-1-68	
	4+00	105.4 105.8	100.89 100.94	4.5 4.9	4+24 <sup>E</sup>	4+11 <sup>E</sup> 4+13 <sup>E</sup> M.H. TAP	B 5145 B 5120 C 3816		2501 S West St 2501 S West St 2501 S West St 2501 S West St		4-9-68 4-8-68 9-4-68 7-25-80 6-27-77	
Line #4	0+00	105.0	100.62	4.4	Exist. 0+00 <sup>E</sup>							
	1+00	105.4	100.82	4.6		0+20 <sup>E</sup> 0+92 <sup>E</sup>						
	2+00	104.7 104.6	101.02 101.07 101.35	3.7 3.5 3.2	2+24 <sup>E</sup> 2+81 <sup>E</sup>	4" stub W	B 4395 C 6575		2533 S West St 2533 S West St		10-21-65 1-24-68	
	0+00	106.0	102.35	3.6	0+00.0 Exist'g MH	Exist'g 4" stub NW						
	1+00	106.4	102.50	3.9	1+00 <sup>E</sup>							
	2+00	106.6	102.65	4.0								
	3+00	106.5	102.80	3.7		3+01 <sup>E</sup> 3+95 <sup>E</sup>						
	4+00	106.3	103.00	3.3								
	5+00	106.3	103.20	3.1	5+02 <sup>E</sup>	6" stub SW	B 4596		2501 S West St		11-19-65	

LAT. 2, SUB. 20, S. S. NO. 22

B 6067-2450 S West - Keith Miller 7-27-66 tap (29+47.0)  
 11-19-65 Permit B 4596 Utility Contractors, Inc. - M.H. 5+00 - Lat 2  
 2501 S. West 8" private line  
 # C 14677 - 2501 S. West St. priv. line conn. - Sub valley sewer - 6-26-69 (2+36.8)  
 # C 14678 - 2501 S. West St. " " " " " " (2+85.6)  
 # C 14679 - 2501 S. West St. " " " " " " " "