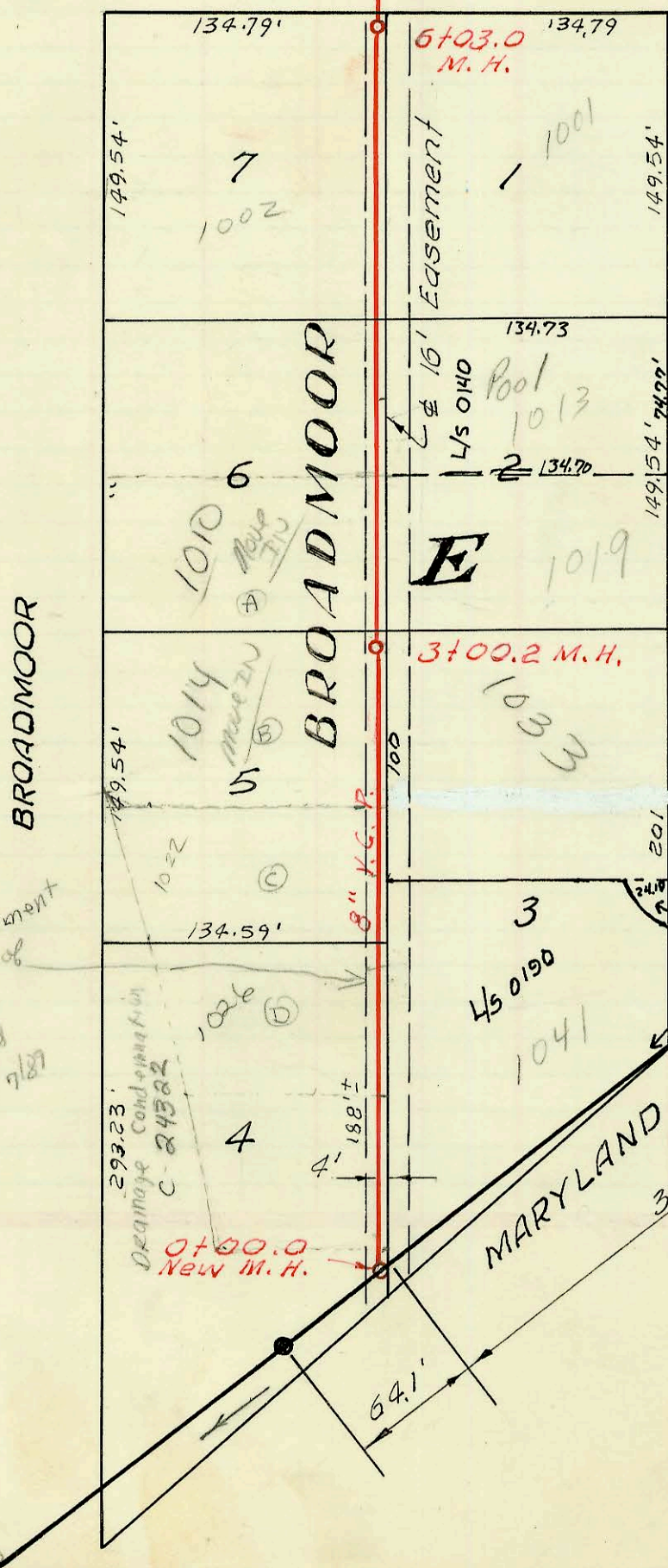


LAT. 30, W. 1. S.
 MID-STATES CONST. CO.
 NOV. 19, 1964, BK. K-81
 PROJ. NO. C24-42



L/S 0766

2' ADD'L easement
 Refers to copy of
 L/S 0766
 inclosed
 BK 111 787

DOREEN

BROADMOOR

BROADMOOR

E

D

ADDN

Easement 7

± 16'

8" K.C.P.

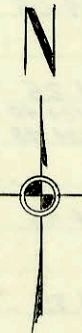
4'

60' BAYLEY ST. 60'

ST.

AVE.

1" = 80'



B6
 P. 30

293.23'
 Drainage Com. C-2432

36" WIS
 306.6'

MARYLAND DR.

L/S 0190

1041

L/S 0140

Pool 1013

Easement 1001

6+03.0 M.H.

9+00.2 M.H.

11+60.0 M.H.

13+84.0 M.H.

135.15'

135.15'

149.54'

149.54'

149.54'

149.54'

149.54'

149.54'

149.54'

149.54'

149.54'

149.54'

149.54'

149.54'

149.54'

149.54'

149.54'

149.54'

149.54'

149.54'

149.54'

149.54'

149.54'

149.54'

134.81'

134.81'

134.81'

134.81'

134.81'

134.81'

134.81'

134.81'

134.81'

134.81'

134.81'

134.81'

134.81'

134.81'

134.81'

134.81'

134.81'

134.81'

134.81'

134.81'

134.81'

134.81'

134.79'

134.79'

134.79'

134.79'

134.79'

134.79'

134.79'

134.79'

134.79'

134.79'

134.79'

134.79'

134.79'

134.79'

134.79'

134.79'

134.79'

134.79'

134.79'

134.79'

134.79'

134.79'

134.73'

134.73'

134.73'

134.73'

134.73'

134.73'

134.73'

134.73'

134.73'

134.73'

134.73'

134.73'

134.73'

134.73'

134.73'

134.73'

134.73'

134.73'

134.73'

134.73'

134.73'

134.73'

134.70'

134.70'

134.70'

134.70'

134.70'

134.70'

134.70'

134.70'

134.70'

134.70'

134.70'

134.70'

134.70'

134.70'

134.70'

134.70'

134.70'

134.70'

134.70'

134.70'

134.70'

134.70'

134.59'

134.59'

134.59'

134.59'

134.59'

134.59'

134.59'

134.59'

134.59'

134.59'

134.59'

134.59'

134.59'

134.59'

134.59'

134.59'

134.59'

134.59'

134.59'

134.59'

134.59'

134.59'

134.54'

134.54'

134.54'

134.54'

134.54'

134.54'

134.54'

134.54'

134.54'

134.54'

134.54'

134.54'

134.54'

134.54'

134.54'

134.54'

134.54'

134.54'

134.54'

134.54'

134.54'

134.54'

134.54'

134.54'

134.54'

134.54'

134.54'

134.54'

134.54'

134.54'

134.54'

134.54'

134.54'

134.54'

134.54'

134.54'

134.54'

134.54'

134.54'

134.54'

134.54'

134.54'

134.54'

134.54'

134.54'

134.54'

134.54'

134.54'

134.54'

134.54'

134.54'

134.54'

134.54'

134.54'

134.54'

134.54'

134.54'

134.54'

134.54'

134.54'

134.54'

134.54'

134.54'

134.54'

134.54'

134.54'

134.54'

134.54'

134.54'

134.54'

134.54'

134.54'

134.54'

134.54'

134.54'

134.54'

134.54'

134.54'

134.54'

134.54'

134.54'

134.54'

134.54'

134.54'

134.54'

134.54'

134.54'

134.54'

134.54'

134.54'

134.54'

134.54'

134.54'

134.54'

134.54'

134.54'

134.54'

134.54'

134.54'

134.54'

134.54'

134.54'

134.54'

134.54'

134.54'

134.54'

134.54'

134.54'

134.54'

