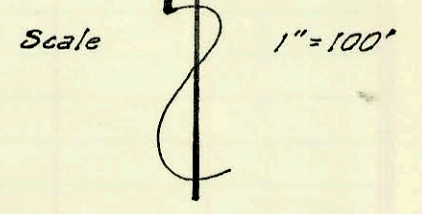
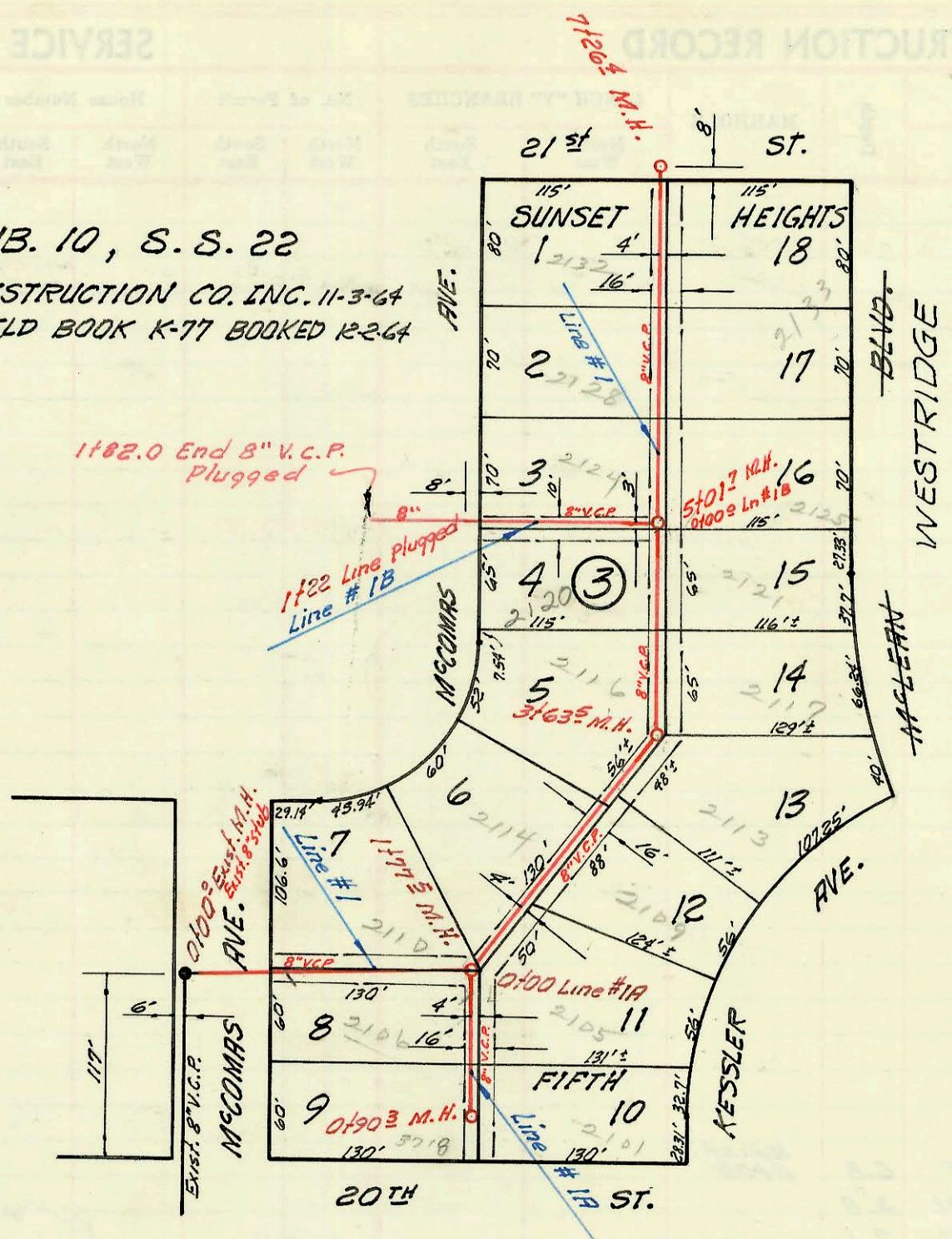


LAT. 21, SUB. 10, S. S. 22  
W. B. CARTER CONSTRUCTION CO. INC. 11-3-64  
PROV. NO. C28-6 FIELD BOOK K-77 BOOKED 12-2-64

Commissioner



K-177

Form 42-020

CONSTRUCTION RECORD

SERVICE RECORD

Line # 1

Line # 1A

Line # 1B

LAT. 19, Sub 10, S. S. No. 22  
Bk. J. K. # 9  
9-6-67  
C28-4

STATION	ELEVATION		Depth	MANHOLE	4-INCH "Y" BRANCHES		No. of Permit		House Number		DATE OF PERMITS		
	Ground	Grade			North West	South East	North West	South East	North West	South East	North West	South East	
Lat. 21, Sub. 10, S. S. 22 0+00	131.40	124.05	7.4	Exist. 0+00	Exist. 8" stub	0+65	C8065	C9970	2110 N. 2106 McCormac McCormac		8-30-68	8-7-68	
1+00	132.2 132.1	124.25 out 124.40 in 124.98	8.0 7.7 7.6	1+77									
2+00	131.9	124.55	7.4				C7132		2114 N. McCormac		3-4-68		
3+00	130.8	124.75	5.9			2+47		C1889	2109 N. Kessler			2-14-67	
	130.6	out 124.88 in 124.98	5.7 5.6	3+63	3+26	3+24	#C5683	#B6293	2116 N. 21137. McCormac Kessler		11-9-67	8-30-66	
4+00	130.1	125.05	5.1			3+85		B6031	2117 Kessler			7-19-66	
5+00	131.4 131.4	125.25 125.25	6.2 6.2	5+01	4+44	4+42	#C5684	#B5689	2120 N. 2121 McCormac Kessler		11-9-67	5-24-66	
					5+11	5+09	#C4589	#B5688	2124 N. 2125 McCormac Kessler		8-24-67	5-24-66	
					5+82	5+80	#C4590		2128 N. McCormac		8-24-67		
6+00	131.8	125.45	6.4		6+45	6+43	#C12115	B3319	2132 N. 2133 McCormac Kessler		1-14-69	5-4-65	
7+00	130.6 130.3	125.65 125.70	5.0 4.6	7+26									
0+00	132.1	124.56	7.6	Exist. 0+00			0+20	0+18	B5151	2105 N. Kessler		3-1-66	
							0+75	0+73	#5122 #B2372	3710 W. 2101 Kessler		2-23-66	11-23-64
	131.7	126.40	5.3	0+90									
0+00	131.4	125.36	6.0	Exist. 0+00									
1+00	131.8	125.55	6.3										
	132.3	125.59	6.7										
	1+82.0	End 8" V.C.P.	Plug line										
	1+82.0	125.72	6.6										

1+22 Line Plugged