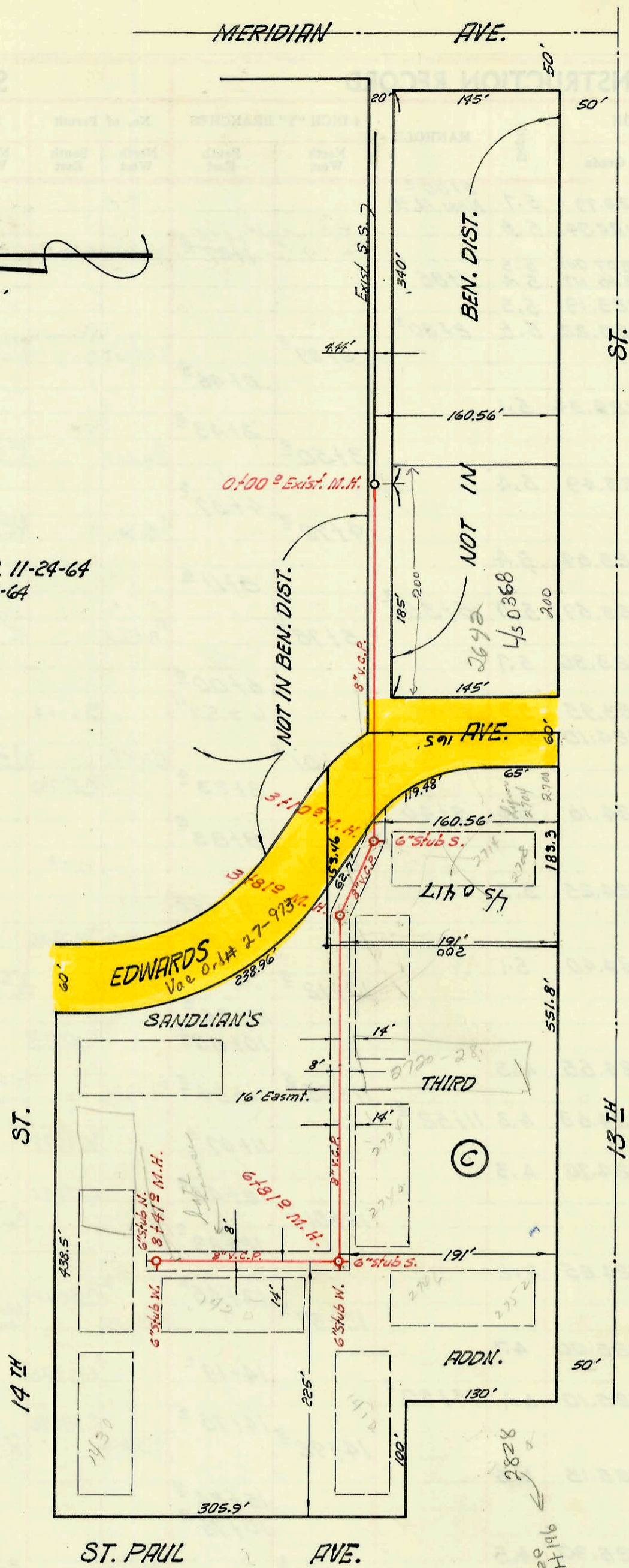


LAT. 95. S. S. 22
W. B. CARTER CONSTRUCTION CO., INC. 11-24-64
PROJ. NO. C24-49 K-81 BOOKED 12-10-64



CONSTRUCTION RECORD						SERVICE RECORD						
STATION	ELEVATION		Depth	MANHOLE	4-INCH "Y" BRANCHES		No. of Permit		House Number		DATE OF PERMITS	
	Ground	Grade			North West	South East	North West	South East	North West	South East	North West	South East
LAT. 95, S.S. 22												
0+00	122.1	111.20	10.9	0+00 ²								
1+00	122.6	111.50	11.6		0+69		667050		2642		6-23-78	
2+00	122.6	111.80	10.8		1+48		667060		E. 13th.		6-26-78	
3+00	121.4	112.10	9.3									
	121.4	out 112.13 in 112.33	9.2	3+10 ²		6" stub S.		C73649		2704		8-15-79
						3+40 ²		66189		2713		8-16-66
4+00	121.2	out 112.44 in 112.54	8.8	3+81 ²								
	120.7	112.60	8.1									
						4+61 ²		B4966		2770-28		1-18-66
						4+78 ² "6" V"						
5+00	119.9	112.90	7.0									
						5+50 ²						
						5+67		B4047		2734-40		8-31-65
6+00	120.9	113.20	7.7									
						6+12 ²						
	121.4	out 113.44 in 113.54	8.0	6+81 ²	6" stub W.	6" stub S.	B2552	64046	14127	2746-52	12-23-64	8-31-65
7+00	121.6	113.60	8.0									
						7+44 ²		B2553	14327		12-23-64	
8+00	122.1	113.90	8.2									
						8+16 ²						
	121.6	114.02	7.4	8+41 ²	6" stub W.	6" stub N.	B2555		14327		12-23-64	

B3757 - top - 1420-24 N. St. Paul (near both houses) Leeson, Inc. 7-7-65 (7+60)
 B41048 - top - 2734 W. 13th - Leeson, Inc. 9-2-65 (6+43)
 B4965 top - 2715 St. 14th - Leeson, Inc. - 1-18-66 (8+26.1)
 B5906 - top - 2700 W. 13th - Donald Thompson 6-27-66 (2+79.5)
 SWR2007-00417-2642 W13th - s/o @ 114' west of mtl