

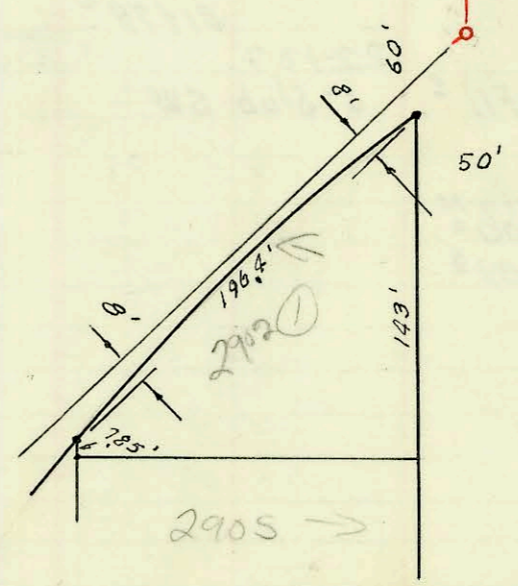
Scale 1" = 80'

Cessna

CESSNA EMPLOYEE CENTER
 SAN. SEWER
 W. B. CARTER CONST. CO. INC.
 PRIVATE JOB BK I. H. # 62
 July 1, 1967

PRAIRIE STATES CONST. CO. SS
 BUILT BY: W.B. CARTER CONST. CO.
 PROJ. N^o DBKW 707044
 BOOKED 11-8-77 FROM SRL 12

LAT. 1, SUB. 10, W. I. S.
 UTILITY CONTRACTORS INC.
 PROJ. NO. C 22-5, JAN. 29, 1964
 BOOK NO. K-78



CONSTRUCTION RECORD						SERVICE RECORD						
STATION	ELEVATION		Depth	MANHOLE	•INCH "Y" BRANCHES		No. of Permit		House Number		DATE OF PERMITS	
	Ground	Grade			North West	South East	North West	South East	North West	South East	North West	South East
0+00	125.1	117.00	8.1	Exist ^d M.H. 0+00.0		4" stub So.						
1+00	125.8	117.50	8.3			6" 1+50 ^o						
2+00	125.9	118.00	7.9	TAP 1+98.1		4" 1+57 ^o	# 3331 261693	2750 S. Oliver		5-18-81 6-16-77		
3+00	126.7	118.50	8.2	2+99 ^z		4" 2+25 ^o						
4+00	127.6	119.00	8.6			6" 3+40 ^o	# 3330 63280	2809 S. Wash. Blvd.		4-15-80 4-27-65		
5+00	128.3	119.50	8.8			6" 3+98 ^o 6"						
6+00	128.9	120.00	8.9	5+96 ^o		6" 5+22 ^o	63281	2813 S. Wash. Blvd.		4-27-65		
7+00	130.1	120.50	9.6			6" 5+65 ^o	63282	2815 S. Wash. Blvd.		4-27-65		
8+00	130.5	121.00	9.5			4" 6+25 ^o	84696	2825 S. Wash. Blvd.		12-2-65		
9+00	131.4	121.50	9.9			6" 6+84 ^o	C 55895	2835 S. Wash. Blvd.		6-14-76		
9+00	131.4	121.56	9.8	9+09 ^z		8" stub So.						
		Stub 121.70										
PRIVATE JOB												
0+00	118.75	80	80	0+00.0 = 2+99.7 in Cat. 1, Sub 10, W. 1-S.								
	119.07	80	80	0+8.0.0		6" stub E.						
PRAIRIE STATES CONST. CO. S.S.												
0+00	125.7	119.74	6.00	0+00								
	126.8	119.78	7.00	0+94.4		6" stub E	63570 21329	2700 S. Wash Blvd (Bids #2) 2700 S. Wash Blvd (Bids #3)		10-18-77 8-18-88		
								Refer to copy enclosed of 6" private line				

S.O. 2760 S. Oliver - 9-21-77 Don Coleman ()

21329 - 2700 S. Wash Blvd - 8/18/88 - tied into existing 6" ABS 40 private line
38' E of W.R. and 17' S of office bldg.