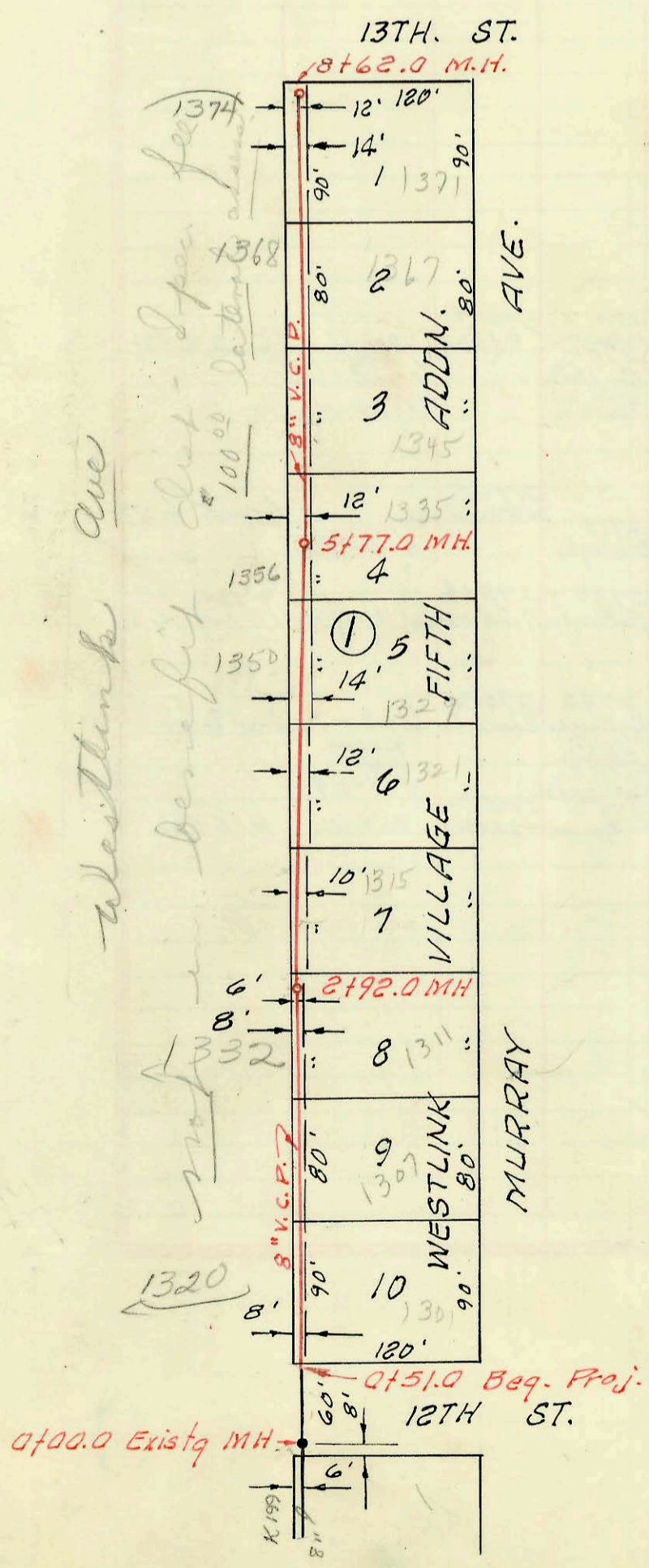


CAUTION
UNDERGROUND
UTILITIES
 Please check with K G & E or
 Southwestern Bell
 Telephone Co. for Location

LAT. 8, WESTLINK SEWER
 W. B. CARTER CONST. CO. INC.
 PROJ. NO. C24-26, BK. K-73
 MAR. 22, 1966



LAT. 9, WESTLINK SEWER
 MID-STATES CONST. CO. INC.
 PROJ. NO. C24-27, BK. K-83
 4-28-66

CONSTRUCTION RECORD

SERVICE RECORD

STATION	ELEVATION		Depth	MANHOLE	4-INCH "Y" BRANCHES		No. of Permit		House Number		DATE OF PERMITS		
	Ground	Grade			North West	South East	North West	South East	North West	South East	North West	South East	
LINE NO. 1	0+00	153.0	142.99	10.0	EXIST'G MH.								
	0+50	Beg. project											
	0+50	152.8	143.09	9.7									
	1+00	151.8	143.17	8.6									
		151.1	143.26	7.8	1+45°			B5345	1302 Murray		3-28-66		
	2+00	151.5	143.37	8.1				B5309	1308 Murray Ave.		3-23-66		
	3+00	152.0	143.57	8.4									
	3+66.0	153.1	143.72	9.4	End 8" V.C.P.			C1269	1316 Murray		12-19-66		
LINE NO. 2	0+00	151.5	143.48	8.0	0+00=1+45° Line No. 1								
						0+44°	0+46°	C2066	B5310	9433 Briarwood	9432 W. 12th	3-1-67	3-23-66
							0+93°		B5455				4-15-66
	1+00	153.9	143.98	9.9		1+30°							
							1+77°						
	2+00	154.3	144.58	9.7		1+93°		C2536	C1616	9429 Briarwood	9418 W. 12th	4-4-67	1-20-67
	3+00	154.7	145.18 out 145.28 in	9.5 9.4	3+00°	3+18°	3+25°	C2128	B5311	9411 Briarwood	9414 W. 12th	4-18-67	6-8-66 3-23-66
							3+69°						
	4+00	155.0	145.58	9.4		3+87°							
		154.8	145.66 out 145.76 in	9.1 9.0	4+26°	3+93°		C2065	9421 Briarwood			3-1-67	
	5+00	155.3	145.98	9.3		4+46°		C2823	9315 Briarwood			4-26-67	
						5+14°		C3460	9301 Briarwood			6-7-67	
						5+16°							
							5+33°		B5369	9322 W. 12th			3-30-66
	6+00	154.7	145.28	9.4		5+70°		C3577	9211 Briarwood			6-13-67	
		154.7	145.32 out 145.42 in	9.4 9.3	6+11°	6+36°	6+35°						
							6+55°		B5346	9310 W. 12th			3-28-66
	7+00	154.8	145.77	9.0		4" stub W.	4" stub E.	B5592	C2822	9302 W. 12th	9223 Briarwood	5-10-66	4-26-67
		154.7	145.85	8.8	7+18°								
L.A.T. 9, WESTLINK SEWER	0+00	149.9	142.52	7.4	EXIST'G MH								
	0+51.0	Beg. proj.											
	1+00	149.8	142.72	7.1		0+87°	0+85°	C26802	B6268	1320 Westlink	1301 Murray	8/25/71	8-30-66
	1+00	149.8	142.72	7.1		1+70°	1+68°	C38228	B5647	1326 Westlink	1307 Murray	4-17-73	5-16-66
	2+00	150.2	142.92	7.3		2+48°	2+46°		B5646	1311 Murray		5-16-66	
		150.3	143.10	7.2	2+92°	2+54°							
	3+00	150.6	143.12	7.5		3+27°	3+25°	C37297	C1462	1328 Westlink	1315 Murray	2-20-73	1/6/67
							3+98°		C2152	1321 Murray			3-7-67
	4+00	151.8	143.32	8.5		4+00°		C37298	1344 Westlink			2-20-73	
						4+79°	4+77°						
	5+00	152.3	143.52	8.8		5+04°	5+27°	C37062	B6269	1350 Westlink	1329 Murray	2-6-73	8-30-66
						5+63°	5+61°		C800	1338 Murray			11-14-66
	6+00	152.3	143.67	8.6	5+77°	5+53°		C37735	1356 Westlink			5-16-73	
		152.6	143.72	8.9		6+31°	6+49°	C36434	1362 Westlink			(Spec Fee + 4" radius)	12-26-72
	7+00	151.2	143.92	7.3		7+25°	7+23°	C37738	C1527	1345 Murray	1367 Murray	1-12-67	7-5-67
						7+98°	7+96°		C3809	1368 Westlink			
	8+00	149.8	144.12	5.7		8+00°		C37737	C3632	1371 Murray			7-17-72
		149.5	144.24	5.3	8+62°								

Lat. Assay. fee 8/25/71
100⁰⁰ - Rec. 99621

- 163776-1326 Westlink Spec fee 8/25/71
- 111757-1332 Westlink Spec fee 11-22-71 (R)
- 145112-1362 Westlink - Spec fee 100⁰⁰ 11-8-72
- 151738-1350 Westlink - Spec fee 100⁰⁰ 2-6-73
- 156022-1344 Westlink - Spec fee 100⁰⁰ 2-20-73
- 156023-1338 Westlink - Spec fee 100⁰⁰ 2-20-73
- 156144-1356 Westlink - Spec fee 100⁰⁰ 3-16-73
- 156146-1374 Westlink - Spec fee 100⁰⁰ 3-16-73
- 156147-1366 Westlink - Spec fee 100⁰⁰ 3-16-73