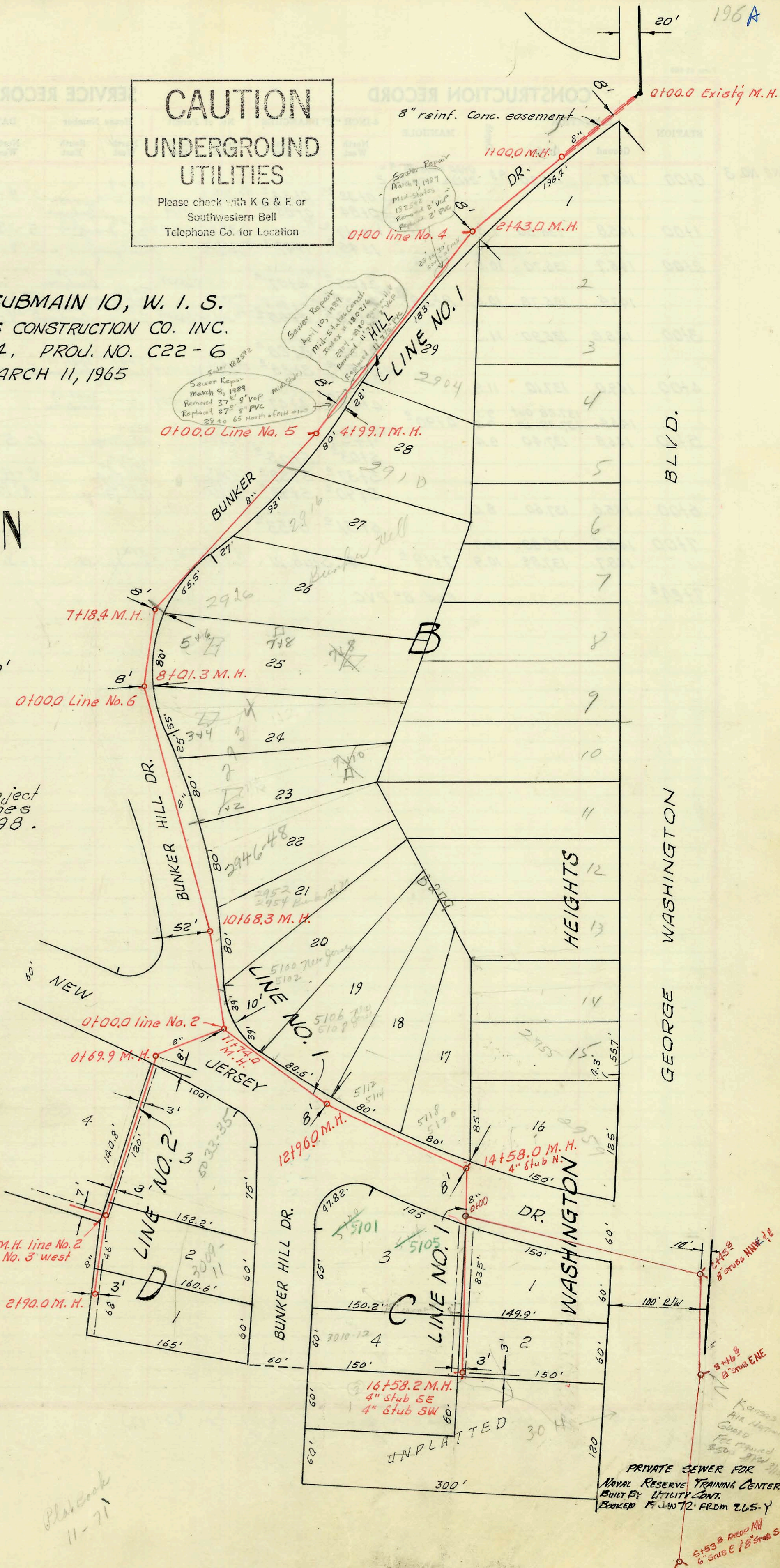
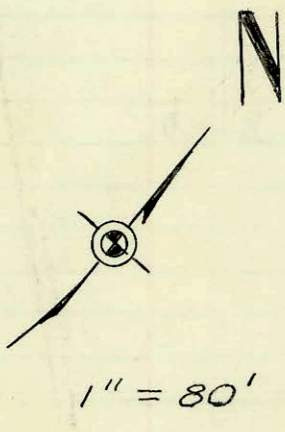


**CAUTION**  
**UNDERGROUND**  
**UTILITIES**  
 Please check with K G & E or  
 Southwestern Bell  
 Telephone Co. for Location

LAT. 2, SUBMAIN 10, W. I. S.  
 MID-STATES CONSTRUCTION CO. INC.  
 BK. NO. K-84, PROJ. NO. C22-6  
 MARCH 11, 1965

NOTE: this project  
 booked on pages  
 196, 197 and 198.



BLVD.

GEORGE WASHINGTON

HEIGHTS

WASHINGTON

PRIVATE SEWER FOR  
 NAVAL RESERVE TRAINING CENTER  
 BUILT BY UTILITY CONT.  
 BOOKED 15 JAN 72 FROM 265-Y

3" 4" 6" 8" stubs ENE  
 5153 8' 8" stubs NW  
 6" stubs E 7' 8" stubs S

Plot Book  
 11-71

CONSTRUCTION RECORD

SERVICE RECORD

LINE NO. 1

STATION	ELEVATION		Depth	MANHOLE	4-INCH "V" BRANCHES		No. of Permit		House Number		DATE OF PERMITS	
	Ground	Grade			North West	South East	North West	South East	North West	South East	North West	South East
0+00	130.8	121.72	9.1	0+00 <sup>o</sup> Exist'g M.H.								
1+00	127.3	122.12	5.2	1+00 <sup>o</sup>								
2+00	128.0	122.52	5.5									
3+00	130.1	122.92	7.2	2+43 <sup>o</sup>								
4+00	130.1	123.32	6.8		3+83				2904			12-31-75
5+00	130.9	123.72	7.2	4+99 <sup>z</sup>	3+04 <sup>o</sup>			C52979	Bunker Hill			
6+00	132.0	124.12	7.9		4+85.1				2910			12-31-75
7+00	133.7	124.52	9.2	7+18 <sup>z</sup>	4+51 <sup>o</sup>			C52980	Bunker Hill			
8+00	135.0	125.06 out 125.16 in	9.9 9.8	8+01 <sup>z</sup>	5+38.2			C52547	2916			11-21-75
9+00	135.5	126.50	8.9		5+58 <sup>o</sup>				Bunker Hill			
10+00	137.5	128.20	9.3	10+68 <sup>z</sup>	6+58 <sup>o</sup>			C52546	2926			11-21-75
11+00	140.1	129.80	10.3		7+28.4				2934 #7-8			1-29-75
12+00	141.8	131.32 out 132.00 in	10.5 9.8	11+74 <sup>z</sup>	7+38 <sup>o</sup>			C48226	2934 #5-6			1-21-76
13+00	142.7	133.66	8.0	12+96 <sup>o</sup>	7+42.4			C53305	Bunker Hill			
14+00	144.7	135.95	8.7		8+24 <sup>o</sup>			C48224	2934 #1-2			1-29-75
15+00	145.7	137.62	8.1	14+58 <sup>o</sup>	9+16 <sup>o</sup>			C48225	2934-#13-4			1-29-75
16+00	146.1	137.71	8.4		9+87 <sup>z</sup>				2946-48			4-13-79
17+00	146.8	138.11	8.7	16+58 <sup>z</sup>	9+68.3			C71221	Bunker Hill			
18+00	147.2	138.41	8.8	16+58 <sup>z</sup>	10+81 <sup>o</sup>			C3181	2952-54			5-22-67
19+00	148.1	139.55	10.0	12+33 <sup>z</sup>	11+28 <sup>z</sup>			C3182	5100-02			5-22-67
20+00	148.8	139.55	10.0	12+77 <sup>z</sup>	11+47 <sup>o</sup>				New Jersey			
21+00	149.2	139.55	10.0	13+14 <sup>o</sup>				C3183	5106-08			5-22-67
22+00	149.7	139.55	10.0	13+90 <sup>o</sup>				C2733	5112-14E			4-18-67
23+00	149.7	139.55	10.0	14+35 <sup>z</sup>				C2732	5118-20E			4-18-67
24+00	149.7	139.55	10.0	14+58 <sup>o</sup>	4" stub N.			C3367	2959			5-10-65
25+00	149.7	139.55	10.0	14+80 <sup>o</sup>	4" stub			C61251	2955			5-24-77
26+00	149.7	139.55	10.0	15+50 <sup>z</sup>					2955			
27+00	149.7	139.55	10.0	15+56 <sup>z</sup>					5105			12-21-65
28+00	149.7	139.55	10.0	15+98 <sup>z</sup>				C4809	New Jersey			12-21-65
29+00	149.7	139.55	10.0	16+22 <sup>o</sup>				C6904	3010-12			12-19-78
30+00	149.7	139.55	10.0	16+58 <sup>z</sup>	4" stub S.E. M.H. Tap			C39985	3011			7-11-73
31+00	149.7	139.55	10.0	16+58 <sup>z</sup>	4" stub S.W. stub S.E.			53309	3011			1-21-76

LINE NO. 2

0+00	139.0	132.00	7.0	0+00 Line 2 = 11+74 line 1								
1+00	142.0	133.39	8.6	0+69 <sup>z</sup>								
2+00	144.8	134.00	10.8									
3+00	145.5	136.00	9.5									
4+00	145.7	136.22 out 137.94 in	9.5 7.8	2+10 <sup>o</sup>								
5+00	145.6	139.54	7.1	2+90 <sup>o</sup>								
6+00	144.8	138.06	6.7	2+43 <sup>o</sup>								
7+00	146.1	138.67	7.4	3+46 <sup>o</sup>								
8+00	150.7	139.76	10.9	5+53 <sup>o</sup>								
9+00	144.9	136.64	8.3	0+00 BUILT OVER EXIST. LINE								
10+00	144.8	138.06	6.7	2+43 <sup>o</sup>								
11+00	146.1	138.67	7.4	3+46 <sup>o</sup>								
12+00	150.7	139.76	10.9	5+53 <sup>o</sup>								
13+00	144.9	136.64	8.3	0+00 BUILT OVER EXIST. LINE								
14+00	144.8	138.06	6.7	2+43 <sup>o</sup>								
15+00	146.1	138.67	7.4	3+46 <sup>o</sup>								
16+00	150.7	139.76	10.9	5+53 <sup>o</sup>								
17+00	144.9	136.64	8.3	0+00 BUILT OVER EXIST. LINE								
18+00	144.8	138.06	6.7	2+43 <sup>o</sup>								
19+00	146.1	138.67	7.4	3+46 <sup>o</sup>								
20+00	150.7	139.76	10.9	5+53 <sup>o</sup>								
21+00	144.9	136.64	8.3	0+00 BUILT OVER EXIST. LINE								
22+00	144.8	138.06	6.7	2+43 <sup>o</sup>								
23+00	146.1	138.67	7.4	3+46 <sup>o</sup>								
24+00	150.7	139.76	10.9	5+53 <sup>o</sup>								
25+00	144.9	136.64	8.3	0+00 BUILT OVER EXIST. LINE								
26+00	144.8	138.06	6.7	2+43 <sup>o</sup>								
27+00	146.1	138.67	7.4	3+46 <sup>o</sup>								
28+00	150.7	139.76	10.9	5+53 <sup>o</sup>								
29+00	144.9	136.64	8.3	0+00 BUILT OVER EXIST. LINE								
30+00	144.8	138.06	6.7	2+43 <sup>o</sup>								
31+00	146.1	138.67	7.4	3+46 <sup>o</sup>								
32+00	150.7	139.76	10.9	5+53 <sup>o</sup>								

# 134810-5101 New Jersey - Moon + Bone - 12-21-65 - top (16+06.2)  
 Per. # 283809 - Kansas Air National Guard - Spec. fee for sewer conn. 4/16/76 - 500<sup>o</sup>  
 # 055096 - " " (3026 Lee Wash. Blvd.) 5/6/76 - 8" stub ENE MH 3+46.8  
 # 63129 - " " 2955 Lee Wash. Blvd. 9-10-77 (MH 4+58)