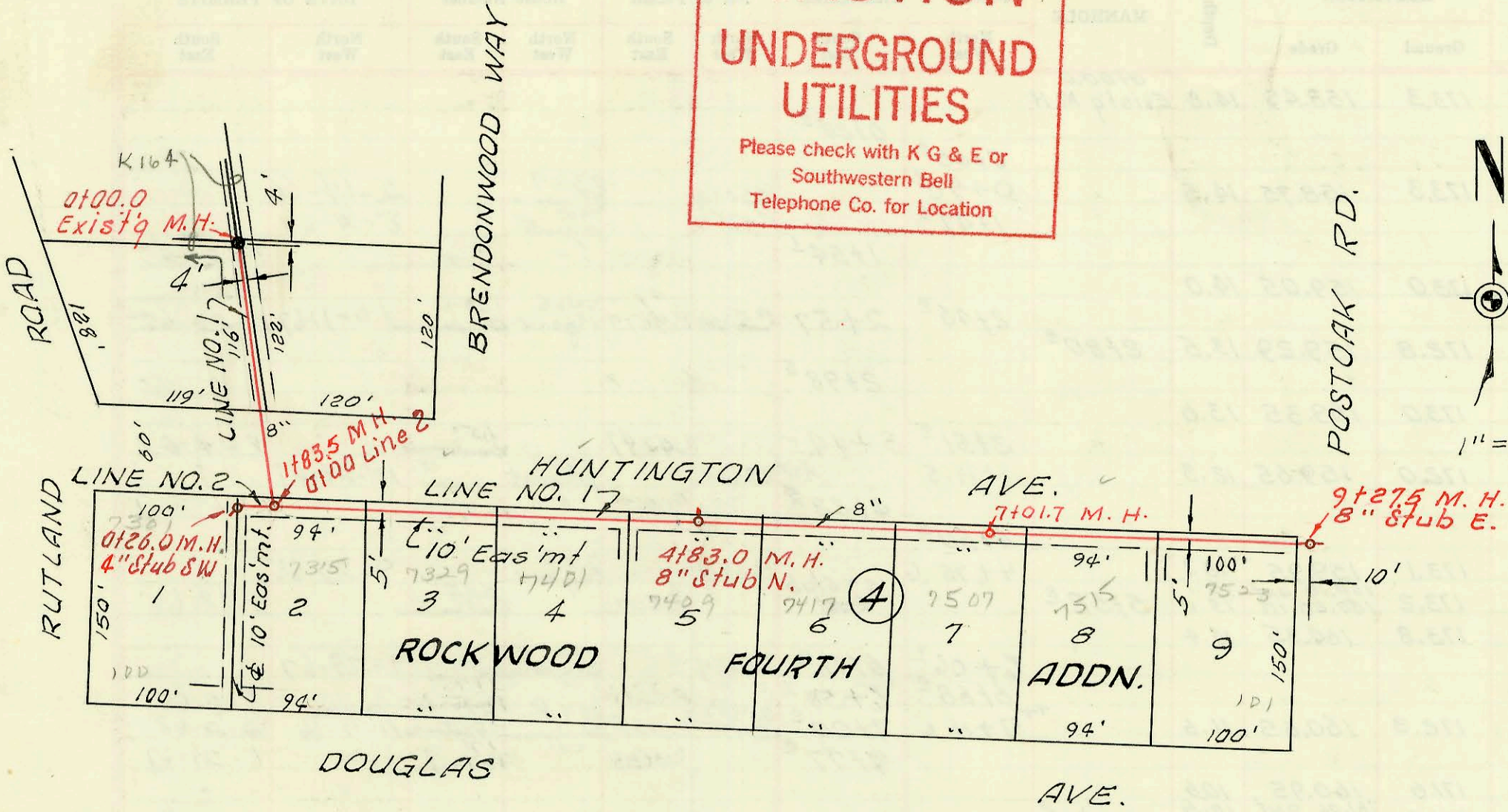
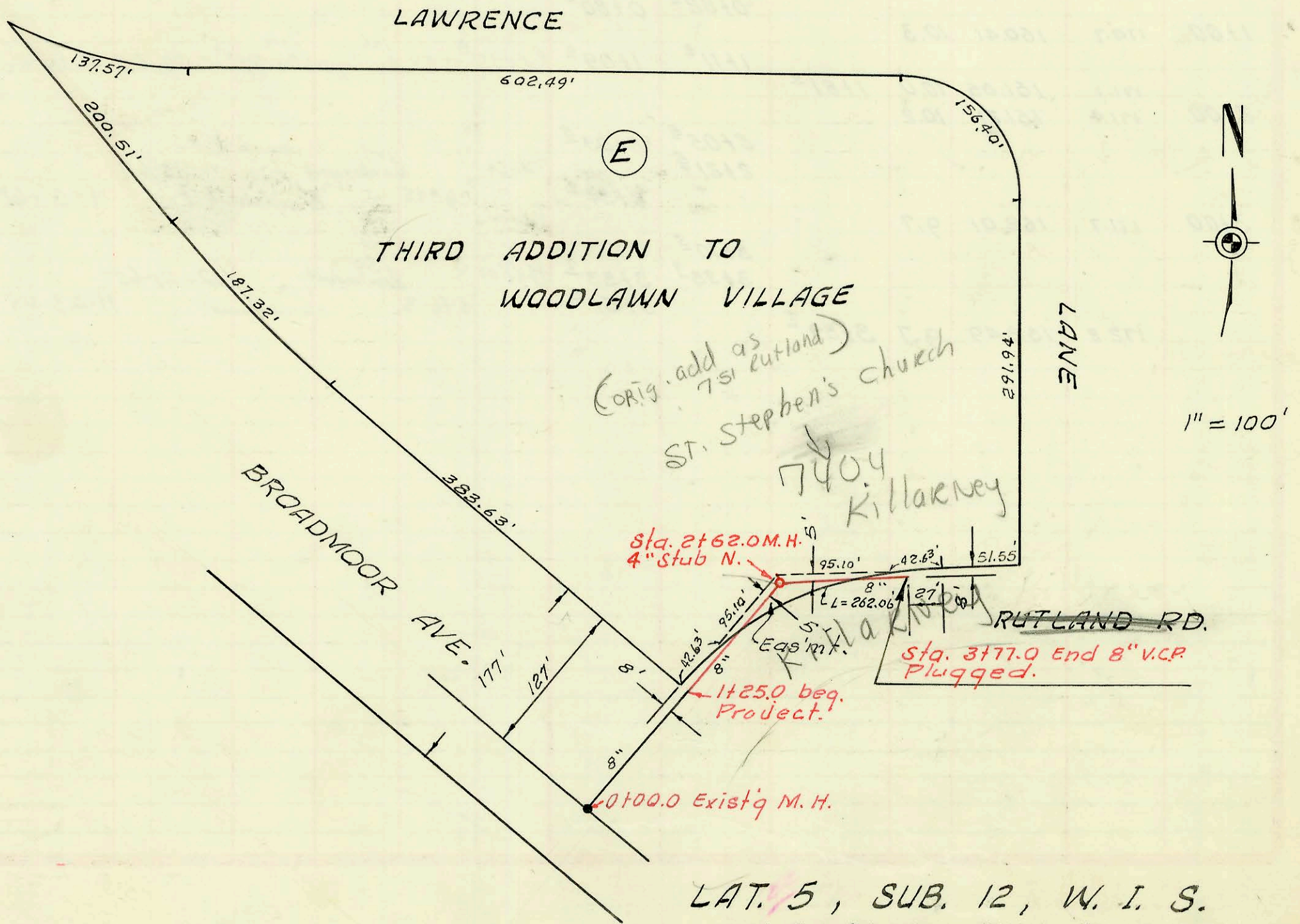


CAUTION
UNDERGROUND
UTILITIES
 Please check with K G & E or
 Southwestern Bell
 Telephone Co. for Location



LAT. 28, SUB. 5-A, W. I. S.
 W. B. CARTER CONST. CO. INC.
 BOOK NO. K-76-A, PROJ. NO. C25-4
 MAY, 1965



LAT. 5, SUB. 12, W. I. S.
 W. B. CARTER CONST. CO. INC.
 BK. NO. K-78, PROJ. NO. C25-1
 MAY 1965

CONSTRUCTION RECORD

SERVICE RECORD

LINE NO. 1

Lat. 28, Sub. 5-A, W. 1. S.

LINE NO. 2

Lat. 5, Sub. 12, W. 1. S.

STATION	ELEVATION		Depth	MANHOLE	4-INCH "Y" BRANCHES		No. of Permit		House Number		DATE OF PERMITS	
	Ground	Grade			North West	South East	North West	South East	North West	South East	North West	South East
0+00	170.9	158.45	12.4	0+00 ² Existg M.H.	0+31 ²	0+19	B4617	107 Brenderswood			11-24-65	
1+00	170.5 170.4	158.65 158.82 out 158.92 in	11.8 11.6 11.5	1+83 ⁵								
2+00	170.4	158.95	11.4			1+90 ² 2+18.2 ² 2+70 ²	B4615	7315 Huntington			11-23-65	
3+00	170.6	159.15	11.4			3+19.5 ² 3+66 ² 3+91.7 ²	tap B4103	7329 Huntington			9-13-65	Joe Golding
4+00	170.9	159.35	11.5			4+59 ² 4+79	B3848	7401 Huntington			7-27-65	
5+00	170.2 170.1	159.51 159.55	10.7 10.5	4+83 ²	8" stub No.	5+55 ²	C3437	7409 Huntington			6-7-67	
6+00	169.7	159.75	10.0			6+48 ²	B5277	7417 Huntington			3-18-66	
7+00	169.6 169.6	159.95 159.95	9.6 9.6	7+01 ²		7+45 ² 7+71.1 ² 8+42 ²	B4102	7515 Huntington			9-13-65	Joe's Semore Lairs
8+00	169.6	160.15	9.4			8+76.3 ² 8" stub East	C2463	7523 Huntington			3-30-67	
9+00	170.0 169.8	160.35 160.40	9.6 9.4	9+27 ⁵								
0+00	169.9	160.60	9.3	0+00 ² = 1+83 ⁵ Line No. 1	0+26 ²	4" stub S.W.	C7318	7301 Huntington			3-15-68	
0+00	168.4	155.63 out 156.46 in	12.8 11.9	0+00 ² Existg M.H.								
1+00	169.9	156.86	13.0									
1+25		156.96		Beq. Project								
2+00	168.8	157.26 out 157.52 out	11.5 10.8			4" stub N	323967 32323					
3+00	169.3	157.62 in	10.7	2+62 ²								
3+77.0	169.2 169.1	157.76 158.07	11.4 11.0	End 8" PVC plugged								

St. Stephen's church
7404
Killaerney
9-28-65
5-4-65
Rifford K