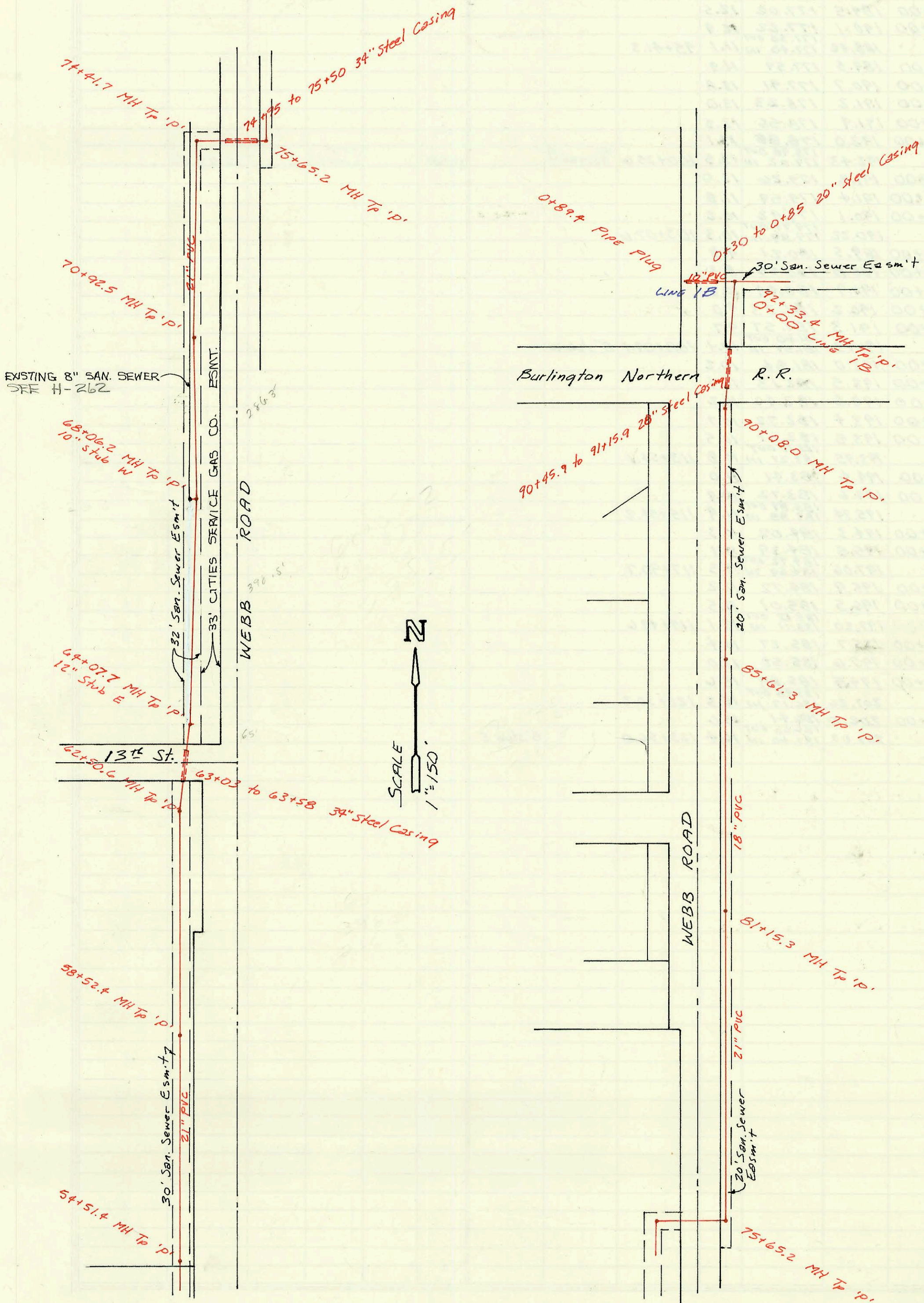


MAIN 24 WAR INDUSTRIES SEWER, PHASE I
468-76-245-81477-000-001
Built By B. A. DURST
Booked 10-87 from JNL-100
M



CONSTRUCTION RECORD

SERVICE RECORD

MAIN 24,
Line 1
(Cont)

STATION	ELEVATION		Depth	MANHOLE	4-INCH "Y" BRANCHES		No. of Permit		House Number		DATE OF PERMITS	
	Ground	Grade			North West	South East	North West	South East	North West	South East	North West	South East
54, WIS	PHASE I (Cont)											
55+00	179.5	167.27	12.2									
56+00	179.8	167.46	12.3									
57+00	181.4	167.66	13.7									
58+00	183.0	167.86	15.1									
	184.26	167.96 OUT 167.97 IN	16.3	58+52.4								
59+00	184.0	168.08	15.9									
60+00	184.9	168.30	16.6									
61+00	183.6	168.53	15.1									
62+00	183.0	168.76	14.2									
	182.56	168.87	13.7	62+50.6								
63+00	181.9	168.94	13.0									
64+00	181.0	169.09	11.9									
	181.96	169.10 OUT 169.18 IN	12.9	64+07.7		12" stub E						
65+00	181.5	169.34	12.2									
66+00	182.0	169.52	12.5									
67+00	183.0	169.70	13.3									
68+00	184.5	169.88	14.6									
	184.77	169.89 OUT 169.86 IN	14.9	68+06.2								
69+00	184.7	169.99	14.7									
70+00	185.9	170.14	15.8									
	187.45	170.27 OUT 170.21 IN	17.2	70+92.5								
71+00	187.2	170.22	17.0									
72+00	189.0	170.32	18.7									
73+00	190.6	170.43	20.2									
74+00	190.3	170.54	19.8									
	191.12	170.58 OUT 170.73 IN	20.5	74+41.7								
75+00	188.5	170.79	17.7									
	189.06	170.85 OUT 170.90 IN	18.2	75+65.2								
76+00	188.5	170.94	17.5									
77+00	187.2	171.14	16.1									
78+00	185.5	171.31	14.2									
79+00	184.0	171.48	12.5									
80+00	181.0	171.66	9.3									
81+00	184.3	171.83	12.5									
	185.96	171.86 OUT 173.58 IN	14.1	81+15.3								
82+00	185.5	173.83	11.7									
83+00	186.6	174.12	12.5									
84+00	189.0	174.41	14.6									
85+00	190.5	174.70	15.8									
	191.11	174.88 OUT 174.79 IN	16.2	85+61.3								
86+00	190.3	174.89	15.4									
87+00	190.0	175.14	14.9									
88+00	190.0	175.39	14.6									
89+00	190.0	175.64	14.4									
90+00	190.0	175.89	14.1									
	190.32	175.91 OUT 175.96 IN	14.4	90+08.0								
91+00	191.3	176.20	15.1									
92+00	190.0	176.47	13.5									
	189.83	176.56 OUT 176.70 IN	13.3	92+33.4								
LINE 1B	0+00	189.83	177.19	12.6	92+33.4 L-1 0+00							
	0+89.4	191.5	178.21	13.3								