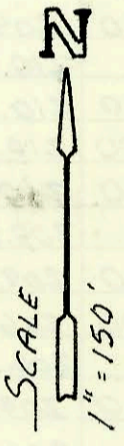
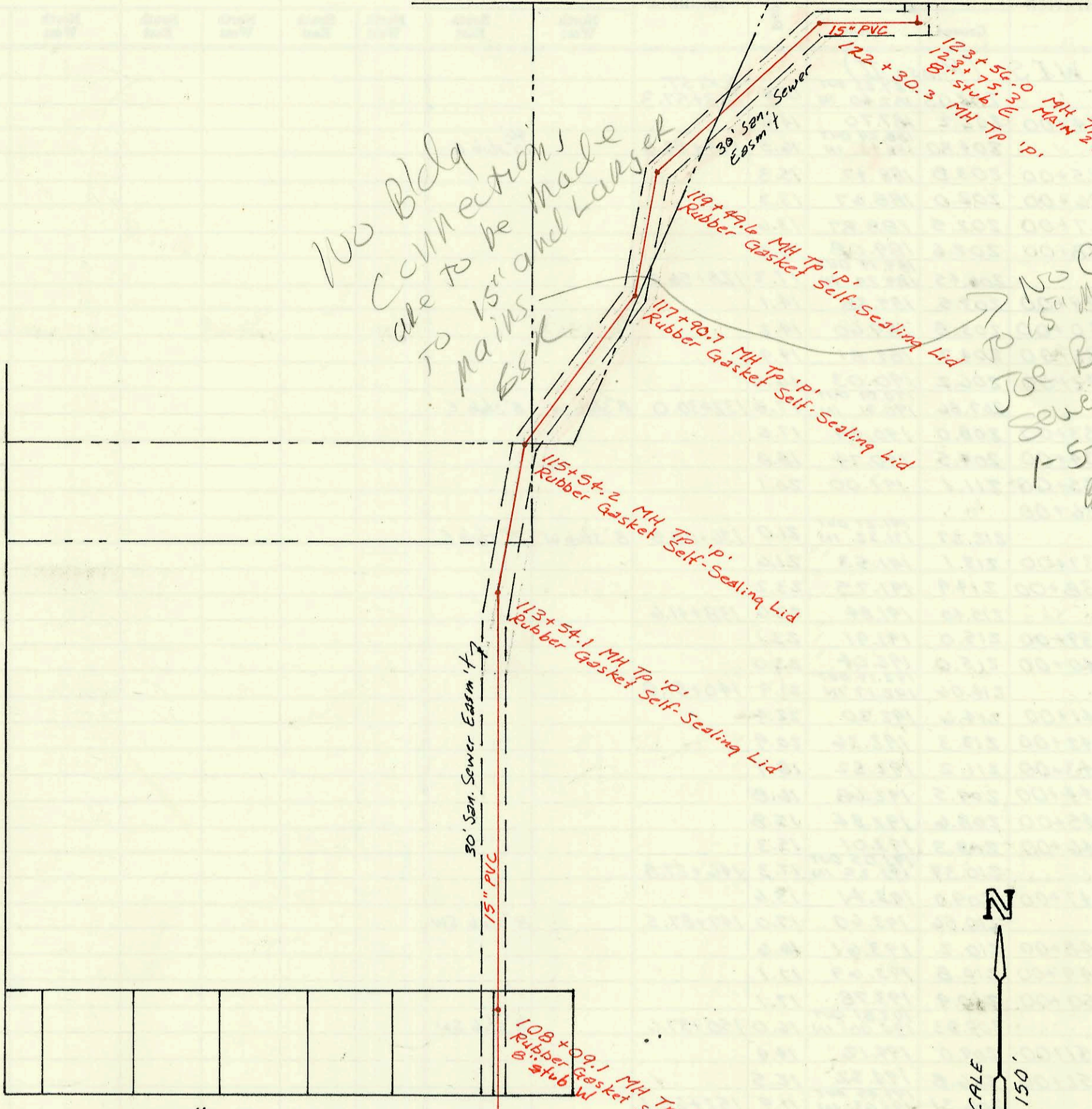


SERVICE RECORD CONSTRUCTION RECORD

21st ST. NO.

No Bldg connections are to be made to 15" mains and Lateral

No Connection to 15" main per Joe Botindly Sewer Maint 1-5-05 bu



19th ST. NO.

S.S. MH to serve Eastminster Student Center 1958 N. Webb 499 PPS

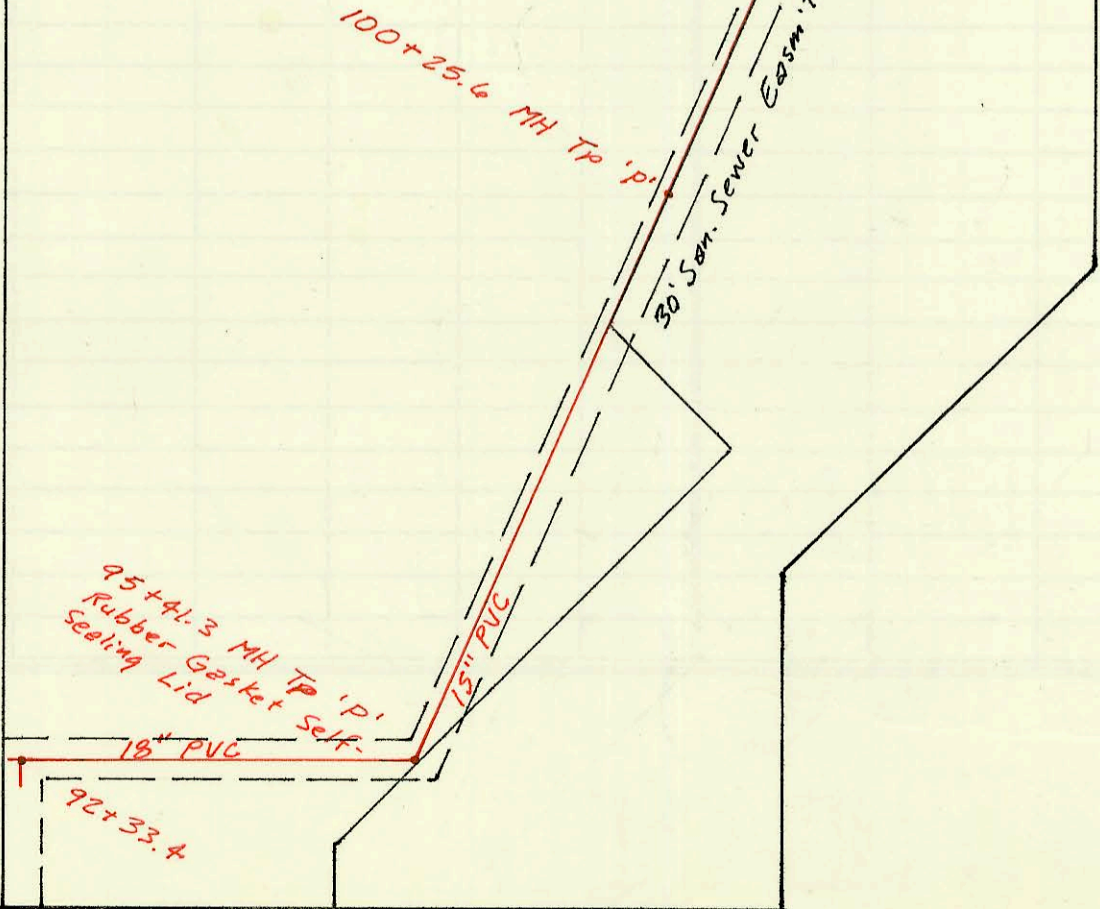
New MH built with 15" main with 15" stub. Do not connect any sewer pipes until they are checked by engineer. 12-7-74

MH Type 'P' 4" stub W Top elev = 191.40 Flow = 181.05 4" flow 181.97

MAIN 24, WAR INDUSTRIES SEWER PHASE I 468-76-245-81477-000-000-001 Built By B.A. DURST Booked 10-87 from JNL-100

EASTMINSTER ADDN.

WEBB ROAD



CONSTRUCTION RECORD

SERVICE RECORD

MAIN 24
Line 1
(cont)

STATION	ELEVATION		Depth	MANHOLE	4-INCH "Y" BRANCHES		No. of Permit		House Number		DATE OF PERMITS	
	Ground	Grade			North West	South East	North West	South East	North West	South East	North West	South East
	PHASE I (CONT)											
93+00	190.0	176.83	13.2									
94+00	189.5	177.02	12.5									
95+00	190.1	177.22	12.9									
	188.42	177.30 OUT 177.40 IN	11.1	95+41.3								
96+00	189.5	177.59	11.9									
97+00	190.7	177.91	12.8									
98+00	191.2	178.23	13.0									
99+00	191.9	178.56	13.3									
100+00	192.0	178.88	13.1									
	192.43	178.96 OUT 179.02 IN	13.5	100+25.6	6" MHTAP		17521		1458 Webb Rd		12-23-86	
101+00	191.3	179.26	12.0									
102+00	191.4	179.59	11.8									
103+00	190.1	179.92	10.2									
	190.22	179.94 OUT 179.89 IN	10.3	103+07.6								
104+00	189.5	180.21	9.3									
105+00	188.8	180.55	8.3									
106+00	190.9	180.89	10.0									
107+00	190.2	181.23	9.0									
108+00	191.3	181.57	9.7									
	191.73	181.60 OUT 181.57 IN	10.1	108+09.1	8" stub W							
109+00	192.0	181.84	10.2									
110+00	192.5	182.13	10.4									
111+00	192.6	182.42	10.2									
112+00	193.4	182.72	10.7									
113+00	193.5	183.01	10.5									
	193.95	183.17 OUT 183.27 IN	10.8	113+54.1								
114+00	194.4	183.41	11.0									
115+00	194.6	183.72	10.9									
	195.74	183.89 OUT 183.85 IN	11.9	115+54.2								
116+00	194.3	184.02	10.3									
117+00	195.5	184.39	11.1									
	197.06	184.72 OUT 184.69 IN	12.3	117+90.7								
118+00	195.9	184.72	11.2									
119+00	196.5	185.01	11.5									
	197.20	185.15 OUT 185.11 IN	12.1	119+49.6								
120+00	195.7	185.27	10.4									
121+00	197.6	185.58	12.0									
122+00	199.5	185.89	13.6									
	201.26	185.98 OUT 186.17 IN	15.3	122+30.3								
123+00	202.0	186.41	15.6									
	203.03	186.60 OUT 187.40 IN	16.4	123+56.0	8" stub E							