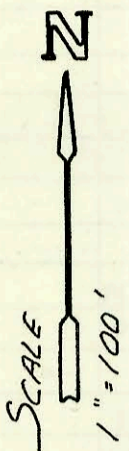
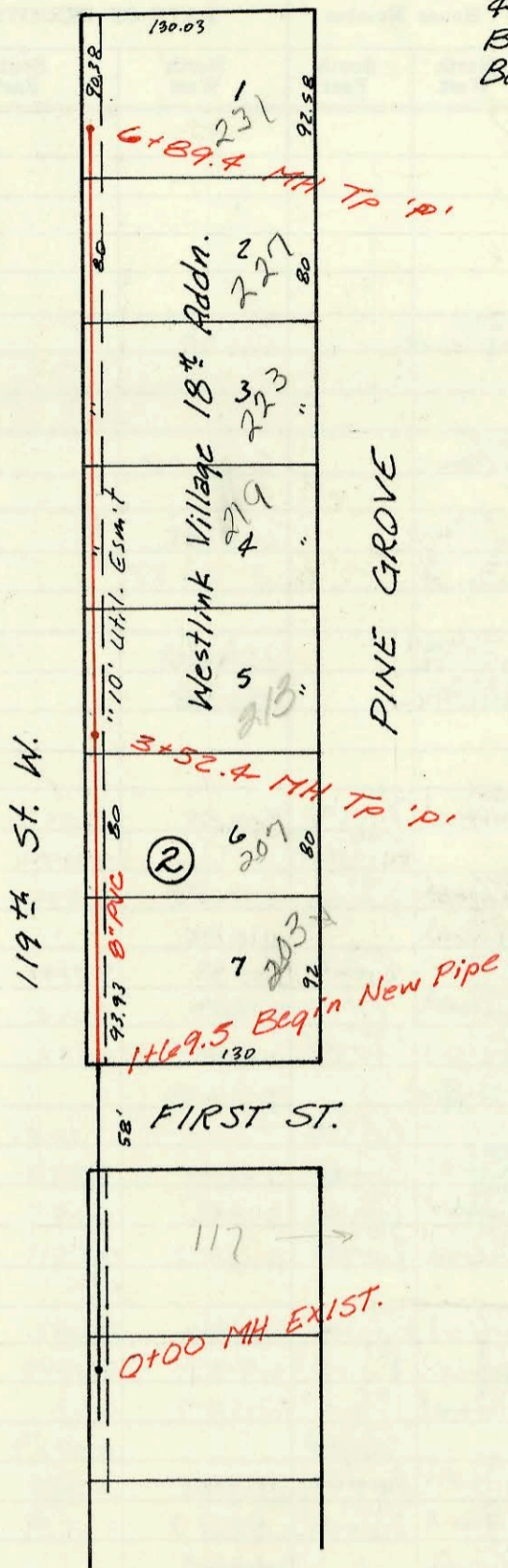
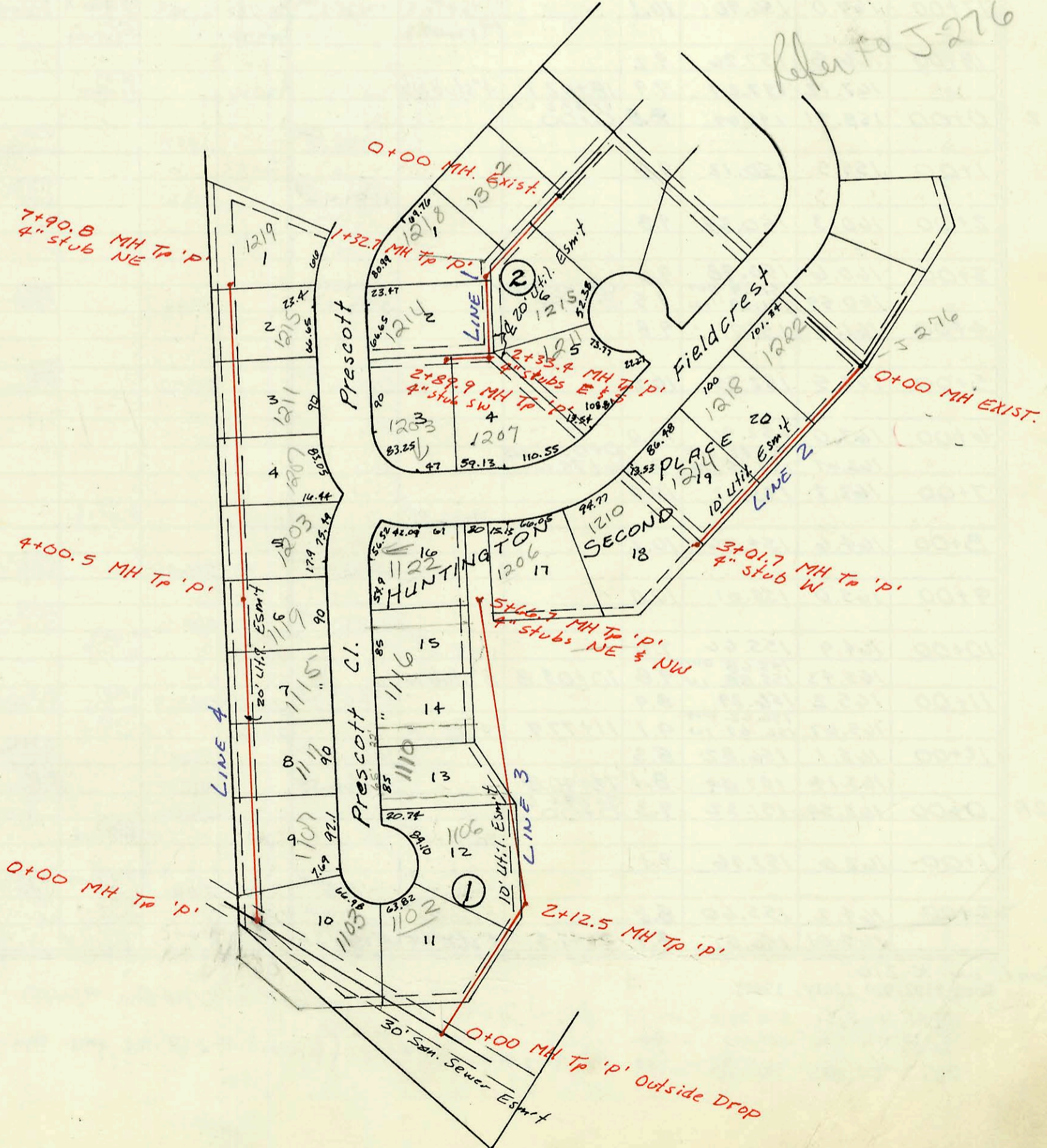
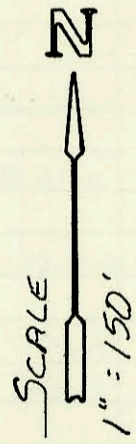


O'NEIL

LAT 12, MAIN 9, SW INTERCEPTOR
468-76-245-81690-000-000-001
Built By Wildcat Const.
Booked 10-7-87 from LES-17



LAT 240, SW INTERCEPTOR
468-76-245-81691-000-000-001
Built By MID-STATES CONST.
Booked 11-17-87 From BR-111



Refer to J-276

CONSTRUCTION RECORD							SERVICE RECORD					
STATION	ELEVATION		Depth	MANHOLE	4-INCH "Y" BRANCHES		No. of Permit		House Number		DATE OF PERMITS	
	Ground	Grade			North West	South East	North West	South East	North West	South East	North West	South East
LAT 12, MAIN 9, SWI												
0+00	158.8	145.68	13.1	EXIST								
1+00	158.8	146.36	12.4	0+00								
2+00	158.5	146.48	12.0		2+17.4		19442		203 N Pine Grove		10-29-87	
3+00	158.8	146.88	11.9			3+21.4 TAP	23570		307 N Pine Grove		7-20-89	
4+00	159.39	147.09	12.3	3+52.4								
4+00	159.2	147.27	11.9			4+12.4 TAP	26522		213 Pine Grove		11-14-90	
5+00	159.5	147.63	11.9			4+86.4 TAP	20254		219 Pine Grove		4-4-89	
6+00	160.0	148.00	12.0			5+68.4 TAP	26062		223 Pine Grove		9-4-90	
6+00	160.57	148.33	12.2	6+89.4		6+11.4 TAP	25393		227 Pine Grove		5-21-90	
						6+70.9 TAP	20073		231 Pine Grove		12-21-88	
LAT 240, SWI												
LINE 1												
0+00	159.33	146.04	13.3	EXIST								
1+00	158.9	146.59	12.3			0+60.0 TAP	19108		1302 Prescott		9-22-87	
	159.61	146.77 OUT	12.8	1+32.7		4" SDR 35 1+59.4 TAP	92-43991		1215 N. Fieldcrest		12-4-92	
2+00	158.2	147.51	10.7				19772		1219 Prescott		12-2-87	
	159.27	147.76 OUT	11.5	2+33.7	4" stub S	4" stub E	21458	20788	1207 Fieldcrest	1211 Fieldcrest	9-9-88	6-3-88
	159.63	148.88 IN	8.8	2+89.9	4" stub SW		21377		1208 Fieldcrest		8-26-88	
LINE 2												
0+00	153.81	143.84	10.0	EXIST								
1+00	154.4	144.81	9.8			0+52.0 TAP	21314		1242 Fieldcrest		3-16-88	
2+00	154.5	145.78	8.7			1+72.0 TAP	21313		1218 Fieldcrest		8-16-88	
3+00						4" SDR 35 2+64.9 TAP	302567		1214 Fieldcrest		8-19-91	
	155.34	146.76	8.6	3+01.7	4" stub W		26489		1210 Fieldcrest		11-7-90	
LINE 3												
0+00	147.84	141.05	6.8	EXIST								
1+00	152.1	142.41	9.7			0+74.0 TAP	22839		1102 Prescott		4-4-89	
2+00	155.0	143.78	11.2									
	155.50	143.95 OUT	11.6	2+12.5		2+73.0 TAP	22273		1105 Prescott		10-13-88	
3+00	154.5	145.12	9.4									
4+00	159.4	146.36	9.0			4" SDR 35 3+63.5 TAP	9128647		1110 Prescott		8-2-91	
5+00	156.0	147.61	8.4			4" MC 40 4+71.7 TAP	92284867		1116 N Prescott		9-11-92	
	157.40	148.44	9.0	5+66.7	4" stub NW	4" stub NE	22647	1997	1102 Prescott	1206 Fieldcrest	3-2-89	1-27-92
LINE 4												
0+00	143.75	136.87	6.9	EXIST								
1+00	147.0	139.60	7.4			0+06.6 TAP	79974		1103 Prescott		1-25-88	
						0+94	19349		1107 Prescott		10/20/87	
2+00	150.1	142.34	7.8			4" SDR 35 2+18.0 TAP	9122337		1111 N. Prescott		5-17-91	
3+00	153.6	145.07	8.5			3+20.5 TAP	20002		1115 N. Prescott		1-26-88	
4+00						3+94.5 TAP	20254		114 N. Prescott		3-10-88	
	156.10	147.82 OUT	8.3	4+00.5		4+47.5 TAP	20789		1203 Prescott		6-3-88	
5+00	156.9	148.90	8.0			5+58.3 TAP	20123		1201 Prescott		12-0-88	
6+00	158.9	149.84	9.1			6+38.8 TAP	20073		1211 N. Prescott		2-11-88	
7+00	160.0	150.78	9.2			7+68.8 TAP	21574		1215 Prescott		9-27-88	
	160.79	151.63	9.2	7+90.8	4" stub NE		21685		1219 Prescott		10-13-88	
LAT 237, SWI (cont)												
LINE 2B												
0+00	163.67	153.47	10.2	EXIST								
1+00	164.6	154.88	9.7			0+78.0 TAP	20443	20161	2115 Shefford	2035 Shefford	4-12-88	2-23-88
						1+38.2 TAP	21584	20033	2111 Shefford	2024 Shefford	9-19-88	5-6-88
						1+98.0 TAP		20634	2043 Shefford			5-6-88
2+00	165.5	156.28	9.2			2+26.7 TAP	20698		2104 Shefford		5-18-88	
	165.59	156.99	8.6	2+50.2	4" stub NE	4" stub SE	19556	19557	2103 Shefford	2047 Shefford	11/10/87	11/10/87