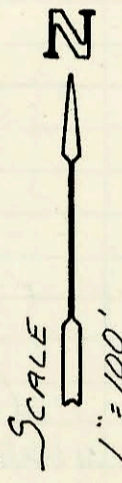


LAT 237, SW. INTERCEPTOR SEWER
468-76-245-81668-000-000-001
Built By Mid-States Const.
Booked 11-10-87 From BR-111

Annexed into City per ord. # 40990 and # 40989 6/15/90

21st ST. NO.



4-37

10+03.8 MH Tr 'C'
8" stub N.

6+75.6 MH Tr 'C'
0+00 Line 2B

3+25.4 MH Tr 'C'
0+00 Line 2A

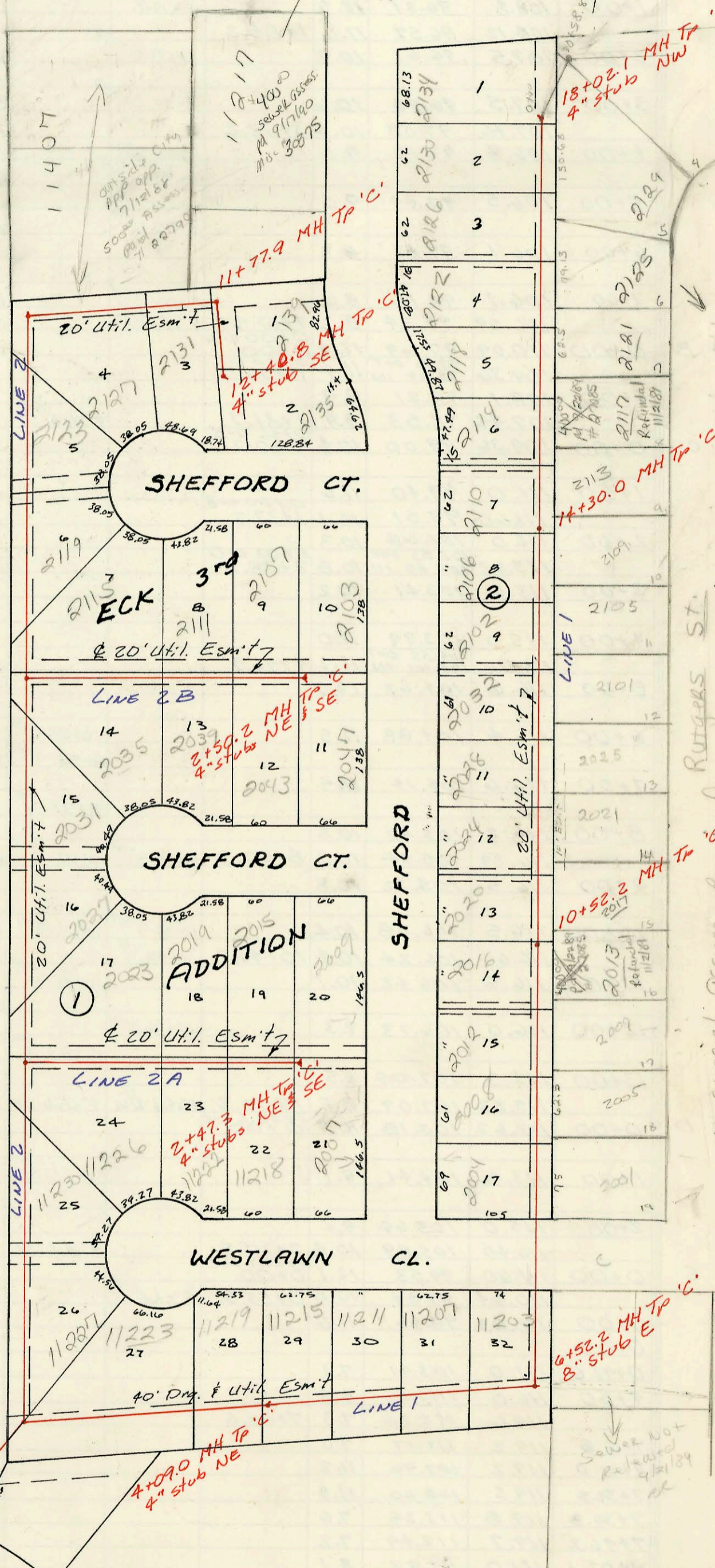
1+87.2 MH Tr 'C'
0+00 Line 2

0+00 MH Tr 'C'
8" stubs SW & SE

SHEFFORD CT.

SHEFFORD CT.

WESTLAWN CL.



18+02.1 MH Tr 'C'
4" stub NW

1+30.0 MH Tr 'C'

10+52.2 MH Tr 'C'

6+52.2 MH Tr 'C'
8" stub E

No special Assess. required because lots were reassessed in with Timber Ridge Add in Oct of 89. (11/21/89)

11/17 W 21st - 9/17/90 - \$400 Main + Lateral Assessment paid per Misc # 30375.

CONSTRUCTION RECORD						SERVICE RECORD						
STATION	ELEVATION		Depth	MANHOLE	4-INCH "Y" BRANCHES		No. of Permit		House Number		DATE OF PERMITS	
	Ground	Grade			North West	South East	North West	South East	North West	South East	North West	South East
LAT 237 LINE 1 0+00	159.84	145.03	14.8	0+00	8" stub SW	8" stub SE						
1+00	159.5	145.51	14.0									
	158.51	145.93 OUT 145.97 IN	12.6	0+00 L-2 1+87.2								
2+00	158.7	146.42	12.3				1952		11223 Westlawn		11/16/87	
3+00	160.5	146.87	13.6									
4+00	161.8	147.32	14.5									
	162.16	147.36 OUT 147.56 IN	14.8	4+09.0	4" stub NE		20779		11215 Westlawn		6-2-88	
5+00	162.4	147.98	14.4		4+92.0 TAP		20304		11217 Westlawn		3-21-88	
6+00	163.2	148.45	14.8		5+58.2 TAP		22194		11207 Westlawn		12/09/88	
	163.45	148.69 OUT 148.67 IN	14.8	6+52.2	6+59.8 TAP	8" stub E	20107		11203 Westlawn		2-16-88	
7+00	164.0	149.29	14.7									
8+00	164.2	150.60	13.6		8+22.2 TAP	4" SDR 35 8+15.2 TAP	20160	7-19-90	2004 Shefford	2001 Rutgers	2-23-88	3-25-91
						8+97.2 TAP	25778			2005 Rutgers		7-23-90
9+00	165.2	151.90	13.3		9+02.2 TAP	4" SDR 35 9+53.2 TAP	21252	2-7-81	2009 Shefford	2004 Rutgers	8-4-88	3-27-91
					9+48.2 TAP		21321		2012 Shefford		11/01/88	
10+00	166.0	153.20	12.8		10+36.7 TAP	10+46.2 TAP	22614	2-22-89	2013 Shefford	2013 Rutgers	2-22-89	9-21-89
	166.28	153.88 OUT 153.98 IN	12.4	10+52.2	10+79.2 TAP	4" SDR 35 11+14.2 TAP	22564	7-25-87	2011 Shefford	2011 Rutgers	2-14-89	6-28-91
11+00	166.5	154.20	12.3		11+65.2 TAP	11+64.2 TAP	21820	2-6-85	2004 Shefford	2001 Rutgers	11/01/88	1-7-91
					11+93.2 TAP		20103		2007 Shefford		2-16-88	
12+00	166.9	154.66	12.2		12+22.2 TAP	4" SDR 21 12+20.2 TAP	21329	2-27-85	2002 Shefford	2005 Rutgers	7-22-88	7-22-91
					12+18.0 TAP	12+70.0 TAP	21329	2-5-84	2002 Shefford	2001 Rutgers	7-22-88	7-29-90
13+00	166.7	155.11	11.6		13+18.0 TAP	4" SDR 35 13+47.4 TAP	21329	2-5-84	2002 Shefford	2005 Rutgers	5-18-88	4-1-91
					13+92		19582	2-5-80	2006 Shefford	2009 Rutgers	11/16/87	7-9-90
14+00	166.5	155.57	10.9		14+22.2 TAP	14+73.0 TAP	19444	2-6-84	2110 Shefford	2113 Rutgers	10/21/87	2-4-91
	166.61	155.71 OUT 155.91 IN	10.9	14+30.0	14+73.0 TAP		22688	2-21-87	2114 Shefford	2117 Rutgers	3-9-89	9-21-89
15+00	166.4	156.17	10.2		15+29.0 TAP	15+29.0 TAP	19287		2118 Shefford		10/09/87	
					15+94		19287		2118 Shefford		10/09/87	
16+00	166.3	156.53	9.8		16+16.5 TAP		19515	2-4-81	2122 Shefford	2125 Rutgers	11/05/87	11-21-89
					16+47.1 TAP		19277	2-22-88	2126 Shefford	2129 Rutgers	10/08/87	9-21-89
17+00	167.0	156.90	10.1		17+25.1 TAP		19278		2130 Shefford		10/09/87	
18+00	166.5	157.26	9.2		18+02.1 TAP	4" stub NW	19286		2134 Shefford		10/09/87	
LIN 2 0+00	158.51	149.69	8.8	0+00								
1+00	159.5	150.12	9.4									
2+00	160.3	150.55	9.8									
3+00	160.6	150.98	9.6									
	160.59	151.09 OUT 151.29 IN	9.5	0+00 L-2 3+25.4			19994		2007 Shefford			1-26-88
4+00	161.5	151.74	9.8									
5+00	162.5	152.35	10.2									
6+00	163.0	152.96	10.0									
	163.67	153.42 OUT 153.55 IN	10.3	0+00 L-2 6+75.6								
7+00	163.7	153.71	10.0									
8+00	164.6	154.36	10.2									
9+00	165.0	155.01	10.0									
10+00	164.9	155.66	9.2									
	165.43	155.68 OUT 155.88 IN	9.8	10+03.8	8" stub N		21064		11407 w. 21st		7-13-88	
11+00	165.2	156.29	8.9				21064		11211 w. 21st	2131 Shefford	11-14-90	11-18-88
	165.67	156.62 OUT 156.67 IN	9.1	11+77.9	11+83.9 TAP		20526		11217 w. 21st		11-14-90	
12+00	165.1	156.82	8.3									
	165.14	157.09	8.1	12+40.8	4" stub SE		20697		2139 Shefford		5-18-88	
LIN 2A 0+00	160.59	151.32	9.3	0+00								
1+00	162.6	153.46	9.1									
2+00	164.2	155.60	8.6									
	165.01	156.61	8.4	2+47.3	4" stub NE	4" stub SE	21065	2-12-84	2019 Shefford	18222 Westlawn	10-04-88	8-4-88
							21288	2-10-80	2012 Shefford	11216 Westlawn	7-28-88	6-30-88
							20207	2-22-86	2009 Shefford	2007 Rutgers	3-1-88	8-1-88

11407 w. 21st
500⁰⁰ Asses too
paid 7-12-88
Req# 22790
outside city
app approved
7/12/88.

11217 w. 21st
400⁰⁰ Asses
9/17/88

Cont. on K-216
Form #192-020 (July, 1981)

11407 w. 21st outside city app. approved 7/12/88. 500⁰⁰ Assessment paid per Misc #22790
See above for connection info.
2117 N Rutgers - 400⁰⁰ Asses. fee paid 9-22-89 per Misc #27085 (refunded 11-2-89 a/c incl. this area in assessment for
Timber Ridge Add.