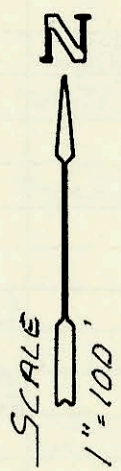
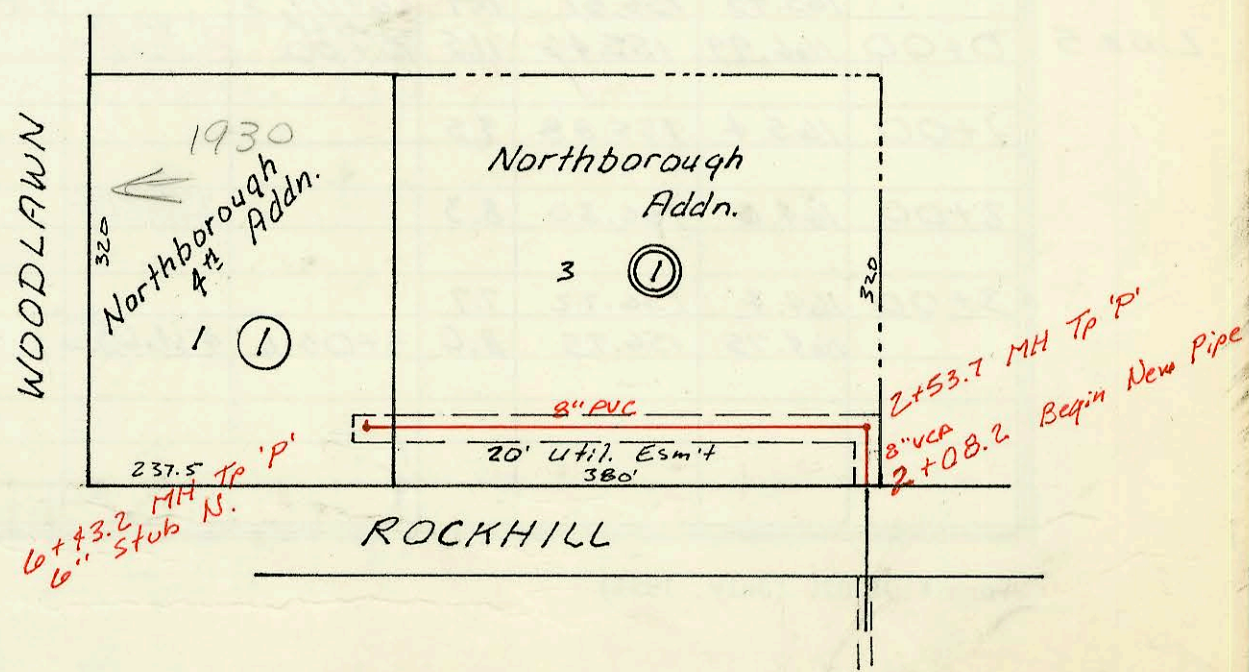
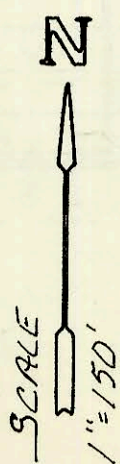


LAT 203, SW. INTERCEPTOR
 46B-76-245-81444-000-000-001
 Built By Utility Contr.
 Booked 12-3-87 From DRH-10



LAT 109, MAIN 2, SS # 12
 46B-76-245-81676-000-000-001
 Built By Stannard Const.
 Booked 12-4-87 From AG-20



CONSTRUCTION RECORD						SERVICE RECORD						
STATION	ELEVATION		Depth	MANHOLE	4-INCH "Y" BRANCHES		No. of Permit		House Number		DATE OF PERMITS	
	Ground	Grade			North West	South East	North West	South East	North West	South East	North West	South East
LAT 203, SW I												
LINE 1	0+00	146.15	138.25	7.9	EXIST. 0+00							
	1+00	147.2	138.65	8.6		4" SDR 35 1+64.2 TAP		91-30036-7		115 N Prescott		8-15-91
	2+00	147.9	139.05	8.9								
		148.56	139.25 OUT 139.26 IN	9.3	2+51.2							
	3+00	148.3	139.43	8.9		3+37.1 TAP		25615		119 N Prescott		6-22-90
		149.15	139.67	9.5	3+68.7	4" SDR 35 4" stub E		92-1973-7		123 N Prescott		5-28-92
LINE 2	0+00	149.68	138.89	10.8	0+00							
	1+00	150.9	139.88	11.0		1+01.5 TAP		22591	26169	106 Prescott	114 N Prescott	2-15-89
		151.11	140.46	10.7	1+58.0	4" stub W		20089		115 N Prescott		2-16-88
LINE 3	1+65.4	152.8	138.81	14.0								
	2+00	152.5	138.88	13.6								
		152.89	138.90 OUT 139.04 IN	14.0	2+10.1	8" stub E						
		152.08	139.25	12.8	2+70.7	4" SDR 35 4" stub NW		95-1233-7	94-2252-7	11007 W 1st	11503 W 1st	1-20-95
LINE 4	0+00	152.89	139.14	13.8	0+00							
	1+00	152.1	139.42	12.7		4" SDR 35 1+60.4		23087		11011 W 1st		1-11-95
	2+00	151.8	139.69	12.1				22497			130 Prescott	7-6-89
	3+00					4" SDR 35 2+58.4		96-8716-7		11015 W 1st		6-4-96
		151.89	139.98 OUT 140.05 IN	11.9	3+03.4	3+09.4		21657		906 Prescott		9-23-88
	4+00	151.0	140.36	10.6		4" SDR 35 3+61.4 TAP		2183		308 N Prescott		2-27-92
	4+96.9	150.5	140.68	9.8								
	5+07.7											
LINE 5	0+00	151.89	140.05	11.8	3+03.4 L-4 0+00							
	1+00	150.6	140.34	10.3		0+76.8 TAP		22131		202 Prescott		5-11-89
		150.34	140.60	9.7	1+87.6	1+69.0 TAP		20090	2080	146 Prescott	134 N Prescott	2-16-88
	2+00	149.9	140.64	9.3								
		150.10	140.76	9.3	2+36.3	1+95.6 TAP		22088	25156	138 N Prescott	112 N Prescott	11-28-88
LAT 109, MAIN 2, SS # 12												
	2+08.2	209.0	199.33	9.7								
		208.69	199.57 OUT 200.60 IN	9.1	2+53.7							
	3+00	210.0	201.35	8.7								
	4+00	211.5	202.98	8.5								
	5+00	213.2	204.61	8.6								
	6+00	214.5	206.24	8.3		crease in pipe 6+35.7 TAP		169917 18798		1930 R Woodlawn		6-24-96 7-13-87
		215.14	206.94	8.2	6+43.2	6" stub N						
LAT 5, MAIN 24, WIS (CONT)												
LINE 3	0+00	182.46	174.40	8.1	3+54.7 L-2 0+00							
	1+00	184.1	174.97	9.1								
		186.25	175.14	11.1	1+29.0							
	2+00	185.83	176.11	9.7	2+01.0	2+23.0 TAP		24906	20223	8710 Woodcrest	8702 Woodcrest	3-7-90
	3+00	186.2	176.80	9.4		3+95.7 TAP		23345 19937		8807 Subside		6-20-89 1-12-88
	4+00	187.0	177.50	9.5		4+40.7 TAP		26804		8810 Woodcrest		12-26-90
						4+63.2 TAP		23918		8831 Subside		9-20-89
	5+00	187.5	178.20	9.3		5+19.7 TAP		22396		8806 Woodcrest		1-12-89
		189.49	178.86	10.6	5+94.7	4" stub NW		223517	22754	8821 Subside	8802 Woodcrest	3-12-92