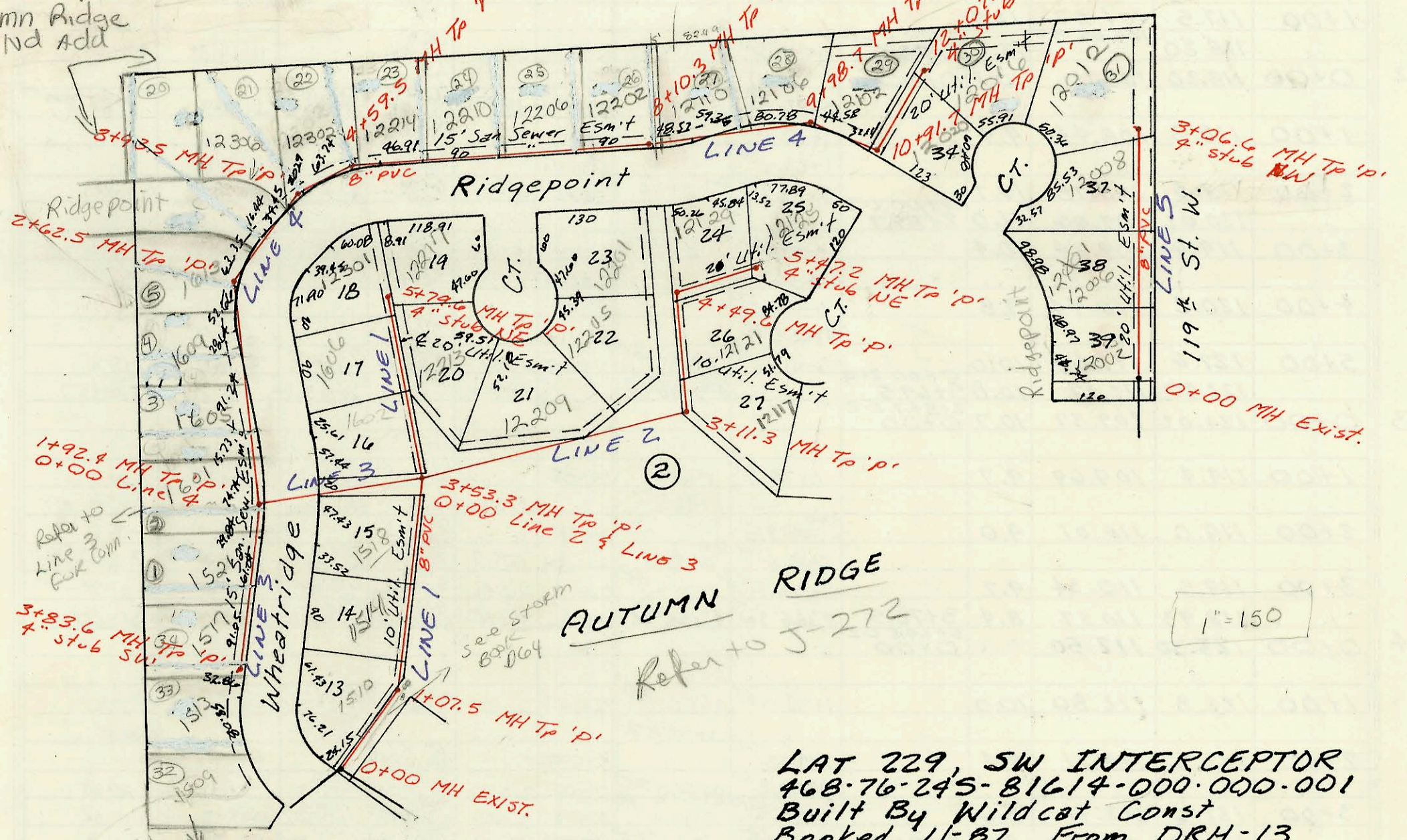


Re-plot
3-12

this lot has
5' of lot 26

Autumn Ridge
2nd Add



Refer to
Line 3
for Com.

see storm
book
0064

Refer to J-272

1" = 150'

LAT 229, SW INTERCEPTOR
468-76-245-81614-000-000-001
Built By Wildcat Const
Booked 11-B7 From DRH-13

WP

CONSTRUCTION RECORD						SERVICE RECORD						
STATION	ELEVATION		Depth	MANHOLE	4-INCH "Y" BRANCHES		No. of Permit		House Number		DATE OF PERMITS	
	Ground	Grade			North West	South East	North West	South East	North West	South East	North West	South East
LAT 29, SW I												
LINE 1 0+00	164.85	148.38	16.5	EXIST. 0+00								
					0+95.1 4" Riser W		26940		1510 Wheatridge		1-2-89	
1+00	164.3	148.83	15.5									
	164.09	148.86 OUT 148.88 IN	15.2	1+07.5								
2+00	161.3	149.05	12.3		1+56.0 4" Riser W 2+56.2 4" Riser W TAP		20894		1514 Wheatridge 1518 Wheatridge		7-5-88 6-20-88	
3+00	161.3	149.23	12.1									
	161.95	149.33 OUT 152.43 IN	12.6	3+53.3								
4+00	161.3	152.94	8.4		3+99.3 TAP		26023		1602 Wheatridge		8-27-90	
					4+97.6 TAP			24108	1606 Wheatridge	12213 Ridgepoint		10-16-89
5+00	164.3	153.70	10.6		5+08.6 TAP 4" SDR 22 PVC 5+55.6 TAP		20923		12301 Ridgepoint	12217 Ridgepoint		6-23-88
LINE 2 0+00	161.95	152.59	9.4	0+00	4" SDR 22 PVC 3+53.3 L-1		21355	20932	12301 Ridgepoint	12217 Ridgepoint		12-4-91 6-23-88
					0+43.0 TAP		22133		12209 Ridgepoint			12-02-88
1+00	160.8	153.00	7.8									
2+00	161.3	153.41	7.9									
3+00	161.0	153.82	7.2									
	162.17	153.87 OUT 154.04 IN	8.3	3+11.3	3+67.3 TAP		26254	91-3372-7	12205 Ridgepoint	12211 Ridgepoint		10-2-90 7-27-91
4+00	163.0	154.37	8.6		4+43.6 TAP		20174	99-11987-7	12201 Ridgepoint	12111 Ridgepoint		5-28-89
	164.60	154.55 OUT 154.67 IN	10.1	4+49.6	4+92.6 TAP		22968		12129 Ridgepoint			4-21-89
5+00	164.2	155.78	8.4									
	165.00	156.81	8.2	5+47.2	4" SDR 22 PVC 3+53.3 L-1			26279	12125 Ridgepoint			3-15-88
LINE 3 0+00	161.95	149.53	12.4	0+00	0+06.0 TAP		20124		1601 Wheatridge			2-8-88
1+00	165.0	149.82	15.2									
	165.75	150.09 OUT 154.05 IN	15.7	1+92.4								
2+00	165.5	154.18	11.3		2+80.4 TAP		24209		1521 Wheatridge			11-10-89
3+00	166.7	155.93	10.8		3+70.6 TAP		23325		1517 Wheatridge			4-28-89
	166.62	157.39	9.2	3+83.6	4" SDR 22 PVC 1+92.3 L-3		2084		1513 Wheatridge			2-11-92
LINE 4 0+00	165.75	150.15	15.6	0+00	0+10 4" Riser W 0+96.0 TAP 4" Riser W 1+80 4" Riser W							
1+00	164.0	150.46	13.5				20125		1605 Wheatridge			2-18-88
							22243		1609 Wheatridge			12-15-88
2+00	162.7	150.77	11.9									
	162.00	150.96	11.0	2+62.5	2+55.5		24478		1613 Wheatridge			12-19-89
3+00	161.6	151.06	10.5									
	162.60	151.31 OUT 152.71 IN	11.3	3+93.5								
4+00	162.4	152.74	9.7		4+39.5 TAP		21339		12302 Ridgepoint			8-19-88
	162.77	153.03 OUT 153.17 IN	9.7	4+59.5	4+23.5 TAP		21528		12214 Ridgepoint			9-20-88
5+00	163.5	153.33	10.2									
							20930		12210 Ridgepoint			6-23-88
6+00	164.7	153.74	11.0									
					4" SDR 35 6+90.7 TAP		1896		12206 Ridgepoint			1-15-92
7+00	164.5	154.14	10.4									
					4" SDR 35 7+98.8 TAP		92-16228-7		12202 Ridgepoint			7-28-92
8+00	163.3	154.55	8.8									
	163.42	154.59 OUT 154.64 IN	8.8	8+10.3	9+09.3 TAP		21776		12110 Ridgepoint			10-25-88
9+00	163.4	154.95	8.5		9+40.3 TAP		22261		12110 Ridgepoint			12-20-88
	163.75	155.29 OUT 155.35 IN	8.5	9+98.7								
10+00	163.98	155.62 OUT 155.88 IN	8.4	10+91.7			20977		12102 Ridgepoint			6-27-88
11+00	163.8	155.93	7.9									
					4" SDR 35 11+71.3 TAP		91-3374-7		12220 Ridgepoint			12-17-91
12+00	164.8	156.47	8.3									
	165.45	156.51	8.9	12+07.3	4" SDR 35 0+29.0 TAP			20460	12016 Ridgepoint			4-13-88
LINE 5 0+00	166.99	155.46	11.5	EXIST. 0+00			92-21347-7		12052 Ridgepoint			8-27-92
1+00	165.4	155.88	9.5				20403		12006 Ridgepoint			4-5-88
2+00	164.6	156.30	8.3		4" SDR 35 2+18.0 TAP		91-23720-7		12008 Ridgepoint			6-11-91
3+00	164.4	156.72	7.7									
	164.75	156.75	8.0	3+06.6	4" SDR 35 4" SDR 22 PVC		20817		12012 Ridgepoint			6-17-88