

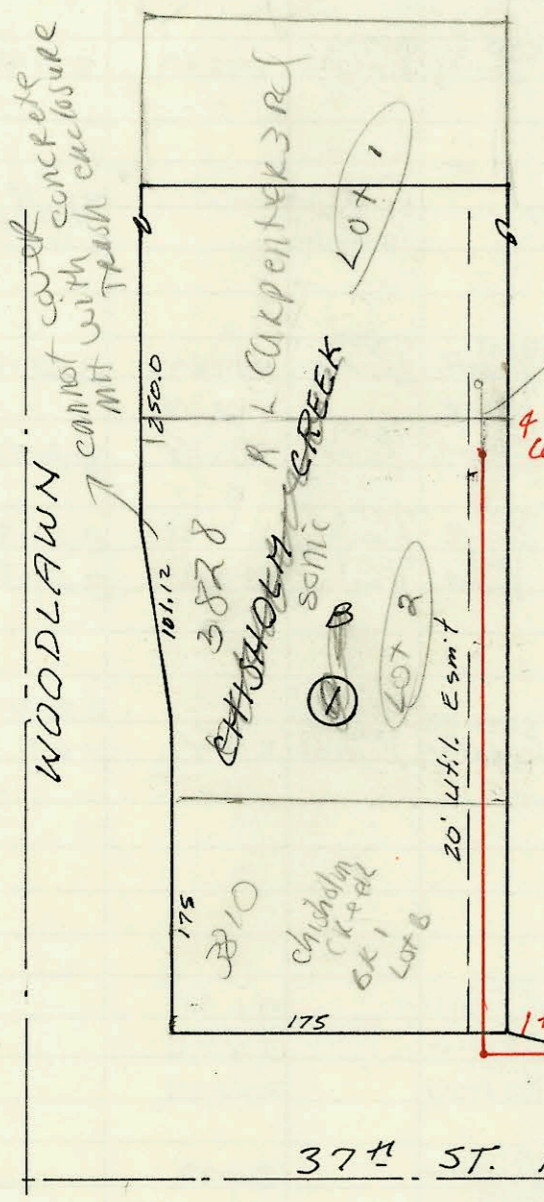
LAT 21, MAIN 22, W.I.S.  
468-76-245-81270-000-000-001  
Built By Mid-States Const.  
Booked 12-87 From MGP-28

See Letter #11  
Re: crossing Kaneb  
Pipeline ease to  
connect to Line 2  
Kaneb must be advanced  
24 hrs in advance  
of any sewer repair  
of any 3/8" or  
EX

Note: advise PL  
that there is  
a 3" concrete  
encasement where  
the 4" leaders  
connect to  
main  
see 13 B1

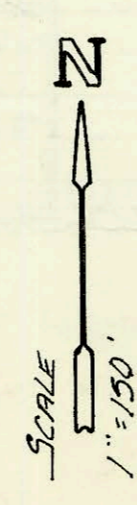
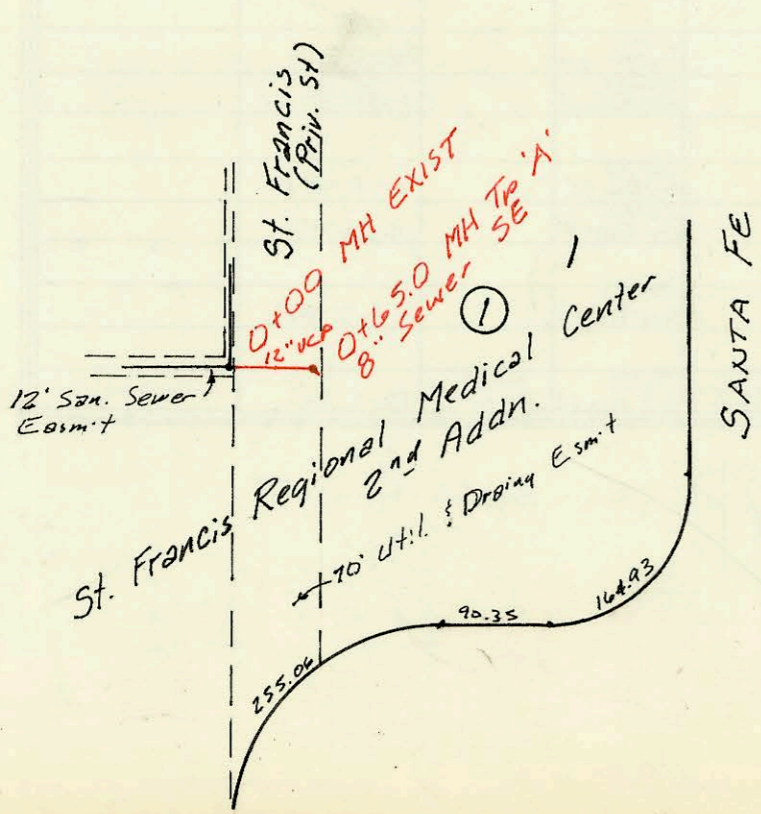
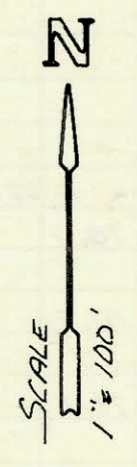
See 1243  
for Lot 5

OK with  
sewer main  
for make new  
top in street  
use L and  
need copy of  
perm. from  
7-23-87  
EX



Proposed  
2x15' let woodlawn  
lot 180 new  
not et. with  
12/22/87

Priv. San. Sewer for Lot B, Blk 1, CHISDLM CREEK  
468-76-245-80001-000-000-139  
Built By Stannard Const  
Booked 12-15-87 From AS Built



Priv. San. Sewer Ext. for St. Francis  
Regional Psychiatric Center  
468-76-245-80001-000-000-120  
Built By Utility Contr.  
Booked 12-16-87 From BR-123

CONSTRUCTION RECORD							SERVICE RECORD					
STATION	ELEVATION		Depth	MANHOLE	4-INCH "Y" BRANCHES		No. of Permit		House Number		DATE OF PERMITS	
	Ground	Grade			North West	South East	North West	South East	North West	South East	North West	South East
LAT 21, MAIN 22, WIS												
LINE 1	0+00	214.06	202.03	12.0	EXIST							
		215.04	202.99 OUT 204.71 IN	12.1	0+49.5		0+57.5 TOP	26012		9495 Lakepoint		8-23-90
	1+00	215.0	205.91	9.1			4" SDR 35 0+71.5 top	2083		9409 Lakepoint		2-11-92
		215.29	206.90 OUT 207.00 IN	8.4	0+00 L-2 1+41.5							
	2+00	215.3	207.27	8.0								
		214.34	207.69 OUT 207.75 IN	6.7	2+90.5							
3+00	214.0	207.79	6.2									
4+00	213.2	208.20	5.0									
					4+64.3		19943		9414 Woodspring		1-12-88	
5+00	220.5	208.60	11.9			5+55.3 TOP	18582		9419 WOODSPRING		6-25-87	
						5+89.3 TOP	18580		9406 WOODSPRING		6-25-87	
6+00												
	219.31	209.01 OUT 209.26 IN	10.3	6+00.3								
	218.91	209.52	9.4	6+37.6		4" stub SE						
LINE 2	0+00	215.29	207.06	8.2	0+00		4" SDR 35 66.0 top	92-1989-7		9413 Lakepoint		2-11-92
	1+00	215.6	207.72	7.9								
							1+65.4 TOP	24460		9417 Lakepoint		12-1-87
	2+00	216.2	208.38	7.8		2+07.4 TOP		18667		9418 WOODSPRING		7-9-87
		216.91	208.53 OUT 208.70 IN	8.4	2+22.4							
	3+00	217.7	209.12	8.6		4" SDR 40 R/C 3+19.4 TOP	2+99.5 f" SERV. 56.2 S	92-17487-7		9501 Lakepoint		7-31-92
4+00	219.0	209.66	9.3		4" SDR 21 / 5" SDR 35	3+99.5 f" SERV. 55.6 S	91-2789-7	19118	9505 Lakepoint	9420 WOODSPRING	7-19-91	9-23-87
	220.39	209.98 OUT 210.16 IN	10.4	4+59.3	4" SDR 35 4+95.3 TOP	4" SERV. 56.5 S	92-9764-7	19117	9504 Lakepoint	9438 WOODSPRING	4-6-92	9-23-87
5+00	220.5	210.47	10.0		4" SDR 21 / 5+61.6 top	5+27.7 f" SERV. S. 5+87.7 f" SERV. S.	91-2694-7		9513 Lakepoint		7-5-91	
6+00	222.0	211.23	10.8									
	224.09	211.82	12.3	6+77.6		4" SDR 40 6+54.6		96-1078-7		9506 WOODSPRING		7-8-96
LINE 3	0+00	222.42	212.17	10.3	EXIST 0+00							
	1+00	221.8	212.56	9.2								
	221.98	212.58	9.4	1+05.9		4" SDR 35 ME 4" stub NW 4" stub NE		95865-7		9467-5 WOODSPRING		1-17-95
LINE 4	0+00	223.59	213.23	10.4	EXIST 0+00							
		223.96	213.43 OUT 213.42 IN	10.5	0+53.2							
1+00	222.5	213.67	8.8									
2+00	221.8	214.11	7.7									
	221.87	214.52	7.4	2+95.7		4" stub E		97-1922-7		9397 WOODSPRING		7-8-97
Priv. S.S. for Lot B, Blk 1, CHISHOLM CREEK												
0+00	178.30	169.40	8.9	0+00								
1+00	179.4	171.45	8.0									
	181.27	172.77 OUT 172.82 IN	8.5	1+64.6								
2+00	181.2	173.20	8.0									
								19107		3810 WOODLAWN		9-22-87
3+00	182.5	174.28	8.2									
4+00	181.0	175.36	5.6					92-2164-7		3828 WOODLAWN		2-12-98
	180.82	176.19	4.6	4+76.7								
Priv. S.S. Ext. for St. Francis Regional Psychiatric Center												
0+00	115.91	108.50	7.4	EXIST 0+00								
	114.60	109.90	4.7	0+65.0		8" Serv. SE		18493		St. Francis Psych. Center		6-26-87