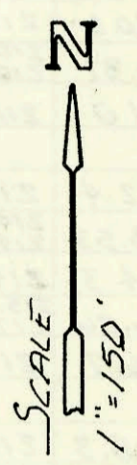
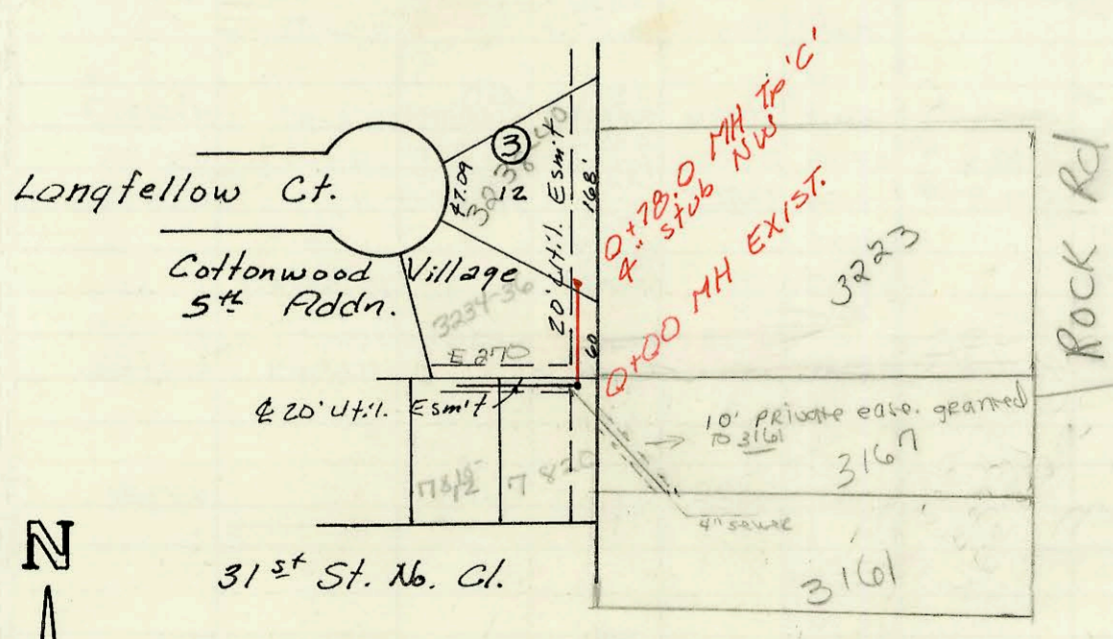


LAT 82, WAR INDUSTRIES SEWER
 468-76-245-81529-000-000-001
 Built By Utility Contr.
 Booked 12-16-87 From AG-13A



LAT 83, WAR INDUSTRIES SEWER
 468-76-245-81530-000-000-001
 Built By Utility Contr.
 Booked 12-16-87 From AG-13A



Film 264
 Page 1346
 Refer to
 Sewer Book
 E-270 for Bookings

LAT 39, MAIN 7, S.S. # 23
 468-76-245-81702-000-000-001
 Built By Stannard Const.
 Booked 12-18-87 From AG-13



CONSTRUCTION RECORD							SERVICE RECORD					
STATION	ELEVATION		Depth	MANHOLE	4-INCH "Y" BRANCHES		No. of Permit		House Number		DATE OF PERMITS	
	Ground	Grade			North West	South East	North West	South East	North West	South East	North West	South East
LAT 8 LINE 1	2, WIS											
0+00	183.31	171.31	12.0	EXIST 0+00								
1+00	182.8	171.79	11.0		1+45.2 ^{TOP}		22396		1135 Rutland		1-12-89	
2+00	183.5	172.27	11.2		2+11.2 ^{TOP}		20142		1139 N Rutland		2-19-88	
3+00	184.2	172.99	11.2	0+00-2 2+18.2	3+27.2 ^{TOP}	2+58.2 ^{TOP}	20900	22806	1143 Rutland 1147 Rutland	1208 Foster 1204 Foster	5-18-88	3-28-89
4+00	184.8	173.70	11.1		3+98.2 ^{TOP}	4+22.2 ^{TOP}	20748		1151 Rutland	1212 Foster	5-27-88	10-27-89
5+00	185.5	174.41	11.1		4+65.7 ^{TOP}	4+31.7 ^{TOP}	20191	21786	1151 Rutland	1206 Foster	2-19-88	3-2-89
LINE 2	185.64	175.00	10.6	5+83.7	4" stub N	4" PVC 40	20145	91-0004167	1155 Rutland	1204 Foster	2-19-88	1-10-92
0+00	184.12	172.34	11.8	0+00								
1+00						0+98.4 ^{TAP}		20879	115 Rutland			6-15-88
LINE 3	181.81	172.90	8.9	1+00.4	4" stub S		2384		1107 N Rutland			8-22-89
0+00	185.30	175.07	10.2	0+00								
1+00	185.5	175.53	10.0		1+40.0 ^{TOP}	1+18.0 ^{TOP}	19559	22653	1211 Rutland	1175 Rutland	11-10-87	3-2-89
2+00	187.3	176.25	11.1	1+56.0	2+39.0 ^{TOP}	1+79.0 ^{TOP}	20405	20845	1215 Rutland	1171 Rutland	4-6-88	6-13-88
3+00	188.0	176.96	11.0		3+24.2 ^{TOP}		20597		1219 Rutland		4-29-88	
4+00	188.3	177.67	10.6		3+62.2 ^{TAP}	4+33.2 ^{TAP}		20546	1162 Rutland			4-26-88
LAT 8 LINE 1	188.58	177.97	10.6	4+42.2	4" stub N	4" stub S	20203		1223 Rutland	1154 Rutland	3-1-88	
0+00	176.71	165.31	11.4	0+00								
1+00	178.0	165.73	12.3		1+02.0 ^{TOP}		20878		1231 Beachy		6-15-88	
2+00	178.29	166.23	12.1	1+95.0	1+90.0 ^{TAP}		22650		1201 Beachy		3-2-89	
3+00					2+40.0 ^{TOP}	2+59.0 ^{TOP}	26742	26055	1203 Beachy	1027 N Rutland	8-12-90	8-31-90
4+00	176.92	166.50 out 166.60 in	10.4	3+00.0								
LINE 2	175.8	166.90	8.9	4+48.6	4+25.6 ^{TOP}	4" stub SE	22917	22722	1023 Rutland		4-14-89	5-14-92
0+00	177.95	166.36	11.6	0+00			23356		1017 Rutland		6-14-89	
1+00	178.8	167.88	10.9		1+11.7 ^{TAP}	1+25.7 ^{TOP}	22244	22207	1231 Foster	1208 Beachy	4-19-89	3-29-89
2+00	180.3	169.41	10.9		1+38.7 ^{TAP}	2+08.7 ^{TOP}	22129	22651	1207 Foster	1209 Beachy	11-28-88	3-2-89
3+00	180.7	170.44 in	11.5	2+50.7	2+27.5 ^{TOP}	3+13.5 ^{TOP}	21933	22812	1207 Foster	1208 Beachy	11-14-88	3-29-89
4+00	180.50	171.05	9.5	3+88.5	4" stub NW	4" stub SW	22806	22811	1203 Foster	1209 Beachy	12-3-91	3-29-89
LAT 39 MAIN 24, WIS #23												
0+00	204.74	197.84	6.9	EXIST 0+00								
1+00	204.67	198.28	6.4	0+78.0	4" stub NW	4" stub SW	929175-7	91-31471-7	3223 N Rock Rd		6-22-92	9-6-91
LAT 7, LINE 6	MAIN 24, WIS (cont from K-226)											
6+00	218.5	208.53	10.0		5+73.1 ^{TAP}		22519		2554 Fox Run Ct		7-11-89	
7+00	221.4	210.74	10.7		6+72.5 ^{TAP}		22364-7		2555 Fox Run Ct		3-12-92	
8+00	224.1	212.96	11.1		7+22.5 ^{TAP}		22787		2560 Fox Run Ct		8-22-89	
9+00	225.1	215.17	9.9		4" SDR 35 8+95.5 ^{TAP}		92-20932-7		2562 Fox Run Ct		8-11-92	
10+00	225.87	215.61 in	10.3	9+18.5	9+88.5 ^{TAP}		91-90087-7		2560 Fox Run Ct		8-15-91	
11+00	226.1	216.24	9.9		10+45.5 ^{TAP}		22501		2568 Fox Run Ct		1-30-89	
12+00	226.8	217.02	9.8		11+26.8 ^{TAP}		22328		2570 Fox Run Ct		1-3-89	
13+00	227.3	217.79	9.5		12+93.8 ^{TAP}		94-6748-7		2572 Fox Run Ct		4-26-94	
14+00	227.8	218.57	9.2		4" PVC 40 12+75.8 ^{TAP}		1973		2574 Fox Run Ct		1-31-92	
15+00	228.31	219.01	9.3	13+56.8	4" stub NW	4" stub SW	26674	91-1985-7	2576 Fox Run Ct	2578 Fox Run Ct	12-5-90	

92-9175-7 6-22-92 3161 N Rock Rd - McCullough - D.L. Tapped 5' W of MH 0700 - Backed to E-270